

# HEADTEACHER NEWSLETTERS

COMMUNICATION | CELEBRATION | ORGANISATION

Weekly updates and information  
about what's happening in our  
School Family.



Follow our Twitter Account to a daily thread of the  
awesomeness that goes on in our wonderful Academy!

@NewsomeAcademy



**Newsome  
Academy**  
Everyone Exceptional Everyday



## Half-Term 6

ACADEMIC YEAR 2022-2023

# EXTRA-CURRICULAR ACTIVITIES: SUMMER TERM 6 - 22/23 (3PM-4PM)

DAY	CLUB	Location	Staff Lead
<b>MONDAY</b>	<ul style="list-style-type: none"> <li>• Athletics Club – All year groups</li> <li>• Drum Club</li> <li>• Homework Club</li> </ul>	<ul style="list-style-type: none"> <li>• School field</li> <li>• MU2</li> <li>• IT5</li> </ul>	<ul style="list-style-type: none"> <li>• G Earnshaw</li> <li>• C Payne</li> <li>• R Halkyard</li> <li>• D Fitton</li> </ul>
<b>TUESDAY</b>	<ul style="list-style-type: none"> <li>• Wheelchair club</li> </ul>	<ul style="list-style-type: none"> <li>• Sports Hall</li> </ul>	<ul style="list-style-type: none"> <li>• L Stacey</li> <li>• S Cunningham</li> </ul>
<b>WEDNESDAY</b>	<ul style="list-style-type: none"> <li>• Cricket Club – All year groups</li> <li>• Rounders Club – All year groups</li> <li>•</li> <li>• British Sign Language Club</li> <li>•</li> <li>• Band Club</li> <li>• Go Lead course</li> <li>• Homework Club</li> </ul>	<ul style="list-style-type: none"> <li>• School field/sports hall</li> <li>• School field/sports hall</li> <li>•</li> <li>• RP2</li> <li>•</li> <li>• MU2</li> <li>• Sports hall / astro</li> <li>• IT5</li> </ul>	<ul style="list-style-type: none"> <li>• G Earnshaw</li> <li>• Sa Mitchell</li> <li>• C Bailey</li> <li>• D Crooks</li> <li>• O Tozser</li> <li>• R Halkyard</li> <li>• L Stacey</li> <li>• S Goodall</li> </ul>
<b>THURSDAY</b>	<ul style="list-style-type: none"> <li>• Drama Club – All year groups welcome</li> <li>• Algebra Level 3 Club – invite only (yr10)</li> <li>• GCSE Art Yr10</li> <li>• Cooking year 7/8</li> <li>• Board Game Club</li> <li>• (lunchtime – KS3 girls' football)</li> <li>• Papercraft and calm colouring</li> <li>•</li> <li>• Homework Club</li> <li>• Chess Club</li> <li>• Boys Basketball</li> </ul>	<ul style="list-style-type: none"> <li>• Lecture Theatre</li> <li>• MA6</li> <li>• DT5</li> <li>• DT6</li> <li>• EN5</li> <li>• Sports Hall</li> <li>• EN4</li> <li>•</li> <li>• IT5</li> <li>• Library</li> <li>• Sports hall</li> </ul>	<ul style="list-style-type: none"> <li>• D Turner</li> <li>• J Masih</li> <li>• N Pratchett</li> <li>• D Fitton</li> <li>• R Cooper</li> <li>• L Stacey</li> <li>• C Ridgway</li> <li>•</li> <li>• S Goodall</li> <li>• D Harris</li> <li>• O Tozser</li> </ul>
<b>FRIDAY</b>	<ul style="list-style-type: none"> <li>• Year 11 NCFE – PE -p6</li> <li>• Year 10 P6- invite only</li> <li>• Year10 PA P6 – invite only</li> </ul>	<ul style="list-style-type: none"> <li>• IT5</li> <li>• EN5</li> <li>• IT3</li> <li>•</li> </ul>	<ul style="list-style-type: none"> <li>• G Earnshaw</li> <li>• R Cooper</li> <li>• SA Mitchell</li> <li>•</li> </ul>



# Newsome Academy

Exceptional

## HEADTEACHER NEWSLETTER

**WEEK 1**  
**W/C 5th JUNE**



All Y10/Y11 students have log-ins for GCSE Pod and your child can access it on a PC or on the phone. Guide them to use every opportunity to use this great facility as it can support increasing GCSE score by a grade. Year 10 Mock exams will be starting immediately after Year 11 GCSEs have taken place.



# REMEMBER

- Remember that 96% is expected and to ensure your child is on-time.
- Remember that all children are expected in school at 08:30 ready for line-ups each morning

# EVERY SCHOOL DAY COUNTS

### THIS WEEK AT A GLANCE FORMAL GCSE EXAMS CONTINUE

MONDAY	TUESDAY	WEDNESDAY	THURSDAY	FRIDAY
	<ul style="list-style-type: none"> <li>Kirklees Young People's Survey 2023 – Yr 9</li> </ul>		<ul style="list-style-type: none"> <li>Talent Foundary/Barclays Life skills Year 10 Exploring personal strengths for employment 9.00-15.00( HDU</li> </ul>	<ul style="list-style-type: none"> <li>Jay Hanson</li> <li>Boxing intervention 2pm - GCo</li> </ul>

### IMPORTANT LINKS & KEY INFORMATION

[22/23 CALENDAR](#)  
[23/24 CALENDAR](#)  
[SCHOOL CLUBS](#)  
[LETTERS HOME](#)

## GCSE EXAMS

- See exams for next week...
- Also remember to keep referring to the exam and revision schedule [here](#).

	Monday 5th	Tuesday 6th	Wednesday 7th	Thursday 8th	Friday 9th
<b>Morning Exam (9am start)</b>	<b>English Language</b> Paper 1 1H 45M	<b>Spanish</b> Listening, Reading 1H 45M <b>Arabic</b> Writing 1H 25M	<b>Maths</b> Paper 2 1H 30M	<b>Further Maths</b> Paper 1 1H 45M	<b>Geography</b> Paper 2 1H 30M
<b>Afternoon Exam (1pm start)</b>	<b>French</b> Writing 1H 10/20M		<b>History</b> Paper 2 1H 45M		<b>Biology</b> Paper 2 1H 45/15M



### OUR PASTORAL TEAM

#### YEAR 7

Ms Fletcher  
Ms Crossland

#### YEAR 8

Ms Sykes

#### YEAR 9

Mr Naeem

#### YEAR 10

Ms Carter

#### YEAR 11

Mr Sinclair

### STUDENT SERVICES

Ms Hallworth  
Mr Shazad

# Information for Families...

## • Key Communication and Messages...

- **Welcome Back to our final half-term!** There's only 7 weeks until the summer holidays. This is still important learning time and attendance recording.
- **End of year exams** (all years) will begin immediately after the Year 11 GCSEs. These are important benchmarking activities where decisions will be made of groups.
- **From September, the traditional method of 'setting' will be replaced with a new structure.** Rather than 'X' and 'Y' bands/groups, they will be replaced with letters. Students won't always know what group they are in, as these will be different depending on curriculum areas. More information on this will follow.



**From September, we will be welcoming a special Satellite Campus with will be run by Southgate Special School.** This will be a separate entity to our Academy but will provide for 2 small classes from Southgate and will be housed in an annex of our main building. Whilst this I a separate entity, I and the Head at Southgate hope to use this joint venture to benefit both our students and further enrich the curriculum offer. This venture will also include further investments into our building.

## IMPORTANT PROGRESS MONITORING

- Please remember to keep using class charts to monitor your child's progress in school. It's really important to keep tracking this and using as a tool to structure evening conversations.
- Every child's 'pie chart' should be mostly green in colour. These are important as this forms information that is sent to Colleges along with attendance information.



# 7 weeks until Summer Holidays...



[Click here](#) to see your child's Knowledge Organiser and Homework for each half-term.



[Click here](#) to see all letters that are sent home to families.



Remember to ensure you follow us on Twitter.

[Click here](#) to see the email links for all Pastoral Team Members.



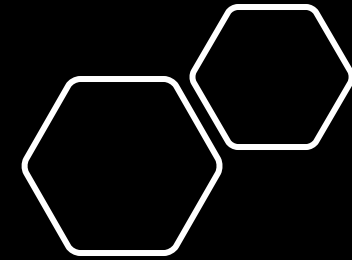
**Newsome  
Academy**



Educational Advice

# The Screen Time Diet: helping your teen find balance with their tech

[Click here  
for family  
information](#)



**Students will receive  
specific guidance on  
this in next week's  
Current Affairs  
Session.**



# Newsome Academy

Exceptional

## HEADTEACHER NEWSLETTER

### WEEK 2

### W/C 12th JUNE



All Y10/Y11 students have log-ins for GCSE Pod and your child can access it on a PC or on the phone. Guide them to use every opportunity to use this great facility as it can support increasing GCSE score by a grade. Year 10 Mock exams will be starting immediately after Year 11 GCSEs have taken place.



## REMEMBER

- Remember that 96% is expected and to ensure your child is on-time.
- Remember that all children are expected in school at 08:30 ready for line-ups each morning

# EVERY SCHOOL DAY COUNTS

### THIS WEEK AT A GLANCE FORMAL GCSE EXAMS CONTINUE

MONDAY	TUESDAY	WEDNESDAY	THURSDAY	FRIDAY
	<ul style="list-style-type: none"> <li>Castle Hill ReWorks link - Y8 - 1:30-3</li> <li>Kirklees Young People's Survey 2023 - Yr 9</li> </ul>	<ul style="list-style-type: none"> <li>*STEM trip - University of Leeds</li> <li>*(5 X Y9, 5 X Y10 pupils out all day with BOA and ECA)</li> <li>*Year 10 NCFE Business and Enterprise workshop 9-11 am HDU group only</li> </ul>	<ul style="list-style-type: none"> <li><a href="#">SPIN - Year 5 &amp; 6 Cricket @Almondbury Wes</a></li> </ul>	<ul style="list-style-type: none"> <li><a href="#">SPIN - Year 5 &amp; 6 Cricket @Almondbury Wes</a></li> <li>Jay Hanson</li> <li>BBoxing intervention 2pm - GCo</li> </ul>

### IMPORTANT LINKS & KEY INFORMATION

[22/23 CALENDAR](#)  
[23/24 CALENDAR](#)  
[SCHOOL CLUBS](#)  
[LETTERS HOME](#)

## GCSE EXAMS

- See exams for next week...
- Also remember to keep referring to the exam and revision schedule [here](#).

	Monday 12th	Tuesday 13th	Wednesday 14th	Thursday 15th	Friday 16th
Morning Exam (9am start)	<b>English Language</b> Paper 2 1H 45M	<b>Chemistry</b> Paper 2 1H 45/15M	<b>Maths</b> Paper 3 1H 30M	<b>History</b> Paper 3 1H 20M	<b>Physics</b> Paper 2 1H 45/15M
Afternoon Exam (1pm start)		<b>Spanish</b> Writing 1H 20M	<b>Polish</b> Listening, Reading 1H 45M <b>Persian</b> Listening, Reading 1H 50M		<b>Geography</b> Paper 3 1H 15M



### OUR PASTORAL TEAM

#### YEAR 7

Ms Fletcher  
Ms Crossland

#### YEAR 8

Ms Sykes

#### YEAR 9

Mr Naeem

#### YEAR 10

Ms Carter

#### YEAR 11

Mr Sinclair

### STUDENT SERVICES

Ms Hallworth  
Mr Shazad

# Information for Families...

## • Key Communication and Messages...

### End-of-Term Exams – ALL Year Groups!

#### Year 10 Mocks – Starting 26th June

- [Click here](#) to see a breakdown of all the revision guidance ready for Y10 exams.



#### Year 7 to Year 9 end-of-year Exams

- Your child should be using their Knowledge Organisers to revise for their end-of-year assessments which will be taking place in the Sports Hall after the GCSEs have finished. [Click here](#) to see all the learning from Knowledge Organisers.



1st July 2023

10am – 1pm

Come and join our Summer extravaganza of shops, games and much more!  
All proceeds are going to charity.



### Plans to Develop our own SEND Post 16 Provision

- Over the next couple of years, we are developing an exciting prospect of our very own Post 16 Provision for learners with an EHCP. This is yet another exciting opportunity!

#### IMPORTANT PROGRESS MONITORING

- Please remember to keep using classcharts to monitor your child's progress in school. It's really important to keep tracking this and using as a tool to structure evening conversations. Every child's 'pie chart' should be mostly green in colour. These are important as this forms information that is sent to Colleges along with attendance information.
- Also see the other platforms all Newsome Families should be using...

KNOWLEDGE ORGANISERS (KS3)



REGULAR CHECKING OF TWITTER



USING THE CLASSCHARTS APP



### 6 weeks until Summer Holidays...

- Please ensure punctual and high attendance until the end of term to ensure your child's opportunities aren't limited when it comes to College applications.



[Click here](#) to see your child's Knowledge Organiser and Homework for each half-term.



[Click here](#) to see all letters that are sent home to families.



Remember to ensure you follow us on Twitter.

[Click here](#) to see the email links for all Pastoral Team Members.



# Newsome Academy

## Additional Messages

### Warm Weather Arrangements

- The weather is forecast to be warm all week. Students are to come in usual uniform and amendments will be made in school. Please ensure your child had sunscreen for when they are outdoors.

### Access to the Site After School Hours

- Entrance to the entire site after school hours is not permitted as our facilities are let out. A number of legal proceedings are being taken for community members that enter and use without permission.

### Social Media Awareness/Reminders

- Please ensure you monitor your child's use of social media. There have been a growing number of cases where children have been putting themselves at risk when using these platforms outside school.

### Mobile Phone Reminders

- Student mobile phone usage is not permitted at Newsome and we operate a 'if it's seen/heard, it's confiscated' policy. In emergencies, students are seek permission AND be with an adult. See next page for specific guidance...





# Information for Families...

## • Key Communication and Messages...

### End-of-Term Exams – ALL Year Groups!

#### Year 10 Mocks – Starting 26th June

- [Click here](#) to see a breakdown of all the revision guidance ready for Y10 exams.



#### Year 7 to Year 9 end-of-year Exams

- Your child should be using their Knowledge Organisers to revise for their end-of-year assessments which will be taking place in the Sports Hall after the GCSEs have finished. [Click here](#) to see all the learning from Knowledge Organisers.



**1st July 2023**

**10am – 1pm**

Come and join our Summer extravaganza of shops, games and much more!  
**All proceeds are going to charity.**



### Plans to Develop our own SEND Post 16 Provision

- Over the next couple of years, we are developing an exciting prospect of our very own Post 16 Provision for learners with an EHCP. This is yet another exciting opportunity!

#### IMPORTANT PROGRESS MONITORING

- Please remember to keep using classcharts to monitor your child's progress in school. It's really important to keep tracking this and using as a tool to structure evening conversations. Every child's 'pie chart' should be mostly green in colour. These are important as this forms information that is sent to Colleges along with attendance information.
- Also see the other platforms all Newsome Families should be using...

KNOWLEDGE ORGANISERS (KS3)



REGULAR CHECKING OF TWITTER



USING THE CLASSCHARTS APP



### 6 weeks until Summer Holidays...

- Please ensure punctual and high attendance until the end of term to ensure your child's opportunities aren't limited when it comes to College applications.



[Click here](#) to see your child's Knowledge Organiser and Homework for each half-term.



[Click here](#) to see all letters that are sent home to families.



Remember to ensure you follow us on Twitter.

[Click here](#) to see the email links for all Pastoral Team Members.



# Newsome Academy

## Additional Messages

### Warm Weather Arrangements

- The weather is forecast to be warm all week. Students are to come in usual uniform and amendments will be made in school. Please ensure your child had sunscreen for when they are outdoors.

### Access to the Site After School Hours

- Entrance to the entire site after school hours is not permitted as our facilities are let out. A number of legal proceedings are being taken for community members that enter and use without permission.

### Social Media Awareness/Reminders

- Please ensure you monitor your child's use of social media. There have been a growing number of cases where children have been putting themselves at risk when using these platforms outside school.

### Mobile Phone Reminders

- Student mobile phone usage is not permitted at Newsome and we operate a 'if it's seen/heard, it's confiscated' policy. In emergencies, students are seek permission AND be with an adult. See next page for specific guidance...



# GUIDANCE OF MOBILE PHONES IN SCHOOL

The staff and Governors of Newsome Academy recognise that many students and their families own a mobile phone. We also recognise that some parents/guardians request that their child brings a mobile phone to school for safety and security reasons on the way to and from school.

Our core business of teaching and learning needs to be conducted in an environment free from unnecessary distractions or disruptions. Please pay particular note to the following:

- There has been a number of situations recently where students have been confused about the Academy expectations when they think they can freely communicate with their family through the day and this has resulted in sanctions. Please support us in supporting your child - our policy of no mobile phone usage stands.
- If your child has an issue they must seek the support of staff first – not directly contacting home and causing avoidable additional stress to yourselves and time to sort an issue out. It is vital that your child understands the channels in school and uses these.

We therefore have a number of guidelines around responsibility and usage in particular. It is the responsibility of students who bring mobile phones to school to abide by the guidelines outlined in this document.

**Parents/carers should be aware if their child takes a mobile phone to school it is assumed household insurance will provide the required cover in the event of loss or damage.** The school will not accept responsibility for any loss, damage or costs incurred due to its use.

- Parents/carers are reminded that in cases of emergency, the school office remains the main and appropriate point of contact and can ensure your child is reached quickly and assisted in any relevant way. If your child needs to contact you, they must use the student services/main office to do this. **We do not condone students using their mobile phone to contact parents requesting to be sent home.**

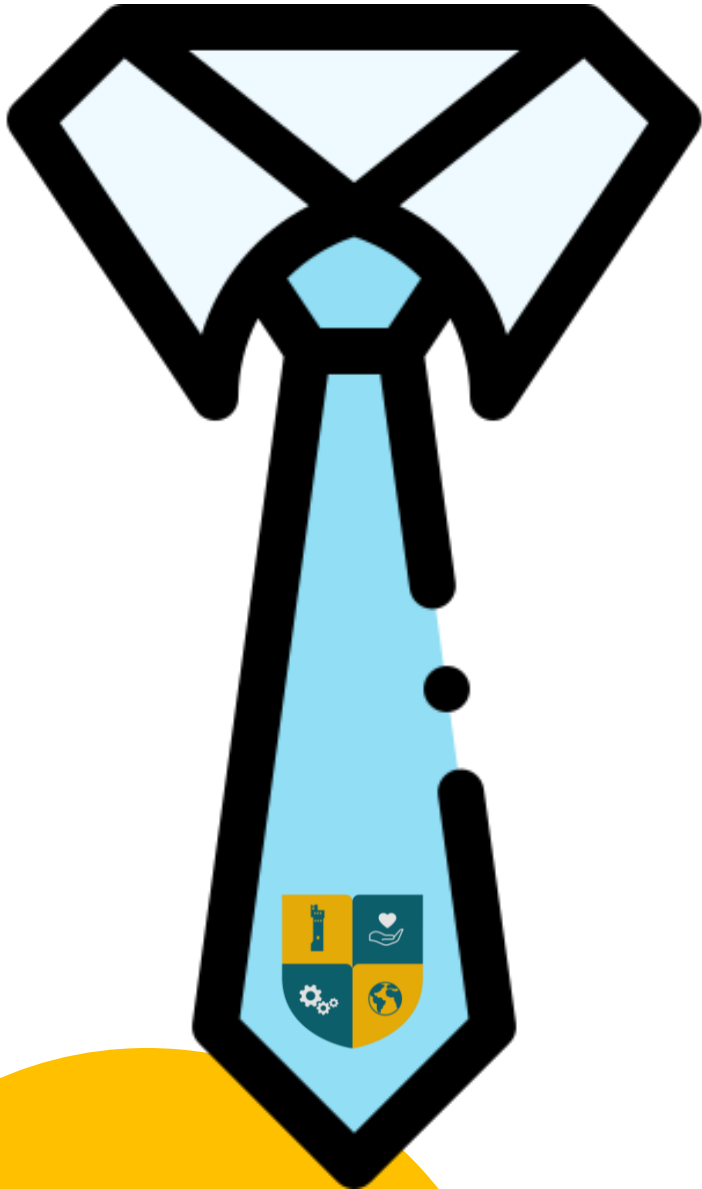
# KEY STUDENT REMINDERS



- Mobile phones should be switched off and out of sight in school.
- While on school premises, mobile phones are not to be seen or used by students, unless instructed by an adult.
- Unless express permission is granted, mobile phones should not be used to make calls, send SMS messages, surf the internet, take photos or use any other application during the school day or while on school premises.
- The Bluetooth function of a mobile phone must be switched off at all times and not be used to send images or files to other mobile phones.
- Using mobile phones to bully and threaten other students is unacceptable. Cyber bullying will not be tolerated.
- Mobile phones are not to be used or taken into changing rooms or toilets or used in any situation that may cause embarrassment or discomfort to their fellow students, staff or visitors to the school.
- It is unacceptable to take a picture of a member of staff without their permission. In the event that this happens the student will be asked and expected to delete those images.

Mobile phones will be confiscated if seen.

Students must adhere to the guidelines and protocol set out by the school when using their devices. If this is not adhered to a suitable sanction will be put in place. Mobile phones and other electronic devices are only to be used in school when instructed by a member of staff and to complete work/research tasks in an allocated period of time.



## Year 11 Ties Re-Call

- On Friday 16th June, students will be asked to return their gifted ties so these can be re-purposed for other year groups.
- We politely ask this as we kindly issue free uniform for our students and we are keen to reduce wastage and support other families.
- Please ensure your child brings their tie ready to hand in on this day.

## Year 11 Leavers Event

- Tuesday 20th June: 09:30 – 10:30. Students don't have to come in uniform.
- Students will have an ice-cream van for treats and shared some special moments before officially leaving Year 11.
- Please bring your blazers, jumpers & PE Kit so we can re-purpose.



# Newsome Academy

*Exceptional*

## HEADTEACHER NEWSLETTER

### WEEK 3

### W/C 19th JUNE



All Y10 students have log-ins for GCSE Pod and your child can access it on a PC or on the phone. Guide them to use every opportunity to use this great facility as it can support increasing GCSE score by a grade.

Year 10 Mock exams will be starting immediately after Year 11 GCSEs have taken place.



## REMEMBER

- Remember that 96% is expected and to ensure your child is on-time.
- Remember that all children are expected in school at 08:30 ready for line-ups each morning

# EVERY SCHOOL DAY COUNTS

### THIS WEEK AT A GLANCE GCSE EXAMS COMPLETION

MONDAY	TUESDAY	WEDNESDAY	THURSDAY	FRIDAY
<ul style="list-style-type: none"> <li>PI Work Experience Week – Y10</li> <li>DoE Assessed Expedition (Y9)</li> <li><a href="#">DoE Expedition 19.6.23 &amp; 20.6.23.docx</a></li> </ul>	<ul style="list-style-type: none"> <li>Y11 Leavers' Event 09:30-10:30</li> <li>Year 10 Drama Component 1 exam drop down all day</li> </ul>		<ul style="list-style-type: none"> <li>Year 11 Prom 7pm – 10.00pm</li> </ul>	<ul style="list-style-type: none"> <li>Jay Hanson</li> <li>Boxing intervention 2pm – GCo</li> </ul>

### IMPORTANT LINKS & KEY INFORMATION

[22/23 CALENDAR](#)  
[23/24 CALENDAR](#)  
[SCHOOL CLUBS](#)  
[LETTERS HOME](#)

## GCSE EXAMS

- All major exams are now complete!
- See exams for next week...
- Also remember to keep referring to the exam and revision schedule [here](#).

	Monday 19th	Tuesday 20th	Wednesday 21st	Thursday 22nd	Friday 23rd
Morning Exam (9am start)			<b>Portuguese</b> Writing 1H 20M <b>Polish</b> Writing 1H 15M		
Afternoon Exam (1pm start)			<b>Further Maths</b> Paper 2 1H 45M <b>Persian</b> Writing 1H 25M		



### OUR PASTORAL TEAM

#### YEAR 7

Ms Fletcher  
Ms Crossland

#### YEAR 8

Ms Sykes

#### YEAR 9

Mr Naeem

#### YEAR 10

Ms Carter

#### YEAR 11

Mr Sinclair

### STUDENT SERVICES

Ms Hallworth  
Mr Shazad

# We Did It!

Year 11 have successfully completed all major exams! We are so proud of them and their efforts and have really engaged with all the extra resource we have given them – more so than many schools.



# Newsome Academy

**Additional Messages**

## **Year 10 Mock Exams**

- Year 10 will start their Mock Exams and these are to be taken seriously. Please support them by ensuring GCSE Pod is downloaded and that they are aware of the schedule [here](#). I've also included next week below.

w/c 19/06	Monday	Tuesday	Wednesday	Thursday	Friday
Period 1&2				English Language 1H	Business and Enterprise 1H30
Period 3&4				Geography 1H30	MFL Writing 1H

## **End of Year Exams for Years 7-9**

- Following Y10 Mocks, all other year groups will have their exams in the Main Sports Hall. Please refer to the curriculum information from the Knowledge Organisers [here](#).

## **Important Reminders for Knowledge Organisers**

- Every student in Y7/Y8/Y9 have been given one of these during each half-term. These are VITAL for your child's success and learning. The end of year exams will focus around these. Students are to use, refer and have these out in each lesson also to refer to key vocabulary.





# Newsome Academy

Exceptional

## HEADTEACHER NEWSLETTER

WEEK 4

W/C 26th JUNE



All Y10 students have log-ins for GCSE Pod and your child can access it on a PC or on the phone. Guide them to use every opportunity to use this great facility as it can support increasing GCSE score by a grade.

Year 10 Mock exams will be starting immediately after Year 11 GCSEs have taken place.



## REMEMBER

- Remember that 96% is expected and to ensure your child is on-time.
- Remember that all children are expected in school at 08:30 ready for line-ups each morning

# EVERY SCHOOL DAY COUNTS

### THIS WEEK AT A GLANCE

MONDAY	TUESDAY	WEDNESDAY	THURSDAY	FRIDAY
	<ul style="list-style-type: none"> <li>Castle Hill ReWorks link - Y8 – 1:30-3</li> </ul>	<ul style="list-style-type: none"> <li>Hillside / Hillview Extra Transition session</li> <li>R Leroy and S Baines at Tender Awards – London with 2 students</li> </ul>	<ul style="list-style-type: none"> <li>Y9/Y10 Post 16 Careers Event</li> <li>Newsome Junior / Lowerhouses Extra transition session</li> </ul>	<ul style="list-style-type: none"> <li>FA Secondary School CPD 9-3pm</li> </ul>

**IMPORTANT LINKS & KEY INFORMATION**

-----

[22/23 CALENDAR](#)  
[23/24 CALENDAR](#)  
[SCHOOL CLUBS](#)  
[LETTERS HOME](#)

## YEAR 10 MOCK EXAMS

- All major exams are now complete!
- See exams for next week...
- Also remember to keep referring to the exam and revision schedule [here](#).

w/c 26/06	Monday	Tuesday	Wednesday	Thursday	Friday
Period 1&2	Maths Paper 1 1H30	RE Paper 2 1H45	Science Chemistry 1H15/45	Maths Paper 2 1H30	Health and Fitness 1H30 Food and Cookery 1H30
Period 3&4	History Paper 3 1H20	Science Biology 1H15/45	MFL Reading 45M	English Literature 45M	MFL Listening 40M



### OUR PASTORAL TEAM

#### YEAR 7

Ms Fletcher  
Ms Crossland

#### YEAR 8

Ms Sykes

#### YEAR 9

Mr Naeem

#### YEAR 10

Ms Carter

#### YEAR 11

Mr Sinclair

### STUDENT SERVICES

Ms Hallworth  
Mr Shazad



# Newsome Academy

**Additional Messages**



## **Year 10 Mock Exams**

**Year 10 have started their Mock Exams** and these are to be taken seriously. Please support them by ensuring GCSE Pod is downloaded and that they are aware of the schedule [here](#). I've also included next week below.



## **End of Year Exams for Years 7-9**

Following Y10 Mocks, all other year groups will have their exams in the Main Sports Hall. Please refer to the curriculum information from the Knowledge Organisers [here](#).



## **Important Reminders for Knowledge Organisers**

Every student in Y7/Y8/Y9 have been given one of these during each half-term. These are VITAL for your child's success and learning. The end of year exams will focus around these. Students are to use, refer and have these out in each lesson also to refer to key vocabulary.



## **Important Reminders for Knowledge Organisers**

Every student in Y7/Y8/Y9 have been given one of these during each half-term. These are VITAL for your child's success and learning. The end of year exams will focus around these. Students are to use, refer and have these out in each lesson also to refer to key vocabulary.



## **Last Day of Term**

Remember we break up on Friday 21st July for the summer holidays. Attendance is vital every school day!







**Newsome  
Academy**



**Every year, Newsome Academy holds a Prom for Year 11 after they finish their GCSEs. Students & staff look forwards to celebrating their success and gives an opportunity to say goodbye & celebrate together as a FAMILY.**

**Check out our Twitter Page for more!**









## GEL BALL GUNS

A latest craze that is attracting children are these gel guns. It is vital that children and families understand that in our Policy this is regarded as an 'offensive weapon' (see Policy extract below) and the most severe sanctions are attached to this. ANY bringing, selling, involvement or handling will be dealt with in a serious and decisive manner. Please discuss this in your family so this doesn't affect your child in any way at Newsome.

# IMPORTANT SAFETY INFORMATION

2.34 Under section 19 of the 1968 Act, it is an offence for a person to carry an imitation firearm in a public place without lawful authority or reasonable excuse (see also Chapter 21). The maximum custodial sentence is 12 months for this offence (as it relates to imitation firearms).

1. Carrying an offensive weapon
2. Substance misuse on Academy premises
3. Possession of drugs on Academy premises
4. Persistent defiance of Academy expectations
5. Serious assault to staff or students
6. Repeated internal/external exclusions
7. Arson
8. Setting off fire alarm





# Newsome Academy

Exceptional

## HEADTEACHER NEWSLETTER

**WEEK 5**  
**W/C 3RD JULY**



All Y10 students have log-ins for GCSE Pod and your child can access it on a PC or on the phone. Guide them to use every opportunity to use this great facility as it can support increasing GCSE score by a grade.

Year 10 Mock exams will be starting immediately after Year 11 GCSEs have taken place.



# REMEMBER

- Remember that 96% is expected and to ensure your child is on-time.
- Remember that all children are expected in school at 08:30 ready for line-ups each morning



**1st July 2023: 10am – 1pm**

Come and join our Summer extravaganza of shops, games and much more!  
All proceeds are going to charity.

### THIS WEEK AT A GLANCE

MONDAY	TUESDAY	WEDNESDAY	THURSDAY	FRIDAY
<ul style="list-style-type: none"> <li>RISE Bikability</li> </ul>	<ul style="list-style-type: none"> <li>Y6 Transition Day 1</li> </ul>	<ul style="list-style-type: none"> <li>Strike Day – see letter sent last week <a href="#">here</a>.</li> <li>Y6 Transition Day 2</li> <li>Y6 Transition Evening</li> </ul>		<ul style="list-style-type: none"> <li>Strike Day – see letter sent last week <a href="#">here</a>.</li> <li>Non-Uniform Day for students in school to celebrate Culture.</li> </ul>

### IMPORTANT LINKS & KEY INFORMATION

[22/23 CALENDAR](#)  
[23/24 CALENDAR](#)  
[SCHOOL CLUBS](#)  
[LETTERS HOME](#)

## YEAR 10 MOCK EXAMS

- All major exams are now complete!
- See exams for next week...
- Also remember to keep referring to the exam and revision schedule [here](#).

w/c 03/07	Monday	Tuesday	Wednesday	Thursday	Friday
Period 1&2	Science Physics 1H15/45	Maths Paper 3 1H30	Art Full day Option block C	Drama Periods 1 - 4	Art Full day Option block D
Period 3&4	English 45M				



### OUR PASTORAL TEAM

#### YEAR 7

Ms Fletcher  
Ms Crossland

#### YEAR 8

Ms Sykes

#### YEAR 9

Mr Naeem

#### YEAR 10

Ms Carter

#### YEAR 11

Mr Sinclair

### STUDENT SERVICES

Ms Hallworth  
Mr Shazad



# Newsome Academy

Additional Messages



## Year 10 Mock Exams

Year 10 have started their Mock Exams and these are to be taken seriously. Please support them by ensuring GCSE Pod is downloaded and that they are aware of the schedule [here](#). I've also included next week below.



## End of Year Exams for Years 7-9

Following Y10 Mocks, all other year groups will have their exams in the Main Sports Hall. Please refer to the curriculum information from the Knowledge Organisers [here](#).



## Important Reminders for Knowledge Organisers

Every student in Y7/Y8/Y9 have been given one of these during each half-term. These are VITAL for your child's success and learning. The end of year exams will focus around these. Students are to use, refer and have these out in each lesson also to refer to key vocabulary.



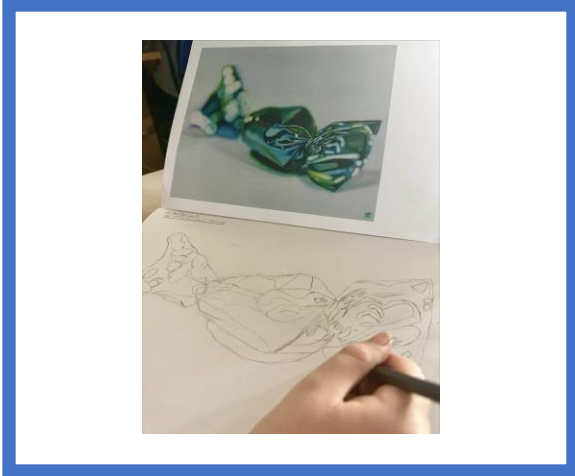
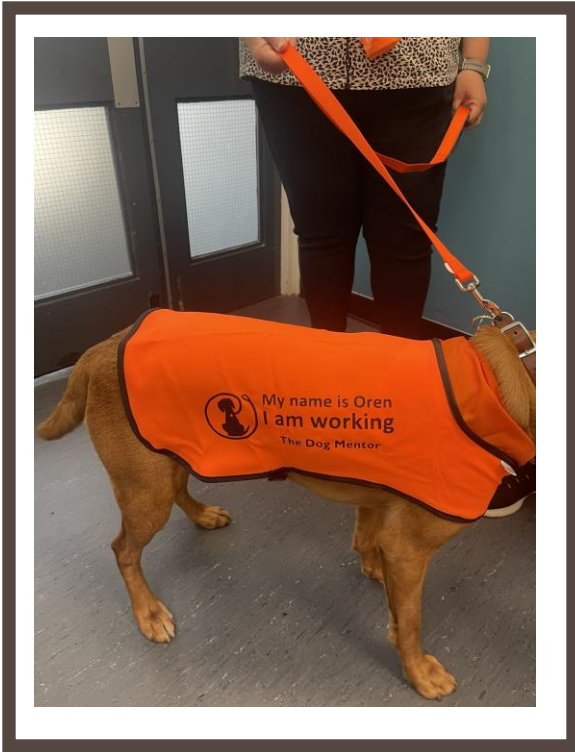
## Strike Days – 5th & 7th July

Please see the letter sent last week regarding our operating on these days by [clicking here](#).

Arrangements for Wednesday 5 <sup>th</sup> July ONLY	
<ul style="list-style-type: none"><li>The Academy will be open as usual to Year 7 students.</li><li>The Academy will be closed to Year 8 students.</li><li>The Academy will be closed to Year 9 students.</li><li>The Academy will be closed to Year 10 students.</li><li>The Academy will be open for those in our HI/PI Provision.</li></ul>	<p>Students in 10C/Ar1 should attend the full day for their Art mock exam</p>
Arrangements for Friday 7 <sup>th</sup> July ONLY	
<ul style="list-style-type: none"><li>The Academy will be open as usual to Year 7 students.</li><li>The Academy will be closed to Year 8 students.</li><li>The Academy will be closed to Year 9 students.</li><li>The Academy will be closed to Year 10 students.</li><li>The Academy will be open for those in our HI/PI Provision.</li></ul>	<p>Students in 10D/Ar1 should attend the full day for their Art mock exam</p>



The Academy is only open for Year 7, HI, PI and selected students doing their Mocks.







# Newsome Academy

Exceptional

## HEADTEACHER NEWSLETTER

### WEEK 6

### W/C 10TH JULY



All Y10 students have log-ins for GCSE Pod and your child can access it on a PC or on the phone. Guide them to use every opportunity to use this great facility as it can support increasing GCSE score by a grade.

Year 10 Mock exams will be starting immediately after Year 11 GCSEs have taken place.



## REMEMBER

- Remember that 96% is expected and to ensure your child is on-time.
- Remember that all children are expected in school at 08:30 ready for line-ups each morning



### THIS WEEK AT A GLANCE

MONDAY	TUESDAY	WEDNESDAY	THURSDAY	FRIDAY
	<ul style="list-style-type: none"> <li>France Trip for Year 9 and Year 10</li> </ul>	<ul style="list-style-type: none"> <li>France Trip for Year 9 and Year 10</li> </ul>	<ul style="list-style-type: none"> <li>France Trip for Year 9 and Year 10</li> </ul>	

**IMPORTANT LINKS & KEY INFORMATION**

-----

[22/23 CALENDAR](#)  
[23/24 CALENDAR](#)  
[SCHOOL CLUBS](#)  
[LETTERS\\_HOME](#)

## END OF YEAR EXAMS

- All major exams are now complete!
- See exams for next week...
- Also remember to keep referring to the exam and revision schedule [here](#).



### OUR PASTORAL TEAM

#### YEAR 7

Ms Fletcher  
Ms Crossland

#### YEAR 8

Ms Sykes

#### YEAR 9

Mr Naeem

#### YEAR 10

Ms Carter

#### YEAR 11

Mr Sinclair

### STUDENT SERVICES

Ms Hallworth  
Mr Shazad



# Newsome Academy

Additional Messages



## Year 6 Transition Success!

**Year 10 have started their Mock Exams** and these are to be taken seriously. Please support them by ensuring GCSE Pod is downloaded and that they are aware of the schedule [here](#). I've also included next week below.



## End of Year Exams for Years 7-9

Following Y10 Mocks, all other year groups will have their exams in the Main Sports Hall. Please refer to the curriculum information from the Knowledge Organisers [here](#).



## Important Reminders for Knowledge Organisers

Every student in Y7/Y8/Y9 have been given one of these during each half-term. These are VITAL for your child's success and learning. The end of year exams will focus around these. Students are to use, refer and have these out in each lesson also to refer to key vocabulary.



## Year 9/10 France Trip 2023!

**Our annual trip will be leaving this week to Normandy.** Students will be sampling cultural highlights of France. Highlights will include a visit to UNESCO Heritage Site, Mont Saint Michel, WW2 landing speeches and much more.



follow us on  
twitter

**Tender**  
acting to  
end abuse



**OUTSTANDING SECONDARY SCHOOL 2023**



The logo for Newsome Academy's Stonewall Diversity Champion award. It features four icons in a row: a castle tower, a hand holding a heart, a gear, and a globe. Below the icons is the text "Newsome Academy". Underneath that is a star icon and a banner containing the text "Stonewall DIVERSITY CHAMPION".

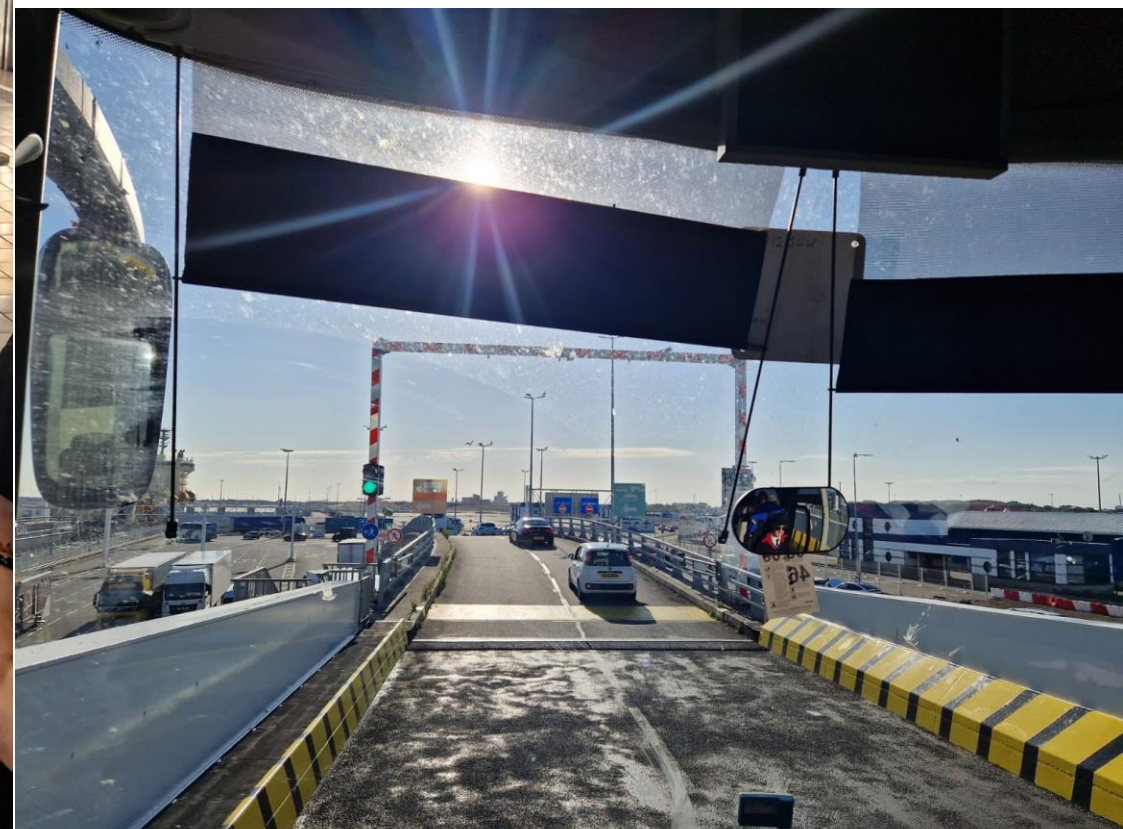




Newsome Academy

## France Trip

A tired group arrived at Dover at 6am ready for the Ferry. Next Stop Callais!





# Newsome Academy

Exceptional

## HEADTEACHER NEWSLETTER

WEEK 7  
W/C 17TH JULY



Thanks to everyone for another successful year and playing their part and supporting our proud Academy Family.



## REMEMBER

- Remember that 96% is expected and to ensure your child is on-time.
- Remember that all children are expected in school at 08:30 ready for line-ups each morning



### THIS WEEK AT A GLANCE – FUN, INFORMATION & END OF TERM!

MONDAY	TUESDAY	WEDNESDAY	THURSDAY	FRIDAY
	<ul style="list-style-type: none"><li>Sports Day – if rained off will be Wednesday.</li></ul>			<ul style="list-style-type: none"><li>Break up for summer – students finish at 12:30</li></ul>

**IMPORTANT LINKS & KEY INFORMATION**

[22/23 CALENDAR](#)  
[23/24 CALENDAR](#)  
[SCHOOL CLUBS](#)  
[LETTERS\\_HOME](#)

## END OF YEAR EXAMS SUCCESS

- All major exams are now complete!
- See exams for next week...
- Also remember to keep referring to the exam and revision schedule [here](#).



### OUR PASTORAL TEAM

#### YEAR 7

Ms Fletcher  
Ms Crossland

#### YEAR 8

Ms Sykes

#### YEAR 9

Mr Naeem

#### YEAR 10

Ms Carter

#### YEAR 11

Mr Sinclair

### STUDENT SERVICES

Ms Hallworth  
Mr Shazad





# Newsome Academy

**Additional Messages**



## **End of Year Exams**

A huge well done to all year groups for their formal end-of-year exams. They went extremely well and will inform the planning moving into next year.



## **Groupings for Next Year**

As already communicated, students will be in different groups with different coding when they return. With this in mind, it's important to remember that the codes N/E/W/S/O/M/E will be used and will not be in any order (as in sets).



## **Summer Learning**

Students are encouraged to continue their learning over the summer period by using their Knowledge Organisers for each Half-Term that have been supplied to them throughout the year. The e-links to each of these can be located by [clicking here](#).



Students in **Y9 moving into Y10** and **Y10 moving to Y11** are to research the exam boards and other information on the next page.



# Newsome Academy

Additional Messages



## Summer Learning for students moving into/already in KS4

- Spend your time ensuring you are aware and understand what exam board you are following. Complete past exam papers that are available online.
- Download GCSE Pod and watch the great material on there.
- Ensure you are familiar and have downloaded the various software packages available to aid your study.

### Support Software for Newsome Learners

Each subject area uses additional software to support learning - this provides learning outside the classroom...

Subject-Specific Software Packages to Support Study		
<p><b>English</b></p> <ul style="list-style-type: none"> <li><a href="#">Century Tech</a></li> <li><a href="#">Mr Bruff's Video Guides (KS4)</a></li> </ul>	<p><b>Maths</b></p> <ul style="list-style-type: none"> <li><a href="#">MathsWatch</a></li> <li><a href="#">Century Tech</a></li> <li><a href="#">Corbett Maths</a></li> </ul>	<p><b>Science</b></p> <ul style="list-style-type: none"> <li><a href="#">Educake</a> (main)</li> <li><a href="#">Century Tech</a></li> </ul>
<p><b>Geography</b></p> <ul style="list-style-type: none"> <li><a href="#">GCSEPod</a></li> </ul>	<p><b>History</b></p> <ul style="list-style-type: none"> <li><a href="#">GCSEPod</a></li> </ul>	<p><b>RE</b></p> <ul style="list-style-type: none"> <li><a href="#">Seneca Learning</a></li> <li><a href="#">GCSE Bitesize</a></li> <li><a href="#">GCSEPod</a></li> </ul>
<p><b>Languages</b></p> <ul style="list-style-type: none"> <li><a href="#">Active Learn</a></li> <li><a href="#">Languagenut</a></li> </ul>	<p><b>Music</b></p> <ul style="list-style-type: none"> <li><a href="#">Music - BBC Bitesize</a></li> <li><a href="#">BandLab: Make Music Online</a></li> </ul>	<p><b>Creative (CAPE)</b></p> <ul style="list-style-type: none"> <li><a href="#">BFI</a></li> <li><a href="#">iAchieve</a></li> </ul>
<p><b>Generic</b></p> <ul style="list-style-type: none"> <li><a href="#">Oak National Academy</a></li> <li><a href="#">GCSEPod</a></li> <li><a href="#">BBC Bitesize</a></li> </ul>		

**GCSE Exam Boards**

It's vital that students know their exam board so they can access past papers and understand their courses.

- English: AQA
- Maths: (Higher – AQA) & (Foundation – OCR)
- Science: AQA
- Geography: AQA
- History: Edexcel
- RE: AQA
- French: Edexcel
- German: Edexcel
- Art & Design: AQA
- Digital IT: Pearson
- Music: Pearson
- Hospitality - Pearson
- Performing Arts: Pearson
- Health & Fitness: NCFE
- Business: NCFE





# SPORTS DAY!



Tuesday 18th July 2023

# Sports Day

## Tuesday 18th July 2023

---

Morning lessons (P1-3) KS3 students will attend their normal timetabled lessons to complete Olympics Sports Day based activities. ***Year 10 students will complete lessons as normal.***

- ***Period 1: Sport's Day themed Kahoot Quiz competition***
- ***Period 2: Create your own Sports Day flag***
- ***Period 3: Create a team banner*** The PE department have created lessons for the morning. Please take the time to read over them as you may need some additional materials for the lessons.



# Newsome Academy

End of Term Arrangements



## Key Information

- We break up on Friday 21st July 2023 at 12:30
- Our new Y7 students start on Wednesday 6th September & have the Academy to themselves for the day.
- All other students return on Thursday 7th September at normal school times.
- See next year's term calendar [here](#).

## Friday 21st July 2023

### \*Non-Uniform Day

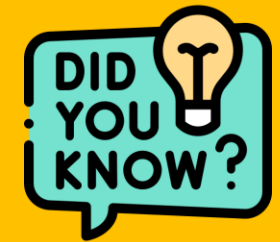
Period 1	<ul style="list-style-type: none"><li>• Normal lessons.</li></ul>
Period 2	<ul style="list-style-type: none"><li>• Normal lessons.</li></ul>
Break	<ul style="list-style-type: none"><li>• Enhanced food covering lunch/break.</li></ul>
Period 3	<ul style="list-style-type: none"><li>• Students go to Teams &amp; brought down to the Sports hall at 11:45 (prompted by HOYs).</li><li>• Celebration event &amp; key information.</li></ul>



Newsome Academy

# Year 6 Transition

We welcomed  
our biggest  
cohort of new  
students.



Newsome offers Y6  
students 1 more day  
that other secondary  
schools.

**Our  
Family  
Accolades**



# **Newsome Academy**



Our student hits the headlines again - [click here](#) for the press release.



The Newsome Academy logo is a shield divided into four quadrants: top-left (blue with a white key), top-right (yellow with a white heart), bottom-left (yellow with a white gear), and bottom-right (blue with a white globe). Below it is the text "Newsome Academy" in blue. The Eton College logo is a shield divided into four quadrants: top-left (blue with a white fleur-de-lis), top-right (red with a white lion), bottom-left (black with a white fleur-de-lis), and bottom-right (black with a white fleur-de-lis). To the right of the shield is the text "ETON COLLEGE" in black, with "ETON" on the top line and "COLLEGE" on the bottom line.

**Tender**  
acting to  
end abuse



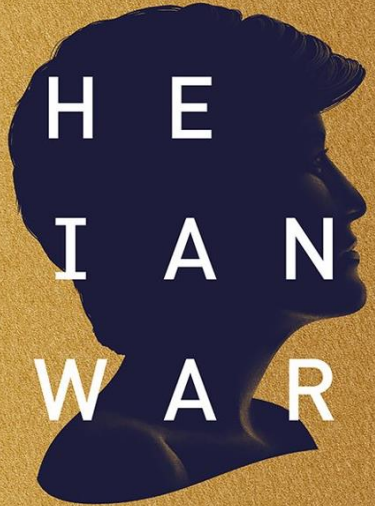
**OUTSTANDING SECONDARY SCHOOL 2023**



**Newsome  
Academy**

**Recognising the  
potential of voice in  
young people.**

T H E  
D I A N A  
A W A R D



**Newsome  
Academy**

**YOUNG PEOPLE HAVE THE  
POWER TO CHANGE THE  
WORLD**

We're proud to be a member of the only charity set up in memory of Diana, Princess of Wales and her belief that young people have the power to change the world. Our mission is to empower young people to lead that change through a range of initiatives which unlock their potential, inspire action and create opportunities, ensuring that no young person is left out or left behind.

Newsome Academy Dianna Ambassadors lead in ensuring our culture cares for, celebrates, protects and support difference in ALL ASPECTS. The culture created as a result of this can be seen clearly around the Academy.



Newsome Academy

**Stonewall  
DIVERSITY  
CHAMPION**



**Newsome are proud to  
pioneer LGBTQ+ awareness  
and rights and have a  
student base which ensures  
ALL communities are FAMILY.**

A map of France and its surrounding regions. France is highlighted in orange and labeled 'France' in large black text. A star marks Paris. Other cities marked with dots are Lyon and Marseille. Neighboring countries are labeled: Belgium, Luxem., Switz., Italy, and Corsica. Bodies of water include the English Channel, North Atlantic Ocean, and Mediterranean. A solid orange bar is at the bottom.

# France

France Trip 2023





# France Trip 2023

See our Twitter for full updates and pictures!





# London Trip 2023



# Proud to be



**A special thank you to all our families for supporting us in supporting your child this year.**

*Like all families, we naturally go through our ups/downs but ultimately, we stand together and care together.*

Proud

to  be



**we are all  
lucky to be  
part of our  
family!**