

Headteacher

BREAKFAST BRIEFING

KEY MESSAGES | CURRENT AFFAIRS | CONTEXTUALISED READING

HALF-TERM 2 **WEEK 5 (A)**
W/C 4TH **DECEMBER 2023**

Useful Links

Remember to also go through your Head of Year if you need anything...

Term Calendar

An overview of the school year (subject to some changes (assessment periods))



Our Twitter (X) is our key info sharing platform. All families should be using this.

Letters Home

All the letters sent to our families. Please also add us on Twitter (X).

Our Trust Our Family



Our family of academies work collaboratively to create a trust Where Hearts & Minds Connect with value-driven partners to ensure education impacts positively on students, staff and communities we serve.

WEEKLY INFORMATION FOR STUDENTS & FAMILIES

EXTRA-CURRICULAR ACTIVITIES: AUTUMN TERM 23/24 (3PM-4PM)



Day	CLUB	Location	Staff Lead
MONDAY	<ul style="list-style-type: none"> ● Netball Y7 – Y10 ● Fitness Y7/8 ● Homework Club – All years ● Music Club ● TLC time ● KS3 Girls scooters (12.30-1.00) ● Cooking Club 	<ul style="list-style-type: none"> ● Sports Hall/Top Astro ● Fitness Suite ● 606 ● 401 ● TLC ● Sports Hall ● 602 	CPA/MHO GEA/JDA MYA RHA SEND LST DF
TUESDAY	<ul style="list-style-type: none"> ● Wheelchair Basketball Club (by invitation only) 	<ul style="list-style-type: none"> ● Sports Hall 	LST / SCU
WEDNESDAY	<ul style="list-style-type: none"> ● Homework Club ● Drama Club ● TLC time ● EAL / culture club ● Programming Club ● Dance Club ● Girls Football ● British Sign Language ● Basketball 	<ul style="list-style-type: none"> ● 606 ● Lecture Theatre ● TLC ● EAL / 408 ● 608 ● Dance Studio ● Field ● PI Base ● Sports Hall 	DF DT SEND SMU / TA AAH SMT External DC JDA
THURSDAY	<ul style="list-style-type: none"> ● GCSE Art catch up Yr10 ● Drama GCSE ● Craft club ● Choir Club ● Homework Club ● Fitness Y9/10 ● Chess Club ● Algebra Level 3 Club (invitation only) 	<ul style="list-style-type: none"> ● 601 ● Lecture Theatre ● 202 ● 401 ● 606 ● Fitness Suite ● Library ● 407 	NPR DT CRI ECO MYA DHO/JDA/GEA DHA MAS
FRIDAY	<ul style="list-style-type: none"> ● Art & DT Catch up KS3 & KS4 	<ul style="list-style-type: none"> ● 609 	DB (Diane Barker)

School calendar 2023/24



Newsome Academy



2023				2024							
August	September	October	November	December	January	February	March	April	May	June	July
1 Tu	1 Fr	1 Su	2 Su	1 Fr	1 Mo <small>New Year's Day</small>	1 Th	1 Fr	1 Mo <small>Easter Monday</small>	1 We	1 Sa	1 Mo
2 We	2 Sa	2 Mo	3 Tu	2 Sa	2 Tu	2 Fr	2 Sa	2 Tu	2 Th	2 Su	2 Tu
3 Th	3 Su	3 Tu	3 Fr	3 Su	3 We	3 Sa	3 Su	3 We	3 Fr	3 Mo	3 We
4 Fr	4 Mo	4 We	4 Sa	4 Mo	4 Th	4 Su	4 Mo	4 Th	4 Sa	4 Tu	4 Th
5 Sa	5 Tu	5 Th	5 Su	5 Tu	5 Fr	5 Mo	5 Tu	5 Fr	5 Su	5 We	5 Fr
6 Su	6 We	6 Fr	6 Mo	6 We	6 Sa	6 Tu	6 We	6 Sa	6 Mo <small>Early May Bk. Hol.</small>	6 Th	6 Sa
7 Mo	7 Th	7 Sa	7 Tu	7 Th	7 Su	7 We	7 Th	7 Su	7 Tu	7 Fr	7 Su
8 Tu	8 Fr	8 Su	8 We	8 Fr	8 Mo	8 Th	8 Fr	8 Mo	8 We	8 Sa	8 Mo
9 We	9 Sa	9 Mo	9 Th	9 Sa	9 Tu	9 Fr	9 Sa	9 Tu	9 Th	9 Su	9 Tu
10 Th	10 Su	10 Tu	10 Fr	10 Su	10 We	10 Sa	10 Su	10 We	10 Fr	10 Mo	10 We
11 Fr	11 Mo	11 We	11 Sa	11 Mo	11 Th	11 Su	11 Mo	11 Th	11 Sa	11 Tu	11 Th
12 Sa	12 Tu	12 Th	12 Su	12 Tu	12 Fr	12 Mo	12 Tu	12 Fr	12 Su	12 We	12 Fr
13 Su	13 We	13 Fr	13 Mo	13 We	13 Sa	13 Tu	13 We	13 Sa	13 Mo <small>GCSEs</small>	13 Th	13 Sa
14 Mo	14 Th	14 Sa	14 Tu	14 Th	14 Su	14 We	14 Th	14 Su	14 Tu	14 Fr	14 Su
15 Tu	15 Fr	15 Su	15 We	15 Fr	15 Mo	15 Th	15 Fr	15 Mo	15 We	15 Sa	15 Mo
16 We	16 Sa	16 Mo	16 Th	16 Sa	16 Tu	16 Fr	16 Sa	16 Tu	16 Th	16 Su	16 Tu
17 Th	17 Su	17 Tu	17 Fr	17 Su	17 We	17 Sa	17 Su	17 We	17 Fr	17 Mo	17 We
18 Fr	18 Mo	18 We	18 Sa	18 Mo	18 Th	18 Su	18 Mo	18 Th	18 Sa	18 Tu	18 Th
19 Sa	19 Tu	19 Th	19 Su	19 Tu	19 Fr	19 Mo	19 Tu	19 Fr	19 Su	19 We	19 Fr
20 Su	20 We	20 Fr	20 Mo	20 We	20 Sa	20 Tu	20 We	20 Sa	20 Mo	20 Th	20 Sa
21 Mo	21 Th	21 Sa	21 Tu	21 Th	21 Su	21 We	21 Th	21 Su	21 Tu	21 Fr	21 Su
22 Tu	22 Fr	22 Su	22 We	22 Fr	22 Mo	22 Th	22 Fr	22 Mo	22 We	22 Sa	22 Mo
23 We	23 Sa	23 Mo	23 Th	23 Sa	23 Tu	23 Fr	23 Sa	23 Tu	23 Th	23 Su	23 Tu
24 Th	24 Su	24 Tu	24 Fr	24 Su	24 We	24 Sa	24 Su	24 We	24 Fr	24 Mo	24 We
25 Fr	25 Mo	25 We	25 Sa	25 Mo <small>Christmas Day</small>	25 Th	25 Su	25 Mo	25 Th	25 Sa	25 Tu	25 Th
26 Sa	26 Tu	26 Th	26 Su	26 Tu <small>Boxing Day</small>	26 Fr	26 Mo	26 Tu	26 Fr	26 Su	26 We	26 Fr
27 Su	27 We	27 Fr	27 Mo	27 We	27 Sa	27 Tu	27 We	27 Sa	27 Mo <small>Spring Bk. Hol.</small>	27 Th	27 Sa
28 Mo <small>August Bk. Hol.</small>	28 Th	28 Sa	28 Tu	28 Th	28 Su	28 We	28 Th	28 Su	28 Tu	28 Fr	28 Su
29 Tu	29 Fr	29 Su	29 We	29 Fr	29 Mo	29 Th	29 Fr	29 Mo	29 We	29 Sa	29 Mo
30 We	30 Sa	30 Mo	30 Th	30 Sa	30 Tu		30 Sa	30 Tu	30 Th	30 Su	30 Tu
31 Th		31 Tu		31 Su	31 We		31 Su		31 Fr		31 We

3

weeks until Half-Term Break.

make every day count.

ATTENDANCE MATTERS

6 days or less
absence per year

97% or above

**VERY GOOD
THIS IS YOUR
TARGET**

Between
7 and 19 days
absence per year

90% - 96%

**BELOW
EXPECTATIONS**

More
than 19 days
absence per year

Under 90%

**POOR
ATTENDANCE**

Those that **attend, achieve!**



Newsome Academy

WEEK AT A GLANCE

REFLECTIONS

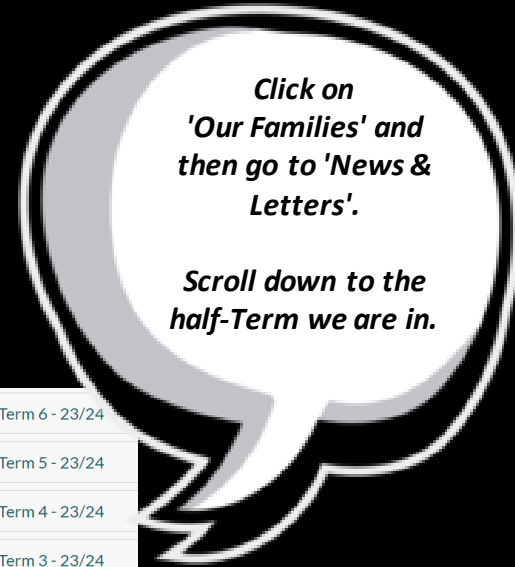
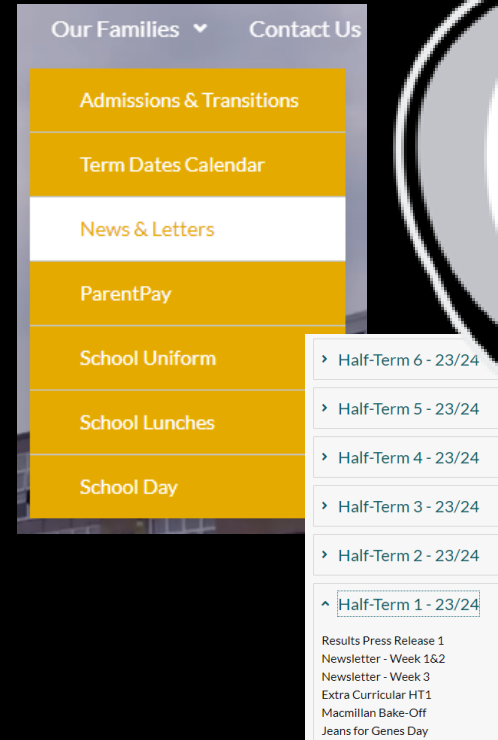
- This week I'm focussing on our curriculum and how we operate in terms of lesson structures and how we instil learning skills into your child's education.
- I'm also including some information on our commitment to ensuring we not only grow as an Academy but as a community – something that is should be important to us all.
- Christmas is will upon us and I hope you are keeping abreast of the daily Tweets we are showing to our huge following (2.8k).
- More and more families are choosing Newsome over local schools next year because of what we offer and I'm proud to be able to say we are a full school that have a very positive reputation in the community and Huddersfield as a whole! Because of this we are appointing for more staff and positions to further enhance our development and journey to 'exceptional'.



A GLANCE AT THIS WEEK...					IMPORTANT LINKS & KEY INFORMATION
MONDAY	TUESDAY	WEDNESDAY	THURSDAY	FRIDAY	
	<ul style="list-style-type: none"> • Y11 Mock Results Event (AM) • Y7 Road Safety 8.45 - 9.45 • KS2 Athletics 4-5pm 	<ul style="list-style-type: none"> • Y11 Theatre Group 9-10.30am 	<ul style="list-style-type: none"> • Y11 Parents' Eve 	<ul style="list-style-type: none"> • Christmas Jumper/Colour Day • SIP2 Virtual Visit • V21 Consultancy Day • DC1 reports sent home 	23/24 CALENDAR SCHOOL CLUBS LETTERS HOME

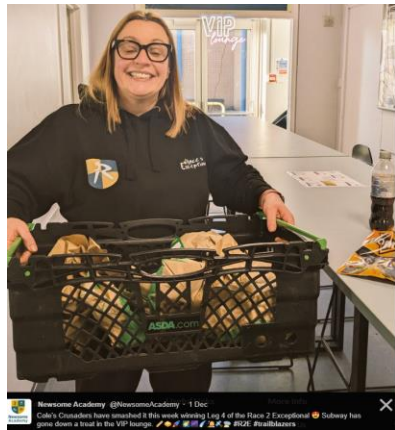
Y7	Y8	Y9	Y10	Y11	Services	Safeguarding
Ms Crossland	Ms Fletcher	Ms Sykes	Mr Naeem	Ms Hallworth Ms Carter*	Mr Shahzad Ms Gaye Mr Holmes	Ms Robinson Ms Wood Ms LeRoy Ms Brook PC Woods

Remember to keep a check on the letters section of our website. This can be located by...

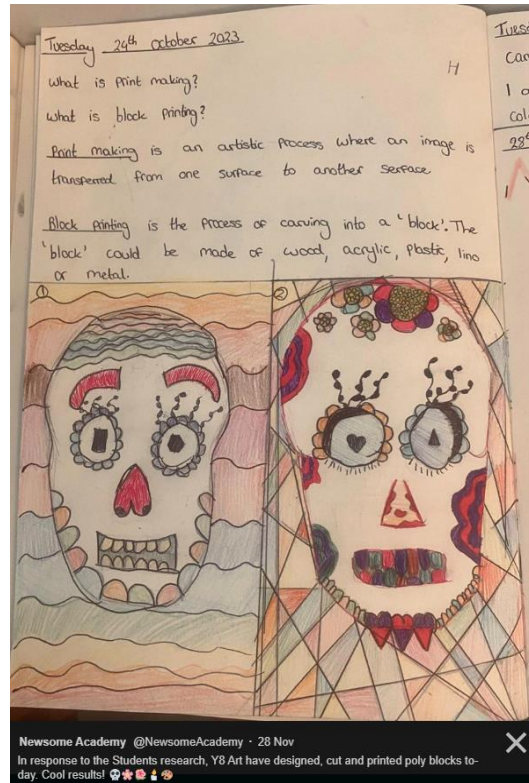




Newsome Academy @NewsomeAcademy · 20 Nov
Students are creating something special for Christmas to show their appreciation to all our staff! 🙌🏻 #YouDont!



Newsome Academy @NewsomeAcademy · 1 Dec
Cathy's Christmas have resulted in 8 this week winning 1st, 4 of the 2nd & 2 Exceptional 🎁 Subway has gone down a treat in the VIP lounge. 🙌🏻🙌🏻🙌🏻🙌🏻🙌🏻 #YouDont!



Newsome Academy @NewsomeAcademy · 28 Nov
In response to the Students research, Y8 Art have designed, cut and printed poly blocks to-day. Cool results! 🙌🏻🙌🏻🙌🏻🙌🏻



Newsome Academy @NewsomeAcademy · 1 Dec
1st in Year 8 proud to finish (as an art) with their bronze medal at a recent Draughton Artfest competition. 🙌🏻🙌🏻



Newsome Academy @NewsomeAcademy · 1 Nov
Back to work December assembly. 🙌🏻🙌🏻



Newsome Academy @NewsomeAcademy · 28 Nov
STEM Room this year is engineering! Here is the Street making Balls with local engineering company @Hillendhow WATCH THEM! SPACE. We are excited to announce we will be visiting with students at the end of the year, and there will be some very exciting STEM projects coming soon!

Connecting Hearts & Minds Every Day!





Newsome Academy

How we are continuing to ensure our **Academy** and **Community** grows to be 'Exceptional'...

What are we doing about ensuring 'exceptional' continued progress and standards?

- Our Academy has gone from strength-to-strength – exceeding local and national achievement measures and we are hugely proud of this. This isn't easy and has involved some difficult decisions over the last 6 years. It is worth it though, as our children need and deserve the very best start in life and that's what we are committed to!
- Last year and this year we continue to make difficult decisions to allow for our success to continue. This includes having to enforce what it means to be and, have the privilege to be, a Newsome 'family member' – demonstrating our values inside, and outside of school grounds.
- Sadly, the above has meant that we have removed students that have breached our Expectations Policy and not shown the pride that should come with being a member of our awesome community. Whilst this is our last resort, it must be known that this is absolutely demonstrating our commitment to both what happens in/on the Academy and what happens outside of the gates.
- We are immensely proud of our 'Newsome Family' and high expectations runs through our veins - we adore teaching, developing and interacting with your child each day and it's a privilege to do this!
- **It's important to share the lengths we will go to, to ensure your child succeeds and has the very best start in life. Look at our Twitter to see me personally express the above in-person**

What are we doing about making our 'external' community better, safer and respectable?

- As more (than ever) families are choosing to come to Newsome, we are reviewing how we continue to build systems to make it easier for you to pick your child up. Whilst we do this, we ask that you explore other alternatives to Edale Avenue if you use a car. This will support our neighbours and allow them access to their homes.
- We have also recently had to make some difficult decisions when it comes to students not demonstrating our values when they are outside of school hours – mainly anti-social behaviour. We have again had to say goodbye to those who have not been looking after our community as we expect.



Letters/Key Messages...

Discuss the events below with your children

28 November 2023

Year 11 Parents' Evening – Thursday 7th December 4.30pm – 6.30pm

[Click here](#) to see the letter

Dear Parents and Carers,

The parent-teacher meetings are to be held on Thursday 7th December 4.30pm – 6.30pm for parents of year 11 students. We will be conducting the evening at school in-person. There will also be a Progress Presentation on supporting your child through their Summer exams. We have put these before and after the appointment slots in the hope you will be able to join us for one of them.

- 1st Progress Presentation – 4pm
- 2nd Progress Presentation – 6.35pm

- To make your appointments, please login at: <https://parents-booking.co.uk/newsome>
- Follow the set-up instructions below
- You will be able to book appointments until **Wednesday 6th December at 3pm** when bookings will close.
- Here is a more in-depth guide for you should you encounter any difficulties [Parents Booking Parent Guide](#)

Xmas Jumper/Colour Day – Friday 8th December

On Friday, students are welcome to come to school in non-uniform – either sporting a Xmas Jumper OR Xmas colour. Students are to bring £1 to go towards the Save the Children Charity which this national event is raising money for. We have decided to have our 1 day later so this falls on a Friday.

PLEASE JOIN IN THE FUN!



[Click here](#) to see more info.



NEWSOME ACADEMY

PRESENTS

A Candlelight Concert

13th December

Join us for an evening of
Music, Dancing, Drama & Reading

St Paul's Church
Armitage Bridge



MULLED WINE & MINCE
PIE INCLUDED



CRAFT STALLS
RAFFLE



DOORS OPEN 5.30PM
CONCERT 6PM





The Newsome Academy
Elves are hard at work
preparing for the
'Christmas Vibe' with a host
of lovely and festive events.

Christmas Fair

Friday 24th November

Christmas Tree and decorations

Up and stunning!

Christmas Jumper/Colour Day

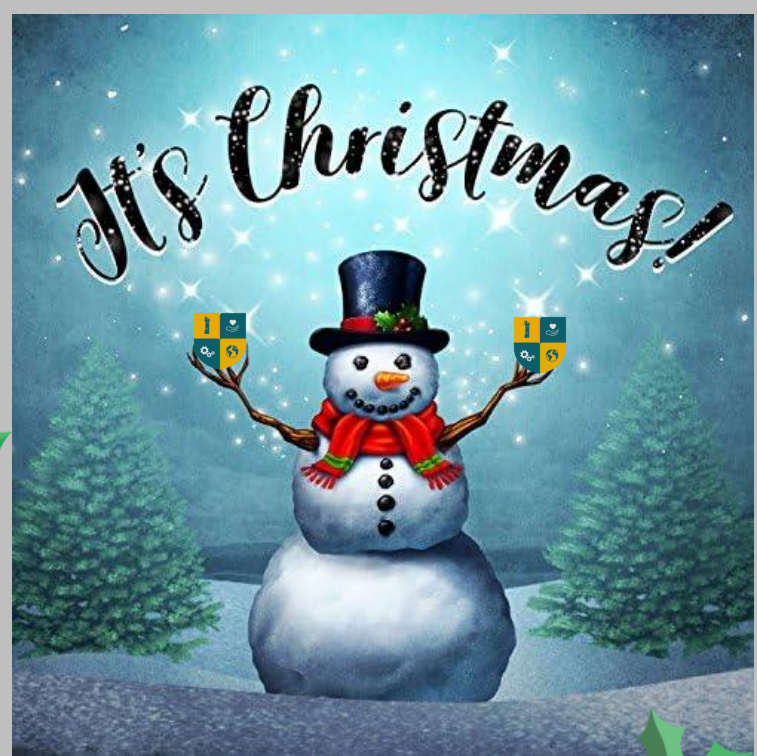
Friday 8th December.

Candlelight Concert

Wednesday 13th December

Christmas Dinner

Wednesday 20th December



**Christmas is
HERE!**



Mobile Phone Expectations & Reminders

NOTHING NEW

KEY STUDENT REMINDERS

- Mobile phones should be **switched off and out of sight in school.**
- While on school premises, **mobile phones are not to be seen or used** by students, unless instructed by an adult.
- Unless express permission is granted, mobile phones should not be used to make calls, send SMS messages, surf the internet, take photos or use any other application during the school day or while on school premises.
- **If using a mobile phone in absolute emergencies, a staff member should be present and it should be in a non public area.**
- The Bluetooth function of a mobile phone must be switched off at all times and **not be used to send images or files to other mobile phones.**
- Using mobile phones to bully and threaten other students is unacceptable. **Cyber bullying will not be tolerated.**
- Mobile phones are not to be used or taken into changing rooms or toilets or used in any situation that may cause embarrassment or discomfort to their fellow students, staff or visitors to the school.
- **It is unacceptable to take a picture of a member of staff without their permission.** In the event that this happens the student will be asked and expected to delete those images.
- Mobile phones will be confiscated if seen.
- Students must adhere to the guidelines and protocol set out by the school when using their devices. If this is not adhered to a suitable sanction will be put in place. **Mobile phones and other electronic devices are only to be used in school when instructed by a member of staff and to complete work/research tasks in an allocated period of time.**

Homework Calendar

	Monday	Tuesday	Wednesday	Thursday	Friday
Year 7	Maths	Science	French 7W/7O/7M	French 7N	English
					French 7E/7S
Year 8	Science	French		English	Maths
Year 9	French		English	Maths	Science
Year 10	Option Block A	English	Maths	Science	Option Block C
	Option Block D				Option Block B
Year 11	English	Maths	Science	Option Block C	Option Block A
				Option Block D	Option Block B

Period 6 Timetable (Y11)

	Week A (HODs Meeting)	Week B
Monday	Algebra III & German	Science
Tuesday	CPD	
Wednesday	French	English
Thursday	Geography & History	Maths
Friday	VTC (Art, PE, Food)	VTC (Art, PA, IT, Music)

Agenda

SEMINAR

*Today we will
have reminders
of **Curriculum** by
Mr Watkin...*

SKILLS TO DEVELOP LEARNING



MEMORY



META



COLLABORATIVE



LITERACY



NUMERACY



PROFESSIONAL

TEAMWORK

ASPIRATION

RESILIENCE

TOLERANCE

Why words are important

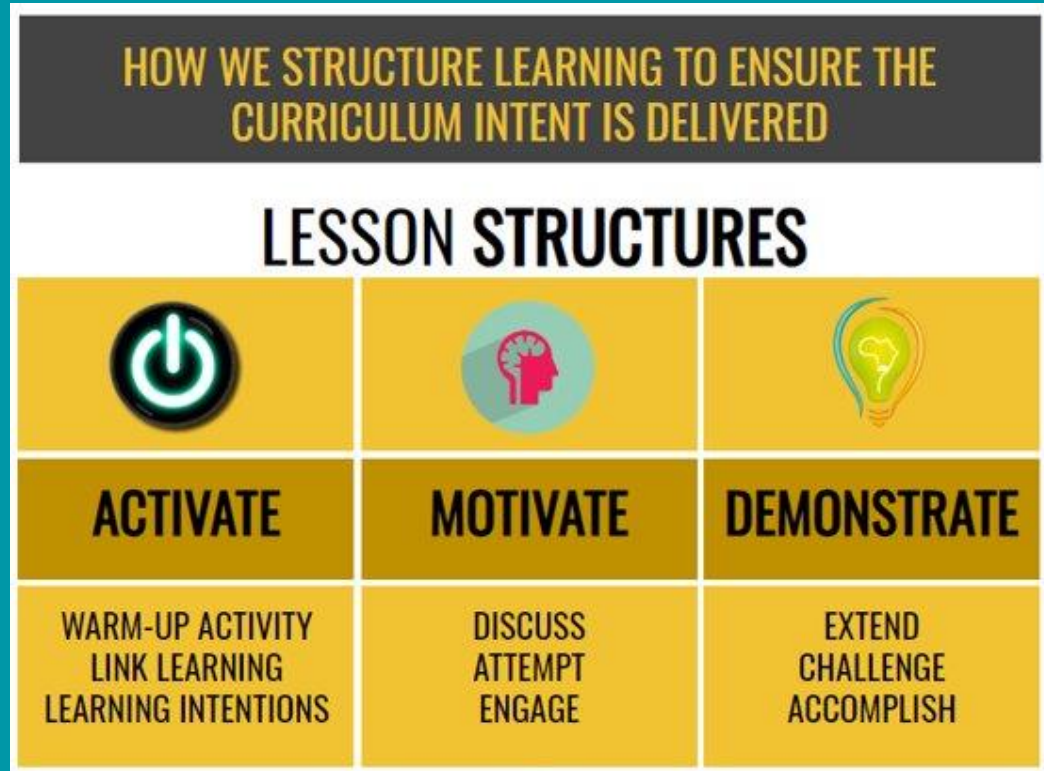
What they say about you

What they mean

The effect they can have

Lesson Structure

- These are the structures your lessons should take.
- Each chapter of the lesson should aim to get you to **think for yourself**.
- **Memory** re-call is important in every part.
- It is important that you recognise and understand each part of your lessons so you have **structure**.



Curriculum Skills

- These are the **6 core skills** that your teachers will include in their teaching.
- Each skill is deliberate and ensure you get the **best teaching** to maximise learning possible.
- It is important that **you know each skill** & can **articulate** that they mean



It is vital for your future that you **don't accept anything or anyone that disrupts your learning** and should **speak out** if this happens.

Anyone that disrupts lessons are **putting your future at a disadvantage** and this should **never be accepted** over friendship.

YOU matter.

Integrity

GCSE COURSES

Entry level maths	AQA
Entry level science	AQA
Step up to English	AQA
Art and Design (Art, craft & design)	AQA
Art and Design (Photography)	AQA
Biology	AQA
Chemistry	AQA
Combined Science Trilogy	AQA
Computer Science	AQA
English Language	AQA
English Literature	AQA
Geography	AQA
Maths	AQA
Physics	AQA
Religious Studies	AQA
Polish	AQA
Further Maths	AQA
Maths	OCR
Entry level Geography	OCR

German	Pearson Edexcel
French	Pearson Edexcel
Arabic	Pearson Edexcel
History	Pearson Edexcel
Italian	Pearson Edexcel
Persian	Pearson Edexcel
Spanish	Pearson Edexcel
Performing Arts (year 11)	Pearson Edexcel
Digital Information Technology (year 11)	Pearson Edexcel
Digital iInformation Technology (year 10)	Pearson Edexcel
Music Practice (year 10)	Pearson Edexcel
Performing Arts (year 10)	Pearson Edexcel
Functional Skills English level 2	Pearson Edexcel
Business and Enterprise	NCFE
Health and Fitness	NCFE
Food and Cookery	NCFE
Personal & Social Development	ASDAN

ALL Year 10/11 students should know what course they are studying – please keep pushing this at home.

Ensure you use the online materials that are available to support your studies.

Also use the next page to support your revision and studies.



Support Software for Learners

Each subject area uses additional software to support learning - this provides learning outside the classroom...

Subject-Specific Software Packages to Support Study

English

- [Century Tech](#)
- [Mr Bruff's Video Guides \(KS4\)](#)

Maths

- [MathsWatch](#)
- [Century Tech](#)
- [Corbett Maths](#)

Science

- [Educake](#) (main)
- [Century Tech](#)

Geography

- [GCSEPod](#)

History

- [GCSEPod](#)

RE

- [Seneca Learning](#)
- [GCSE Bitesize](#)
- [GCSEPod](#)

Languages

- [Active Learn](#)
- [Languagenut](#)

Music

- [Music - BBC Bitesize](#)
- [BandLab: Make Music Online](#)

Creative (CAPE)

- [BFI](#)
- [iAchieve](#)

Generic

- [Oak National Academy](#)
- [GCSEPod](#)
- [BBC Bitesize](#)

Promote the following to your child to build their CV skills and to ensure they have the very best opportunities in their career...

- We have various vacancies for leadership roles in school.
- These opportunities will give your child the skills and experience to put in their personal statement when applying to Colleges.
- Newsome already is a place that Colleges think highly of – we want to take this even further by giving opportunity and experience to SMASH an interview...





Year 11 Head Students

Pham Truong, Henry Taylor, Ismail Jallow, Nicole Cieciorska

Year 11 Prefects

Evangeline Bell, Yusuf Ahmed, Daniel Tawose, Inaaya Ahmed, Esme Kudya, Jenny He, Tamia Kennedy, Haya Fatima, Kaysha Lawrence, Aiesha Porter, Yashraj Mistry

Year 7 Prefects

TBC
TBC

Year 8 Prefects

TBC
TBC

Year 9 Prefects

TBC
TBC

Year 10 Prefects

TBC
TBC

**Kirklees Youth
Council**

**Tender
Leaders**

**Healthy Lifestyle
Champions**

**Mental Health
Leaders**

**Anti-Bullying
Ambassadors**

**Environmental
Leaders**



How to Apply

Create a 2-minute (maximum) video

1. Why you want to be a Prefect
2. What skills you have
3. Why you?

Email to: seniorstudents@newsomeacademy.co.uk

Deadline: Wednesday 20th December 9am





We are looking for student/s in each year group apply to be our 'Student Elves' - delivering special festive Christmas Cards from our Academy Post Box which will be installed this week.

- This role is a voluntary position and is to be over the Christmas period.
- This role is vital to ensure our **Student Hearts & Minds Strategy** is realised.
- Interested parties should be **reliable, responsible and care** for student voice. They should also be **organised** as
- Interested parties should **inform their Head of Year** by the end of the week.



Have a great week!