



**What does this image represent to you?**



THE HUMAN MEMORY

Headteacher

# BREAKFAST BRIEFING

KEY MESSAGES | CURRENT AFFAIRS | CONTEXTUALISED READING

HALF-TERM 3 **WEEK 4 (A)**  
W/C 29th **JANUARY 2024**

Useful Links

Remember to also go through your Head of Year if you need anything...

## Term Calendar

An overview of the school year (subject to some changes (assessment periods))



*Our Twitter (X) is our key info sharing platform. All families should be using this.*

## Letters Home

All the letters sent to our families. Please also add us on Twitter (X).



**WEEKLY INFORMATION FOR STUDENTS & FAMILIES**

# EXTRA-CURRICULAR ACTIVITIES: SPRING TERM 23/24 (3PM-4PM)



# ACTIVITIES

Day	Club	Location	Staff Lead	YR11 P6 WK A	YR 11 P6 WK B
<b>MONDAY</b>	<ul style="list-style-type: none"> <li>• Netball Y7 – Y10</li> <li>• Fitness</li> <li>• Homework Club – All years</li> <li>• TLC time</li> <li>• KS3 Girls scooters (12.30-1.00)</li> <li>• Cooking Club</li> </ul>	<ul style="list-style-type: none"> <li>• Sports Hall/ Astro</li> <li>• Fitness Suite</li> <li>• 606</li> <li>• TLC</li> <li>• Sports Hall</li> <li>• 602</li> </ul>	CPA/MHO GEA/JDA MYA SEND LST DF	Algebra III German	Science
<b>TUESDAY</b>	<ul style="list-style-type: none"> <li>• Wheelchair Basketball Club (invitation only)</li> </ul>	<ul style="list-style-type: none"> <li>• Sports Hall</li> </ul>	LST / SCU		
<b>WEDNESDAY</b>	<ul style="list-style-type: none"> <li>• Homework Club</li> <li>• Drama Club</li> <li>• TLC time</li> <li>• EAL / culture club</li> <li>• Programming Club</li> <li>• Girls Football</li> <li>• British Sign Language</li> <li>• Badminton</li> <li>• Table Tennis</li> </ul>	<ul style="list-style-type: none"> <li>• 606</li> <li>• Lecture Theatre</li> <li>• TLC</li> <li>• EAL / 408</li> <li>• 608</li> <li>• Field</li> <li>• HI 802</li> <li>• Sport shall</li> <li>• Gym</li> </ul>	DF DT SEND SMU / TA AAH External DC JDA SMT	French	English
<b>THURSDAY</b>	<ul style="list-style-type: none"> <li>• GCSE Art catch up Yr10</li> <li>• Drama GCSE</li> <li>• Craft club</li> <li>• Homework Club</li> <li>• Trampolineing</li> <li>• Chess Club</li> <li>• Algebra Level 3 Club (invitation only)</li> </ul>	<ul style="list-style-type: none"> <li>• 601</li> <li>• Lecture Theatre</li> <li>• 202</li> <li>• 606</li> <li>• Gym</li> <li>• Library</li> <li>• 407</li> </ul>	NPR DT CRI MYA JDA/GEA DHA MAS	Geography History	Maths
<b>FRIDAY</b>	Yr10 catch up performing arts WK A Yr 10 catch up NCFE H&F WK A			NCFE H&F NCFE F&C Art	BTEC Music EDUCAS PA BTEC IT Art

# Homework Calendar

	Monday	Tuesday	Wednesday	Thursday	Friday
Year 7	Maths	Science	French 7W/7O/7M	French 7N	English
					French 7E/7S
Year 8	Science	French		English	Maths
Year 9	French		English	Maths	Science
Year 10	Option Block A	English	Maths	Science	Option Block C
	Option Block D				Option Block B
Year 11	English	Maths	Science	Option Block C	Option Block A
				Option Block D	Option Block B

# Period 6 Timetable (Y11)

	Week A (HODs Meeting)	Week B
Monday	Algebra III & German	Science
Tuesday	CPD	
Wednesday	French	English
Thursday	Geography & History	Maths
Friday	VTC (Art, PE, Food)	VTC (Art, PA, IT, Music)

# School calendar 2023/24



Newsome Academy

2023					2024						
August	September	October	November	December	January	February	March	April	May	June	July
1 Tu	1 Fr	1 Su	1 We	1 Fr	1 Mo <small>New Year's Day</small>	1 Th	1 Fr	1 Mo <small>Easter Monday</small>	1 We	1 Sa	1 Mo
2 We	2 Sa	2 Mo	2 Th	2 Sa	2 Tu	2 Fr	2 Sa	2 Tu	2 Th	2 Su	2 Tu
3 Th	3 Su	3 Tu	3 Fr	3 Su	3 We	3 Sa	3 Su	3 We	3 Fr	3 Mo	3 We
4 Fr	4 Mo	4 We	4 Sa	4 Mo	4 Th	4 Su	4 Mo	4 Th	4 Sa	4 Tu	4 Th
5 Sa	5 Tu	5 Th	5 Su	5 Tu	5 Fr	5 Mo	5 Tu	5 Fr	5 Su	5 We	5 Fr
6 Su	6 We	6 Fr	6 Mo	6 We	6 Sa	6 Tu	6 We	6 Sa	6 Mo <small>Early May Bk. Hol.</small>	6 Th	6 Sa
7 Mo	7 Th	7 Sa	7 Tu	7 Th	7 Su	7 We	7 Th	7 Su	7 Tu	7 Fr	7 Su
8 Tu	8 Fr	8 Su	8 We	8 Fr	8 Mo	8 Th	8 Fr	8 Mo	8 We	8 Sa	8 Mo
9 We	9 Sa	9 Mo	9 Th	9 Sa	9 Tu	9 Fr	9 Sa	9 Tu	9 Th	9 Su	9 Tu
10 Th	10 Su	10 Tu	10 Fr	10 Su	10 We	10 Sa	10 Su	10 We	10 Fr	10 Mo	10 We
11 Fr	11 Mo	11 We	11 Sa	11 Mo	11 Th	11 Su	11 Mo	11 Th	11 Sa	11 Tu	11 Th
12 Sa	12 Tu	12 Th	12 Su	12 Tu	12 Fr	12 Mo	12 Tu	12 Fr	12 Su	12 We	12 Fr
13 Su	13 We	13 Fr	13 Mo	13 We	13 Sa	13 Tu	13 We	13 Sa	13 Mo <small>GCSEs</small>	13 Th	13 Sa
14 Mo	14 Th	14 Sa	14 Tu	14 Th	14 Su	14 We	14 Th	14 Su	14 Tu	14 Fr	14 Su
15 Tu	15 Fr	15 Su	15 We	15 Fr	15 Mo	15 Th	15 Fr	15 Mo	15 We	15 Sa	15 Mo
16 We	16 Sa	16 Mo	16 Th	16 Sa	16 Tu	16 Fr	16 Sa	16 Tu	16 Th	16 Su	16 Tu
17 Th	17 Su	17 Tu	17 Fr	17 Su	17 We	17 Sa	17 Su	17 We	17 Fr	17 Mo	17 We
18 Fr	18 Mo	18 We	18 Sa	18 Mo	18 Th	18 Su	18 Mo	18 Th	18 Sa	18 Tu	18 Th
19 Sa	19 Tu	19 Th	19 Su	19 Tu	19 Fr	19 Mo	19 Tu	19 Fr	19 Su	19 We	19 Fr
20 Su	20 We	20 Fr	20 Mo	20 We	20 Sa	20 Tu	20 We	20 Sa	20 Mo	20 Th	20 Sa
21 Mo	21 Th	21 Sa	21 Tu	21 Th	21 Su	21 We	21 Th	21 Su	21 Tu	21 Fr	21 Su
22 Tu	22 Fr	22 Su	22 We	22 Fr	22 Mo	22 Th	22 Fr	22 Mo	22 We	22 Sa	22 Mo
23 We	23 Sa	23 Mo	23 Th	23 Su	23 Tu	23 Fr	23 Sa	23 Tu	23 Th	23 Su	23 Tu
24 Th	24 Su	24 Tu	24 Fr	24 Su	24 We	24 Sa	24 Su	24 We	24 Fr	24 Mo	24 We
25 Fr	25 Mo	25 We	25 Sa	25 Mo	25 Th	25 Su	25 Mo	25 Th	25 Sa	25 Tu	25 Th
26 Sa	26 Tu	26 Th	26 Su	26 Tu	26 We	26 Sa	26 Mo	26 Tu	26 Fr	26 We	26 Fr
27 Su	27 We	27 Fr	27 Mo	27 We	27 Tu	27 We	27 We	27 Sa	27 Mo <small>Spring Bk. Hol.</small>	27 Th	27 Sa
28 Mo <small>August Bk. Hol.</small>	28 Th	28 Sa	28 Tu	28 Th	28 Su	28 We	28 Th	28 Su	28 Tu	28 Fr	28 Su
29 Tu	29 Fr	29 Su	29 We	29 Fr	29 Mo	29 Th	29 Fr <small>Good Friday</small>	29 Mo	29 We	29 Sa	29 Mo
30 We	30 Sa	30 Mo	30 Th	30 Sa	30 Tu	30 We	30 Sa	30 Tu	30 Th	30 Su	30 Tu
31 Th	31 Su	31 Tu	31 Fr	31 Su	31 We	31 Th	31 Su	31 Fr	31 Th	31 We	31 We



make every day count.

2

weeks until Half-Term Break.



# Newsome Academy

## WEEK AT A GLANCE

### THIS WEEK'S DIARY OF AMAZINGNESS!

[23/24 CALENDAR](#) | [SCHOOL CLUBS](#) | [LETTERS HOME](#)

<b>Monday</b>	<ul style="list-style-type: none"> <li>The usual warm welcome from our lovely staff!</li> </ul>
<b>Tuesday</b>	<ul style="list-style-type: none"> <li>Parent Workshop (J Brook) 9:15 – 10:30. This was mentioned in last week's Newsletter.</li> </ul>
<b>Wednesday</b>	
<b>Thursday</b>	<ul style="list-style-type: none"> <li>SEND Coffee Morning 9:30-11. The invite has been sent out by Ms Hall. Contact us if you have not got this and would like to atytend.</li> </ul>
<b>Friday</b>	


## TOUCH BASE

- A jam-packed week this week with more wonderful things happening.
- Y9 Families** – please make sure you attend Tuesday's Progress/Options Evening. Your involvement is vital for their success. I have linked the letter that you have already been sent to the right.
- Students have been asking about how to claim their **rewards prizes** on our ClassCharts Online Shop. Please see your Head of Year for more info!
- Remember to keep supporting us in supporting your **child** to attend everyday so they have the **best possible chance** at achieving. We cannot support any in-term holidays.

## ATTENDANCE MATTERS



Y7	Y8	Y9	Y10	Y11	Services	Safeguarding
Ms Crossland	Ms Fletcher	Ms Sykes	Ms Parsonage	Ms Hallworth Ms Carter	Ms Gaye Mr Holmes Ms Hill Ms Carr	Ms Robinson Ms Wood Ms LeRoy Ms Brook



## Exit Routes – Pathways

We have been in discussions with residents on the Edale Estate and have adjusted some systems to support our neighbours. Please ensure you do not go onto the car park and stay away from access pathways to houses to help our elderly residents feel safe and secure.

## HOMEWORK

Families have asked about our homework policy. I remind everyone that ALL students have work to do in abundance! KS3 students are to complete their Knowledge Organisers ([click here](#)) and KS4 students are to follow their revision Guides that we buy for them (few schools do this!). If you have any questions – please get in touch with your child's Head of Year.

## MOBOBILE PHONES

- Some students (and families) are confused with our policy on mobile phones.
- Mobile phones are not to be used at any time unless with the consent and supervision of an adult in school.
- Should families not support our policy, it will contradict Academy Policy.



SEND  
Coffee  
Meet

- Are you a parent / guardian of a child with SEND?
- Do you want the opportunity to meet professionals and other likeminded parents?
- Join us for our SEND Coffee Meet - a chance to chat, meet and enjoy a piece of cake!

Join us on:

1st Feb 2024

9:30-11am

Newsome Academy





# Agenda

SEMINAR

Today we will  
have reminders of  
**Memory Re-Call.**



## SKILLS TO DEVELOP LEARNING



MEMORY



META



COLLABORATIVE



LITERACY



NUMERACY



PROFESSIONAL

TEAMWORK

ASPIRATION

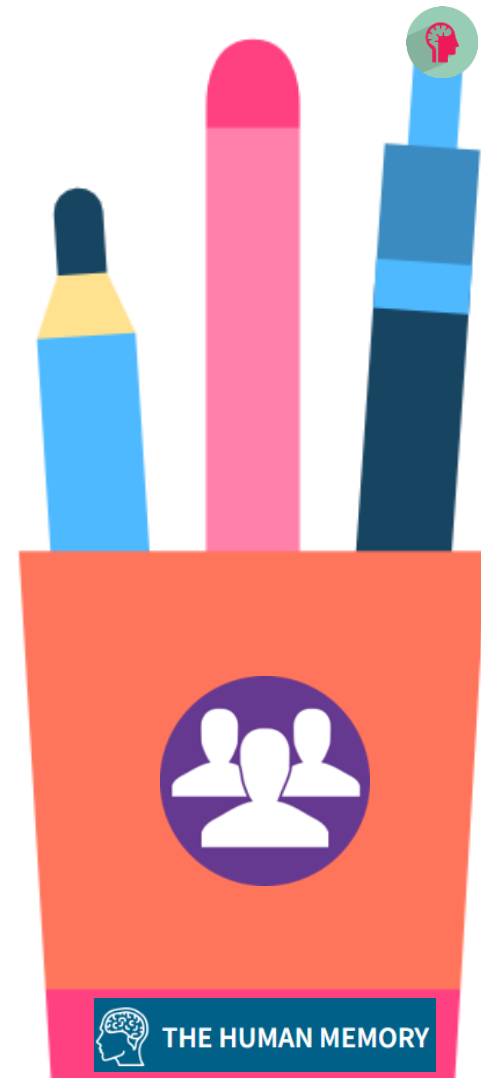
RESILIENCE

TOLERANCE

## Metacognition

Metacognition is the process of thinking about one's own thinking and learning.

Metacognition: intentional thinking about how you think and learn.



# COLLABORATION

- A collaborative learning approach involves pupils **working together** on activities or learning tasks in a **group** small enough to ensure that everyone participates. Pupils in the group may work on separate tasks **contributing** to a common overall outcome, or work **together** on a **shared task**.

- I don't like them...
- They get on my nerves...
- They've got beef with me...
- We're not friends...
- They're weird...
- I don't like them...



SO WHAT?

**Those who want a successful career will develop enough to be able to work with any personality...**



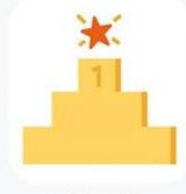
## The Top 10 Soft Skills



Communication



Self-motivation



Leadership



Responsibility



Teamwork



Problem solving



Decisiveness



Ability to Work  
Under Pressure  
and Time Management



Flexibility



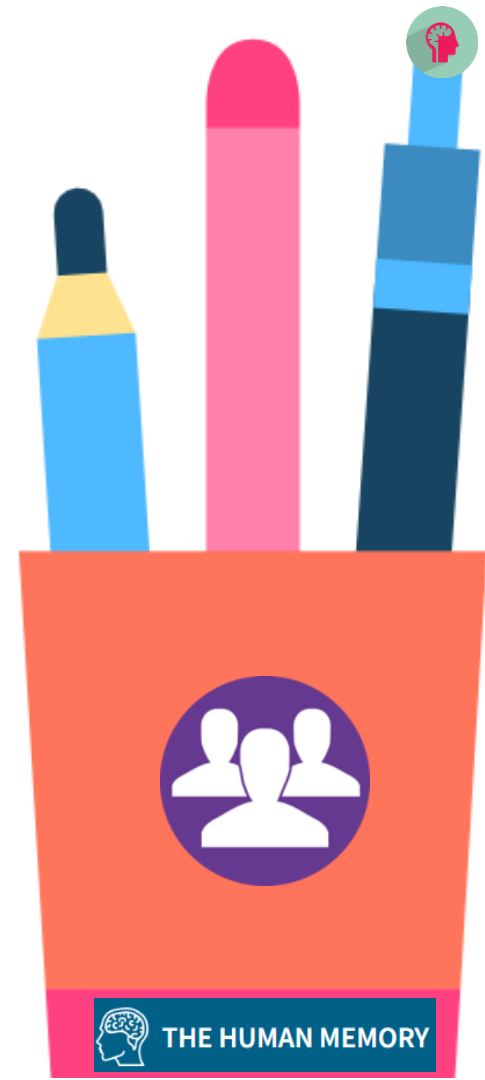
Negotiation  
and Conflict Resolution

- **Employers/Colleges EXPECT you to have certain qualities.**
- As part of growing up – you **MUST** be able adapt and **manage your emotions.**
- **YEAR 9 should well be aware** of this in their recent Options information...



# Be Your Own Advocate

- Being “unemployable” is a term used to describe the difficulty of gaining sustainable employment in the current job market. It is often the result of either not having the qualifications or experience employers need or failing to demonstrate them in a way that catches their attention.



# Attendance Rewards



## ATTENDANCE MATTERS

6 days or less absence per year 97% or above <b>VERY GOOD THIS IS YOUR TARGET</b>	Between 7 and 19 days absence per year 90% - 96% <b>BELOW EXPECTATIONS</b>	More than 19 days absence per year Under 90% <b>POOR ATTENDANCE</b>
---	--	---



**JUMP  
INTO  
JANUARY**



HERE ARE THIS WEEK'S WINNERS...	
YEAR 7	
YEAR 8	
YEAR 9	
YEAR 10	
YEAR 11	
OVERALL	

**To be shared in Seminar!**



*Have a great week!*