



What does this image represent to you?



Headteacher

BREAKFAST BRIEFING



KEY MESSAGES | CURRENT AFFAIRS | CONTEXTUALISED READING

HALF-TERM 3 **WEEK 5 (B)**
W/C 5th **FEBRUARY 2024**

Useful Links

Remember to also go through your Head of Year if you need anything...

Term Calendar

An overview of the school year (subject to some changes (assessment periods))



Our Twitter (X) is our key info sharing platform. All families should be using this.

Letters Home

All the letters sent to our families. Please also add us on Twitter (X).



WEEKLY INFORMATION FOR STUDENTS & FAMILIES

EXTRA-CURRICULAR ACTIVITIES: SPRING TERM 23/24 (3PM-4PM)



ACTIVITIES

Day	Club	Location	Staff Lead	YR11 P6 WK A	YR 11 P6 WK B
MONDAY	<ul style="list-style-type: none"> Netball Y7 – Y10 Fitness Homework Club – All years TLC time KS3 Girls scooters (12.30-1.00) Cooking Club 	<ul style="list-style-type: none"> Sports Hall/ Astro Fitness Suite 606 TLC Sports Hall 602 	CPA/MHO GEA/JDA MYA SEND LST DF	Algebra III German	Science
TUESDAY	<ul style="list-style-type: none"> Wheelchair Basketball Club (invitation only) 	<ul style="list-style-type: none"> Sports Hall 	LST / SCU		
WEDNESDAY	<ul style="list-style-type: none"> Homework Club Drama Club TLC time EAL / culture club Programming Club Girls Football British Sign Language Badminton Table Tennis 	<ul style="list-style-type: none"> 606 Lecture Theatre TLC EAL / 408 608 Field HI 802 Sport shall Gym 	DF DT SEND SMU / TA AAH External DC JDA SMT	French	English
THURSDAY	<ul style="list-style-type: none"> GCSE Art catch up Yr10 Drama GCSE Craft club Homework Club Trampolineing Chess Club Algebra Level 3 Club (invitation only) 	<ul style="list-style-type: none"> 601 Lecture Theatre 202 606 Gym Library 407 	NPR DT CRI MYA JDA/GEA DHA MAS	Geography History	Maths
FRIDAY	Yr10 catch up performing arts WK A Yr 10 catch up NCFE H&F WK A			NCFE H&F NCFE F&C Art	BTEC Music EDUCAS PA BTEC IT Art

Homework Calendar

	Monday	Tuesday	Wednesday	Thursday	Friday
Year 7	Maths	Science	French 7W/7O/7M	French 7N	English
					French 7E/7S
Year 8	Science	French		English	Maths
Year 9	French		English	Maths	Science
Year 10	Option Block A	English	Maths	Science	Option Block C
	Option Block D				Option Block B
Year 11	English	Maths	Science	Option Block C	Option Block A
				Option Block D	Option Block B

Period 6 Timetable (Y11)

	Week A (HODs Meeting)	Week B
Monday	Algebra III & German	Science
Tuesday	CPD	
Wednesday	French	English
Thursday	Geography & History	Maths
Friday	VTC (Art, PE, Food)	VTC (Art, PA, IT, Music)

School calendar 2023/24



2023					2024						
August	September	October	November	December	January	February	March	April	May	June	July
1 Tu	1 Fr	1 Su	1 We	1 Fr	1 Th	1 Fr	1 Sa	1 Mo <i>Easter Monday</i> 14	1 We	1 Sa	1 Mo 27
2 We	2 Sa	2 Mo 40	2 Th	2 Sa	2 Fr	2 Sa	2 Tu	2 Tu	2 Th	2 Su	2 Tu
3 Th	3 Su	3 Tu	3 Fr	3 Su	3 Sa	3 Su	3 We	3 We	3 Fr	3 Mo 23	3 We
4 Fr	4 Mo 16	4 We	4 Sa	4 Mo 49	4 Th	4 Su	4 Mo 10	4 Th	4 Sa	4 Tu	4 Th
5 Sa	5 Tu	5 Th	5 Su	5 Tu	5 Fr	5 Mo 6	5 Tu	5 Fr	5 Su	5 We	5 Fr
6 Su	6 We	6 Fr	6 Mo 45	6 We	6 Sa	6 Tu	6 We	6 Sa	6 Mo <i>Early May Bk. Hol.</i> 19	6 Th	6 Sa
7 Mo 32	7 Th	7 Sa	7 Tu	7 Th	7 Su	7 We	7 Th	7 Su	7 Tu	7 Fr	7 Su
8 Tu	8 Fr	8 Su	8 We	8 Fr	8 Mo	8 Th	8 Fr	8 Mo 15	8 We	8 Sa	8 Mo 28
9 We	9 Sa	9 Mo 41	9 Th	9 Sa	9 Tu	9 Fr	9 Sa	9 Tu	9 Th	9 Su	9 Tu
10 Th	10 Su	10 Tu	10 Fr	10 Su	10 We	10 Sa	10 Su	10 We	10 Fr	10 Mo 24	10 We
11 Fr	11 Mo 37	11 We	11 Sa	11 Mo 50	11 Th	11 Su	11 Mo 15	11 Th	11 Sa	11 Tu	11 Th
12 Sa	12 Tu	12 Th	12 Su	12 Tu	12 Fr	12 Mo 7	12 Tu	12 Fr	12 Su	12 We	12 Fr
13 Su	13 We	13 Fr	13 Mo 46	13 We	13 Sa	13 Tu	13 We	13 Sa	13 Mo <i>GCSEs</i> 20	13 Th	13 Sa
14 Mo 33	14 Th	14 Sa	14 Tu	14 Th	14 Su	14 We	14 Th	14 Su	14 Tu	14 Fr	14 Su
15 Tu	15 Fr	15 Su	15 We	15 Fr	15 Mo 31	15 Th	15 Fr	15 Mo 16	15 We	15 Sa	15 Mo 29
16 We	16 Sa	16 Mo 42	16 Th	16 Sa	16 Tu	16 Fr	16 Sa	16 Tu	16 Th	16 Su	16 Tu
17 Th	17 Su	17 Tu	17 Fr	17 Su	17 We	17 Sa	17 Su	17 We	17 Fr	17 Mo 25	17 We
18 Fr	18 Mo 38	18 We	18 Sa	18 Mo 51	18 Th	18 Su	18 Mo 12	18 Th	18 Sa	18 Tu	18 Th
19 Sa	19 Tu	19 Th	19 Su	19 Tu	19 Fr	19 Mo 8	19 Tu	19 Fr	19 Su	19 We	19 Fr
20 Su	20 We	20 Fr	20 Mo 47	20 We	20 Sa	20 Tu	20 We	20 Sa	20 Mo 21	20 Th	20 Sa
21 Mo 34	21 Th	21 Sa	21 Tu	21 Th	21 Su	21 We	21 Th	21 Su	21 Tu	21 Fr	21 Su
22 Tu	22 Fr	22 Su	22 We	22 Fr	22 Mo 4	22 Th	22 Fr	22 Mo 17	22 We	22 Sa	22 Mo 30
23 We	23 Sa	23 Mo 43	23 Th	23 Sa	23 Tu	23 Fr	23 Sa	23 Tu	23 Th	23 Su	23 Tu
24 Th	24 Su	24 Tu	24 Fr	24 Su	24 We	24 Sa	24 Su	24 We	24 Fr	24 Mo 26	24 We
25 Fr	25 Mo 39	25 We	25 Sa	25 Mo <i>Christmas Day</i>	25 Th	25 Su	25 Mo 13	25 Th	25 Sa	25 Tu	25 Th
26 Sa	26 Tu	26 Th	26 Su	26 Tu <i>Boxing Day</i>	26 Fr	26 Mo 5	26 Tu	26 Fr	26 Su	26 We	26 Fr
27 Su	27 We	27 Fr	27 Mo 48	27 We 52	27 Sa	27 Tu	27 We	27 Sa	27 Mo <i>Spring Bk. Hol.</i> 22	27 Th	27 Sa
28 Mo <i>August Bk. Hol.</i> 35	28 Th	28 Sa	28 Tu	28 Th	28 Su	28 We	28 Th	28 Su	28 Tu	28 Fr	28 Su
29 Tu	29 Fr	29 Su	29 We	29 Fr	29 Mo 6	29 Th	29 Fr <i>Good Friday</i>	29 Mo 18	29 We	29 Sa	29 Mo 31
30 We	30 Sa	30 Mo 44	30 Th	30 Sa	30 Tu		30 Sa	30 Tu	30 Th	30 Su	30 Tu
31 Th		31 Tu		31 Su	31 We		31 Su		31 Fr		31 We

1

weeks until Half-Term Break.

make every day count.



Newsome Academy

THIS WEEK'S DIARY OF AMAZINGNESS!

[23/24 CALENDAR](#) | [SCHOOL CLUBS](#) | [LETTERS HOME](#)

Monday	<ul style="list-style-type: none"> The usual warm welcome by our staff
Tuesday	<ul style="list-style-type: none"> Year 10 Progress Evening
Wednesday	<ul style="list-style-type: none"> Macbeth Theatre Group Macbeth Theatre Group ALL Y11 LT (P1-2) TLB Theatre - Paper Birds 'Feel Me' 3-5pm in school Berlin Trip Departs (23:45)
Thursday	
Friday	<ul style="list-style-type: none"> Y11 Berlin Trip (return 11/2)

TOUCH BASE


- Students will be departing to Germany this week along with a host of other exciting trips and visits.
- Year 9 are to have completed their Options Form for Monday this week.
- We break up for Half-Term on Friday for 1 week. Students return on Monday 19th February at normal school times.
- Please use the Study Guide through the holidays to ensure learning continues. [Click here](#) to see the Study Guide.
- Remember to promote **GCSEPod** to Y10 and Y11 students!

WEEK AT A GLANCE

ATTENDANCE MATTERS



Y7	Y8	Y9	Y10	Y11	Services	Safeguarding
Ms Crossland	Ms Fletcher	Ms Sykes	Ms Parsonage	Ms Hallworth Ms Carter	Ms Gaye Mr Holmes Ms Hill Ms Carr	Ms Robinson Ms Wood Ms LeRoy Ms Brook



Exit Routes – Pathways

We have been in discussions with residents on the Edale Estate and have adjusted some systems to support our neighbours. Please ensure you do not go onto the car park and stay away from access pathways to houses to help our elderly residents feel safe and secure.

HOMEWORK

Families have asked about our homework policy. I remind everyone that ALL students have work to do in abundance! KS3 students are to complete their Knowledge Organisers ([click here](#)) and KS4 students are to follow their revision Guides that we buy for them (few schools do this!). If you have any questions – please get in touch with your child's Head of Year.

MOBILE PHONES

- Some students (and families) are confused with our policy on mobile phones.
- Mobile phones are not to be used at any time unless with the consent and supervision of an adult in school.
- Should families not support our policy, it will contradict Academy Policy.



SEND
Coffee
Meet

- Are you a parent / guardian of a child with SEND?
- Do you want the opportunity to meet professionals and other likeminded parents?
- Join us for our SEND Coffee Meet - a chance to chat, meet and enjoy a piece of cake!

Join us on:

1st Feb 2024

9:30-11am

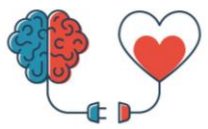
Newsome Academy





Newsome
Academy

POST



Hearts & Minds Student Voice Box

- **Looking after personal hygiene.** There has been a mention of the importance to mention how we take care of our body and health.
- **Rice in Canteen.** A mention has been passed on about the type of rice that is available at lunchtime.
- **Line-Ups in cold weather.** It has been mentioned about having to standing the cold early in the morning. Remember we have early opening and free breakfast.
- **Culture Day** – We have been asked if we can have our own Culture Day. Remember we have regular food from all around the world every day (street food). The Student Leadership Team will have a look at this for you.

Remember to post any feedback in our Post Box so we can further improve your experience!

The Student Leadership Team will use this in their regular meetings.

Agenda

SEMINAR

*Today we will
have reminders of
Careers.*

SKILLS TO DEVELOP LEARNING



MEMORY



META



COLLABORATIVE



LITERACY



NUMERACY



PROFESSIONAL

TEAMWORK

ASPIRATION

RESILIENCE

TOLERANCE

Metacognition

Metacognition is the process of thinking about one's own thinking and learning.

Metacognition: intentional thinking about how you think and learn.

SAVE THE DATE!

**NATIONAL
APPRENTICESHIP
WEEK 2024**

5-11 FEBRUARY 2024

WWW.AMAZINGAPPRENTICESHIPS.COM/NAW



**Newsome
Academy**



Apprenticeships

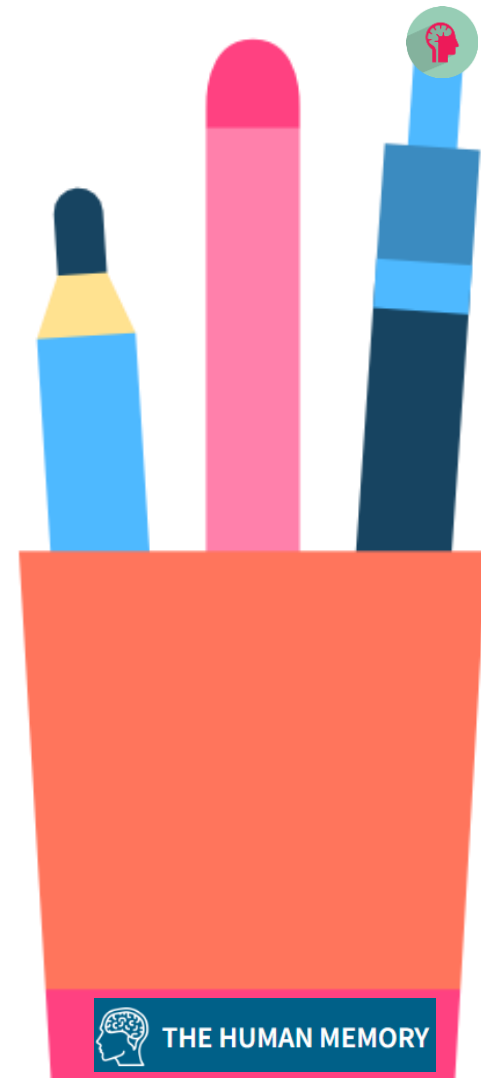
National Apprenticeship Week
5th to 11th February 2024

**SKILLS
FOR LIFE**

National Apprenticeship Week (NAW) takes place between 5 to 11 February 2024 and is an opportunity for the education and skills sector to celebrate the achievements of apprentices around the country and the positive impact they make to communities, businesses, and the wider economy.

The theme for National Apprenticeship Week 2024 is "Skills for Life"; reflecting on how apprenticeships can help individuals to develop the skills and knowledge required for a rewarding career, and businesses to develop a talented workforce that is equipped with future-ready skills.

[CLICK HERE TO ACCESS THE ASSEMBLY FILM](#)



KEY STAGE 4

KEY STAGE 5

18+

**GCSEs
and
others**

**Options
16+**

**Options
18+**

A levels & vocational courses in Sixth Form

A levels & vocational courses at Further Education College

Degree at University or FE college

T Levels at Further Education College

Traineeship or study programme

Employment

Foundation courses

Intermediate Apprenticeship

Advanced Apprenticeship

Degree or Higher level apprenticeship

Job or volunteering (minimum 20 hours per week) with recognised training





Apprenticeships

National Apprenticeship Week
5th to 11th February 2024

**SKILLS
FOR LIFE**

C+K

Newsome Academy

Year 11 Destinations 2023

The Facts

100%

stayed in learning
at the end of Year 11

40.20%

progressed onto A levels at a 6th form
college or school 6th form

56.86%

progressed onto a
full-time vocational programme

2.94%

of Year 11 secured
an Apprenticeship

Top 3 College/Sixth Form Destinations

Kirklees College: 48
Huddersfield New College: 22
Greenhead College: 19

Full-time Education Course Level

Total % of students



Chat

Support, advice and guidance
for young people in
Calderdale and Kirklees

01484 213856

chat@ckcareers.org.uk

Facebook messenger

Other College/Sixth Form Destinations

Creative Media Studio School: 2
Calderdale College: 2
Askham Bryan: 2
ESPFA: 1

Educated out of area: 2
Educated abroad: 1

**+MY
DIRECTIONS
.CO.UK**



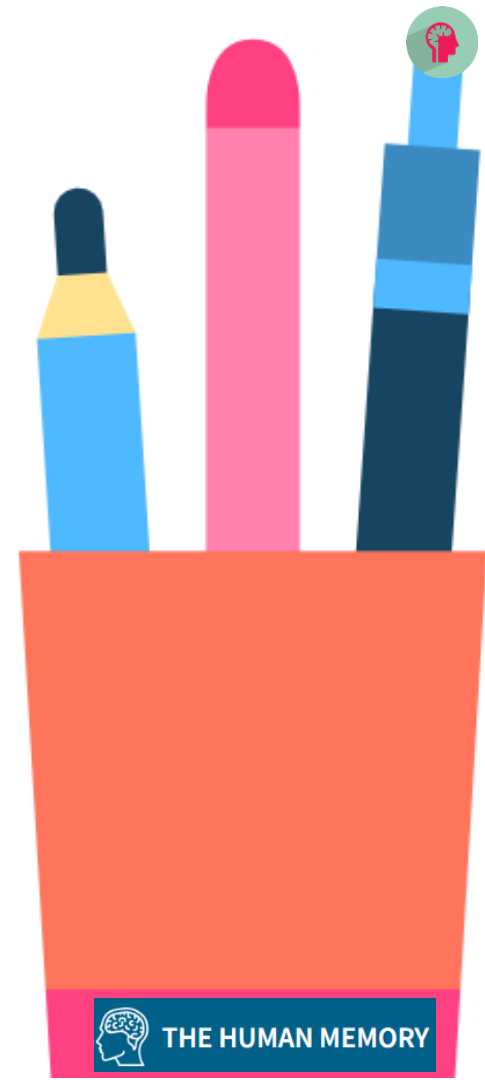
THE HUMAN MEMORY



Apprenticeships

National Apprenticeship Week
5th to 11th February 2024

- Look at the classroom doors every room around the academy will have a poster relating to the apprenticeships you can do in that subject.
- As part of the activate session of your lessons you will see apprenticeship videos linked to the subject.
- There will be activities during the lessons also.
- Parents and Carers have a advice area on our website.
- In your team time there will be activities to complete and a videos to watch.

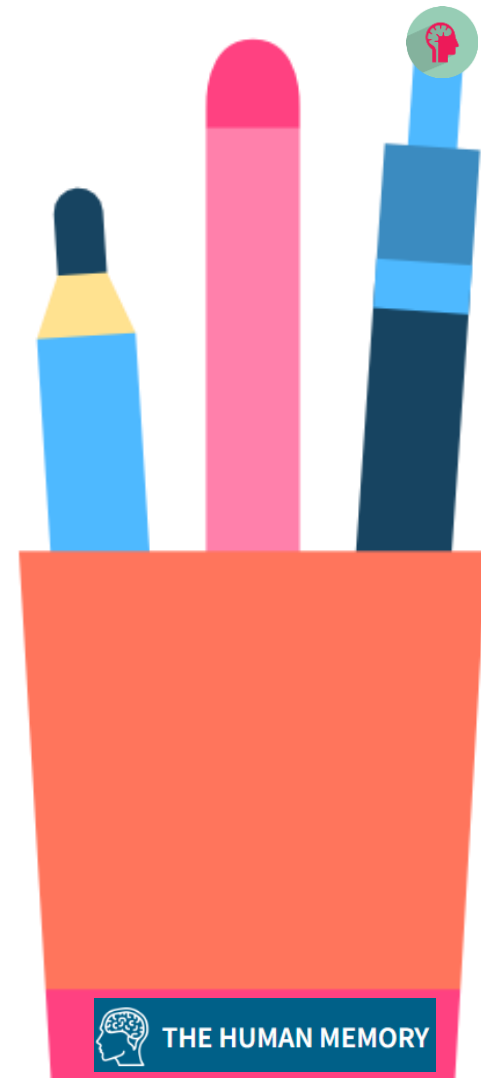




Apprenticeships

National Apprenticeship Week
5th to 11th February 2024

- <https://amazingapprenticeships.com/resource/the-apprenticeship-quiz-2024/>
- <https://amazingapprenticeships.com/resource/key-apprenticeships-terms-wordwall/>
- <https://amazingapprenticeships.com/resource/whack-a-mole-game-edition-2-wordwall/>



THE HUMAN MEMORY

Find out more about apprenticeships!



Apprenticeships.gov.uk



AmazingApprenticeships.com
Free resources and information



The Big Assembly
Tuesday 6th
February



Apply for apprenticeship vacancies through Find an Apprenticeship

Attendance Rewards



ATTENDANCE MATTERS

<p>6 days or less absence per year 97% or above VERY GOOD THIS IS YOUR TARGET</p>	<p>Between 7 and 19 days absence per year 90% - 96% BELOW EXPECTATIONS</p>	<p>More than 19 days absence per year Under 90% POOR ATTENDANCE</p>
--	---	--



**JUMP
INTO
JANUARY**



To be shared in Seminar!

Attendance Rewards



ATTENDANCE MATTERS

6 days or less absence per year 97% or above VERY GOOD THIS IS YOUR TARGET	Between 7 and 19 days absence per year 90% - 96% BELOW EXPECTATIONS	More than 19 days absence per year Under 90% POOR ATTENDANCE
---	--	---



**JUMP
INTO
JANUARY**



HERE ARE THIS WEEK'S WINNERS...

YEAR 7	HIR 98.40 %
YEAR 8	LDE 99.20%
YEAR 9	GEA 98.11 %
YEAR 10	FBR 95.52%
YEAR 11	KHO 99.17%
OVERALL	Year 8 94.80%

To be shared in Seminar!



Have a great week!