

Headteacher

# BREAKFAST BRIEFING

KEY MESSAGES | CURRENT AFFAIRS | CONTEXTUALISED READING

HALF-TERM 4 **WEEK 1 (A)**  
W/C 19th **FEBRUARY 2024**

Useful Links

Remember to also go through your Head of Year if you need anything...

## Term Calendar

An overview of the school year (subject to some changes (assessment periods))



*Our Twitter (X) is our key info sharing platform. All families should be using this.*

## Letters Home

All the letters sent to our families. Please also add us on Twitter (X).

Our Trust Our Family



Our spirit of excellence work collaboratively to create a trust Where Hearts & Minds Connect with value-driven partners to ensure education impacts positively on students, staff and communities we serve

**WEEKLY INFORMATION FOR STUDENTS & FAMILIES**



# ACTIVITIES

## EXTRA-CURRICULAR ACTIVITIES: SPRING TERM 23/24 (3PM-4PM)

Day	Club	Location	Staff Lead	YR11 P6 WK A	YR 11 P6 WK B
<b>MONDAY</b>	<ul style="list-style-type: none"> <li>Netball Y7 – Y10</li> <li>Fitness</li> <li>Homework Club – All years</li> <li>TLC time</li> <li>KS3 Girls scooters (12.30-1.00)</li> <li>Cooking Club</li> </ul>	<ul style="list-style-type: none"> <li>Sports Hall/ Astro</li> <li>Fitness Suite</li> <li>606</li> <li>TLC</li> <li>Sports Hall</li> <li>602</li> </ul>	CPA/MHO GEA/JDA MYA SEND LST DF	Algebra III German	Science
<b>TUESDAY</b>	<ul style="list-style-type: none"> <li>Wheelchair Basketball Club (invitation only)</li> </ul>	<ul style="list-style-type: none"> <li>Sports Hall</li> </ul>	LST / SCU		
<b>WEDNESDAY</b>	<ul style="list-style-type: none"> <li>Homework Club</li> <li>Drama Club</li> <li>TLC time</li> <li>EAL / culture club</li> <li>Programming Club</li> <li>Girls Football</li> <li>British Sign Language</li> <li>Badminton</li> <li>Table Tennis</li> </ul>	<ul style="list-style-type: none"> <li>606</li> <li>Lecture Theatre</li> <li>TLC</li> <li>EAL / 408</li> <li>608</li> <li>Field</li> <li>HI 802</li> <li>Sport shall</li> <li>Gym</li> </ul>	DF DT SEND SMU / TA AAH External DC JDA SMT	French	English
<b>THURSDAY</b>	<ul style="list-style-type: none"> <li>GCSE Art catch up Yr10</li> <li>Drama GCSE</li> <li>Craft club</li> <li>Homework Club</li> <li>Trampolineing</li> <li>Chess Club</li> <li>Algebra Level 3 Club (invitation only)</li> </ul>	<ul style="list-style-type: none"> <li>601</li> <li>Lecture Theatre</li> <li>202</li> <li>606</li> <li>Gym</li> <li>Library</li> <li>407</li> </ul>	NPR DT CRI MYA JDA/GEA DHA MAS	Geography History	Maths
<b>FRIDAY</b>	Yr10 catch up performing arts WK A Yr 10 catch up NCFE H&F WK A			NCFE H&F NCFE F&C Art	BTEC Music EDUCAS PA BTEC IT Art

# Homework Calendar

	Monday	Tuesday	Wednesday	Thursday	Friday
Year 7	Maths	Science	French 7W/7O/7M	French 7N	English
					French 7E/7S
Year 8	Science	French		English	Maths
Year 9	French		English	Maths	Science
Year 10	Option Block A	English	Maths	Science	Option Block C
	Option Block D				Option Block B
Year 11	English	Maths	Science	Option Block C	Option Block A
				Option Block D	Option Block B

# Period 6 Timetable (Y11)

	Week A (HODs Meeting)	Week B
Monday	Algebra III & German	Science
Tuesday	CPD	
Wednesday	French	English
Thursday	Geography & History	Maths
Friday	VTC (Art, PE, Food)	VTC (Art, PA, IT, Music)

# School calendar 2023/24



Newsome Academy

2023					2024						
August	September	October	November	December	January	February	March	April	May	June	July
1 Tu	1 Fr	1 Su	1 We	1 Fr	1 Mo <small>New Year's Day</small>	1 Th	1 Fr	1 Mo <small>Easter Monday</small>	1 We	1 Sa	1 Mo
2 We	2 Sa	2 Mo	2 Th	2 Sa	2 Tu	2 Fr	2 Sa	2 Tu	2 Th	2 Su	2 Tu
3 Th	3 Su	3 Tu	3 Fr	3 Su	3 We	3 Sa	3 Su	3 We	3 Fr	3 Mo	3 We
4 Fr	4 Mo	4 We	4 Sa	4 Mo	4 Th	4 Su	4 Mo	4 Th	4 Sa	4 Tu	4 Th
5 Sa	5 Tu	5 Th	5 Su	5 Tu	5 Fr	5 Mo	5 Tu	5 Fr	5 Su	5 We	5 Fr
6 Su	6 We	6 Fr	6 Mo	6 We	6 Sa	6 Tu	6 We	6 Sa	6 Mo <small>Early May Bk. Hol.</small>	6 Th	6 Sa
7 Mo	7 Th	7 Sa	7 Tu	7 Th	7 Su	7 We	7 Th	7 Su	7 Tu	7 Fr	7 Su
8 Tu	8 Fr	8 Su	8 We	8 Fr	8 Mo	8 Th	8 Fr	8 Mo	8 We	8 Sa	8 Mo
9 We	9 Sa	9 Mo	9 Th	9 Sa	9 Tu	9 Fr	9 Sa	9 Tu	9 Th	9 Su	9 Tu
10 Th	10 Su	10 Tu	10 Fr	10 Su	10 We	10 Sa	10 Su	10 We	10 Fr	10 Mo	10 We
11 Fr	11 Mo	11 We	11 Sa	11 Mo	11 Tu	11 Fr	11 Sa	11 Tu	11 Th	11 Tu	11 Th
12 Sa	12 Tu	12 Th	12 Su	12 Tu	12 We	12 Sa	12 Su	12 Fr	12 Su	12 We	12 Fr
13 Su	13 We	13 Fr	13 Mo	13 We	13 Th	13 Su	13 Tu	13 Sa	13 Mo <small>GCSEs</small>	13 Th	13 Sa
14 Mo	14 Th	14 Sa	14 Tu	14 Th	14 We	14 Su	14 Tu	14 Sa	14 Tu	14 Fr	14 Su
15 Tu	15 Fr	15 Su	15 We	15 Fr	15 Th	15 Su	15 Tu	15 Sa	15 Mo	15 We	15 Sa
16 We	16 Sa	16 Mo	16 Th	16 Sa	16 Tu	16 Fr	16 Sa	16 Tu	16 Th	16 Su	16 Tu
17 Th	17 Su	17 Tu	17 Fr	17 Su	17 We	17 Sa	17 Su	17 We	17 Fr	17 Mo	17 We
18 Fr	18 Mo	18 We	18 Sa	18 Mo	18 Th	18 Su	18 Mo	18 Th	18 Sa	18 Tu	18 Th
19 Sa	19 Tu	19 Th	19 Su	19 Tu	19 Fr	19 Mo	19 Tu	19 Fr	19 Su	19 We	19 Fr
20 Su	20 We	20 Fr	20 Mo	20 We	20 Sa	20 Tu	20 We	20 Sa	20 Mo	20 Th	20 Sa
21 Mo	21 Th	21 Sa	21 Tu	21 Th	21 Su	21 We	21 Th	21 Su	21 Tu	21 Fr	21 Su
22 Tu	22 Fr	22 Su	22 We	22 Fr	22 Mo	22 Th	22 Fr	22 Mo	22 We	22 Sa	22 Mo
23 We	23 Sa	23 Mo	23 Th	23 Sa	23 Tu	23 Fr	23 Sa	23 Tu	23 Th	23 Su	23 Tu
24 Th	24 Su	24 Tu	24 Fr	24 Su	24 We	24 Sa	24 Su	24 We	24 Fr	24 Mo	24 We
25 Fr	25 Mo	25 We	25 Sa	25 Mo	25 Th	25 Su	25 Mo	25 Th	25 Sa	25 Tu	25 Th
26 Sa	26 Tu	26 Th	26 Su	26 Tu	26 Fr	26 Mo	26 Tu	26 Fr	26 Su	26 We	26 Fr
27 Su	27 We	27 Fr	27 Mo	27 We	27 Sa	27 Tu	27 We	27 Sa	27 Mo	27 Th	27 Sa
28 Mo	28 Th	28 Sa	28 Tu	28 Th	28 Su	28 We	28 Th	28 Su	28 Tu	28 Fr	28 Su
29 Tu	29 Fr	29 Su	29 We	29 Fr	29 Mo	29 Th	29 Fr	29 Mo	29 We	29 Sa	29 Mo
30 We	30 Sa	30 Mo	30 Th	30 Sa	30 Tu	30 We	30 Sa	30 Tu	30 Th	30 Su	30 Tu
31 Th	31 Su	31 Tu		31 Su	31 We		31 Su		31 Fr		31 We

WE ARE HERE

5

weeks until Half-Term Break.

make every day count.



# Newsome Academy

# WEEK AT A GLANCE

## THIS WEEK'S DIARY OF AMAZINGNESS!

[23/24 CALENDAR](#) | [SCHOOL CLUBS](#) | [LETTERS HOME](#)

<b>Monday</b>	<ul style="list-style-type: none"> <li>• The usual warm welcome by our staff</li> <li>• Health &amp; Fitness Drop-Down (Year 11)</li> </ul>
<b>Tuesday</b>	<ul style="list-style-type: none"> <li>• Health &amp; Fitness Drop-Down (Year 11)</li> </ul>
<b>Wednesday</b>	<ul style="list-style-type: none"> <li>• Health &amp; Fitness Drop-Down (Year 11)</li> </ul>
<b>Thursday</b>	<ul style="list-style-type: none"> <li>• Health &amp; Fitness Drop-Down (Year 11)</li> </ul>
<b>Friday</b>	<ul style="list-style-type: none"> <li>• Health &amp; Fitness Drop-Down (Year 11)</li> </ul>

# TOUCH BASE



## ATTENDANCE MATTERS



Y7	Y8	Y9	Y10	Y11	Services	Safeguarding
Ms Crossland	Ms Fletcher	Ms Sykes	Ms Parsonage	Ms Hallworth Ms Carter	Ms Gaye Mr Holmes Ms Hill Ms Carr	Ms Robinson Ms Wood Ms LeRoy Ms Brook



# LETTERS HOME

HEARTS & MINDS CONNECTING

## HOMEWORK

Families have asked about our homework policy. I remind everyone that ALL students have work to do in abundance! KS3 students are to complete their Knowledge Organisers ([click here](#)) and KS4 students are to follow their revision Guides that we buy for them (few schools do this!). If you have any questions – please get in touch with your child's Head of Year.

## MOBILE PHONES

- Some students (and families) are confused with our policy on mobile phones.
- Mobile phones are not to be used at any time unless with the consent and supervision of an adult in school.
- Should families not support our policy, it will contradict Academy Policy.



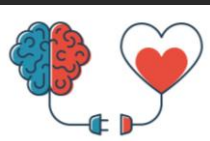
A HUGE thankyou to those families who engaged in our recent Ofsted inspection. The report will be published in a couple of weeks.

Our students did up proud and we look forward to sharing the outcome with our families very soon.



Newsome  
Academy

POST



# Hearts & Minds Student Voice Box

**We've had a break so there's  
nothing in our box yet!**

*Remember to post any feedback in our Post Box so we can further improve  
your experience!*

*The Student Leadership Team will use this in their regular meetings.*



# Agenda

SEMINAR

*Today we will  
have reminders of  
**British Values***

## SKILLS TO DEVELOP LEARNING



MEMORY



META



COLLABORATIVE



LITERACY



NUMERACY



PROFESSIONAL

TEAMWORK

ASPIRATION

RESILIENCE

TOLERANCE

## Metacognition

Metacognition is the process of thinking about one's own thinking and learning.

Metacognition: intentional thinking about how you think and learn.

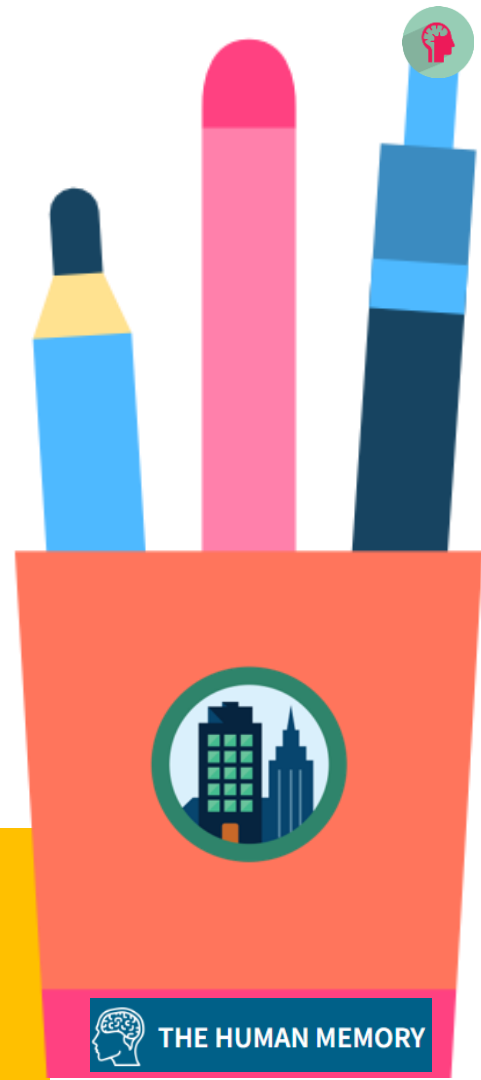


# FUNDAMENTAL BRITISH VALUES AT NEWSOME ACADEMY...

**The Department for Education states that there is a need:**

- “To create and enforce a clear and rigorous expectation on all schools to promote the fundamental British values of democracy, the rule of law, individual liberty and mutual respect and tolerance of those with different faiths and beliefs”.

*In this Term, we are going to go through each important value and responsibility we all have in being a British Citizen.*

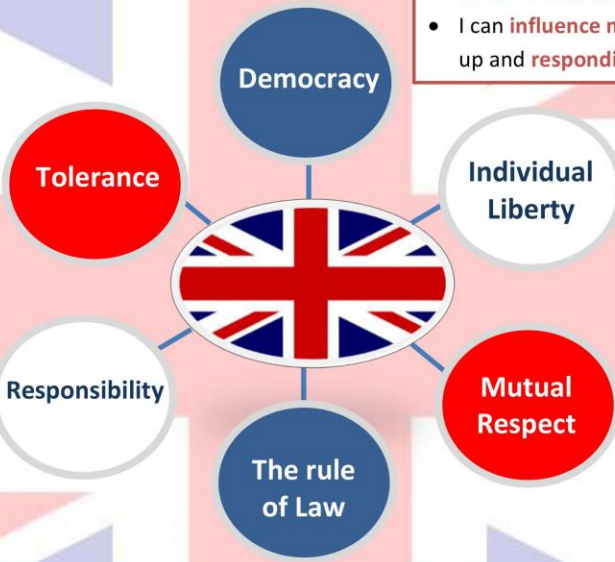


# Core British Values



- I recognise that it is **unacceptable** to dismiss the **beliefs** and **opinions** of anyone.
- I understand that discussions about **sensitive issues** will be **controlled** and **structured**.

- I recognise that I am as **equally responsible** for my learning as the teacher.
- I take **responsibility** for all my **actions** – good or bad.
- We **all** have a **responsibility** to **promote** and **protect** the wellbeing of others.



- I can **Influence** the way the school runs through the **student leadership team** and by **talking to staff**.
- I can **influence my lessons** through putting my hand up and **responding**.

- I am **free to think** as I see fit.
- I have the freedom **to make choices** that affect me but I **recognise** I am **accountable** for **all my actions**.

- I recognise **that everyone is entitled** to their **opinion** as long as it **does not promote extremism or cause offence**.
- I understand that everyone is **entitled to a voice** within the learning environment / classroom.
- I will **listen to others** as I would like to be listened to.

- I understand that the school **rules** are used to mirror **society 's laws** and must be respected.
- I recognise that there will be **consequences** for **my actions**.



**Social – Moral – Spiritual – Cultural**

**British Values**  **Shared Values**  **Our Values**



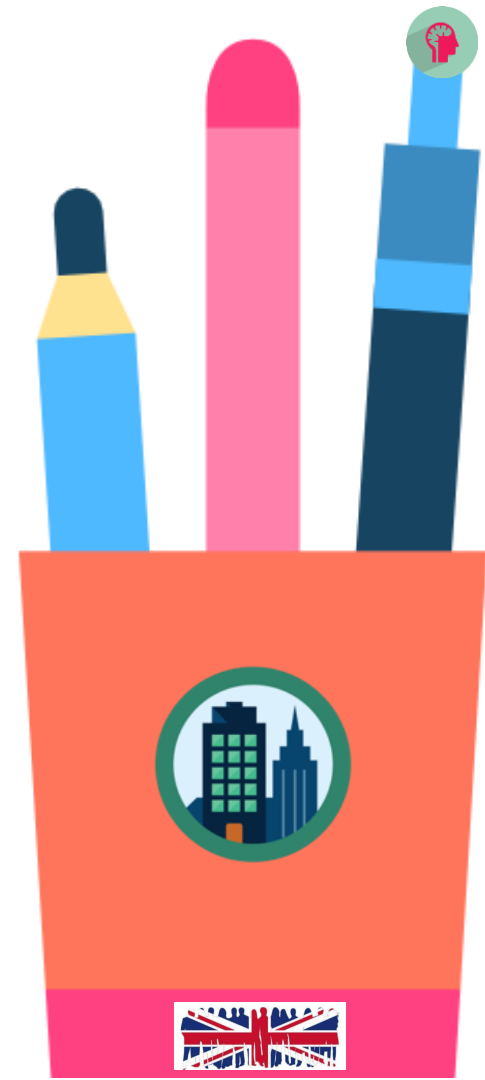


# DEMOCRACY

- I can **influence** the way the school runs through the **student leadership team** and by **talking to staff**.
- I can **influence my lessons** through putting my hand up and **responding**.

## Influence

- **Having an input into the running of the Academy Community.**
- Influence is a VERY important skill – it means you are a person of change. It is important that you understand those who influence **positive** change or **negative** change. It's important to understand those that may negatively influence your learning.
- Those who just complain and do nothing to input into making positive change are not upholding and are simply 'moaners'.



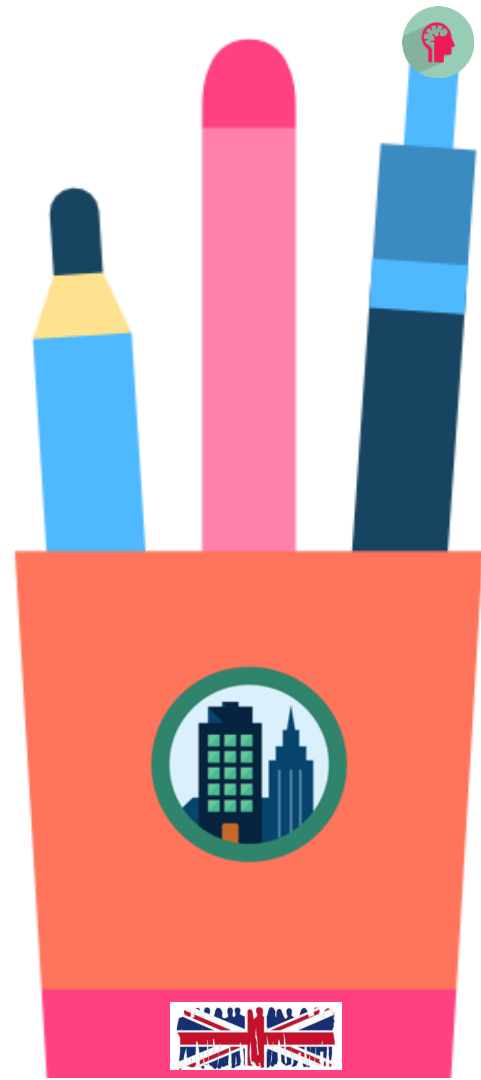


# DEMOCRACY

Influencing whole-school things...

**You can positively influence the way our Academy runs by:**

- Adhering to our RITA values.
- Understand our School Community (family). How we walk, talk and are aware/mindful/caring of others.
- Speaking to the Student Leadership Team.
- Talking/behaving respectfully to staff.
- Being actively involved in clubs, activities and how you conduct yourself.



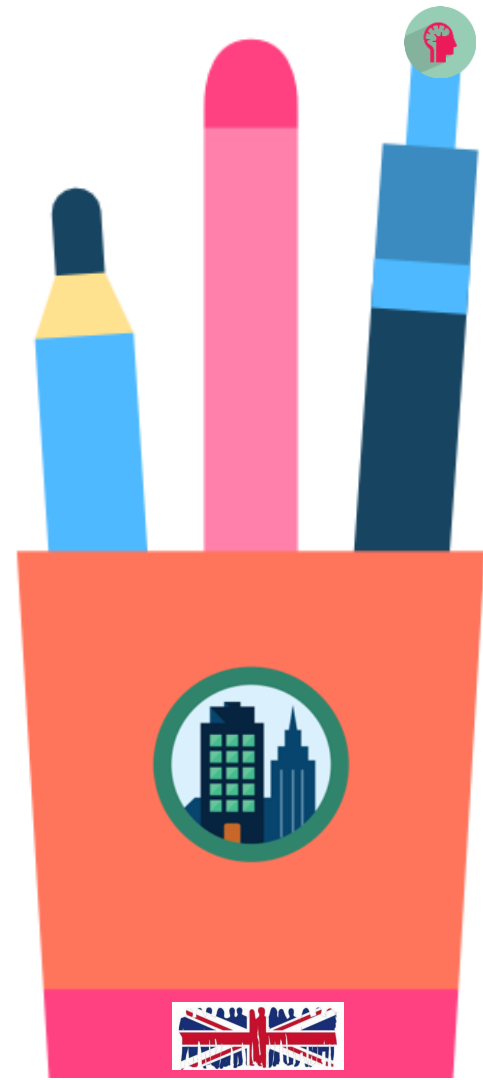


# DEMOCRACY

Influencing your learning...

**You can positively influence your life chances & learning by:**

- Adhering to our RITA values
- Understand & value the importance of education
- Answering questions in class
- Completing work to the best of your ability
- Attending after-school clubs/Activities
- Having a positive mindset
- Wanting to be the very best (being aspirational)!



# Attendance Rewards



## ATTENDANCE MATTERS

6 days or less  
absence per year  
**97% or above**  
**VERY GOOD  
THIS IS YOUR  
TARGET**

Between  
7 and 19 days  
absence per year  
**90% - 96%**  
**BELOW  
EXPECTATIONS**

More  
than 19 days  
absence per year  
**Under 90%**  
**POOR  
ATTENDANCE**

### HERE ARE THIS WEEK'S WINNERS...

<b>YEAR 7</b>	<b>EBU 93.27%</b>
<b>YEAR 8</b>	<b>SJO 96.55%</b>
<b>YEAR 9</b>	<b>GEA 96.59%</b>
<b>YEAR 10</b>	<b>BOA 95.97%</b>
<b>YEAR 11</b>	<b>KHO 91.00%</b>
<b>OVERALL</b>	<b>Year 8 92.35%</b>



**JUMP  
INTO  
JANUARY**



## To be shared in Seminar!



*Have a great week!*