

Headteacher

BREAKFAST BRIEFING

KEY MESSAGES | CURRENT AFFAIRS | CONTEXTUALISED READING

HALF-TERM 4 WEEK 4 (B)
W/C 11th FEBRUARY 2024

Useful Links

Remember to also go through your Head of Year if you need anything...

Term Calendar

An overview of the school year (subject to some changes (assessment periods))



Our Twitter (X) is our key info sharing platform. All families should be using this.

Letters Home

All the letters sent to our families. Please also add us on Twitter (X).

Our Trust Our Family



Our spirit of excellence work collaboratively to create a trust Where Hearts & Minds Connect with value-driven partners to ensure education impacts positively on students, staff and communities we serve

WEEKLY INFORMATION FOR STUDENTS & FAMILIES

EXTRA-CURRICULAR ACTIVITIES: SPRING TERM 23/24 (3PM-4PM)



ACTIVITIES

Day	Club	Location	Staff Lead	YR11 P6 WK A	YR 11 P6 W B
MONDAY	<ul style="list-style-type: none"> Netball Y7 – Y10 KS3 Football Homework Club – All years TLC time KS3 Girls scooters (12.30-1.00) Cooking Club 	<ul style="list-style-type: none"> Sports Hall/ Astro Field 606 TLC Sports Hall 602 	<ul style="list-style-type: none"> CPA/MHO GEA/BO MYA SEND LST DF 	<ul style="list-style-type: none"> Algebra III German 	<ul style="list-style-type: none"> Science
TUESDAY	<ul style="list-style-type: none"> Wheelchair Basketball Club (invitation only) 	<ul style="list-style-type: none"> Sports Hall 	<ul style="list-style-type: none"> LST / SCU 		
WEDNESDAY	Homework Club <ul style="list-style-type: none"> Drama Club TLC time EAL / culture club Programming Club Girls Football British Sign Language Art Club 	<ul style="list-style-type: none"> 606 Lecture Theatre TLC EAL / 408 608 Field HI 802 609 	<ul style="list-style-type: none"> DF DT SEND SMU / TA AAH External DS LS 	<ul style="list-style-type: none"> French 	<ul style="list-style-type: none"> English
THURSDAY	GCSE Art catch up Yr10 <ul style="list-style-type: none"> Drama GCSE Homework Club KS4 Football Chess Club Fitness 	<ul style="list-style-type: none"> 601 Lecture Theatre 606 Field Library Fitness suite 	<ul style="list-style-type: none"> NPR DT MYA JDA/DH DHA JDA 	<ul style="list-style-type: none"> Geography History 	<ul style="list-style-type: none"> Maths
FRIDAY	Yr10 catch up performing arts WK A <ul style="list-style-type: none"> Yr 10 catch up NCFE H&F WK A Basketball 	<ul style="list-style-type: none"> 606 Sportshall 		<ul style="list-style-type: none"> NCFE H&F NCFE F&C Art 	<ul style="list-style-type: none"> BTEC Music EDUCAS PA BTEC IT Art

Homework Calendar

	Monday	Tuesday	Wednesday	Thursday	Friday
Year 7	Maths	Science	French 7W/7O/7M	French 7N	English
					French 7E/7S
Year 8	Science	French		English	Maths
Year 9	French		English	Maths	Science
Year 10	Option Block A	English	Maths	Science	Option Block C
	Option Block D				Option Block B
Year 11	English	Maths	Science	Option Block C	Option Block A
				Option Block D	Option Block B

Period 6 Timetable (Y11)

	Week A (HODs Meeting)	Week B
Monday	Algebra III & German	Science
Tuesday	CPD	
Wednesday	French	English
Thursday	Geography & History	Maths
Friday	VTC (Art, PE, Food)	VTC (Art, PA, IT, Music)

School calendar 2023/24



Newsome Academy

2023					2024						
August	September	October	November	December	January	February	March	April	May	June	July
1 Tu	1 Fr	1 Su	1 We	1 Fr	1 Mo <small>New Year's Day</small>	1 Th	1 Fr	1 Mo <small>Easter Monday</small>	1 We	1 Sa	1 Mo
2 We	2 Sa	2 Mo	2 Th	2 Sa	2 Tu	2 Fr	2 Sa	2 Tu	2 Th	2 Su	2 Tu
3 Th	3 Su	3 Tu	3 Fr	3 Su	3 We	3 Sa	3 Su	3 We	3 Fr	3 Mo	3 We
4 Fr	4 Mo	4 We	4 Sa	4 Mo	4 Th	4 Mo	4 Th	4 Mo	4 Th	4 Sa	4 Th
5 Sa	5 Tu	5 Th	5 Su	5 Tu	5 Fr	5 Tu	5 Tu	5 Fr	5 Su	5 We	5 Fr
6 Su	6 We	6 Fr	6 Mo	6 We	6 Sa	6 We	6 We	6 Sa	6 Mo <small>Early May Bk. Hol.</small>	6 Th	6 Sa
7 Mo	7 Th	7 Sa	7 Tu	7 Th	7 Su	7 Th	7 Th	7 Su	7 Tu	7 Fr	7 Su
8 Tu	8 Fr	8 Su	8 We	8 Fr	8 Mo	8 Fr	8 Fr	8 Mo	8 We	8 Sa	8 Mo
9 We	9 Sa	9 Mo	9 Th	9 Sa	9 Tu	9 Tu	9 Sa	9 Tu	9 Th	9 Su	9 Tu
10 Th	10 Su	10 Tu	10 Fr	10 Su	10 We	10 Sa	10 Su	10 We	10 Fr	10 Mo	10 We
11 Fr	11 Mo	11 We	11 Sa	11 Mo	11 Th	11 Su	11 Mo	11 Th	11 Sa	11 Tu	11 Th
12 Sa	12 Tu	12 Th	12 Su	12 Tu	12 Fr	12 Mo	12 Tu	12 Fr	12 Su	12 We	12 Fr
13 Su	13 We	13 Fr	13 Mo	13 We	13 Sa	13 Tu	13 We	13 Sa	13 Mo <small>GCSEs</small>	13 Th	13 Sa
14 Mo	14 Th	14 Sa	14 Tu	14 Th	14 Su	14 We	14 Th	14 Su	14 Tu	14 Fr	14 Su
15 Tu	15 Fr	15 Su	15 We	15 Fr	15 Mo	15 Th	15 Fr	15 Mo	15 We	15 Sa	15 Mo
16 We	16 Sa	16 Mo	16 Th	16 Sa	16 Tu	16 Fr	16 Sa	16 Tu	16 Th	16 Su	16 Tu
17 Th	17 Su	17 Tu	17 Fr	17 Su	17 We	17 Sa	17 Su	17 We	17 Fr	17 Mo	17 We
18 Fr	18 Mo	18 We	18 Sa	18 Mo	18 Th	18 Su	18 Mo	18 Th	18 Sa	18 Tu	18 Th
19 Sa	19 Tu	19 Th	19 Su	19 Tu	19 Fr	19 Mo	19 Tu	19 Fr	19 Su	19 We	19 Fr
20 Su	20 We	20 Fr	20 Mo	20 We	20 Sa	20 Tu	20 We	20 Sa	20 Mo	20 Th	20 Sa
21 Mo	21 Th	21 Sa	21 Tu	21 Th	21 Su	21 We	21 Th	21 Su	21 Tu	21 Fr	21 Su
22 Tu	22 Fr	22 Su	22 We	22 Fr	22 Mo	22 Th	22 Fr	22 Mo	22 We	22 Sa	22 Mo
23 We	23 Sa	23 Mo	23 Th	23 Sa	23 Tu	23 Fr	23 Sa	23 Tu	23 Th	23 Su	23 Tu
24 Th	24 Su	24 Tu	24 Fr	24 Su	24 We	24 Sa	24 Su	24 We	24 Fr	24 Mo	24 We
25 Fr	25 Mo	25 We	25 Sa	25 Mo	25 Th	25 Su	25 Mo	25 Th	25 Sa	25 Tu	25 Th
26 Sa	26 Tu	26 Th	26 Su	26 Tu	26 Fr	26 Mo	26 Tu	26 Fr	26 Su	26 We	26 Fr
27 Su	27 We	27 Fr	27 Mo	27 We	27 Sa	27 Tu	27 We	27 Sa	27 Mo	27 Th	27 Sa
28 Mo	28 Th	28 Sa	28 Tu	28 Th	28 Su	28 We	28 Th	28 Su	28 Tu	28 Fr	28 Su
29 Tu	29 Fr	29 Su	29 We	29 Fr	29 Mo	29 Th	29 Fr	29 Mo	29 We	29 Sa	29 Mo
30 We	30 Sa	30 Mo	30 Th	30 Sa	30 Tu	30 Fr	30 Sa	30 Tu	30 Th	30 Su	30 Tu
31 Th	31 Tu	31 Tu	31 Tu	31 Su	31 We	31 We	31 Su	31 Fr	31 Fr	31 Fr	31 We



2

weeks until Half-Term Break.

make every day count.



Newsome Academy

WEEK AT A GLANCE

THIS WEEK'S DIARY OF AMAZINGNESS!

[23/24 CALENDAR](#) | [SCHOOL CLUBS](#) | [LETTERS HOME](#)

Monday	<ul style="list-style-type: none"> The usual warm welcome by our staff THE BIG SING – ECO 12.30pm - 6.30pm
Tuesday	<ul style="list-style-type: none"> Year 10 parents' evening Social Media and sleep workshop for parents 9.30am- 10.30am – J Brook
Wednesday	
Thursday	
Friday	<ul style="list-style-type: none"> Comic Relief (Non Uniform – bring £1)

TOUCH BASE



Please ensure that there is clear understanding on the range of work that students should be working on at home.

Please ensure you are fully aware of:

- Knowledge Organisers** (KS3)
- Study Support Packs** (all years)
- GCSE Revision Guides** (bought for Y11 students)

ATTENDANCE MATTERS



Y7	Y8	Y9	Y10	Y11	Services	Safeguarding
Ms Crossland	Ms Fletcher	Ms Sykes	Ms Parsonage	Ms Hallworth Ms Carter	Ms Gaye Mr Holmes Ms Hill Ms Carr	Ms Robinson Ms Wood Ms LeRoy Ms Brook



**Newsome
Academy**



trending



NEWSOME ACADEMY

MON 4TH - FRI 8TH

LITERATURE FESTIVAL

NEWSOME ACADEMY LIT FEST

GUEST SPEAKERS

POETRY COMPETITION

WORKSHOPS



Newsome Academy



LETTERS HOME

HEARTS & MINDS CONNECTING

MOBILE PHONES

- Some students (and families) are confused with our policy on mobile phones.
- Mobile phones are not to be used at any time unless with the consent and supervision of an adult in school.
- Should families not support our policy, it will contradict Academy Policy.



OFSTED INSPECTION ANNOUCEMENT

UPDATE TO OUR LOVELY FAMILIES

(AND FOR LOCAL PRESS THAT WANTS TO SHARE 'GOOD' PUBLICITY!)

- Our recent Ofsted Inspection report has been finalised. [Click here](#) to see it.
- If you haven't already, please see our Ofsted letter to families [here](#).



Please ensure that there is clear understanding on the range of work that students should be working on at home. Please ensure you are fully aware of the information in the Study Support Pack ([click here](#)). This will give you all the information you need for the work your child completes at home.

Knowledge Organisers (KS3)

Study Support Packs (all years)

GCSE Revision Guides
(bought for Y11 students)



Hearts & Minds Voice Box

Respecting our Environment

We are lucky enough to have a wonderful school that looks amazing and admired by many. Please respect this by ensuring you are clearing up after yourself during social times.

Corridor Safety Routines

Students have mentioned the importance of understanding how we move around the building whilst respecting wheelchair users.

Remember to post any feedback in our Post Box so we can further improve your experience!

The Student Leadership Team will use this in their regular meetings.

Agenda

SEMINAR

Today we will
cover
Individual Liberty

SKILLS TO DEVELOP LEARNING



MEMORY



META



COLLABORATIVE



LITERACY



NUMERACY



PROFESSIONAL

TEAMWORK

ASPIRATION

RESILIENCE

TOLERANCE

Metacognition

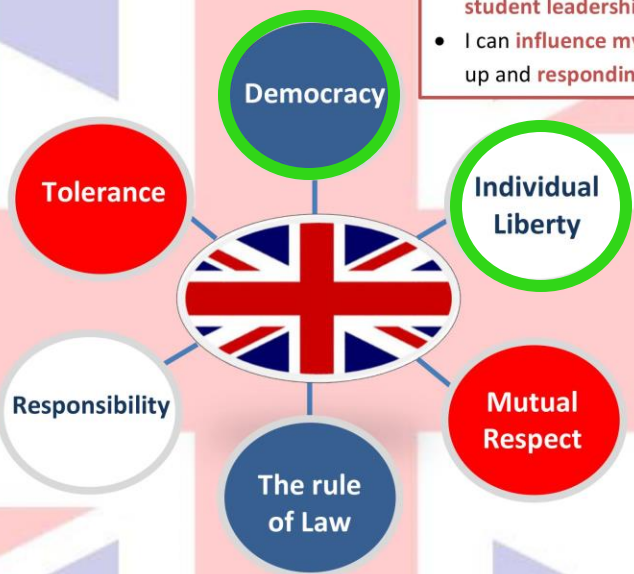
Metacognition is the process of thinking about one's own thinking and learning.

Metacognition: intentional thinking about how you think and learn.

Core British Values



- I recognise that it is **unacceptable** to dismiss the **beliefs** and **opinions** of anyone.
- I understand that discussions about **sensitive issues** will be **controlled** and **structured**.



- I can **Influence** the way the school runs through the **student leadership team** and by **talking to staff**.
- I can **influence my lessons** through putting my hand up and **responding**.

- I am **free to think** as I see fit.
- I have the freedom **to make choices** that affect me but I **recognise** I am **accountable** for **all my actions**.

- I recognise that I am as **equally responsible** for my learning as the teacher.
- I take **responsibility** for all my **actions** – good or bad.
- We **all** have a **responsibility** to **promote** and **protect** the wellbeing of others.

- I recognise **that everyone is entitled** to their **opinion** as long as it **does not promote extremism or cause offence**.
- I understand that everyone is **entitled to a voice** within the learning environment / classroom.
- I will **listen to others** as I would like to be listened to.

- I understand that the school **rules** are used to mirror **society's laws** and must be respected.
- I recognise that there will be **consequences** for **my actions**.

Social – Moral – Spiritual – Cultural

British Values **Shared Values** **Our Values**



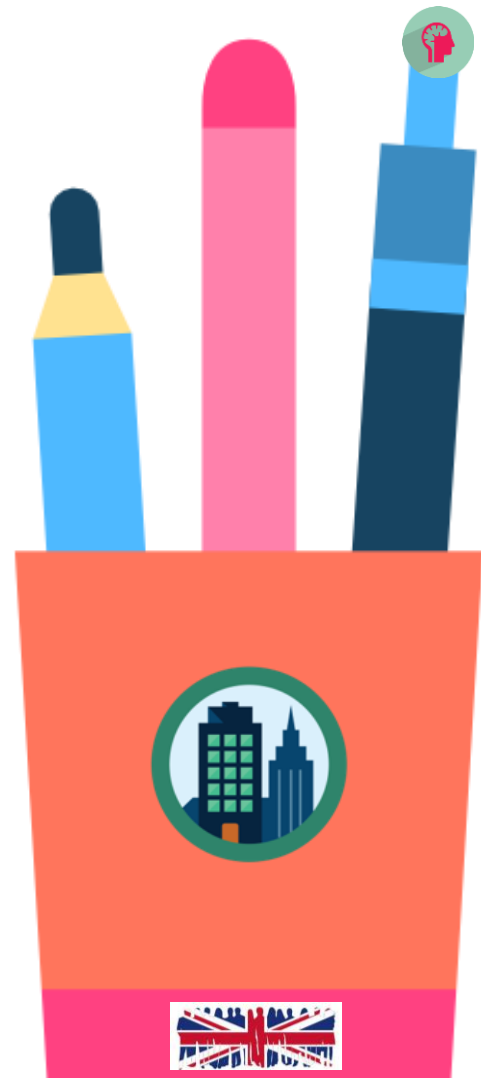


INDIVIDUAL LIBERTY

- I am **free to think** as I see fit.
- I have the freedom **to make choices** that affect me but I **recognise** I am **accountable** for **all my actions**.

Influence

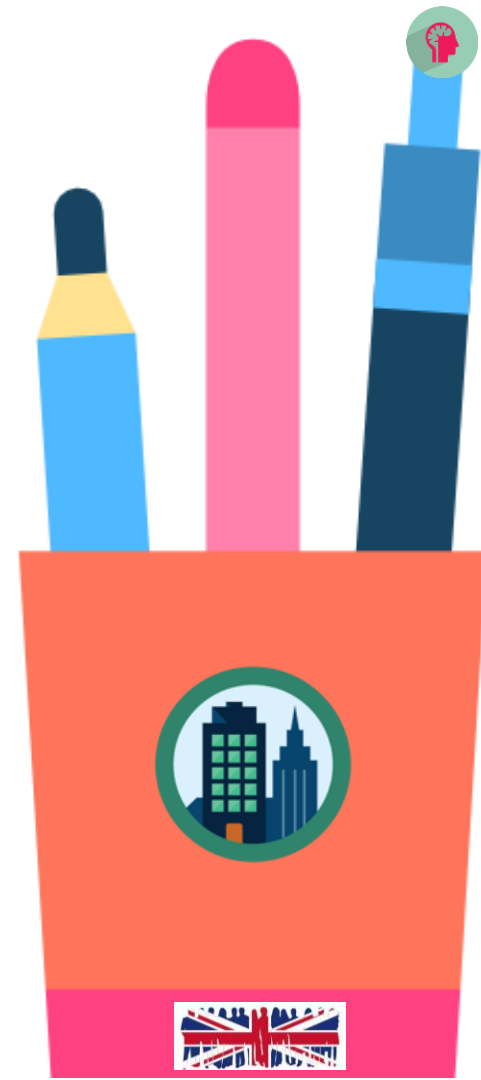
- **Having an input into the running of the Academy Community.**
- Influence is a VERY important skill – it means you are a person of change. It is important that you understand those who influence **positive** change or **negative** change. It's important to understand those that may negatively influence your learning.
- Those who just complain and do nothing to input into making positive change are not upholding and are simply 'moaners'.





INDIVIDUAL LIBERTY

- Individual liberty means each of us having the freedom to make our own choices and do what we want – within reason. As long as we respect the other three British values and the rights of others, then we are free to pursue our ambitions, and follow our own will.





INDIVIDUAL LIBERTY

- At Newsome, we are actively encouraged to make choices for ourselves, knowing that we are in a safe and supportive environment. We can make choices because at Newsome we have a safe environment in which we are part of, where it is safe to make mistakes.
- Our PSHE lessons help us to have conversations about our individual liberties and how to exercise these safely

Key Vocabulary	Definition
will	Determination to do what is necessary to achieve ambitions
ambitions	A strong desire to do or achieve something
freedom	The power or right to act, speak, or think as one wants
liberty	The power to make your own choices about your behaviour





[Click here](#) to see a short video on Individual Liberty to get you thinking and understanding of what this important aspect of British Citizenship is.

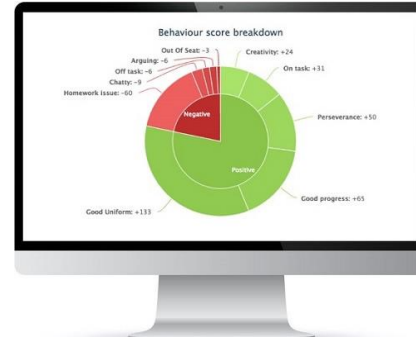


INDIVIDUAL LIBERTY

Key Vocabulary	Definition
will	Determination to do what is necessary to achieve ambitions
ambitions	A strong desire to do or achieve something
freedom	The power or right to act, speak, or think as one wants
liberty	The power to make your own choices about your behaviour

Freedom

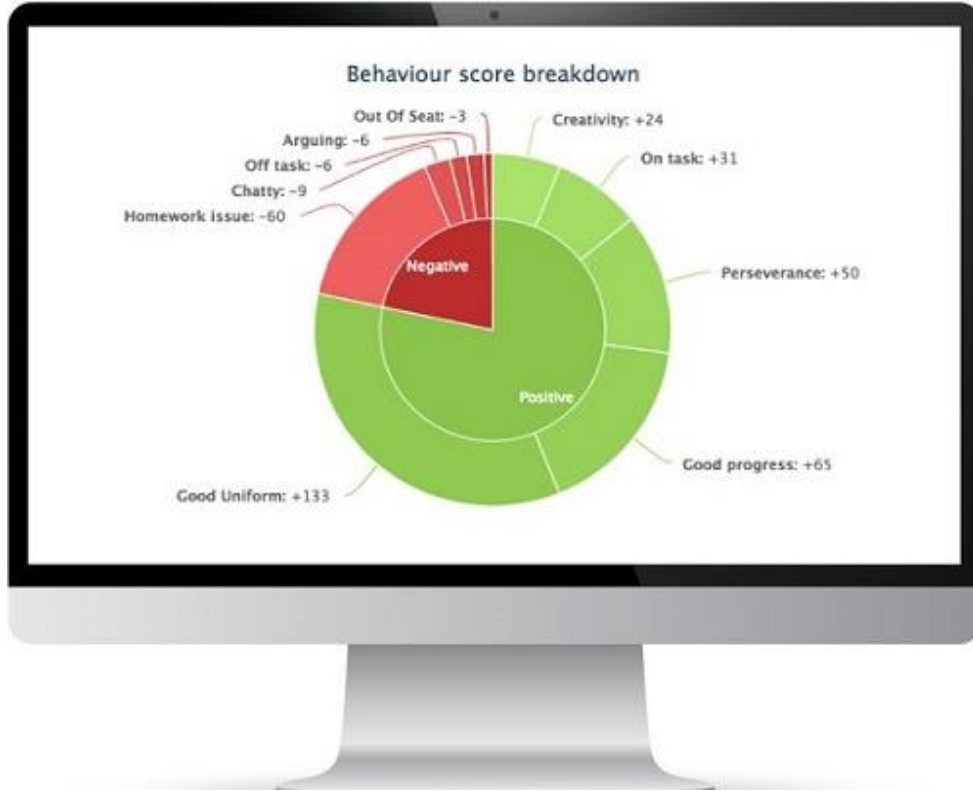
- Having a right to act must work within respectful boundaries. For example you cannot be disrespectful or be hurtful when doing this.



Liberty

- Having the power to make your own choices means you also accept the consequences or indeed celebrate the rewards! You are to use to your Class Charts as your go-to. This tell you how many things you are getting right.





Rule of Law

- Remember what we tell you about why schools have behaviour systems.
- This teaches us for rule of law and understand what behaviours are positive and negative.
- These either bring consequences or rewards. Although we reward in school – you reap the rewards in your career as people want to employ/invest in positive people

Respect

Integrity

Teamwork

Aspiration

Attendance



Weekly Honours List

*Celebrating our fabulous
students and their
achievements*

Headteacher *Respect* Award

Well done and keep up the fabulous aspiration towards education. Having students like you in our family is a pleasure to see and work with. You should be very proud of yourself and use this as a prompt to continue your drive for a successful future.

26th December 2024



Weekly Honours List

Celebrating our fabulous
students and their
achievements

Headteacher Integrity Award

Well done and keep up the fabulous aspiration towards education. Having students like you in our family is a pleasure to see and work with. You should be very proud of yourself and use this as a prompt to continue your drive for a successful future.

26th December 2024



Weekly Honours List

Celebrating our fabulous
students and their
achievements

Headteacher Teamwork Award

Well done and keep up the fabulous aspiration towards education. Having students like you in our family is a pleasure to see and work with. You should be very proud of yourself and use this as a prompt to continue your drive for a successful future.

26th December 2024



Weekly Honours List

Celebrating our fabulous
students and their
achievements

Headteacher *Aspiration* Award

Well done and keep up the fabulous aspiration towards education. Having students like you in our family is a pleasure to see and work with. You should be very proud of yourself and use this as a prompt to continue your drive for a successful future.

26th December 2024



Weekly Honours List

Celebrating our fabulous
students and their
achievements

Attendance Award

Recognising the
importance of
attending education.



Weekly Honours List

Celebrating our fabulous
students and their
achievements

Attendance

HERE ARE THIS WEEK'S WINNERS...

HERE ARE THIS WEEK'S WINNERS...	
YEAR 7	
YEAR 8	
YEAR 9	
YEAR 10	
YEAR 11	
OVERALL	



Weekly Honours List

Celebrating our fabulous
students and their
achievements

Attendance

Highest year group

Year 8 (95%)

Well done and keep up the
fabulous aspiration
towards education.

26th January 2024



Weekly Honours List

Celebrating our fabulous
students and their
achievements



Have a great week!