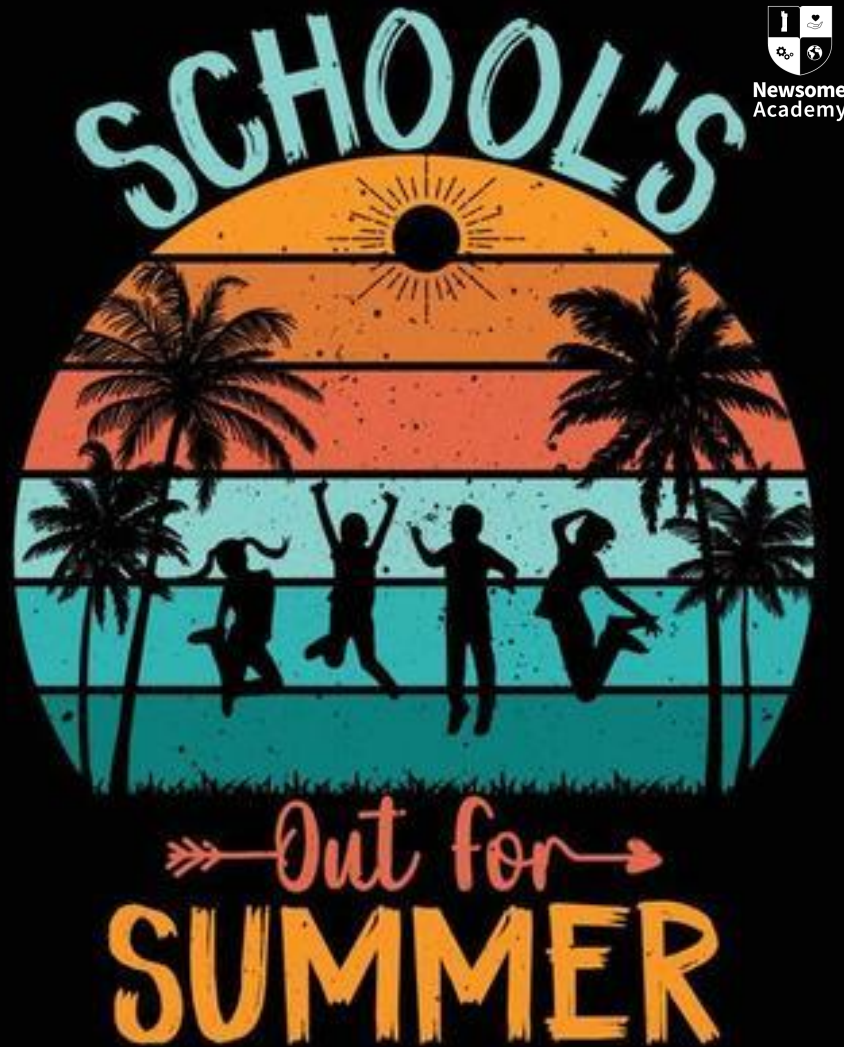


# FAMILY NEWS

## WEEKLY UPDATE



# BREAKFAST BRIEFING

- HALF-TERM5 (WEEK 3)
- WEEK STARTING 8TH JUNE 2024

## KEY FAMILY LINKS

- [TERM DATES CALENDAR](#)
- [LETTERS HOME](#)
- [HOME STUDY PACK](#)
- [KNOWLEDGE ORGANISERS \(KS3\)](#)
- [OUR X SOCIAL MEDIA ACCOUNT](#)



Newsome  
Academy

Officially rated  
'Good' with  
'Outstanding'  
features

  
Ofsted

Good  
Provider



# SOCIAL X MEDIA MOMENTS



We share daily live update to our families and staff as part of our 'above and beyond' communication strategy. See also the [letters section](#) on our website.



# ETON COLLEGE

[Click here](#) to see how our Newsome Eton Graduate is getting along!

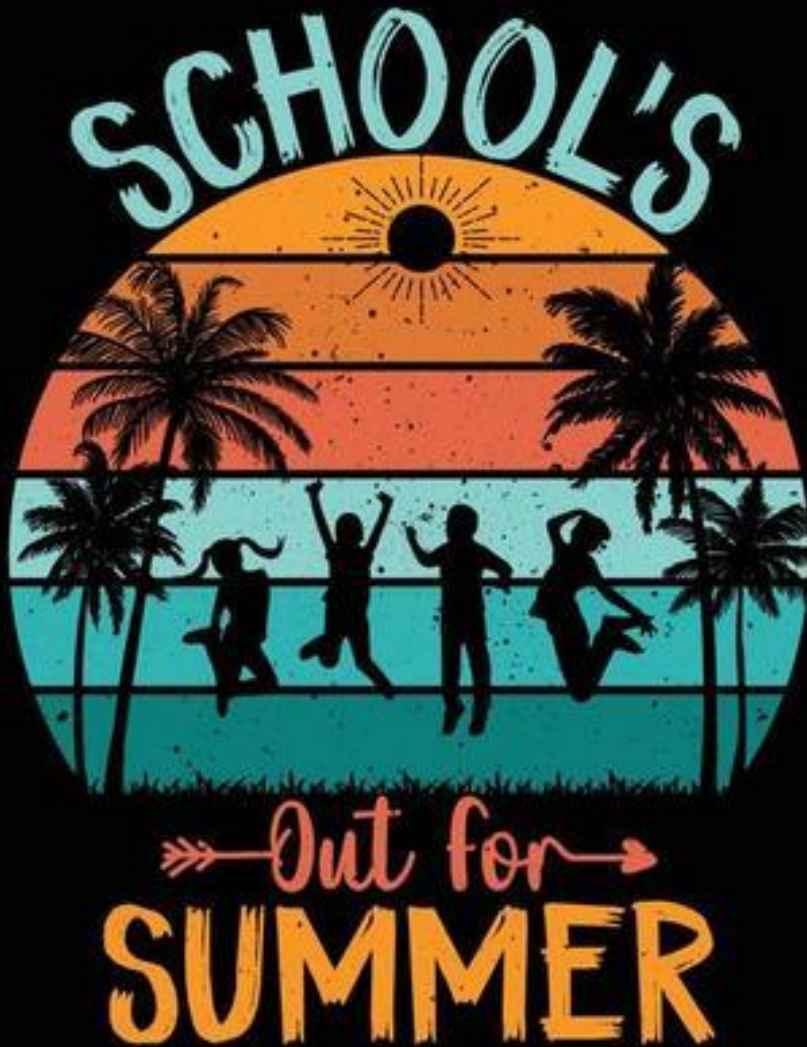


## Newsome Academy

[Click here](#) to see our new promo video - says it all!

April	May	June	July
1 Mo <small>Easter Monday</small>	1 We	1 Sa	1 Mo
2 Tu	2 Th	2 Su	2 Tu
3 We	3 Fr	3 Mo	3 We
4 Th	4 Sa	4 Tu	4 Th
5 Fr	5 Su	5 We	5 Fr
6 Sa	6 Mo <small>Early May Bk. Hol.</small>	6 Th	6 Sa
7 Su	7 Tu	7 Fr	7 Su
8 Mo	8 We	8 Sa	8 Mo
9 Tu	9 Th	9 Su	9 Tu
10 We	10 Fr	10 Mo	10 We
11 Th	11 Sa	11 Tu	11 Th
12 Fr	12 Su	12 We	12 Fr
13 Sa	13 Mo <small>GCSEs</small>	13 Th	13 Sa
14 Su	14 Tu	14 Fr	14 Su
15 Mo	15 We	15 Sa	15 Mo
16 Tu	16 Th	16 Su	16 Tu
17 We	17 Fr	17 Mo	17 We
18 Th	18 Sa	18 Tu	18 Th
19 Fr	19 Su	19 We	19 Fr
20 Sa	20 Mo	20 Th	20 Sa
21 Su	21 Tu	21 Fr	21 Su
22 Mo	22 We	22 Sa	22 Mo
23 Tu	23 Th	23 Su	23 Tu
24 We	24 Fr	24 Mo	24 We
25 Th	25 Sa	25 Tu	25 Th
26 Fr	26 Su	26 We	26 Fr
27 Sa	27 Mo <small>Spring Bk. Hol.</small>	27 Th	27 Sa
28 Su	28 Tu	28 Fr	28 Su
29 Mo	29 We	29 Sa	29 Mo
30 Tu	30 Th	30 Su	30 Tu
	31 Fr		31 We

WE  
ARE  
HERE



# LETTERS HOME







# Thank You

## END OF TERM LETTER FROM THE HEADTEACHER



As we reach the end of another academic year, I usually write about what a fantastic year of achievement it has been. This year, words can't express the gratitude, care, love and enjoyment that I and staff have for the Academy and its community. Thank you for being part of that!

After seven wonderful years of school improvement, this year we finally achieved the landmark recognition from Ofsted and are now locally and nationally known as a stand-out school of choice - all because of the wonderful work and the equally wonderful children and families that make up our own Newsome Academy family. Trust me when I (and the kids) say we are all privileged to be in our school. We have further achieved national recognition from major organisations who note the high-quality teaching and SEND provision we provide. I could proudly go on and on about the range of wonderful life-changing opportunities, but our X Account shows it all in abundance!

Our staff also need a special mention. I speak from the heart when I say these guys are a real driving force here at the Academy and work relentlessly for our children - I have been drawn to tears watching their care, effort and passion and the wonders they work daily in shaping our children. This is further supported by our passionate and supportive Governors. Impact Education Multi Academy Trust's overarching passion and work across all 10 of our family of schools further bolsters the special and successful group we form part of.

If you don't already, please join our network of over 3,000 followers to see what is happening daily. I wish all our families a wonderful summer and look forward to seeing everyone in September - I'll leave you with our brand-new promotional video which says it all.

Officially rated  
'Good' with  
'Outstanding'  
features



[CLICK HERE](#)

TO SEE OUR NEW PROMO VIDEO

# FINAL WEEK OF TERM ARRANGEMENTS

The last week of term will have a slightly different look to our usual weeks. We have several events and activities taking place for our students and with this in mind, **the full week will be non-uniform.**

- Students can attend school in appropriate non-uniform clothing for the week.
- On Sports day, this needs to be Newsome PE kit.
- On Culture Day, clothing that represents their culture.
- Students and staff are asked to make a £2 contribution which will go back into student materials and enrichment.

MONDAY 15TH JULY	<b>Normal Academy day</b>	<b>Non-Uniform Day - general</b> <ul style="list-style-type: none"> <li>• No caps/hats indoors</li> <li>• No hoods up</li> <li>• Modest clothing to be worn that is not offensive in any way.</li> </ul>
TUESDAY 16TH JULY	<b>Sports Day</b> <b>Year 7 &amp; 8 Rewards Seminar</b> ALL students to attend in Newsome PE kit P1 - 3 = Field events P4 - 5 = Track events Y9 & 10 BASE seminars <b>NEWSOME'S GOT TALENT EVENT</b>	<b>Non-Uniform Day - PE Kit</b> <ul style="list-style-type: none"> <li>• ALL students/staff to attend in Newsome PE kit</li> <li>• No caps/hats indoors</li> <li>• No hoods up</li> <li>• Modest clothing to be worn that is not offensive in any way.</li> </ul>
WEDNESDAY 17TH JULY	<b>Culture Day</b> Students to attend in clothing that represents their culture All students to follow alternative timetable	<b>Non-Uniform Day - Culture</b> <ul style="list-style-type: none"> <li>• No caps/hats indoors</li> <li>• No hoods up</li> <li>• Modest clothing to be worn that is not offensive in any way.</li> </ul>
THURSDAY 18TH JULY	<b>Normal Academy day</b> <ul style="list-style-type: none"> <li>• Year 10 Rewards Seminar</li> </ul>	<b>Non-Uniform Day - general</b> <ul style="list-style-type: none"> <li>• No caps/hats indoors</li> <li>• No hoods up</li> <li>• Modest clothing to be worn that is not offensive in any way.</li> </ul>
FRIDAY 19TH JULY	<b>Last Day</b> <ul style="list-style-type: none"> <li>• Year 9 Rewards Seminar</li> <li>• Students go to P3 lesson then brought to Sports Hall (Pastoral team to initiate movement)</li> <li>• Celebration event and key info.</li> <li>• <b>Students finish at 12.15pm</b></li> </ul>	<b>Non-Uniform Day - general</b> <ul style="list-style-type: none"> <li>• No caps/hats indoors</li> <li>• No hoods up</li> <li>• Modest clothing to be worn that is not offensive in any way.</li> </ul>

# CULTURE DAY 17TH JULY



Officially rated  
'Good' with  
'Outstanding'  
features



## Dear Families

Newsome Academy will be celebrating our Culture Day on Wednesday 17<sup>th</sup> July to honour the pride we have in our many different cultures, religions and heritages across our school family.

We will have many performances from our own students showcasing their talents and culture. We will also have many different activities throughout the day highlighting the Pride we have in our own cultures and identities.

Students may come in their own clothes, if they would like to showcase their own culture, religion, country, or even their football team then please do so.

We look forward to seeing our students show off what makes them so unique!

*Mr S. Jones*



**Newsome  
Academy**

CULTURE DAY



# CULTURE DAY - 17TH JULY



Information here

	P1	P2	P3	P4	P5
Y7	Whole School Seminar Sportshall	Workshop 2 Lecture Theatre	Workshop 1 Sportshall	Mandalas & Meditation Classrooms	Cultural Fashion Classrooms
Y8	Whole School seminar Sportshall	Workshop 1 Sportshall	Mandalas & Meditation Classrooms	Cultural Fashion Classrooms	Workshop 2 Lecture Theatre
Y9	Whole School seminar Sportshall	Cultural Fashion Classrooms	Workshop 2 Lecture Theatre	Workshop 1 Sportshall	Mandalas & Meditation Classrooms
Y10	Whole School seminar Sportshall	Mandalas & Meditation Classrooms	Cultural Fashion Classrooms	Careers Workshop Lecture Theatre	My Directions Classrooms

Officially rated  
'Good' with  
'Outstanding'  
features





**TUESDAY 16TH JULY 5.30pm - 7.30pm**

**Tickets on SALE! £2.50**  
**BUY on Parent Pay or pay at reception!**

# START OF TERM SEPTEMBER ARRANGEMENTS



**Newsome  
Academy**

Please see the arrangements for the start of term in September. As with every year, we start with training days and then a Y7 only 'Navigation Day'. We look forward to welcoming our students back after a relaxing summer break!

MONDAY 2ND SEPTEMBER	<ul style="list-style-type: none"><li>• Inset day - Staff only</li><li>• School closed for all students</li></ul>
TUESDAY 3RD SEPTEMBER	<ul style="list-style-type: none"><li>• Inset day - Staff only</li><li>• School closed for all other students</li></ul>
WEDNESDAY 4TH SEPTEMBER	<ul style="list-style-type: none"><li>• Year 7 only - 'Navigation Day'</li><li>• School closed for all other students</li></ul>
THURSDAY 5TH SEPTEMBER	<ul style="list-style-type: none"><li>• Normal school day</li><li>• Open to all students</li><li>• All years return to the Academy at normal school times</li></ul>
FRIDAY 6TH SEPTEMBER	<ul style="list-style-type: none"><li>• Normal school day</li><li>• Open to all students</li><li>• Alton Towers Reward trip</li></ul>





# PASTORAL



YEAR 7



**MS CARTER**  
PASTORAL LEAD

YEAR 8



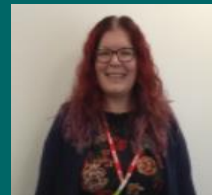
**MS CROSSLAND**  
HEAD OF YEAR 7  
ENGLISH TEAM LEADERS

YEAR 9



**MS PARSONAGE**  
HEAD OF YEAR 8  
MATHS TEAM LEADERS

YEAR 10



**MS SYKES**  
HEAD OF YEAR 10  
VTC TEAM LEADERS

YEAR 11



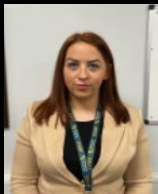
**MS HALLWORTH**  
HEAD OF YEAR 11  
SCIENCE TEAM LEADERS



**MR HOLMES**



**MS GAYE**



**MS CARR**



**MS HILL**

PASTORAL SUPPORT OFFICERS

SPEAK TO THE  
TEAM IF YOU NEED ANY  
SUPPORT.  
[talk@newsomeacademy.co.uk](mailto:talk@newsomeacademy.co.uk)



# SAFEGUARDING



MS HALL  
DSL



MS WOOD  
DEPUTY DSL  
COUNSELLOR



MS LEROY  
DEPUTY DSL



MS BROOK  
WELLBEING  
LEAD

SPEAK TO THE  
TEAM IF YOU NEED  
ANY SUPPORT.  
[talk@newsomeacademy.co.uk](mailto:talk@newsomeacademy.co.uk)

WE HAVE A  
DEDICATED TEAM  
TO HELP YOU IN  
TIMES OF NEED!