

FAMILY NEWS

WEEKLY UPDATE

WEEK 1



**Newsome
Academy**



BREKFAST BRIEFING

- HALF-TERM5 (WEEK 3)
- WEEK STARTING 8TH JUNE 2024

KEY FAMILY LINKS

- [LETTERS HOME](#)
- [HOME STUDY PACK](#)
- [KNOWLEDGE ORGANISERS \(KS3\)](#)
- [OUR X SOCIAL MEDIA ACCOUNT](#)



Newsome
Academy

Officially rated
'Good' with
'Outstanding'
features

Ofsted

Good
Provider

CALENDAR



Newsome
Academy

8 WEEKS
UNTIL
NEXT
BREAK

2024					2025						
August	September	October	November	December	January	February	March	April	May	June	July
1 Th	1 Su	2 Tu	1 Fr	1 Su	1 We <small>New Year's Day</small>	1 Sa	1 Sa	1 Tu	1 Th	1 Su	1 Tu
2 Fr	2 Mo	3 We	2 Sa	2 Mo	2 Th	2 Su	2 Su	2 We	2 Fr	2 Mo	2 We
3 Sa	3 Tu	4 Th	3 Su	3 Tu	3 Fr	3 Mo	3 Mo	3 Th	3 Sa	3 Tu	3 Th
4 Su	4 We	5 Sa	4 Mo	4 We	4 Sa	4 Tu	4 Tu	4 Fr	4 Su	4 We	4 Fr
5 Mo	5 Th	5 Sa	5 Tu	5 Th	5 Su	5 We	5 We	5 Sa	5 Mo <small>Early May Bk. Hol.</small>	5 Th	5 Sa
6 Tu	6 Fr	6 Su	6 We	6 Fr	6 Mo	6 Th	6 Th	6 Su	6 Tu	6 Fr	6 Su
7 We	7 Sa	7 Mo	7 Th	7 Sa	7 Tu	7 Fr	7 Fr	7 Mo	7 We	7 Sa	7 Mo
8 Th	8 Su	8 Tu	8 Fr	8 Su	8 We	8 Sa	8 Sa	8 Tu	8 Th	8 Su	8 Tu
9 Fr	9 Mo	9 We	9 Sa	9 Mo	9 Th	9 Su	9 Su	9 We	9 Fr	9 Mo	9 We
10 Sa	10 Tu	10 Th	10 Su	10 Tu	10 Fr	10 Mo	10 Mo	10 Th	10 Sa	10 Tu	10 Th
11 Su	11 We	11 Fr	11 Mo	11 We	11 Sa	11 Tu	11 Tu	11 Fr	11 Su	11 We	11 Fr
12 Mo	12 Th	12 Sa	12 We	12 Th	12 Su	12 We	12 We	12 Sa	12 Mo	12 Th	12 Sa
13 Tu	13 Fr	13 Su	13 We	13 Fr	13 Mo	13 Th	13 Th	13 Su	13 Tu	13 Fr	13 Su
14 We	14 Sa	14 Mo	14 Th	14 Sa	14 Tu	14 Fr	14 Fr	14 Mo	14 We	14 Sa	14 Mo
15 Th	15 Su	15 Tu	15 Fr	15 Su	15 We	15 Sa	15 Sa	15 Tu	15 Th	15 Su	15 Tu
16 Fr	16 Mo	16 We	16 Sa	16 Mo	16 Th	16 Su	16 Su	16 We	16 Fr	16 Mo	16 We
17 Sa	17 Tu	17 Th	17 Su	17 Tu	17 Fr	17 Mo	17 Mo	17 Th	17 Sa	17 Tu	17 Th
18 Su	18 We	18 Fr	18 Mo	18 We	18 Sa	18 Tu	18 Tu	18 Fr <small>Good Friday</small>	18 Su	18 We	18 Fr
19 Mo	19 Th	19 Sa	19 Tu	19 Th	19 Su	19 We	19 We	19 Sa	19 Mo	19 Th	19 Sa
20 Tu	20 Fr	20 Su	20 We	20 Fr	20 Mo	20 Th	20 Th	20 Su	20 Tu	20 Fr	20 Su
21 We	21 Sa	21 Mo	21 Th	21 Sa	21 Tu	21 Fr	21 Fr	21 Mo <small>Easter Monday</small>	21 We	21 Sa	21 Mo
22 Th	22 Su	22 Tu	22 Fr	22 Su	22 We	22 Sa	22 Sa	22 Tu	22 Th	22 Su	22 Tu
23 Fr	23 Mo	23 We	23 Sa	23 Mo	23 Th	23 Su	23 Su	23 We	23 Fr	23 Mo	23 We
24 Sa	24 Tu	24 Th	24 Su	24 Tu	24 Fr	24 Mo	24 Mo	24 Th	24 Sa	24 Tu	24 Th
25 Su	25 We	25 Fr	25 Mo	25 We	25 Sa <small>Christmas Day</small>	25 Tu	25 Tu	25 Fr	25 Su	25 We	25 Fr
26 Mo <small>August Bk. Hol.</small>	26 Th	26 Sa	26 Tu	26 Th	26 Su <small>Boxing Day</small>	26 We	26 We	26 Sa	26 Mo <small>Spring Bk. Hol.</small>	26 Th	26 Sa
27 Tu	27 Fr	27 Su	27 We	27 Fr	27 Mo	27 Th	27 Th	27 Su	27 Tu	27 Fr	27 Su
28 We	28 Sa	28 Mo	28 Th	28 Sa	28 Tu	28 Fr	28 Fr	28 Mo	28 We	28 Sa	28 Mo
29 Th	29 Su	29 Tu	29 Fr	29 Su	29 We		29 Sa	29 Tu	29 Th	29 Su	29 Tu
30 Fr	30 Mo	30 We	30 Sa	30 Mo	30 Th		30 Su	30 We	30 Fr	30 Mo	30 We
31 Sa		31 Th		31 Tu	31 Fr		31 Mo		31 Sa		31 Th


WE
ARE
HERE

START OF TERM SEPTEMBER ARRANGEMENTS



**Newsome
Academy**

Please see the arrangements for the start of term in September. As with every year, we start with training days and then a Y7 only 'Navigation Day'. We look forward to welcoming our students back after a relaxing summer break!

MONDAY 2ND SEPTEMBER	<ul style="list-style-type: none">• Inset day - Staff only• School closed for all students
TUESDAY 3RD SEPTEMBER	<ul style="list-style-type: none">• Inset day - Staff only• School closed for all other students
WEDNESDAY 4TH SEPTEMBER	<ul style="list-style-type: none">• Year 7 only - 'Navigation Day'• School closed for all other students
THURSDAY 5TH SEPTEMBER	<ul style="list-style-type: none">• Normal school day• Open to all students• All years return to the Academy at normal school times 
FRIDAY 6TH SEPTEMBER	<ul style="list-style-type: none">• Normal school day• Open to all students• Alton Towers Reward trip



PASTORAL



	YEAR 7	YEAR 8	YEAR 9	YEAR 10	YEAR 11
 MS CARTER PASTORAL LEAD	 MS CROSSLAND HEAD OF YEAR 7 ENGLISH TEAM LEADERS	 MS PARSONAGE HEAD OF YEAR 8 MATHS TEAM LEADERS	 MS FLETCHER HEAD OF YEAR 9 HUMANITIES TEAM LEADERS	 MS SYKES HEAD OF YEAR 10 VTC TEAM LEADERS	 MS HALLWORTH HEAD OF YEAR 11 SCIENCE TEAM LEADERS



MR HOLMES



MS GAYE



MS CARR



MS HILL

PASTORAL SUPPORT OFFICERS

SPEAK TO THE TEAM IF YOU NEED ANY SUPPORT.
talk@newsomeacademy.co.uk



SAFEGUARDING



MS HALL
DSL



MS WOOD
DEPUTY DSL
COUNSELLOR



MS LEROY
DEPUTY DSL



MS BROOK
WELLBEING
LEAD

**SPEAK TO THE
TEAM IF YOU NEED
ANY SUPPORT.**
talk@newsomeacademy.co.uk

**WE HAVE A
DEDICATED TEAM
TO HELP YOU IN
TIMES OF NEED!**

AT NEWSOME ACADEMY WE ALL LIVE BY OUR CORE VALUES

<p>RESPECT Recognise, understand and celebrate differences.</p>	<p>INTEGRITY Truth & honesty in all we do in and out of the Academy.</p>	<p>TEAMWORK Work together effectively and efficiently.</p>	<p>ASPIRATION Be the best that you can be.</p>
<ul style="list-style-type: none"> ▶ We treat others as we would like to be treated ▶ We appreciate each other's individuality and needs ▶ We sustain a tidy, well-kept and purposeful environment 	<ul style="list-style-type: none"> ▶ We have the morals and courage to do and say the right thing in a respectful way ▶ We are fair, sincere and honest ▶ We understand the rules and meet the expectations of our learning community 	<ul style="list-style-type: none"> ▶ We value everyone's contribution to Academy life ▶ We listen with empathy in order to understand ▶ We collaborate, share, encourage and develop ideas to make us stronger. 	<ul style="list-style-type: none"> ▶ We set, and strive to meet, our high expectations ▶ We celebrate every step of our progress to our goals. ▶ We take pride in ourselves and what we do
<p>Tolerance and Mutual Respect are intrinsic British Values.</p>	<p>Our Behaviour Rules and the high expectations we set reflect the standards and laws of our British society.</p>	<p>By listening to the ideas of others in order to understand and live by a democratic process we are upholding the important British Value of Democracy.</p>	<p>Liberty is a fundamental British Value, which we fulfil by exercising ours in a responsible and productive way.</p>

Personal Development Portfolio

KS3 - each student will receive a blue card folder to keep all their RSHE/Careers/Certificates etc. in.

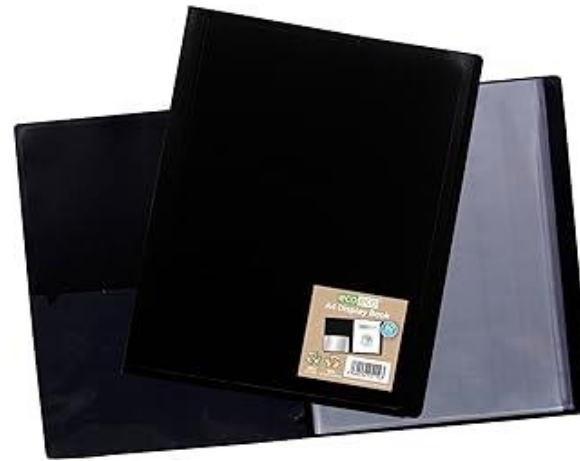
Yr 10 – receive a multi-wallet plastic folder to keep all the above as well as the Innerscope booklet, CV and other documents in.

Yr 11 - will hopefully graduate to a more formal, graduated PD Portfolio ready to assist them in their next steps on the professional journey.

ALL students will be provided with their updated Class Charts data at the end of every term.

ALL folders will be kept in their team rooms and will move with them every year.

A focus on ensuring all activities are carried out by Team Leaders is essential in readiness



What is INNERSCOPE?

James Aidoo

'Unleashing potential through developing leaders'

[Here](#) is a link to their website

Why only Yr 10?

The programme is designed with Yr 10 in mind.

What are the 4Ps?

Protester, **P**assenger, **P**articipant, **P**ioneer

What is involved?

Yr 10 [KEYNOTE](#) Speaker from London to present to Year 10/9

[Staff PD](#) on **Thursday 19th of September 3:15-4:15pm**

INNERSCOPE Coaching Booklet in Teams linked with weekly clips through an online platform we have access to from September after the 19th (all provided by INNERSCOPE)

Why now?

This is our natural step to move Oracy to the next level and further prepare our students for the wider world of work, helping them understand what type of leaders they are/want to be through coaching sessions.



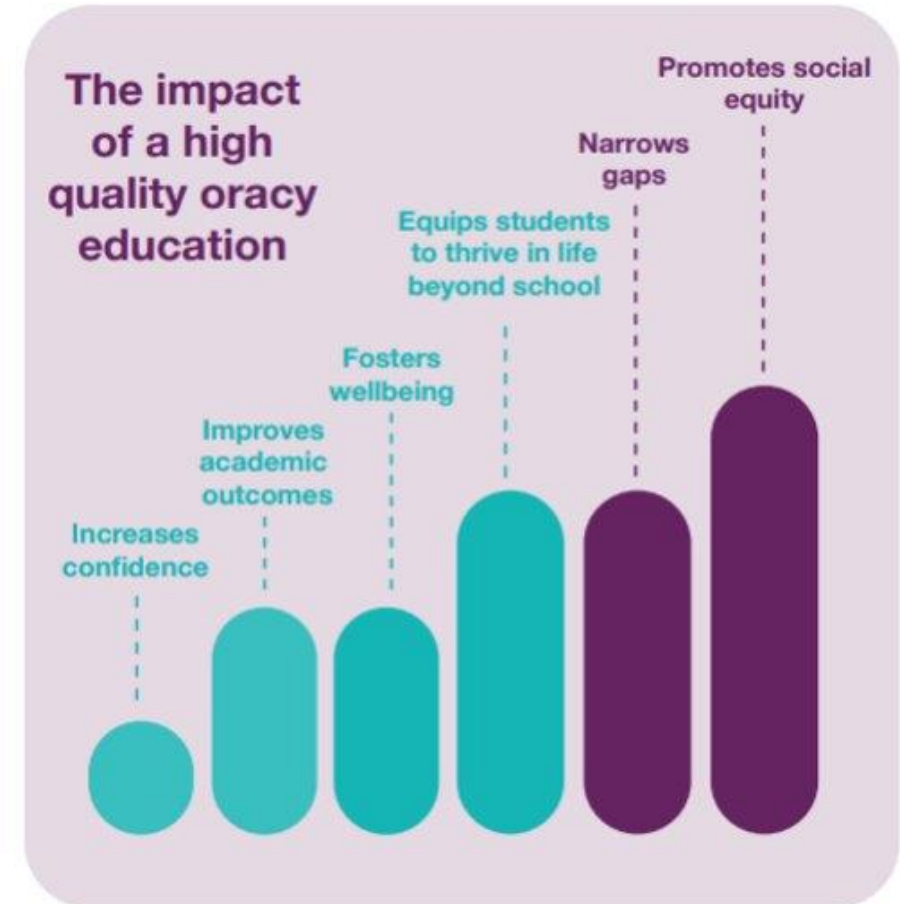
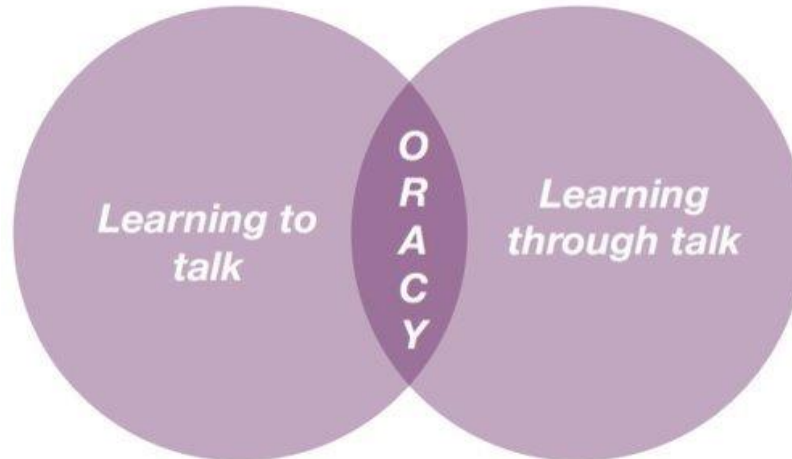
What is Voice 21?



Voice 21 is a national charity that exists to enable teachers and schools to provide a high-quality oracy education so that all young people can find their **voice** for success in school and life.



Newsome
Academy



What is Voice 21?



Our vision:

**Oracy is seamlessly intertwined
in every student's day.**



**Newsome
Academy**

Newsome Academy became a **Centre of Excellence** for oracy in the summer of 2024 as we demonstrated that we are committed to transforming our school's teaching, learning and ethos to ensure that all our students benefit from a high-quality oracy education over the last 4 years. Links to resources/CPD slides [here](#) (also on the dashboard).



All students will have their own proud folder containing all their achievements – in readiness for a successful College interview.

