



# Newsome Academy

Everyone Exceptional Everyday

# WELCOME!

STUDENT PRESENTATIONS  
HEADTEACHER INTRO  
ACADEMY TOURS

TUESDAY 24TH SEPTEMBER - 4:30-6:30

Officially rated  
'Good' with  
'Outstanding'  
features



COME & SEE OUR AWESOME ACADEMY TO  
GET A FEEL FOR WHAT IT IS LIKE TO BE  
PART OF A 'CARING, CLOSE-KNIT FAMILY!'





# TRANSITION GUIDANCE 2024-2025



**Newsome  
Academy**



# Questions we may be asking

1. Does this school have the 'vibe' I want for my child?
2. What are the staff like?
3. Who will keep my child safe?
4. Who will support my child's development?
5. How will they learn?
6. Does this school care for me as well as my child?



**Newsome  
Academy**



# Our Trust: Our Family



Our family of academies work collaboratively to create a trust Where Hearts & Minds Connect with value-driven partners to ensure education impacts positively on students, staff and communities we serve.

[\*\*CLICK HERE\*\*](#)

**TO SEE OUR ACADEMY PROMO VIDEO...**



**Newsome  
Academy**

**YOU ARE IN A PROUD  
SCHOOL WITH HIGH  
EXPECTATIONS...**



Officially rated  
'Good' with  
'Outstanding'  
features

**Ofsted**  
Good  
Provider

*Celebrating*  
Newsome Academy  
Eton Scholarship 2022  
Orwell Award 2022  
**Gaganpal Singh**



The SEND  
Awards

**The SEND Awards  
2024 Winner**

**EXCEPTIONAL STANDARDS  
EXCEPTIONAL LEARNING  
EXCEPTIONAL SUPPORT**

- **To be a pupil at this school is to be part of a caring, closeknit family.** Staff and pupils form strong relationships that underpin the school's work. Pupils are safe. They are nurtured to achieve their full potential. In the words of one pupil, echoing the sentiments of many, 'We belong here.'
- **Pupils respond admirably to the high expectations that staff have of them. They are happy, enjoy learning and achieve well.** Teachers support pupils very well. Pupils learn a curriculum which is constructed and designed to give them the best start in life.
- **Pupils' conduct at the school is exemplary and an excellent model of inclusion.** Pupils are unfailingly polite and exhibit the school's values of respect, integrity, teamwork and aspiration. Pupils are attentive in lessons and enjoy learning.
- **The school prioritises reading. Pupils are provided with many opportunities to read.** They are encouraged to read aloud in class, practise new vocabulary and develop their oracy skills. Pupils receive weekly literacy seminar sessions in which they read and discuss a text together.
- **Transformative changes to the school have been made by skilled and determined leaders.** They have a sharp understanding of the school's many strengths and remaining areas for development. Governors and trustees provide support and hold school leaders to account effectively.
- **English was a showcase department in our last Ofsted Inspection.**

IN FEBRUARY 2024, WE  
WERE PRAISED FOR MANY  
THINGS. YOU WILL BE  
JOINING A FANTASTIC  
FAMILY!

Officially rated  
'Good' with  
'Outstanding'  
features



Ofsted  
Good  
Provider

# QUALITY OF EDUCATION AT NEWSOME

HOW YOUR TEACHERS WILL STRUCTURE LEARNING TO DELIVER THE INTENDED CURRICULUM

WE STRUCTURE LEARNING WITH A **BUSINESS CONSCIENCE** & **CREATIVE APPROACHES** TO PREPARE **GLOBAL CITIZENS**

## LESSON STRUCTURES

THESE ARE THE SKILLS THAT ARE INCLUDED IN LESSONS & HIGHLIGHTED WHEN IT IS A FOCUS



### ACTIVATE

WARM-UP ACTIVITY  
LINK LEARNING  
LEARNING INTENTIONS

THE START OF THE LESSON WHERE YOU START LEARNING AS SOON AS YOU WALK THROUGH THE DOOR. ACTIVITIES WILL **WARM-UP** YOUR BRAIN & WILL **LINK** CURRENT/PRIOR **LEARNING**. YOUR TEACHER WILL EXPLAIN THE **LEARNING INTENTIONS** SO YOU KNOW WHAT IS EXPECTED OF YOU & YOU UNDERSTAND WHERE YOU ARE IN THE CURRICULUM SEQUENCE.



### MOTIVATE

DISCUSS  
ATTEMPT  
ENGAGE

AFTER **DISCUSSIONG** & **ATTEMPTING** COLLECTIVLY WITH THE TEACHER, YOU WILL ATTEMPT ACTIVITIES ON YOUR OWN OR WITH OTHERS DEPENDING ON THE LESSON. YOU WILL BE ENCOURAGED TO HAVE A 'CAN DO' ETHOS AND CHALLENGE YOUR SELF TO LEARN **ENGAGE**.



### DEMONSTRATE

CHALLENGE  
EXTEND  
ACCOMPLISH

AFTER LISTENING AND DIGESTING THE INFORMATION NEEDED, YOU WILL **CHALLENGE** YOURSELF TO DEMONSTRATE YOUR UNDERSTANDING AND **EXTEND** THIS FURTHER TO SHOW YOUR TEACHER THAT YOU HAVE **ACCOMPLISHED** YOUR LEARNING.

## LEARNING STRUCTURES

THESE ARE THE SKILLS THAT ARE INCLUDED IN LESSONS & HIGHLIGHTED WHEN IT IS A FOCUS



**MEMORY  
RECALL**



**METACOGNITION  
THINKING**



**COLLABORATE  
WITH OTHERS**



**LITERACY  
ORACY**



**NUMERACY  
APPLICATION**



**PROFESSIONAL  
APPLICATION**



THE CURRICULUM WILL FOLLOW THE **WHOLE-SCHOOL/SUBJECT INTENT**, **SUBJECT SEQUENCE** & ASSESSED ON **WIDER OUTCOMES** & **KEY REPORTING CYCLE**  
KS3 STUDENTS WILL USE THEIR **KNOWLEDGE ORGANISERS** & KS4 STUDENTS WILL USE THEIR **REVISION GUIDES** & **STUDY SUPPORT PACK**

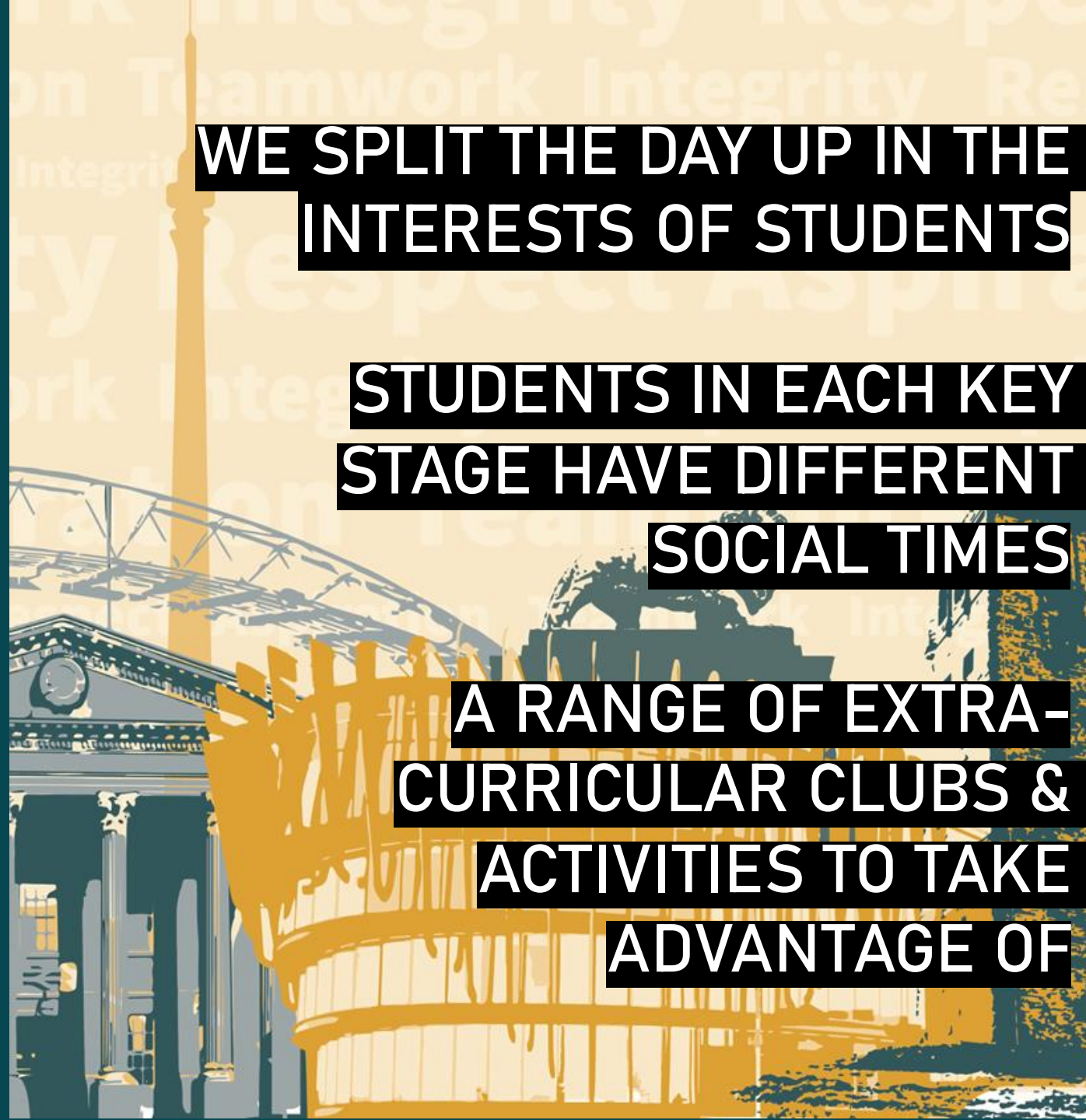
# OUR SCHOOL DAY...

8:00-8:30	Dining Hall open to students - Free Business Breakfast
8:30-8:35	Students gather on the courts
8:35-8:45	Students move to line ups (Register for those in Seminars) and transition
8:45-9:10	Enrichment/Seminar
9:10 – 10:10	Period 1
10:10 – 11:10	Period 2 KS4 (Break for KS3 10:10 – 10:30)
10:30 – 11:30	Period 2 KS3 (Break for KS4 11:10-11:30)
11:30 – 12:30	Period 3
12:30 – 1:00	Year 7, 8 & 9 KS3 Lunch
12:30 – 1:30	Year 10 & 11 Period 4
1:00 – 2:00	Year 7, 8 & 9 Period 4
1:30 – 2:00	Year 10 & 11 KS4 Lunch
2:00 – 3:00	Period 5
3:00	Academy day ends
3:00 – 4:00	Enrichment time/Y11 Period 6

**WE SPLIT THE DAY UP IN THE INTERESTS OF STUDENTS**

**STUDENTS IN EACH KEY STAGE HAVE DIFFERENT SOCIAL TIMES**

**A RANGE OF EXTRA-CURRICULAR CLUBS & ACTIVITIES TO TAKE ADVANTAGE OF**







# PASTORAL



	YEAR 7	YEAR 8	YEAR 9	YEAR 10	YEAR 11
 <b>MS CARTER</b> BEHAVIOUR & ATTENDANCE LEAD	 <b>MS CROSSLAND</b> HEAD OF YEAR 7 ENGLISH TEAM LEADERS	 <b>MS PARSONAGE</b> HEAD OF YEAR 8 MATHS TEAM LEADERS	 <b>MS FLETCHER</b> HEAD OF YEAR 9 HUMANITIES TEAM LEADERS	 <b>MS SYKES</b> HEAD OF YEAR 10 VTC TEAM LEADERS	 <b>MS HALLWORTH</b> HEAD OF YEAR 11 SCIENCE TEAM LEADERS



**MR HOLMES**



**MS GAYE**



**MS CARR**



**MS HILL**

PASTORAL SUPPORT OFFICERS

SPEAK TO THE  
 TEAM IF YOU NEED ANY  
 SUPPORT.  
[talk@newsomeacademy.co.uk](mailto:talk@newsomeacademy.co.uk)



# SAFEGUARDING



**MS HALL**  
**DSL**



**MS WOOD**  
**DEPUTY DSL**  
**COUNSELLOR**



**MS LEROY**  
**DEPUTY DSL**



**MS BROOK**  
**WELLBEING**  
**LEAD**

**SPEAK TO THE  
TEAM IF YOU NEED  
ANY SUPPORT.**  
[talk@newsomeacademy.co.uk](mailto:talk@newsomeacademy.co.uk)

**WE HAVE A  
DEDICATED TEAM  
TO HELP YOU IN  
TIMES OF NEED!**



**EVERYONE SAFE EVERYDAY**





**Mr Mitchell**

Assistant Headteacher

- Manages the overall transition process.



**Ms Hall**

Assistant Headteacher  
Inclusion & SEND

- Manages the additional SEND & vulnerable process.



**Ms Crossland**

Head of Year 7

- Head of Year for your child next year and current Head of Year 7.



# TRANSITION CONTACTS



Contact us on our dedicated email address if you need any support throughout this process.

[Transition@newsomeacademy.co.uk](mailto:Transition@newsomeacademy.co.uk)



## Open Evening

24th September

- General look and feel of the Academy.



## Transition Evening

22nd May

- Family meeting for updates and preparation.



## Transition Day

1st July

- Y6 day in school experiencing secondary school life. Evening drop-in for families.

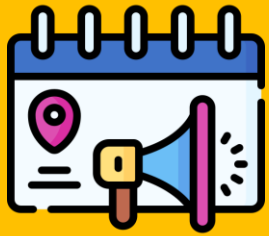


# KEY TRANSITION DATES



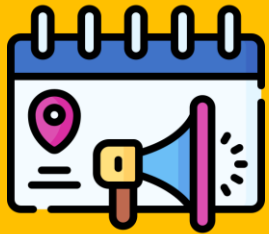
Contact us on our dedicated email address if you need any support throughout this process.

[Transition@newsomeacademy.co.uk](mailto:Transition@newsomeacademy.co.uk)



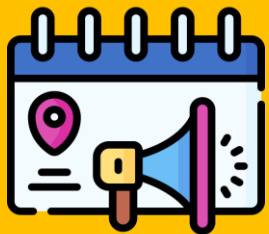
### Subject Stalls

- Have a look & discuss the range of subjects offered.



### Subject Demonstrations

- Student guides to have a look at some class demonstrations.



### Tours

- Student guides to have a look at some key areas in school.



# OPEN EVENING EVENTS



Contact us on our dedicated email address if you need any support throughout this process.

[Transition@newsomeacademy.co.uk](mailto:Transition@newsomeacademy.co.uk)



Admissions & Transitions



Term Dates Calendar



News & Letters



ParentPay



School Uniform



School Lunches

## Check out our website

- [Click here](#) to see more online information on preparation for joining Newsome.



# MORE INFORMATION & PREPARATION



Contact us on our dedicated email address if you need any support throughout this process.

[Transition@newsomeacademy.co.uk](mailto:Transition@newsomeacademy.co.uk)



# Newsome Academy

Everyone Exceptional Everyday

**WE LOOK FORWARD TO  
WELCOMING YOU TO OUR  
SPECIAL FAMILY.**

