



FAMILY NEWS WEEKLY UPDATE

Exceptional



SCHOOL/STUDENT COMMUNICATION
HOME/SCHOOL COMMUNICATION



MESSAGES

HOME



Families should regularly visit our website on the link above.

Our Families ▾ Contact Us

Admissions & Transitions

Term Dates Calendar

News & Letters

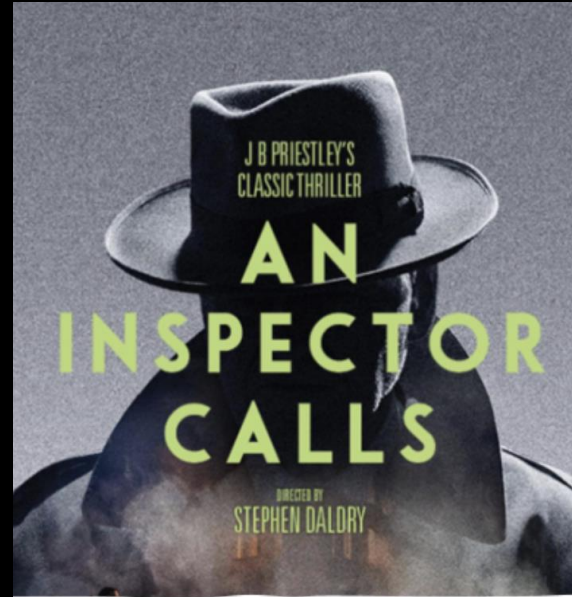
ParentPay

School Uniform

School Lunches

School Day

NEWSOME FAMILY UPDATE



KS4 Theatre trip

- Alhambra Theatre Bradford
- Saturday 3rd May 2025
- School pick up 6pm
- Return approx. 10pm
- Tickets and coach travel- £36 (via Parentpay)
- Numbers are limited – only 48 tickets available

Interested? Ask your teacher for a letter or see Mrs Jackson for further details.

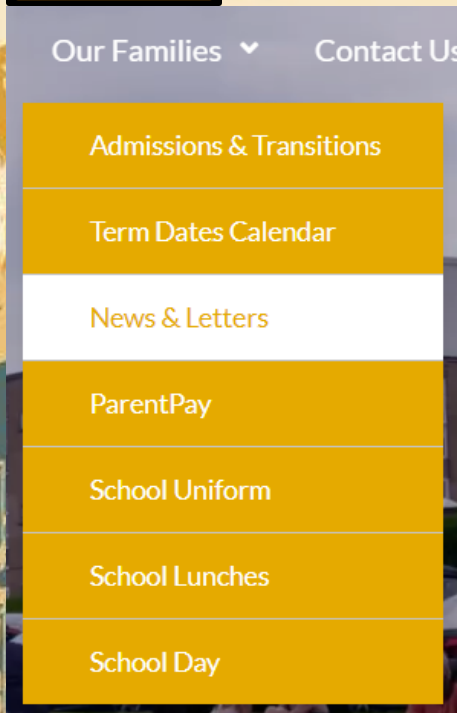
The An Inspector Calls theatre trip is now being offered to Year 11. There are 28 spaces left to fill.

MESSAGES

HOME



Families should regularly visit our website on the link above.



NEWSOME FAMILY UPDATE

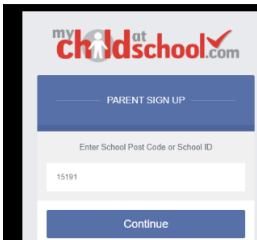
IMPORTANT Communication System Update – My Child at School

Thursday 30th January

Dear parents and carers,

We are writing to inform you of an important update regarding our online platform for student information and communication. We have decided to transition from the SIMs and ClassCharts platform to a new system called Bromcom. This change is part of our ongoing effort to improve the efficiency and quality of the information we provide you by having everything you need in one place. Bromcom will offer enhanced features and a more user-friendly experience, which we believe will greatly benefit both families and students. The app itself is called My Child At School (or MCAS) and is available on both iOS and Android devices, as well as being accessible via their website from your internet browser. We will be using the MCAS system for ALL future communications, parents' evening booking and rewards/behaviour monitoring, so please make sure you follow the below steps to sign-up. We recommend **downloading the MCAS app (My Child at School)** as this gives you everything you need in a user-friendly format.

- Download the MCAS parent app or login at: <http://www.mychildatschool.com>
- Follow the set-up instructions below.
- Click on **PARENT SIGN UP** and enter the school ID: **15191** or Postcode: **HD4 6JN**



- Enter your email address (this **MUST** be the email address we have on record for you and you **MUST** have parental responsibility).
- If you have not registered an email address or have changed your email, you **MUST** get in touch with us as soon as possible to update your details. You cannot register without it.

- Enter your email address (this **MUST** be the email address we have on record for you and you **MUST** have parental responsibility).
- If you have not registered an email address or have changed your email, you **MUST** get in touch with us as soon as possible to update your details. You cannot register without it.

Please don't hesitate to contact us by phone or email if you are having any technical issues or to update your email address:

office@newsomeacademy.co.uk (01484 516712)

CALENDAR

1 WEEK

UNTIL

NEXT

BREAK

2025						
January	February	March	April	May	June	July
1 We <small>New Year's Day</small>	1 Sa	1 Sa			1 Su	1 Tu
2 Th	2 Su	2 Su			2 Mo	2 We
3 Fr	3 Mo	3 Mo			3 Tu	3 Th
4 Sa	4 Tu	4 Tu			4 We	4 Fr
5 Su	5 We	5 We		5 Mo <small>Bk. Hol.</small>	5 Th	5 Sa
6 Mo	6 Th	6 Th	6 Su	6 Tu	6 Fr	6 Su
7 Tu	7 Fr	7 Fr	7 Mo	7 We	7 Th	7 Sa
8 We	8 Sa	8 Sa	8 Tu	8 Th	8 Fr	8 Su
9 Th	9 Su	9 Su	9 We	9 Fr	9 Sa	9 Su
10 Fr	10 Mo	10 Mo	10 Th	10 Sa	10 Su	10 Mo
11 Sa	11 Tu	11 Tu	11 Fr	11 Su	11 Mo	11 Tu
12 Su	12 We	12 We	12 Sa	12 Mo	12 Th	12 Sa
13 Mo	13 Th	13 Th	13 Su	13 Tu	13 Fr	13 Sa
14 Tu	14 Fr	14 Fr	14 Mo	14 We	14 Sa	14 Su
15 We	15 Sa	15 Sa	15 Tu	15 Th	15 Su	15 Mo
16 Th	16 Su	16 Su	16 We	16 Fr	16 Mo	16 Tu
17 Fr	17 Mo	17 Mo	17 Th	17 Sa	17 Tu	17 We
18 Sa	18 Tu	18 Tu	18 Fr <small>Good Friday</small>	18 Su	18 We	18 Th
19 Su	19 We	19 We	19 Sa	19 Mo	19 Th	19 Sa
20 Mo	20 Th	20 Th	20 Su	20 Tu	20 Fr	20 Su
21 Tu	21 Fr	21 Fr	21 Mo <small>Easter Monday</small>	21 We	21 Sa	21 Mo
22 We	22 Sa	22 Sa	22 Tu	22 Th	22 Su	22 Tu
23 Th	23 Su	23 Su	23 We	23 Fr	23 Mo	23 We
24 Fr	24 Mo	24 Mo	24 Th	24 Sa	24 Tu	24 Th
25 Sa	25 Tu	25 Tu	25 Fr	25 Su	25 We	25 Fr
26 Su	26 We	26 We	26 Sa	26 Mo <small>Spring Bk. Hol.</small>	26 Th	26 Sa
27 Mo	27 Th	27 Th	27 Su	27 Tu	27 Fr	27 Su
28 Tu	28 Fr	28 Fr	28 Mo	28 We	28 Sa	28 Mo
29 We		29 Sa	29 Tu	29 Th	29 Su	29 Tu
30 Th		30 Su	30 We	30 Fr	30 Mo	30 We
31 Fr		31 Mo	31 Th	31 Sa		31 Th

WE ARE HERE

Y11 MOCK EXAMS

Y11 REAL EXAMS

Y7-10 YEAR END EXAMS

GCSEs START 12TH MAY
 GCSE results day in 2025 is Thursday, August 21 when you collect your results

HALF-TERM EXCEPTIONAL EDUCATIONAL ORGANISATION

Facilitate your child's memory development by:

- Looking through our [Curriculum Plans](#) to see the bigger picture.
- Going through the [Study Support Pack](#) with you.
- Going through the [Knowledge Organisers](#) and testing your knowledge



SCHOOL/STUDENT COMMUNICATION
HOME/SCHOOL COMMUNICATION

WEEK 1 – WEEK STARTING 6TH JANUARY
• EXCEPTIONAL ROUTINES & EXCEPTIONAL PROGRESS UNDERSTANDING

MONDAY	INSET DAY – CLOSED TO STUDENTS STAFF WILL BE INTRODUCING A NEW PACKAGE TO MONITOR STUDENTS
TUESDAY	WHOLE SCHOOL SEMINAR: WE ARE NEWSOME (DW/SB/SM/CH) (LM SPOTLIGHTING Y11) SEMINAR GOING THROUGH P1 FOR YEARS 7-10
WEDNESDAY	ROUTINE CHECK
THURSDAY	ROUTINE CHECK
FRIDAY	ROUTINE CHECK

CLASSROOM ASPIRATION
HOW WELL ARE WE UNDERSTANDING OUR EXPECTATIONS (CERT/HTA)?
HOW WELL DO WE ALL HOLD ACCOUNT FOR ATTENDANCE?

WEEK 2 – WEEK STARTING 13TH JANUARY
• EXCEPTIONAL SEATING PLANS FOR DYNAMICS & GROUPING

MONDAY	WHOLE-SCHOOL SEMINAR: YOUR FUTURE (LM)
TUESDAY	SPIN EVENT Y7/8 SPORTS HALL ATHLETICS 4:00-5:45
WEDNESDAY	ROUTINE CHECK Y11 MOCK INTERVIEWS
THURSDAY	Y11 MOCK INTERVIEWS
FRIDAY	Y11 MOCK INTERVIEWS SPIN EVENT – KS3/4 NEW AGE KURLING 9:45-11:15

CLASSROOM ASPIRATION
DO WE ALL FOLLOW OUR ROUTINE?

WEEK 3 – WEEK STARTING 20TH JANUARY
• EXCEPTIONAL SEND AWARENESS & ADDITIONAL ADULTS

MONDAY	WHOLE SCHOOL SEMINAR: SAFEGUARDING (AH) Y11 FOOD/COOKERY PRACTICAL ASSESSMENTS
TUESDAY	YEAR 9 PROGRESS & OPTIONS EVENING Y11 FOOD/COOKERY PRACTICAL ASSESSMENTS
WEDNESDAY	Y11 FOOD/COOKERY PRACTICAL ASSESSMENTS ROUTINE CHECK
THURSDAY	Y11 FOOD/COOKERY PRACTICAL ASSESSMENTS
FRIDAY	Y11 FOOD/COOKERY PRACTICAL ASSESSMENTS

SEND AWARENESS CHECK
DO WE ALL KNOW OURSELVES & EACH OTHER?

WEEK 4 – WEEK STARTING 27TH JANUARY
• EXCEPTIONAL TEACHING

MONDAY	WHOLE SCHOOL SEMINAR: HOLOCAUST (CH) SPIN YOUTH LEADERSHIP DAY
TUESDAY	ROUTINE CHECK
WEDNESDAY	CHINESE NEW YEAR SPIN Y6 AIM ACADEMY 4:00-5:30
THURSDAY	ROUTINE CHECK
FRIDAY	SPIN EVENT – KS3/4 NEW AGE KURLING 9:45-11:15

ADAPTIVE TEACHING
Do we know our 'micropopulations'?

WEEK 5 – WEEK STARTING 3RD FEBRUARY
• EXCEPTIONAL PRIDE IN BOOKS

MONDAY	WHOLE SCHOOL SEMINAR: ASPIRATION (SBE)
TUESDAY	YEAR 10 PROGRESS EVENING SAMBA DAY (MUSIKA) 10:00 – 2:00
WEDNESDAY	ROUTINE CHECK
THURSDAY	ROUTINE CHECK
FRIDAY	Y11 GREENHEAD INTERVIEWS

LEARNING WALKS
HOW MUCH PRIDE DO STUDENTS HAVE IN THEIR WORK?

WEEK 6 – WEEK STARTING 10TH FEBRUARY

MONDAY	WHOLE SCHOOL SEMINAR: CAREERS (SMI)
TUESDAY	SAFER INTERNET DAY
WEDNESDAY	ROUTINE CHECK
THURSDAY	QUALITY OF STUDENT WORK HT3
FRIDAY	QUALITY OF STUDENT WORK HT3 Non-Uniform day

HARD WORKS PAYS OFF!
MOCK EXAM PREPARATION
END OF TERM ASSESSMENTS & GROUPINGS
OPTIONS DISCUSSIONS

FEBRUARY HALF-TERM BREAK (1 WEEK)

- ARE CHILDREN WORKING FROM HOME (KNOWLEDGE ORGANISERS)?
- ARE YEAR 11 FOLLOWING THEIR STUDY PACKS & GUIDES?
- ARE FAMILIES SUPPORTING EDUCATION AT HOME?





WE OFFER A RANGE OF CLUBS FOR FUN AND LEARNING THAT STUDENTS CAN TAKE ADVANTAGE OF...



EXTRA CURRICULAR CLUBS

3PM-4PM

Extra-Curricular Activities: Spring Term 1 24/25 (3-4pm)					
DAY	CLUB	LOCATION	STAFF	P6 Wk A	P6 Wk B
MONDAY	<ol style="list-style-type: none"> Netball - Y7 – 10 Homework Club Cooking Club Fitness Algebra L3 Drop In – yr10 invite only 	<ol style="list-style-type: none"> Sportshall/Astro 608 602 Fitness suite 407 	<ol style="list-style-type: none"> HRA/MHO DTU GCO GEA/JDA MAS 	MFL BUSINESS	HISTORY GEOGRAPHY
TUESDAY	<ol style="list-style-type: none"> Wheelchair Basketball – Invite only 	<ol style="list-style-type: none"> Sports hall 	<ol style="list-style-type: none"> SCU 	ENGLISH	ENGLISH
WEDNESDAY	<ol style="list-style-type: none"> Homework Club Girls Football Choir Cricket Nets BSL Club Computing Club 	<ol style="list-style-type: none"> 608 Astro 402 Sports hall 803 608 	<ol style="list-style-type: none"> DTU External/HHI ECO JDA DCR OMO 	MATHS	MATHS
THURSDAY	<ol style="list-style-type: none"> GCSE Art – KS4 only Homework Club Basketball all years Music Club Cheerleading Sparx Club Photography Support Yr 10 ONLY 	<ol style="list-style-type: none"> 609 60 Sports hall 402 Dance Studio 406 601 	<ol style="list-style-type: none"> LSN NMA JDA AMC SMT EBU AME 	SCIENCE	SCIENCE
FRIDAY	<ol style="list-style-type: none"> Creative Club- RM, Textiles, Art 	<ol style="list-style-type: none"> 607 	<ol style="list-style-type: none"> AME/LMA 	OPTION C	OPTION B





Independent learning will be set as per the timetable below for each year group to ensure it is spread out across the week. Failure to complete homework to an acceptable standard will be recorded on ClassCharts.


	Monday	Tuesday	Wednesday	Thursday	Friday
Year 7*	7NEW MFL	English	Science	Maths	7SOM MFL
Year 8*	8NEW MFL	8SOM MFL	Maths	English	Science
Year 9*	MFL	Science	English		Maths
Year 10	English Option C	Maths	MFL Option D	Science	Hums
Year 11	Maths	MFL Option D	English	Hums Option C	Science

- Due to A/B Week timetables, classes in Years 7-9 will receive Hums and VTC homework at different times each week.



HOMEWORK CALENDAR





Here is a reminder of the resources that are on offer to you whilst learning at home. Students are lucky enough to get above and beyond that of most schools and it's important these are taken advantage of for success.

KEY STAGE 3 (YEARS 7,8,9)

KNOWLEDGE ORGANISERS

This is broken down per each half term and contain content and questions to work from home on.

HOMEWORK SCHEDULE

This supports time management at home and a guide for Teachers so work issuing is not given all in one go.

KEY STAGE 4 (YEARS 10& 11)

EXAM BOARD LIST

The list on the previous page offers guidance of the vast range of online resources such as past papers etc. This should be used as a guide.

REVISION GUIDES

ALL students have/will been given **FREE** guides which they should have at home. There's no excuses for loss

WIDER SUPPORT

ADDITIONAL SOFTWARE LINKS | WELLBEING APPS | INDEPENDANT STUDY GUIDES



HOME LEARNING





**Newsome
Academy**



Attendance Matters		
100%	0 DAYS	0 LESSONS MISSED
99%	1 DAY	5 LESSONS MISSED
98%	3 DAYS	15 LESSONS MISSED
97%	1 WEEK	25 LESSONS MISSED
96%	1.5 WEEKS	35 LESSONS MISSED
94%	2 WEEKS	50 LESSONS MISSED
93%	2.5 WEEKS	65 LESSONS MISSED
92%	3 WEEKS	75 LESSONS MISSED
90%	3.5 WEEKS	90 LESSONS MISSED

Current Whole school to date = 93.4%

WEEKLY WINNERS!!!!

Year 7 – JHA

Year 8 – ADO

Year 9 – SJO & LDE

Year 10- HRA - 100%!!

Year 11- EGA

BEST Year group = Year 9 - 94.8%



THIS WEEK'S SEMINAR



Careers
Sam Wilson

Understanding apprenticeships

Version 2: September 2024



Today's session

What we'll be covering

APPRENTICESHIPS

WHAT THEY ARE

ROLES & LEVELS

APPRENTICESHIP OPTIONS

SEARCH & APPLY

NEXT STEPS

What are apprenticeships?



Employed



Off the job



Intermediate -
degree



Paid a salary



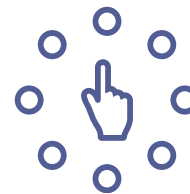
Typically 1-6
years



Real
responsibilities



Contract



700+ standards



Not the easy
option

Levels of apprenticeships

Intermediate

Equivalent to:

5 GCSE passes at grade 9-4 (A*-C)

Level 2

Advanced

Equivalent to:

2 A levels /
International
Baccalaureate

Level 3

Higher

Equivalent to:

Foundation
degree and
above

Levels 4-7

Degree

Equivalent to:

Bachelors or
masters degree

Levels 6 & 7



Levels of apprenticeships

Intermediate (L2)

- Childcare
- Security operative
- Barber
- Aviation ground handler
- Dog groomer
- Adult Care
- Accounts assistant
- Pharmacy assistant
- Marina operative
- Junior estate agent

140+ standards

Advanced (L3)

- Engineering technician
- Pastry chef
- Multi-channel marketer
- Fundraiser
- Scenic artist
- Electrician
- Community wellbeing worker
- Data technician

230+ standards

Higher

- Visual effects artist
- Town planning assistant
- Sports coach
- Space engineering technician

110+ standards (L4)

- Vet technician
- Nursing associate
- Rail engineer
- Marine pilot
- Nuclear technician

40+ standards (L5)

Degree

- Geoscientist
- Accounting manager
- Midwife
- Social worker
- Civil engineer

110+ standards (L6)

- Doctor
- Game programmer
- Play therapist
- Solicitor
- Economist

60+ standards (L7)

Career starter apprenticeships

- ✓ Bricklayer, Plasterer, Electrician, Engineering Fitter, Plumber, Horticulture or Landscape Construction Operative
- ✓ Chef, Hospitality Team Member
- ✓ Business Administrator, Content Creator
- ✓ Cyber Security Technician, Digital Support Technician, Data/Software Technician, Information Communications Technician
- ✓ Early Years Educator, Teaching Assistant
- ✓ Dental Nurse, Healthcare Support Worker
- ✓ Freight Forwarding Specialist, Warehouse Operative

START YOUR CAREER THROUGH A CATERING APPRENTICESHIP!

A guide for young people.

DID YOU KNOW...
Chefs can be promoted from apprentice to a kitchen management role in a few years. They are in high demand across the country, making it a great choice for those looking to progress to the top. Most importantly, you don't need previous experience to get started. If you have a passion for food, like working as part of a team and are ready to learn, this could become your lifelong career.

AN APPRENTICESHIP IS A JOB WITH A SALARY
You'll also study the equivalent of one day per week to build skills in your chosen profession. The combination of practical work and classroom teaching means you can put into practice the things you learn. You'll gain skills such as communication, teamwork, problem solving and IT.
You'll be well on your way to achieving your career goals while others are just getting started.

MEET SOME APPRENTICES

MEET THEO...
who's found his passion as a Production Chef at an Italian restaurant.

MEET ESTHER...
a Commis Chef who aims to open her own restaurant.

MEET TOM...
who is now a Kitchen Team Leader.

DURATION: APPROX. 12 MONTHS

SALARIES: UP TO £20K. THIS CAN RISE QUICKLY DUE TO DEMAND.

FIND OUT MORE ON THE NEXT PAGE

GREENE KING

MIGHT BE: preparing ingredients and salads, washing dishes, cleaning

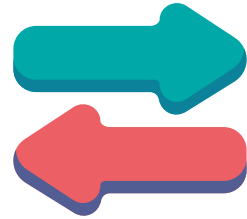
ENDING YOUR APPRENTICESHIP, PROGRESS TO:
► Senior Culinary Chef

HOW TO FIND AN APPRENTICESHIP
Search for apprenticeships in

Flexibilities in apprenticeships



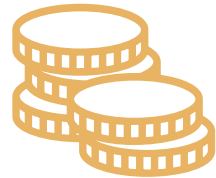
Part-time



Flexi-job



Accelerated



Bursaries



Higher & Degree apprenticeships

- ✓ University fees paid by employer and/or Government
- ✓ No debt
- ✓ Integrated degree or degree level
- ✓ Experience
- ✓ 4-6 years
- ✓ 100+ universities (plus colleges, training providers)
- ✓ Employer selects University/provider

Work full-time and study part-time



Competitive



Progression



Required

Meet some apprentices



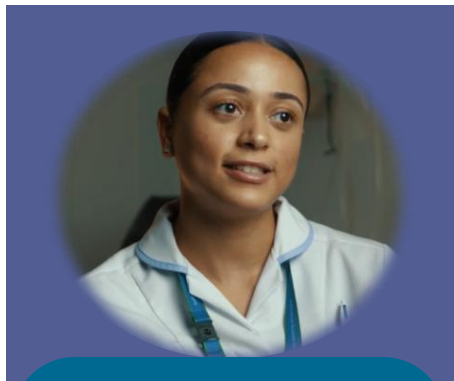
Samuel - Level 2
Credit Controller



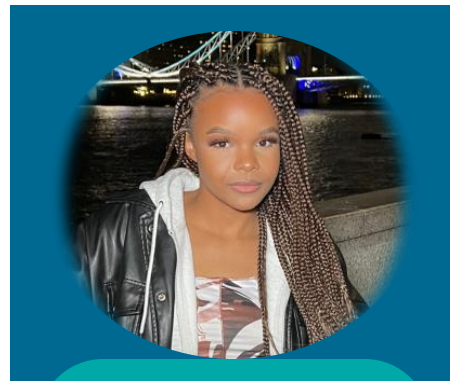
Alicia - Level 3
Digital Marketing



Anna - Level 4
Marketing Executive



Kelbydiamond - Level 5
Nursing Associate



Parris - Level 6
Software Engineer



Josh - Level 7
Solicitor

Meet some apprentices



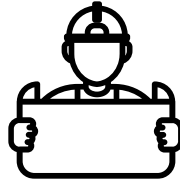
Range of apprenticeships



First Officer
Pilot



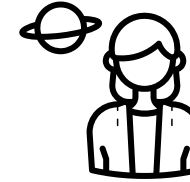
Paralegal



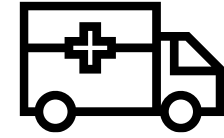
Quantity
Surveyor



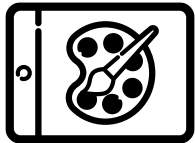
Dietician



Aerospace
Engineer



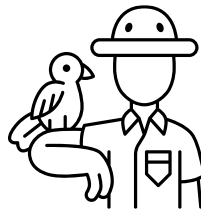
Paramedic



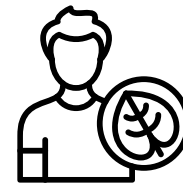
Visual Effects
Artist



Architect



Zookeeper



Ecologist



Business
Administrator



Chef

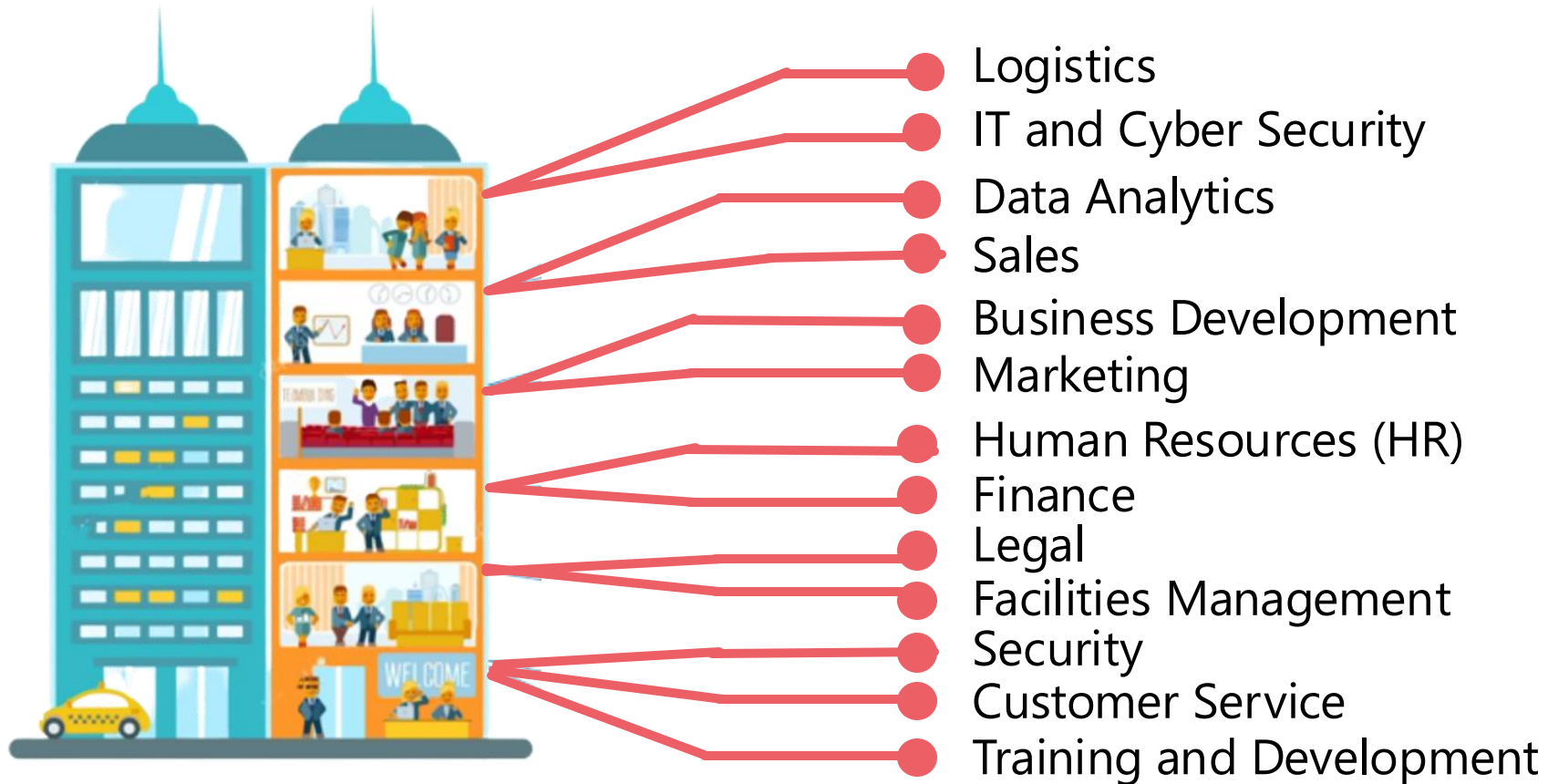
Range of employers



Range of employers



Look inside the company



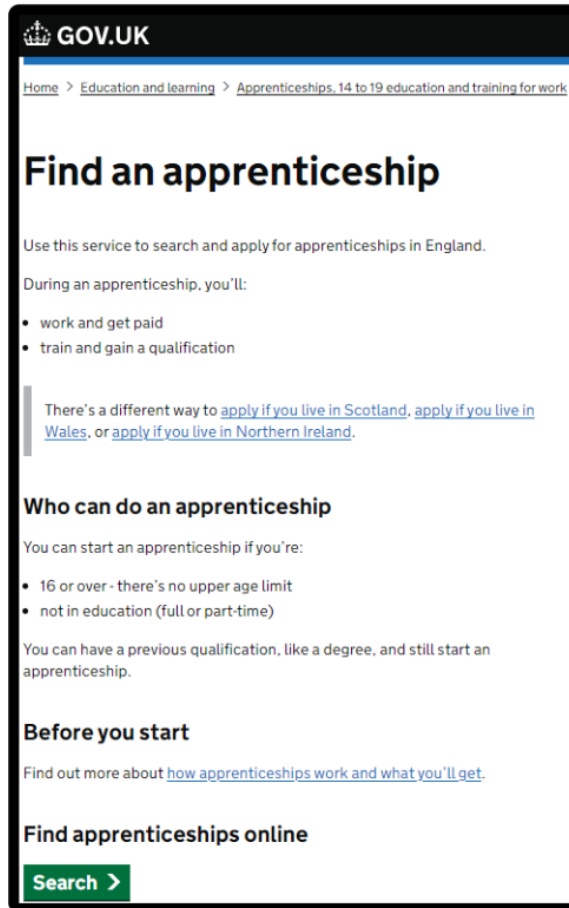
Where are the vacancies?



Yorkshire
Apprenticeship
Service



How do you find apprenticeships?



WHAT IS FAA?

Showcasing live apprenticeship jobs



20,000+ vacancies
over the year



Free to use



Secure site

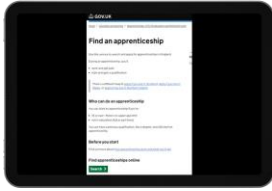


Apply quickly

**THE
ASK
PROGRAMME**

APPRENTICESHIPS
& TECHNICAL
EDUCATION

Searching for apprenticeships



Find an
apprenticeship



Yorkshire
Apprenticeship
Service



Company websites



Careers
websites



Social media



Friends and
family



Higher and
Degree listing

UCAS

UCAS

Useful websites & resources

Resources to support you in learning about apprenticeships



Application guides



Factsheets



Using Faa guide



Webinars



Employer profiles



Apprentice advice



www.amazingapprenticeships.com

Useful websites

Apprenticeship information

CAREERS GUIDANCE

- www.nationalcareers.service.gov.uk
- <https://www.apprenticeships.gov.uk/>
- <https://www.instituteforapprenticeships.org/apprenticeship-standards/>
- www.yorkshireapprenticeshipservice.co.uk



Any questions?

Thank you for participating

