

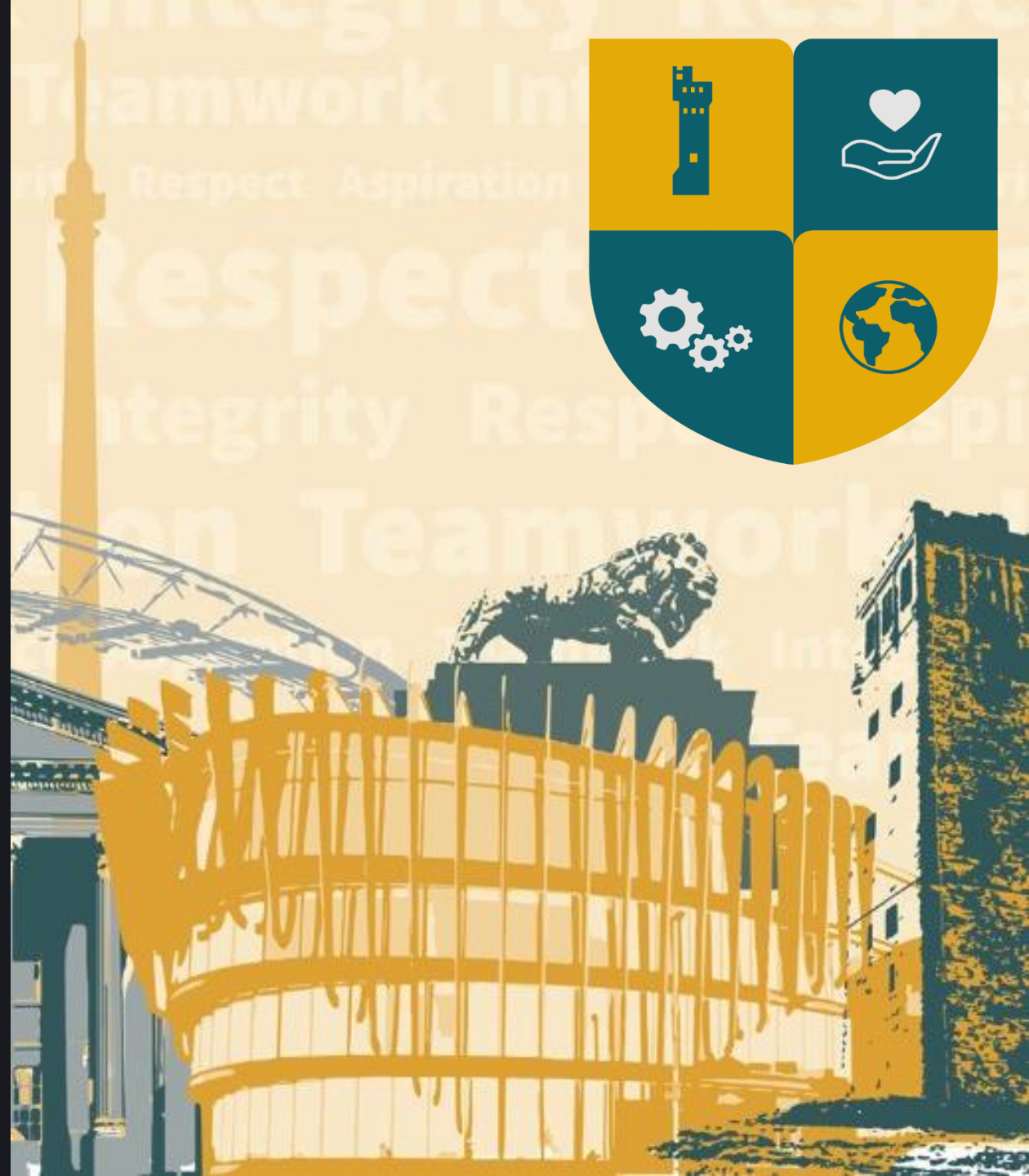


# FAMILY NEWS WEEKLY UPDATE

*Exceptional*



SCHOOL/STUDENT COMMUNICATION  
HOME/SCHOOL COMMUNICATION





# MESSAGES

# HOME



Families should regularly visit our website on the link above.

Our Families Contact Us

Admissions & Transitions

Term Dates Calendar

News & Letters

ParentPay

School Uniform

School Lunches

School Day

# NEWSOME FAMILY UPDATE



Newsome Academy

## COMMUNITY MEMO: RED NOSE DAY MEMO SENT: 14TH MARCH 2025

RED Nose Day  
14<sup>th</sup> March 2025

Dear Parents and Carers,

We would like to inform you that we are holding a Non-Uniform Day on Friday 21<sup>st</sup> of March 2025 for the whole school.

Students are invited to come in their choice of clothing in return for a small donation of £1 to Comic Relief. The donations will be **cash only throughout the week**, so please send your child in with their £1 donation from Monday to Friday.

There will be a range of fund-raising activities in school throughout the whole week, these will also be **cash only**. Activities will cost no more than 50p with the only exception being the bake sale, where some items may cost up to £1. So, if you think your child would like to join in with the events, they may bring in money (change preferred).

Below is a timetable of activities for the week. This will allow you to decide in advance whether to send your child into school with cash to take part in these activities. All activities will take place over KS3 and KS4 lunch times apart from the 80's Arcade, which will take place over break and lunch in the library.

The aim of the non-uniform day is to raise awareness and funds to support the National RED NOSE DAY appeal. As always, your continued support is very much appreciated.



## EVALUATION IMPACT REPORT

SCHOOL/COLLEGE

NEWSOME ACADEMY

PROGRAMME

NATWEST - START LOCAL, THINK LOCAL

YEAR GROUP

YEAR 9

DATE

12TH MARCH 2025

96% RATED THE ACTIVITY  
EXCELLENT OR GOOD!

100% ARE NOW MORE AWARE OF THE  
SKILLS THAT EMPLOYERS ARE  
LOOKING FOR.

100% STATED THAT THE CHALLENGE  
HELPED THEM TO UNDERSTAND  
SKILLS REQUIRED FOR THE WORKPLACE.

96% FELT THE CHALLENGE HELPED THEM TO  
RECOGNISE THEIR OWN TALENTS AND STRENGTHS.



Newsome Academy

## COMMUNITY MEMO: UNIFORM UPDATE & INFORMATION MEMO SENT: FEBRUARY 2025

We have made some minor changes to our Expectations policy ([click here](#)), in particular uniform expectations. They are as follows:

- Religious headwear is welcomed as part of our uniform. However, it must not impede on the school badge, tie or the students face. It must be black, in keeping with our professional attire.
- If the student does not have the relevant PE kit for any reason, a plain black t-shirt will be acceptable to take part. The student must bring a note from home stating why they do not have correct kit.
- After a successful trial this week, we will be moving all our behaviour reporting and monitoring system from ClassCharts to Bromcom as of Monday 3rd March. This will now enable us and yourselves to access all attendance and behaviour data in one place.
- In order for you to have full access to all attendance and behaviour data for your child, you will need the My Child At School App.
- All future correspondence will be sent via the My Child At School app therefore it is essential you have this to keep up to date with any Academy information. [Click here](#) for the previously sent information.



# MESSAGES

# HOME



Families should regularly visit our website on the link above.

Our Families Contact Us

Admissions & Transitions

Term Dates Calendar

News & Letters

ParentPay

School Uniform

School Lunches

School Day

# NEWSOME FAMILY UPDATE



Newsome Academy

## COMMUNITY MEMO: YEAR 10 GCSE NEED-TO-KNOWS 12TH FEBRUARY 2025

To all Year 10 Families

Mr Watkin is holding weekly Seminars to prepare your child for their GCSEs and they have been told that their families will hear more and more from him directly.

In a Seminar this Tuesday, there was an alarming number of children that didn't know what Examination Board they follow. This should not be the case as they have been told on numerous occasions. In order to prepare them fully, I ask the following.

- All families should 'test' their child on an evening to get them into the mindset of fully understanding their courses of study to be fully informed, engaged and ready for their GCSEs. Please refer to the list on the next page.

Let us work together in instilling academic buy-in to have the best chances of success.

Happy testing!

Mr Watkin



Newsome Academy



### Y11 ACHIEVEMENT EVENING & MOCK RESULT ISSUING

IMPORTANT SESSION FOR Y11 STUDENTS & FAMILIES REGARDING GCSE SUCCESS

TUESDAY 1ST APRIL (6PM-7PM)

## COMMUNITY MEMO: YEAR 11 MARCH ACHIEVEMENT EVENING MEMO SENT: 26TH FEBRUARY 2025

Dear Year 11 Families

- Year 11 students will be undertaking their second Mock Examinations starting on 3rd March. Your child is very aware of these, and their Teachers have been working tirelessly to prepare them for these. These important exams will further inform the groups, level of paper and overall progress in readiness for summer and indeed their future post 16 pathways. Please help us further promote preparation by following the guidance below.
- In order to further promote family support, we are changing things in the way students receive their results for their Mock Exams and these will be issued on a special evening to be attended by families.
- This event will also share important information regarding preparation, revision and information about the summer GCSE Examinations.
- The event will take place on Tuesday 1st April, 6pm – 7pm and we look forward to seeing all Year 11 students and families at this important session to support GCSE achievement.





# MESSAGES

# HOME



Families should regularly visit our website on the link above.

Our Families ▼ Contact Us

Admissions & Transitions

Term Dates Calendar

News & Letters

ParentPay

School Uniform

School Lunches

School Day

# NEWSOME FAMILY UPDATE

	9.00 Start	9:10 P1 60m	10.10 P2 60m	11.10 Break	11.30 P3 60m	12.30 P4 60m	13.30 Lunch	P5 60m
<b>Mon</b> 3/3/2025		Combined Science Biology - Paper 1 (2 x topics) & Paper 2 (1hr 30m) Separate Biology - Paper 1 & 2 Bespoke (1hr 45m)	Extra time (20m)	To lesson	History - Paper 1 (1hr 20m)	Extra time (20m)	To lesson	
<b>Tue</b> 4/3/2025		RE- Paper 1 (1hr 45m)	Extra time (25m)	To lesson	Geography - Paper 1 (1hr 30m)	Extra time (20m)	To lesson	MFL - French - Listening (F=35m H=45)
<b>Wed</b> 5/3/2025		English - Language - Paper 1 (1hr 45m)	Extra time (25m)	To lesson	Maths - Paper 1 (1hr 30m)	Extra time (20m)	To lesson	
<b>Thur</b> 6/3/2025		English - Literature - Paper 1 (1hr 45m)	Extra time (25m)	To lesson	Business (1hr 30m)	Extra time (20m)	To lesson	
<b>Fri</b> 7/3/2025		Combined Science Chem - Paper 1 (2 x topics) & Paper 2 (1hr 30m) Separate Chem - Paper 1 & 2 Bespoke (1hr 45m)	Extra time (20m)	To lesson	Computing (1hr 30m)	Extra time (20m)	To lesson	
					MFL - French - Reading Paper (F=45m H=60)	Extra time (15m)	To lesson	
<b>Mon</b> 10/3/2025		Maths - Paper 2 (1hr 30m)	Extra time (20m)	To lesson	Geography- Paper 2 (1hr 30m)	Extra time (20m)	To lesson	
<b>Tue</b> 11/3/2025		RE - Paper 2 (1hr 45m)	Extra time (25m)	To lesson	MFL - French - Writing Paper (F = 1hr 15m H = 1hr 20m)	Extra time (18m)	To lesson	
<b>Wed</b> 12/3/2025		Combined Science Physics - Paper 1 (2 x topics) & Paper 2 (1hr 30m) Separate Physics - Paper 1 & 2 Bespoke (1hr 45m)	Extra time (20m)	To lesson	Health (1hr 30m)	Extra time (20m)	To lesson	
<b>Thur</b> 13/3/2025		History - Paper 2 (1hr 50m)	Extra time (20m)	To lesson	Food (1hr 30m)	Extra time (20m)	To lesson	
<b>Fri</b> 14/3/2025		Maths - Paper 3 (1hr 30m)	Extra time (20m)	To lesson	Geography- Paper 3 (45m)	Extra time (10m)	To lesson	
<b>Mon</b> 17/3/2025		Art (Controlled Assessment)			Art (Controlled Assessment)			Art (Controlled Assessment)
<b>Tue</b> 18/3/2025		Statistics - Paper (1hr 30m)	Extra time (20m)	To lesson				

# CALENDAR

3 WEEKS

UNTIL

NEXT

BREAK

January	February	March	April	May	June
1 We <small>New Year's Day</small>	1 Sa	2 Su	3 Mo	4 Tu	5 We
2 Th	3 Mo	4 Tu	5 We	6 Th	7 Fr
3 Fr	4 Tu	5 We	6 Th	7 Fr	8 Sa
4 Sa	5 We	6 Th	7 Fr	8 Sa	9 Su
5 Su	6 Th	7 Fr	8 Sa	9 Su	10 Mo
6 Mo	7 Fr	8 Sa	9 Su	10 Mo	11 Tu
7 Tu	8 Sa	9 Su	10 Mo	11 Tu	12 We
8 We	9 Su	10 Mo	11 Tu	12 We	13 Th
9 Th	10 Mo	11 Tu	12 We	13 Th	14 Fr
10 Fr	11 Tu	12 We	13 Th	14 Fr	15 Sa
11 Sa	12 We	13 Th	14 Fr	15 Sa	16 Su
12 Su	13 Th	14 Fr	15 Sa	16 Su	17 Mo
13 Mo	14 Fr	15 Sa	16 Su	17 Mo	18 Tu
14 Tu	15 Sa	16 Su	17 Mo	18 Tu	19 We
15 We	16 Su	17 Mo	18 Tu	19 We	20 Th
16 Th	17 Mo	18 Tu	19 We	20 Th	21 Fr
17 Fr	18 Tu	19 We	20 Th	21 Fr	22 Sa
18 Sa	19 We	20 Th	21 Fr	22 Sa	23 Su
19 Su	20 Th	21 Fr	22 Sa	23 Su	24 Mo
20 Mo	21 Fr	22 Sa	23 Su	24 Mo	25 Tu
21 Tu	22 Sa	23 Su	24 Mo	25 Tu	26 We
22 We	23 Su	24 Mo	25 Tu	26 We	27 Th
23 Th	24 Mo	25 Tu	26 We	27 Th	28 Fr
24 Fr	25 Tu	26 We	27 Th	28 Fr	29 Sa
25 Sa	26 We	27 Th	28 Fr	29 Sa	30 Su
26 Su	27 Th	28 Fr	29 Sa	30 Su	31 Mo
27 Mo	28 Fr	29 Sa	30 Su	31 Mo	
28 Tu					
29 We					
30 Th					
31 Fr					

Y11 MOCK EXAMS

Y7-10 YEAR END EXAMS

Y11 REAL EXAMS

WE ARE HERE

GCSEs START 12TH MAY  
GCSE results day in 2025 is Thursday, August 21 when you collect your results

# HALF-TERM EXCEPTIONAL EDUCATIONAL ORGANISATION

Facilitate your child's memory development by:

- Looking through our [Curriculum Plans](#) to see the bigger picture.
- Going through the [Study Support Pack](#) with you.
- Going through the [Knowledge Organisers](#) and testing your knowledge



SCHOOL/STUDENT COMMUNICATION  
HOME/SCHOOL COMMUNICATION

## WEEK 1 – WEEK STARTING 24TH FEBRUARY

- PRIDE IN BOOKS

MONDAY	WHOLE SCHOOL SEMINAR: ROUTINES (CHA) Y8-11 – KNIFE CRIME AWARENESS SEMINARS
TUESDAY	NRT TESTS – Y11 P1/2 (SELECTED STUDENTS ONLY)
WEDNESDAY	ROUTINE CHECK
THURSDAY	ROUTINE CHECK
FRIDAY	RAMADAN BEGINS SATURDAY 1 <sup>ST</sup> MARCH

## WEEK 2 – WEEK STARTING 3<sup>RD</sup> MARCH

- KNOWLEDGE ORGANISER CHECK

Y11 MOCKS  
WEEK 1

MONDAY	WHOLE-SCHOOL SEMINAR: RAMADAN (KST) (IN TEAMS)
TUESDAY	CAREERS WEEK
WEDNESDAY	CAREERS WEEK
THURSDAY	WORLD BOOK DAY
FRIDAY	SPIN EVENT – BIGGEST EVER FOOTBALL DAY

## WEEK 3 – WEEK STARTING 10<sup>TH</sup> MARCH

- EXCEPTIONAL ROUTINES

Y11 MOCKS  
WEEK 2

MONDAY	WHOLE SCHOOL SEMINAR: NO LABELS (AHA) (IN TEAMS) THE BIG SING BRITISH SCIENCE WEEK – CHANGE AND ADAPT
TUESDAY	SPIN EVENT – YEAR 2 MULTI-SKILLS
WEDNESDAY	Y9 NATIONAL CAREERS CHALLENGE
THURSDAY	SPIN EVENT – AIM ACADEMY
FRIDAY	ROUTINE CHECK

## WEEK 4 – WEEK STARTING 17<sup>TH</sup> MARCH

Y11 MOCKS  
WEEK 3

MONDAY	WHOLE SCHOOL SEMINAR: RED NOSE DAY (KST/SMI)
TUESDAY	ROUTINE CHECK
WEDNESDAY	ROUTINE CHECK
THURSDAY	SPIN EVENT – U11 NETBALL TOURNAMENT
FRIDAY	COMIC RELIEF & WORLD MATHS DAY on Sunday

WE  
ARE  
HERE

## WEEK 5 – WEEK STARTING 24<sup>TH</sup> MARCH

- EXCEPTIONAL PRIDE IN BOOKS

MONDAY	WHOLE SCHOOL SEMINAR: EASTER (SBE)
TUESDAY	YEAR 11 ACHIEVEMENT EVENING
WEDNESDAY	ROUTINE CHECK
THURSDAY	YEAR 8 PROGRESS EVENING YEAR 11 GCSE EVENING
FRIDAY	EID – SUNDAY 30TH/MONDAY 31ST

## WEEK 6 – WEEK STARTING 31<sup>ST</sup> MARCH

	MONDAY	WHOLE SCHOOL SEMINAR: STAY SAFE AT EASTER (AHA)
	TUESDAY	ROUTINE CHECK
	WEDNESDAY	ROUTINE CHECK
	THURSDAY	ROUTINE CHECK
	FRIDAY	DC2 REPORTS SENT HOME





# WE OFFER A RANGE OF CLUBS FOR FUN AND LEARNING THAT STUDENTS CAN TAKE ADVANTAGE OF...

## Extra-Curricular Activities: Spring Term 2 24/25 (3-4pm)


DAY	CLUB	LOCATION	STAFF	P6 Wk A	P6 Wk B
MONDAY	<ol style="list-style-type: none"> <li>Netball - Y7 – 10</li> <li>Homework Club</li> <li>Cooking Club</li> <li>DOFE</li> <li>Algebra L3 Drop In – yr10 invite only</li> </ol>	<ol style="list-style-type: none"> <li>Sportshall/Astro</li> <li>608</li> <li>602</li> <li>402</li> <li>407</li> </ol>	<ol style="list-style-type: none"> <li>HRA/MHO</li> <li>DTU</li> <li>GCO</li> <li>GEA/JDA</li> <li>MAS</li> </ol>	MFL BUSINESS	HISTORY GEOGRAPHY
TUESDAY	<ol style="list-style-type: none"> <li>Wheelchair Basketball – Invite only</li> </ol>	<ol style="list-style-type: none"> <li>Sports hall</li> </ol>	<ol style="list-style-type: none"> <li>SCU</li> </ol>	ENGLISH	ENGLISH
WEDNESDAY	<ol style="list-style-type: none"> <li>Homework Club</li> <li>Girls Football</li> <li>Choir</li> <li>Cricket Nets</li> <li>BSL Club</li> <li>Computing Club</li> </ol>	<ol style="list-style-type: none"> <li>608</li> <li>Astro</li> <li>402</li> <li>Sports hall</li> <li>803</li> <li>608</li> </ol>	<ol style="list-style-type: none"> <li>DTU</li> <li>External/HHI</li> <li>ECO</li> <li>JDA</li> <li>DCR</li> <li>OMO</li> </ol>	MATHS	MATHS
THURSDAY	<ol style="list-style-type: none"> <li>GCSE Art – KS4 only</li> <li>Homework Club</li> <li>Trampolineing</li> <li>Music Club</li> <li>Cheerleading</li> <li>Sparx Club</li> <li>Photography Support Yr 10 ONLY</li> </ol>	<ol style="list-style-type: none"> <li>609</li> <li>60</li> <li>Gym</li> <li>402</li> <li>Dance Studio</li> <li>406</li> <li>601</li> </ol>	<ol style="list-style-type: none"> <li>LSN</li> <li>NMA</li> <li>JDA/GEA/HR</li> <li>AMC</li> <li>SMT</li> <li>EBU</li> <li>AME</li> </ol>	SCIENCE	SCIENCE
FRIDAY	<ol style="list-style-type: none"> <li>Creative Club- RM, Textiles, Art</li> <li>Badminton</li> <li>Climbing</li> </ol>	<ol style="list-style-type: none"> <li>607</li> <li>Sports hall</li> <li>Gym</li> </ol>	<ol style="list-style-type: none"> <li>AME/LMA</li> <li>HRA</li> <li>LST</li> </ol>	OPTION C	OPTION B



# EXTRA CURRICULAR CLUBS

## 3PM-4PM





Independent learning will be set as per the timetable below for each year group to ensure it is spread out across the week. Failure to complete homework to an acceptable standard will be recorded on ClassCharts.

	Monday	Tuesday	Wednesday	Thursday	Friday
Year 7*	7NEW MFL	English	Science	Maths	7SOM MFL
Year 8*	8NEW MFL	8SOM MFL	Maths	English	Science
Year 9*	MFL	Science	English		Maths
Year 10	English Option C	Maths	MFL Option D	Science	Hums
Year 11	Maths	MFL Option D	English	Hums Option C	Science


- Due to A/B Week timetables, classes in Years 7-9 will receive Hums and VTC homework at different times each week.



## HOMEWORK CALENDAR







Here is a reminder of the resources that are on offer to you whilst learning at home. Students are lucky enough to get above and beyond that of most schools and it's important these are taken advantage of for success.

### KEY STAGE 3 (YEARS 7,8,9)

#### **KNOWLEDGE ORGANISERS**

This is broken down per each half term and contain content and questions to work from home on.

#### **HOMEWORK SCHEDULE**

This supports time management at home and a guide for Teachers so work issuing is not given all in one go.

### KEY STAGE 4 (YEARS 10& 11)

#### **EXAM BOARD LIST**

The list on the previous page offers guidance of the vast range of online resources such as past papers etc. This should be used as a guide.

#### **REVISION GUIDES**

ALL students have/will been given **FREE** guides which they should have at home. There's no excuses for loss

### WIDER SUPPORT

ADDITIONAL SOFTWARE LINKS | WELLBEING APPS | INDEPENDENT STUDY GUIDES



# HOME LEARNING





**Newsome  
Academy**



Attendance Matters		
100%	0 DAYS	0 LESSONS MISSED
99%	1 DAY	5 LESSONS MISSED
98%	3 DAYS	15 LESSONS MISSED
97%	1 WEEK	25 LESSONS MISSED
96%	1.5 WEEKS	35 LESSONS MISSED
94%	2 WEEKS	50 LESSONS MISSED
93%	2.5 WEEKS	65 LESSONS MISSED
92%	3 WEEKS	75 LESSONS MISSED
90%	3.5 WEEKS	90 LESSONS MISSED

Current Whole school to date = 93.5%

**WEEKLY WINNERS!!!!**

**Year 7 – CRI 98.4%**

**Year 8 – EBU 97%**

**Year 9 – IPA 97.6%**

**Year 10- AME 98.4%**

**Year 11- CHI 95.3%**

**BEST Year group = Year 9 94.21%**



# THIS WEEK'S SEMINAR



Red Nose Day

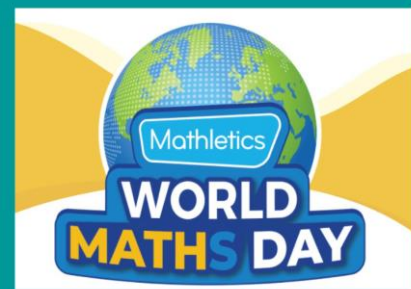


**RED  
NOSE  
DAY**

**FUNNY  
IS POWER**

# COMIC RELIEF TURNS 40 2025

17<sup>th</sup> 19<sup>th</sup> 21<sup>st</sup> March



26<sup>th</sup> March 2025

RED  
NOSE  
DAY

FUNNY  
IS POWER

## Where does Comic Relief come from?

Comic Relief is a British charity, founded in 1985 by the comedy scriptwriter Richard Curtis and comedian Sir Lenny Henry, in response to the 1983-1985 famine in Ethiopia.

## What is comic relief?

Watch the video to find out  
Bing Videos



## Why a red nose

The reason we support the squishy red accessories is all because of the founders of Comic Relief - Sir Lenny Henry and Richard Curtis.

When they were in the process of creating Comic Relief, they were on the hunt for a bold and fun charity symbol that everyone could wear.

Someone in the meeting joked: 'What about a Red Nose?' and the rest is history.

The whole message of Comic Relief is raising money through comedy, so the organisers had to pick something that related to that and would attract public attention to raise the most money for charity.

[A blast from the past! Meet the Red Noses | Red Nose Day 2025](#)



## 40 years of helping people

For 40 years Comic Relief have helped people, and several causes the main ones being:

- Homelessness
- food banks, clothing banks
- Kinship carers
- Circus Zambia
- Poverty
- Projects for music and sport



For 40 years people have been fundraising and getting creative to raise money for Comic Relief and this year the theme is 40 years of funny.

Amelia Dimoldenberg meets Joanna Lumley | Red Nose Day 2025

## Where does your money go?

Comic Relief has helped over 10 million people in the last few years; here are just a few statistics of people they have helped:

- 1.5 million people getting access to education
- 1.5 million people getting the mental health support they need
  - 150K people getting access to safe accommodation
  - 2.6 million affected by the cost-of-living crisis
- 2.3 million people getting access to clean water and a nutritional diet

## Where does the money go?

Let's look at how Comic Relief have helped people over the 40 years!

Ed Sheeran Meets a Little Boy who Lives on Streets

Meet Ethan | Red Nose Day 2021

Olivia Colman introduces Burhan's Story | Red Nose Day 2022



## Do your bit!

As Comic Relief turns 40 this year, Newsome Academy have chosen to celebrate it over three days:

**Monday the 17<sup>th</sup> Wednesday the 19<sup>th</sup> and Friday the 21<sup>st</sup> of March** with events such as:

- Bake sales **Monday lunchtimes**
- Guessing the number of sweets in a jar **Monday, Wednesday, Friday**
- Penalty shoot-out **Wednesday**
- 80's arcade **Monday**
- Staff in the stocks - everyone's favourite! **Friday**
- 21<sup>st</sup> March non uniform day **Friday**

All you need to do is bring some money and have some fun!

RED  
NOSE  
DAY

FUNNY  
IS POWER

