



FAMILY NEWS WEEKLY UPDATE

Exceptional



SCHOOL/STUDENT COMMUNICATION
HOME/SCHOOL COMMUNICATION



MESSAGES HOME



Families should regularly visit our website on the link above.

Our Families Contact Us

Admissions & Transitions

Term Dates Calendar

News & Letters

ParentPay

School Uniform

School Lunches

School Day

NEWSOME FAMILY UPDATE




COMMUNITY MEMO: YEAR 11 MARCH ACHIEVEMENT EVENING
MEMO SENT: 26TH FEBRUARY 2025

Dear Year 11 Families

- Year 11 students will be undertaking their second Mock Examinations starting on 3rd March. Your child is very aware of these, and their Teachers have been working tirelessly to prepare them for these. These important exams will further inform the groups, level of paper and overall progress in readiness for summer and indeed their future post 16 pathways. Please help us further promote preparation by following the guidance below.
- In order to further promote family support, we are changing things in the way students receive their results for their Mock Exams and these will be issued on a special evening to be attended by families.
- This event will also share important information regarding preparation, revision and information about the summer GCSE Examinations.
- The event will take place on Tuesday 1st April, 6pm – 7pm and we look forward to seeing all Year 11 students and families at this important session to support GCSE achievement.






COMMUNITY MEMO: UNIFORM UPDATE & INFORMATION
MEMO SENT: FEBRUARY 2025

We have made some minor changes to our Expectations policy ([click here](#)), in particular uniform expectations. They are as follows:

- Religious headwear is welcomed as part of our uniform. However, it must not impede on the school badge, tie or the students face. It must be black, in keeping with our professional attire.
- If the student does not have the relevant PE kit for any reason, a plain black t-shirt will be acceptable to take part. The student must bring a note from home stating why they do not have correct kit.
- After a successful trial this week, we will be moving all our behaviour reporting and monitoring system from ClassCharts to Bromcom as of Monday 3rd March. This will now enable us and yourselves to access all attendance and behaviour data in one place.
- In order for you to have full access to all attendance and behaviour data for your child, you will need the My Child At School App.
- All future correspondence will be sent via the My Child At School app therefore it is essential you have this to keep up to date with any Academy information. [Click here](#) for the previously sent information.



CALENDAR

Y11 MOCK EXAMS

Y7-10 YEAR END EXAMS

Y11 REAL EXAMS

WE ARE HERE

January	February	March	April	May	June
1 We <small>New Year's Day</small>	1 Sa	2 Su	3 Mo	4 Tu	5 We
2 Th	3 Mo	4 Tu	5 We	6 Th	7 Fr
3 Fr	4 Tu	5 We	6 Th	7 Fr	8 Sa
4 Sa	5 We	6 Th	7 Fr	8 Sa	9 Mo
5 Su	6 Th	7 Fr	8 Sa	9 Mo	10 Tu
6 Mo	7 Fr	8 Sa	9 Mo	10 Tu	11 We
7 Tu	8 Sa	9 Mo	10 Tu	11 We	12 Th
8 We	9 Su	10 Mo	11 Tu	12 We	13 Th
9 Th	10 Mo	11 Tu	12 We	13 Th	14 Fr
10 Fr	11 Tu	12 We	13 Th	14 Fr	15 Sa
11 Sa	13 Th	14 Fr	15 Sa	16 Su	17 Mo
12 Su	14 Fr	15 Sa	16 Su	17 Mo	18 Tu
13 Mo	15 Sa	16 Su	17 Mo	18 Tu	19 We
14 Tu	16 Su	17 Mo	18 Tu	19 We	20 Th
15 We	17 Mo	18 Tu	19 We	20 Th	21 Fr
16 Th	18 Tu	19 We	20 Th	21 Fr	22 Sa
17 Fr	19 We	20 Th	21 Fr	22 Sa	23 Su
18 Sa	20 Th	21 Fr	22 Sa	23 Su	24 Mo
19 Su	21 Fr	22 Sa	23 Su	24 Mo	25 Tu
20 Mo	22 Sa	23 Su	24 Mo	25 Tu	26 We
21 Tu	23 Su	24 Mo	25 Tu	26 We	27 Th
22 We	24 Mo	25 Tu	26 We	27 Th	28 Fr
23 Th	25 Tu	26 We	27 Th	28 Fr	29 Sa
24 Fr	26 We	27 Th	28 Fr	29 Sa	30 Su
25 Sa	27 Th	28 Fr	29 Sa	30 Su	31 Mo
26 Su	28 Fr	29 Sa	30 Su	31 Mo	
27 Mo					
28 Tu					
29 We					
30 Th					
31 Fr					

2 WEEKS

UNTIL

NEXT

BREAK

GCSEs START 12TH MAY

GCSE results day in 2025 is Thursday, August 21 when you collect your results

HALF-TERM EXCEPTIONAL EDUCATIONAL ORGANISATION

Facilitate your child's memory development by:

- Looking through our [Curriculum Plans](#) to see the bigger picture.
- Going through the [Study Support Pack](#) with you.
- Going through the [Knowledge Organisers](#) and testing your knowledge



SCHOOL/STUDENT COMMUNICATION
HOME/SCHOOL COMMUNICATION

WEEK 1 – WEEK STARTING 24TH FEBRUARY

- PRIDE IN BOOKS

MONDAY	WHOLE SCHOOL SEMINAR: ROUTINES (CHA) Y8-11 – KNIFE CRIME AWARENESS SEMINARS
TUESDAY	NRT TESTS – Y11 P1/2 (SELECTED STUDENTS ONLY)
WEDNESDAY	ROUTINE CHECK
THURSDAY	ROUTINE CHECK
FRIDAY	RAMADAN BEGINS SATURDAY 1 ST MARCH

WEEK 2 – WEEK STARTING 3RD MARCH

- KNOWLEDGE ORGANISER CHECK

Y11 MOCKS
WEEK 1

MONDAY	WHOLE-SCHOOL SEMINAR: RAMADAN (KST) (IN TEAMS)
TUESDAY	CAREERS WEEK
WEDNESDAY	CAREERS WEEK
THURSDAY	WORLD BOOK DAY
FRIDAY	SPIN EVENT – BIGGEST EVER FOOTBALL DAY

WEEK 3 – WEEK STARTING 10TH MARCH

- EXCEPTIONAL ROUTINES

Y11 MOCKS
WEEK 2

MONDAY	WHOLE SCHOOL SEMINAR: NO LABELS (AHA) (IN TEAMS) THE BIG SING BRITISH SCIENCE WEEK – CHANGE AND ADAPT
TUESDAY	SPIN EVENT – YEAR 2 MULTI-SKILLS
WEDNESDAY	Y9 NATIONAL CAREERS CHALLENGE
THURSDAY	SPIN EVENT – AIM ACADEMY
FRIDAY	ROUTINE CHECK

WEEK 4 – WEEK STARTING 17TH MARCH

Y11 MOCKS
WEEK 3

MONDAY	WHOLE SCHOOL SEMINAR: RED NOSE DAY (KST/SMI)
TUESDAY	ROUTINE CHECK
WEDNESDAY	ROUTINE CHECK
THURSDAY	SPIN EVENT – U11 NETBALL TOURNAMENT
FRIDAY	COMIC RELIEF & WORLD MATHS DAY on Sunday

WEEK 5 – WEEK STARTING 24TH MARCH

- EXCEPTIONAL PRIDE IN BOOKS

WE
ARE
HERE

MONDAY	WHOLE SCHOOL SEMINAR: EASTER (SBE)
TUESDAY	YEAR 9 IMMUNISATIONS
WEDNESDAY	ROUTINE CHECK
THURSDAY	YEAR 8 PROGRESS EVENING
FRIDAY	EID – SUNDAY 30 TH /MONDAY 31 ST

WEEK 6 – WEEK STARTING 31ST MARCH

MONDAY	WHOLE SCHOOL SEMINAR: STAY SAFE AT EASTER (AHA)
TUESDAY	ROUTINE CHECK YEAR 11 GCSE EVENING
WEDNESDAY	ROUTINE CHECK
THURSDAY	ROUTINE CHECK
FRIDAY	DC2 REPORTS SENT HOME



WE OFFER A RANGE OF CLUBS FOR FUN AND LEARNING THAT STUDENTS CAN TAKE ADVANTAGE OF...

Extra-Curricular Activities: Spring Term 2 24/25 (3-4pm)

DAY	CLUB	LOCATION	STAFF	P6 Wk A	P6 Wk B
MONDAY	<ol style="list-style-type: none"> 1. Netball - Y7 – 10 2. Homework Club 3. Cooking Club 4. DOFE 5. Algebra L3 Drop In – yr10 invite only 	<ol style="list-style-type: none"> 1. Sportshall/Astro 2. 608 3. 602 4. 402 5. 407 	<ol style="list-style-type: none"> 1. HRA/MHO 2. DTU 3. GCO 4. GEA/JDA 5. MAS 	MFL BUSINESS	HISTORY GEOGRAPHY
TUESDAY	<ol style="list-style-type: none"> 1. Wheelchair Basketball – Invite only 	<ol style="list-style-type: none"> 1. Sports hall 	<ol style="list-style-type: none"> 1. SCU 	ENGLISH	ENGLISH
WEDNESDAY	<ol style="list-style-type: none"> 1. Homework Club 2. Girls Football 3. Choir 4. Cricket Nets 5. BSL Club 6. Computing Club 	<ol style="list-style-type: none"> 1. 608 2. Astro 3. 402 4. Sports hall 5. 803 6. 608 	<ol style="list-style-type: none"> 1. DTU 2. External/HHI 3. ECO 4. JDA 5. DCR 6. OMO 	MATHS	MATHS
THURSDAY	<ol style="list-style-type: none"> 1. GCSE Art – KS4 only 2. Homework Club 3. Trampolineing 4. Music Club 5. Cheerleading 6. Sparx Club 7. Photography Support Yr 10 ONLY 	<ol style="list-style-type: none"> 1. 609 2. 60 3. Gym 4. 402 5. Dance Studio 6. 406 7. 601 	<ol style="list-style-type: none"> 1. LSN 2. NMA 3. JDA/GEA/HR 4. AMC 5. SMT 6. EBU 7. AME 	SCIENCE	SCIENCE
FRIDAY	<ol style="list-style-type: none"> 1. Creative Club- RM, Textiles, Art 2. Badminton 3. Climbing 	<ol style="list-style-type: none"> 1. 607 2. Sports hall 3. Gym 	<ol style="list-style-type: none"> 1. AME/LMA 2. HRA 3. LST 	OPTION C	OPTION B



EXTRA CURRICULAR CLUBS

3PM-4PM





Independent learning will be set as per the timetable below for each year group to ensure it is spread out across the week. Failure to complete homework to an acceptable standard will be recorded on ClassCharts.


	Monday	Tuesday	Wednesday	Thursday	Friday
Year 7*	7NEW MFL	English	Science	Maths	7SOM MFL
Year 8*	8NEW MFL	8SOM MFL	Maths	English	Science
Year 9*	MFL	Science	English		Maths
Year 10	English Option C	Maths	MFL Option D	Science	Hums
Year 11	Maths	MFL Option D	English	Hums Option C	Science

- Due to A/B Week timetables, classes in Years 7-9 will receive Hums and VTC homework at different times each week.



HOMEWORK CALENDAR





Here is a reminder of the resources that are on offer to you whilst learning at home. Students are lucky enough to get above and beyond that of most schools and it's important these are taken advantage of for success.

KEY STAGE 3 (YEARS 7,8,9)

KNOWLEDGE ORGANISERS

This is broken down per each half term and contain content and questions to work from home on.

HOMEWORK SCHEDULE

This supports time management at home and a guide for Teachers so work issuing is not given all in one go.

KEY STAGE 4 (YEARS 10& 11)

EXAM BOARD LIST

The list on the previous page offers guidance of the vast range of online resources such as past papers etc. This should be used as a guide.

REVISION GUIDES

ALL students have/will been given **FREE** guides which they should have at home. There's no excuses for loss

WIDER SUPPORT

ADDITIONAL SOFTWARE LINKS | WELLBEING APPS | INDEPENDENT STUDY GUIDES



HOME LEARNING





**Newsome
Academy**



Attendance Matters		
100%	0 DAYS	0 LESSONS MISSED
99%	1 DAY	5 LESSONS MISSED
98%	3 DAYS	15 LESSONS MISSED
97%	1 WEEK	25 LESSONS MISSED
96%	1.5 WEEKS	35 LESSONS MISSED
94%	2 WEEKS	50 LESSONS MISSED
93%	2.5 WEEKS	65 LESSONS MISSED
92%	3 WEEKS	75 LESSONS MISSED
90%	3.5 WEEKS	90 LESSONS MISSED

Current Whole school to date = 93.5%

WEEKLY WINNERS!!!!

Year 7 – KH0 99.33%

Year 8 – EBU 97.50%

Year 9 – CBR 98.39%

Year 10- AME 97.60%

Year 11- CHI 95.77%

BEST Year group = Year 9 95.39%



THIS WEEK'S SEMINAR



Easter Celebrations



What do you know about Easter?



And why is it relevant to you and your studies?



Easter Quiz

- Which religion celebrates Easter?
- What do we eat on Shrove Tuesday and why?
- What starts on Ash Wednesday?
- What happened on Palm Sunday?



Easter is a Christian Celebration, with lots of traditions



Shrove Tuesday



Ash Wednesday



Palm Sunday



Easter Quiz

- What does Maundy Thursday remind of us?
- What happened on Good Friday?
- What did Jesus do on Easter Sunday?
- Why is Easter Monday a Bank Holiday?
- What is Ascension Day?

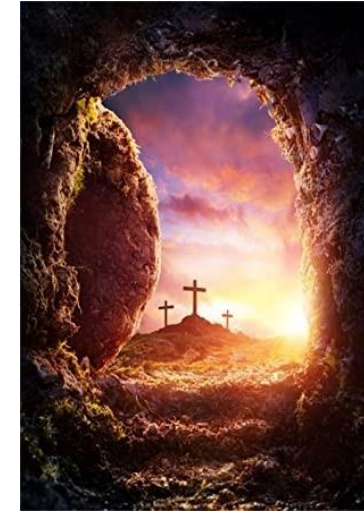


Holy Thursday

Maundy
Thursday



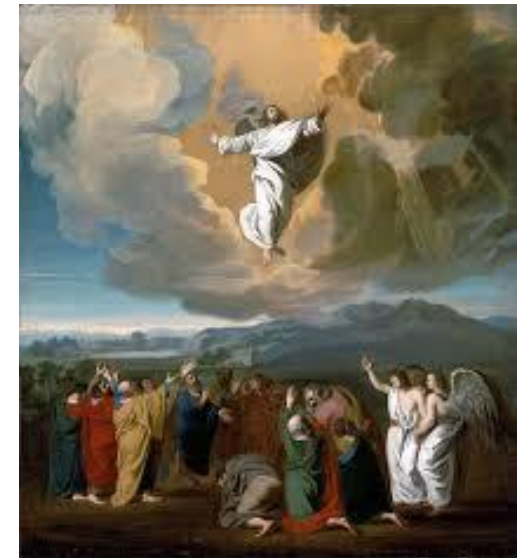
Good Friday



Easter Sunday



Easter Monday



Ascension Day





So why do we have Easter Eggs and what has the Easter Bunny have to do with this Christian Celebration?

The Easter bunny and Easter eggs originated as pagan symbols of **spring** and **rebirth**