

**YOUR CHILD'S
SCHOOL IS THEIR
SECOND FAMILY...**

welcome
HOME

OPEN EVENING
INITIAL INFORMATION



Prospective Families

Whether your child is in Year 6 and you are deciding on their secondary school for next year, or they are in Year 5 and you want to make the very best decision on their secondary school, please come to our upcoming Open Evening on Tuesday 23rd September.

We are celebrating another **record-breaking year of achievement** with better than national benchmarks for a range of areas. Since Ofsted recognised our amazing school 2 years ago, we have also been recognised for outstanding practice for:

- **Special Needs Provision.**
- **Oracy.**
- **Progression.**
- **Attendance.**
- **Excellence in Pupil Development.**



We continue to go from strength to strength with more families choosing us to secure their child's successful future each year. Places fill up quickly so be ahead of the game!

Whilst any school can give a great 'sales pitch', we at Newsome can't stress enough the importance of coming to get a true feel of our caring family and different approach to secondary learning. No pitch – just reality! Please come and join us on Tuesday 23rd September 4pm-6pm.

NEWSOME ACADEMY OPEN EVENING
TUESDAY 23RD SEPTEMBER – 4:00–6:00



YOUR CHILD'S SCHOOL IS
THEIR SECOND FAMILY...
WELCOME HOME.



STUDENT PRESENTATIONS HEADTEACHER TALKS ACADEMY TOURS

TUESDAY 23RD SEPTEMBER - 4:00-6:00

Officially rated
'Good' with
'Outstanding'
features

Ofsted
Good
Provider



**COME & SEE OUR AWESOME ACADEMY TO
GET A FEEL FOR WHAT IT IS LIKE TO BE
PART OF A 'CARING, CLOSE-KNIT FAMILY.'**





TRANSITION GUIDANCE 2025-2026



**Newsome
Academy**



Questions you may be asking

1. Does this school have the 'vibe' I want for my child?
2. What are the staff like?
3. Who will keep my child safe?
4. Who will support my child's development?
5. How will they learn?
6. Does this school care for me as well as my child?



Our Trust: Our Family



Our family of academies work collaboratively to create a trust Where Hearts & Minds Connect with value-driven partners to ensure education impacts positively on students, staff and communities we serve.

[**CLICK HERE**](#)

TO SEE OUR ACADEMY PROMO VIDEO...

GCSE RESULTS PRESS RELEASE

ACADEMIC YEAR 2025 – KEY CELEBRATION HEADLINES FOR OUR COMMUNITY

Newsome Academy is pleased to report another RECORD-BREAKING YEAR with some fantastic achievements by our amazing students in their GCSEs and other qualifications this summer. This year, we achieved our highest ever number of students reaching grade 5 and above – an 8% increase on last year.

We usually publish individuals but not all have opened their results and are waiting to celebrate with their families so I will publish this in another statement when we return.

- There were **119 grade 7's** and above achieved this year with some breath-taking highest achievers of all time in our history.
- There were a total of **17 grade 9's, 39 grade 8's** and **63 grade 7's** achieved.

Here are some highlights from this year - as not all students may have collected their results or shared them with others yet, we have generalised some of the special mentions below:

- **14 students achieved multiple Grade 9s with one student achieving a total of 8 grade 9s across all subjects**, reflecting exceptional academic performance and consistent excellence across a range of subjects.
- The **Health and Fitness programme** has been a great success, with *7 students achieving a Distinction (star)** – a fantastic result that reflects dedication both in practical and written elements of the course.
- This year, an outstanding **8 Grade 9s were achieved across a range of languages**, reflecting exceptional skill, dedication, and cultural understanding.

Additionally, our post 16 alumni have also excelled, with students going on to achieve top A level results and progressing to prestigious universities including **King's College London** and **Queen's University Belfast**. Our students go on and succeed!











Overall, students have demonstrated resilience and maturity, and this has been personally heartwarming to watch as Headteacher. Another needed mention is the tremendous support and care that our families offer their child - having worked in 5 secondary schools, Newsome families stand out by far and I congratulate you on the effort and lengths taken to ensure the right support and challenge that you have offered your child through the exam season. It is only by working together that we can make the biggest and most positive difference in our children's lives, and we certainly have that within our community.

A special mention also needs to go out to our dedicated staff - teaching and non-teaching. I have witnessed relentless time, passion and dedication by them to ensure your child has had every opportunity to prepare for their exams. Whether it be in the classroom, pastorally or the administration offices, they have worked tirelessly to ensure students are all able to progress onto further education and study, and we look forward to seeing what they will achieve in the future.

HUGE CONGRATULATIONS TO YOU ALL – WE ARE VERY PROUD OF YOU!



**Newsome
Academy**

INCLUSION AT THE HEART & MIND	
 Newsome Academy	 Mainstream secondary school providing for significantly above national in PP, SEND & disadvantaged.
 Southgate A Nurture School <small>Relationships Independence Empathy Communication</small>	 Satellite Campus for Southgate Special School for 20 students. Tailored provision to access mainstream elements.
 RISE MAINSTREAM	 Mainstream Secondary provision for high need. Taught by Primary specialists and a hybrid learning approach.
 HEARING ARP	 Mainstream Secondary provision for Physically Impaired need. Access to mainstream provision with additional access to equipped provision.
 PHYSICAL ARP	 Mainstream Secondary provision for Hearing Impaired need. Access to mainstream provision with additional access to equipped provision.

**A SCHOOL
FOR ALL...**

**WE HAVE A
RANGE OF
PROVISIONS
WHICH
CATER FOR
GROWING
NEED.**



- **To be a pupil at this school is to be part of a caring, closeknit family.** Staff and pupils form strong relationships that underpin the school's work. Pupils are safe. They are nurtured to achieve their full potential. In the words of one pupil, echoing the sentiments of many, 'We belong here.'
- **Pupils respond admirably to the high expectations that staff have of them. They are happy, enjoy learning and achieve well.** Teachers support pupils very well. Pupils learn a curriculum which is constructed and designed to give them the best start in life.
- **Pupils' conduct at the school is exemplary and an excellent model of inclusion.** Pupils are unfailingly polite and exhibit the school's values of respect, integrity, teamwork and aspiration. Pupils are attentive in lessons and enjoy learning.
- **The school prioritises reading. Pupils are provided with many opportunities to read.** They are encouraged to read aloud in class, practise new vocabulary and develop their oracy skills. Pupils receive weekly literacy seminar sessions in which they read and discuss a text together.
- **Transformative changes to the school have been made by skilled and determined leaders.** They have a sharp understanding of the school's many strengths and remaining areas for development. Governors and trustees provide support and hold school leaders to account effectively.
- **English was a showcase department in our last Ofsted Inspection.**

IN FEBRUARY 2024, WE WERE PRAISED FOR MANY THINGS. YOU WILL BE JOINING A FANTASTIC FAMILY!

WE CONTINUE TO BE RECOGNISED FOR THE SUPPORT WE OFFER...



OUR SCHOOL HAS ACHIEVED THE

Excellence in Pupil Development Award

Developing pupil skills that last a lifetime

2025 - 2028



Accredited by OPTIMUS EDUCATION

YEAR	KEY STAGE	DIFFERENCES
Y6	KEY STAGE 2	Same Teacher Smaller school
Y7	KEY STAGE 3 <i>Larger school Multiple Teachers Subject Specialists Different classrooms</i>	Opportunity to study a range of subjects and interests. You choose your options at the end of Year 9.
Y8		
Y9		
Y10	KEY STAGE 4 <i>More adult-like learning environment</i>	You study 9 GCSEs and take your exams at the end of Year 11. Students look forward to the Prom before they leave.
Y11		
Y12	KEY STAGE 5 <i>College or Apprenticeships</i>	
Y13		



OUR SCHOOL DAY...

8:00-8:30	Dining Hall open to students - Free Business Breakfast
8:30-8:35	Students gather on the courts
8:35-8:45	Students move to line ups (Register for those in Seminars) and transition
8:45-9:10	Enrichment/Seminar
9:10 – 10:10	Period 1
10:10 – 11:10	Period 2 KS4 (Break for KS3 10:10 – 10:30)
10:30 – 11:30	Period 2 KS3 (Break for KS4 11:10-11:30)
11:30 – 12:30	Period 3
12:30 – 1:00	Year 7, 8 & 9 KS3 Lunch
12:30 – 1:30	Year 10 & 11 Period 4
1:00 – 2:00	Year 7, 8 & 9 Period 4
1:30 – 2:00	Year 10 & 11 KS4 Lunch
2:00 – 3:00	Period 5
3:00	Academy day ends
3:00 – 4:00	Enrichment time/Y11 Period 6

WE SPLIT THE DAY UP IN THE INTERESTS OF STUDENTS

STUDENTS IN EACH KEY STAGE HAVE DIFFERENT SOCIAL TIMES

A RANGE OF EXTRA-CURRICULAR CLUBS & ACTIVITIES TO TAKE ADVANTAGE OF



Blazer

Jumper

Shoes - In the interests of safety, all students are expected to wear sensible footwear on the Academy premises. Footwear must be a shoe (no more than a 1-inch heel) or plain black trainer/pump (with limited modifications). Both items must be lace up or slip on with enclosed heels and toes. There must be no visible logos or labels that are not black. The Academy will determine whether or not a student's footwear is appropriate. Appropriate footwear examples:



* The Academy reserves the right to decide on appropriate footwear.

Trousers and Skirts - Trousers must be black, sensible, modest and respectable in a loose or slim-fit style. They must be worn at the waist and have no rips or tears. **Tracksuit bottoms and/or shorts with pockets are NOT allowed to be worn under school trousers.** Jeans, leggings or jeggings are NOT acceptable. Skirts must be sensible, modest and respectable. They should be a respectable length. Appropriate trouser and skirt examples:



Summer term adaptations

During Half term 5 and 6 (and HT1 in adverse weather – this would be communicated with families) students are permitted to wear tailored or smart shorts (NOT football shorts, swim shorts, combat shorts or any shorts with logos and/or modifications) and knee length skirts without tights. During times of adverse weather students will be encouraged to remove ties, jumpers and blazers so they are comfortable. We do not want weather conditions impeding on the students learning.

PE Kit Expectations

The Kit shown below will have the school logo on. Shorts and football socks can also be worn by students but they must be plain black. In addition, students can also wear their Newsome Academy hooded sweatshirt and/or any other Newsome academy sportswear linked with the school.

Appropriate sportswear is listed below:

- Black tracksuit bottoms with the Academy logo.
- Black sports leggings with the Academy logo.
- Newsome Academy T-shirt.
- If the student does not have the relevant kit for any reason, a plain black t-shirt will be acceptable to take part. The student must bring a note from home stating why they do not have correct kit.
- Trainers. NOT pumps or shoes (for PE).



T-shirt



Tracksuit bottoms



Leggings

The kit will have the Academy logo

Similar to uniform expectations, any student not wearing appropriate PE kit will incur a sanction and will be loaned correct items for their lesson. Any loss or damage of these items by the student, will be charged to the parent/carer, payable through parent pay.



PASTORAL



YEAR 7



MS CARTER
BEHAVIOUR &
ATTENDANCE LEAD

YEAR 8



MS CROSSLAND
HEAD OF YEAR 7
ENGLISH TEAM LEADERS

YEAR 9



MS PARSONAGE
HEAD OF YEAR 9
HUMANITIES TEAM LEADERS

YEAR 10



MS FLETCHER
HEAD OF YEAR 10
VTC TEAM LEADERS

YEAR 11



MS HALLWORTH
HEAD OF YEAR 11
SCIENCE TEAM LEADERS



MR HOLMES



MS CARR

PASTORAL SUPPORT OFFICERS



MS COLDWELL
INCLUSION LEAD

SPEAK TO THE
TEAM IF YOU NEED ANY
SUPPORT.
talk@newsomeacademy.co.uk



SAFEGUARDING



**SPEAK TO THE
TEAM IF YOU NEED
ANY SUPPORT.**
talk@newsomeacademy.co.uk



MS HALL
DSL



MS BAXTER
DEPUTY DSL



MS LEROY
DEPUTY DSL



MS BROOK
WELLBEING
LEAD

**WE HAVE A
DEDICATED TEAM
TO HELP YOU IN
TIMES OF NEED!**



Mr Mitchell

Assistant Headteacher

- Manages the overall transition process.



Ms Hall

Assistant Headteacher

Inclusion & Safeguarding

- Manages Inclusion across school



Mr Blogg

SENDCo

- Managed students with Special educational needs



Ms Crossland

Head of Year 7

- Current Head of Year 7.



TRANSITION CONTACTS



Contact us on our dedicated email address if you need any support throughout this process.

Transition@newsomeacademy.co.uk



Open Evening

23rd September

- General look and feel of the Academy.



Transition Evenings

- Online drop-ins TBD
- Physical Family meeting for updates and preparation.



Transition Day

7th July

- Y6 day in school experiencing secondary school life. Evening drop-in for families.

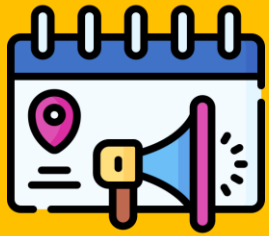


KEY TRANSITION DATES



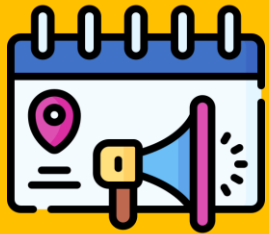
Contact us on our dedicated email address if you need any support throughout this process.

Transition@newsomeacademy.co.uk



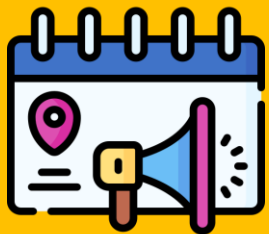
Subject Showcases

- Have a look around our spectacular school & discuss the range of subjects offered.



Subject Demonstrations

- Student guides to have a look at some class demonstrations.



Tours

- Student guides to have a look at some key areas in school.



OPEN EVENING EVENTS



Contact us on our dedicated email address if you need any support throughout this process.

Transition@newsomeacademy.co.uk



Admissions & Transitions



Term Dates Calendar



News & Letters



ParentPay




School Uniform



School Lunches

Check out our website

- [Click here](#) to see more online information on preparation for joining Newsome.
- [Check us out](#) on  to see all updates, communications and special memories made at Newsome!



MORE INFORMATION & PREPARATION



Contact us on our dedicated email address if you need any support throughout this process.

Transition@newsomeacademy.co.uk



Newsome Academy

Everyone Exceptional Everyday

***DONT
WORRY!***



**YOU'RE IN
SAFE HANDS**

