



HomeRun

YEAR 11 SEMINAR/S
WEEK STARTING 8TH SEPTEMBER 2025

HOLIDAY INSET Y6 TRANSITION



7 WEEKS
UNTIL 1 WEEK
HT BREAK

28 WEEKS
UNTIL GCSE
EXAMS START

38 WEEKS
UNTIL THE END
OF SCHOOL
YEAR

2025					2026						
August	September	October	November	December	January	February	March	April	May	June	July
1 Fr	1 Mo ³⁶	1 We	1 Sa	1 Mo ⁴⁹	1 Th ^{New Year's Day}	1 Su	1 Su	1 We	1 Fr	1 Mo ²³	1 We
2 Sa	2 Tu	2 Th	2 Su	2 Tu	2 Fr	2 Mo ⁶	2 Mo ¹⁰	2 Th	2 Sa	2 Tu	2 Th
3 Su	3 We	3 Fr	3 Mo ⁴⁵	3 We	3 Sa	3 Tu	3 Tu	3 Fr ^{Good Friday}	3 Su	3 We	3 Fr
4 Mo ³²	4 Th	4 Sa	4 Tu	4 Th	4 Su	4 We	4 We	4 Sa	4 Mo ^{Early May Bk. Hol. 19}	4 Th	4 Sa
5 Tu	5 Fr	5 Su	5 We	5 Fr	5 Mo ²	5 Th	5 Th	5 Su	5 Tu	5 Fr	5 Su
6 We	6 Sa	6 Mo ⁴¹	6 Th	6 Sa	6 Tu	6 Fr	6 Fr	6 Mo ^{Easter Monday 5}	6 We	6 Sa	6 Mo ²⁸
7 Th	7 Su	7 Tu	7 Fr	7 Su	7 We	7 Sa	7 Sa	7 Tu	7 Th	7 Su	7 Tu
8 Fr	8 Mo ³⁷	8 We	8 Sa	8 Mo ⁵⁰	8 Th	8 Su	8 Su	8 We	8 Fr	8 Mo ²⁴	8 We
9 Sa	9 Tu	9 Th	9 Su	9 Tu	9 Fr	9 Mo ⁷	9 Mo ¹¹	9 Th	9 Sa	9 Tu	9 Th
10 Su	10 We	10 Fr	10 Mo ⁴⁶	10 We	10 Sa	10 Tu	10 Tu	10 Fr	10 Su	10 We	10 Fr
11 Mo ³	11 Th	11 Sa	11 Tu	11 Th	11 Su	11 We	11 We	11 Sa	11 Mo ²⁰	11 Th	11 Sa
12 Tu	12 Fr	12 Su	12 We	12 Fr	12 Mo ³	12 Th	12 Th	12 Su	12 Tu	12 Fr	12 Su
13 We	13 Sa	13 Mo ⁴²	13 Th	13 Sa	13 Tu	13 Fr	13 Fr	13 Mo ¹⁶	13 We	13 Sa	13 Mo ²⁹
14 Th	14 Su	14 Tu	14 Fr	14 Su	14 We	14 Sa	14 Sa	14 Tu	14 Th	14 Su	14 Tu
15 Fr	15 Mo ³⁸	15 We	15 Sa	15 Mo ⁵¹	15 Th	15 Su	15 Su	15 We	15 Fr	15 Mo ²⁵	15 We
16 Sa	16 Tu	16 Th	16 Su	16 Tu	16 Fr	16 Mo ⁸	16 Mo ¹²	16 Th	16 Sa	16 Tu	16 Th
17 Su	17 We	17 Fr	17 Mo ⁴⁷	17 We	17 Sa	17 Tu	17 Tu	17 Fr	17 Su	17 We	17 Fr
18 Mo ³⁴	18 Th	18 Sa	18 Tu	18 Th	18 Su	18 We	18 We	18 Sa	18 Mo ²¹	18 Th	18 Sa
19 Tu	19 Fr	19 Su	19 We	19 Fr	19 Mo ⁴	19 Th	19 Th	19 Su	19 Tu	19 Fr	19 Su
20 We	20 Sa	20 Mo ⁴³	20 Th	20 Sa	20 Tu	20 Fr	20 Fr	20 Mo ¹⁷	20 We	20 Sa	20 Mo ³⁰
21 Th	21 Su	21 Tu	21 Fr	21 Su	21 We	21 Sa	21 Sa	21 Tu	21 Th	21 Su	21 Tu
22 Fr	22 Mo ³⁹	22 We	22 Sa	22 Mo ⁵²	22 Th	22 Su	22 Su	22 We	22 Fr	22 Mo ²⁶	22 We
23 Sa	23 Tu	23 Th	23 Su	23 Tu	23 Fr	23 Mo ⁹	23 Mo ¹³	23 Th	23 Sa	23 Tu	23 Th
24 Su	24 We	24 Fr	24 Mo ⁴⁸	24 We	24 Sa	24 Tu	24 Tu	24 Fr	24 Su	24 We	24 Fr
25 Mo ^{August Bk. Hol. 35}	25 Th	25 Sa	25 Tu	25 Th ^{Christmas Day}	25 Su	25 We	25 We	25 Sa	25 Mo ^{Spring Bk. Hol. 22}	25 Th	25 Sa
26 Tu	26 Fr	26 Su	26 We	26 Fr ^{Boxing Day}	26 Mo ⁵	26 Th	26 Th	26 Su	26 Tu	26 Fr	26 Su
27 We	27 Sa	27 Mo ⁴⁴	27 Th	27 Sa	27 Tu	27 Fr	27 Fr	27 Mo ¹⁸	27 We	27 Sa	27 Mo ³¹
28 Th	28 Su	28 Tu	28 Fr	28 Su	28 We	28 Sa	28 Sa	28 Tu	28 Th	28 Su	28 Tu
29 Fr	29 Mo ⁴⁰	29 We	29 Sa	29 Mo ¹	29 Th		29 Su	29 We	29 Fr	29 Mo ²⁷	29 We
30 Sa	30 Tu	30 Th	30 Su	30 Tu	30 Fr		30 Mo ¹⁴	30 Th	30 Sa	30 Tu	30 Th
31 Su		31 Fr		31 We	31 Sa		31 Tu		31 Su		31 Fr

2025				2026						
SEPTEMBER	OCTOBER	NOVEMBER	DECEMBER	JANUARY	FEBRUARY	MARCH	APRIL	MAY	JUNE	JULY
Mon 1st (INSET)	Wed 1st	Sat 1st	Mon 1st	Thurs 1st <i>New Years Day</i>	Sun 1st	Sun 1st	Wed 1st	Fri 1st	Mon 1st GCSE Exams	We 1st Year 10 Mocks
Tue 2nd (INSET)	Thurs 2nd	Sun 2nd	Tues 2nd DC1 Deadline KS3 & 10	Fri2nd	Mon 2nd	Mon 2nd Year 11 Mocks	Thurs 2nd	Sat 2nd	Tues2nd GCSE Exams	Thurs 2nd Mock Catch-up
Wed 3rd	Fri 3rd	Mon 3rd	Wed 3rd	Sat 3rd	Tues 3rd	Tues 3rd Year 11 Mocks	Fri 3rd <i>Good Friday</i>	Sun 3rd	Wed 3rd GCSE Exams	Fri 3rd
Thur 4th	Sat 4th	Tues 4th	Thurs 4th	Sun 4th	Wed 4th	Wed 4th Year 11 Mocks	Sat 4th	Mon 4th <i>May Day</i>	Turs 4th GCSE Exams	Sat 4th
Fri 5th	Sun 5th	Wed 5th Yr 11 Mocks	Fri 5th	Mon 5th (INSET)	Thurs 5th	Thurs 5th Year 11 Mocks	Sun 5th	Tues 5th GCSE Exams	Fri 5th GCSE Exams	Sun 5th
Sat 6th	Mon 6th	Thurs 6th Yr 11 Mocks	Sat 6th	Tues 6th	Fri 6th	Fri 6th Year 11 Mocks	Mon 6th <i>Easter Monday</i>	Wed 6th GCSE Exams	Sat 6th	Mon 6th
Sun 7th	Tues 7th	Fri 7th Yr 11 Mocks	Sun 7th	Wed 7th	Sat 7th	Sat 7th	Tues 7th	Thurs 7th GCSE Exams	Sun 7th	Tues 7th DC3 Entry Deadline
Mon 8th	Wed 8th	Sat 8th	Mon 8th DC1 HoD Check	Thurs 8th	Sun 8th	Sun 8th	Wed 8th	Fri 8th GCSE Exams	Mon 8th GCSE Exams (Y10 Work Experience)	Wed 8th
Tue 9th	Thurs 9th	Sun 9th	Tues9th	Fri 9th	Mon 9th Yr 10 CORE mocks	Mon 9th	Thurs99th	Sat 9th	Tues 9th GCSE Exams (Y10 Work Experience)	Thurs 9th
Wed 10th	Fri 10th	Mon 10th Yr 11 Mocks	Wed 10th	Sat 10th	Tues 10th Yr 10 CORE mocks	Tues 10th Year 11 Mocks	Fri 10th	Sun 10th	Wed 10th GCSE Exams (Y10 Work Experience)	Fri 10th
Thur 11th	Sat 11th	Tues 11th Yr 11 Mocks	Thurs 11th DC1 Reports Home	Sun 11th	Wed11th Yr 10 CORE mocks	Wed 11th Mock Catch-up	Sat 11th	Mon 11th GCSE Exams	Thurs 11th GCSE Exams (Y10 Work Experience)	Sat 11th
Fri 12th	Sun 12th	Wed 12th Yr 11 Mocks	Fri 12th	Mon 12th	Thurs 12th Yr 10 CORE mocks	Thurs12th Mock – Catch-up	Sun 12th	Tues 12th GCSE Exams	Fri 12th GCSE Exams (Y10 Work Experience)	Sun 12th
Sat 13th	Mon 13th	Thurs 13th Yr 11 Mocks	Sat 13th	Tues 13th	Fri 13th Yr 10 CORE mocks	Fri 13th	Mon 13th	Wed 13th GCSE Exams	Sat 13th	Mon 13th Hod CheckDC3
Sun 14th	Tues 14th	Fri 14th Yr 11 Mocks	Sun 14th	Wed 14th	Sat 14th	Sat14th	Tues 14th	Thurs 14th GCSE Exams	Sun 14th	Tues 14th
Mon 15th	Wed 15th	Sat 15th	Mon 15th <i>KS4 RS???</i>	Thurs 15th	Sun 15th	Sun 15th	Wed 15th	Fri 15th GCSE Exams	Mon 15th GCSE Exams	Wed 15th
Tues16th	Thurs 16th	Sun 16th	Tues 16th <i>KS4 RS???</i>	Fri 16th	Mon 16th	Mon 16th	Thurs 16th	Sat 16th	Tues 16th GCSE Exams	Thurs 16th DC3 Report
Wed 17th	Fri 17th	Mon 17th Yr 11 Mocks	Wed 17th <i>KS4 RS???</i>	Sat17th	Tues 17th	Tues 17th DC2 Entry Deadline	Fri 17th	Sun 17th	Wed 17th GCSE Exams	Fri 17th
Thurs18th	Sat 18th	Tues 18th Yr 11 Mocks	Thurs 18th <i>KS4 RS???</i>	Sun 18th	Wed 18th	Wed 18th	Sat 18th	Mon 18th GCSE Exams	Thurs 18th Year 10 Mocks	Sat 18th
Fri 19th	Sun 19th	Wed 19th Yr 11 Mocks	Fri 19th <i>KS4 RS???</i>	Mon 19th <i>KS3 RS???</i>	Thurs 19th	Thurs 19th Year 11 MOCK 2.0 Evening	Sun 19th	Tues 19th GCSE Exams	Fri 19th Year 10 Mocks	Sun 19th
Sat 20th	Mon 20th	Thurs 20th Mock Catch-up	Sat 20th	Tues 20th <i>KS3 RS???</i>	Fri 20th	Fri 20th	Mon 20th	Wed 20th GCSE Exams	Sat 20th	Mon 20th
Sun 21st	Tues 21st	Fri 21st Mock Catch-up	Sun 21st	Wed 21st <i>KS3 RS???</i>	Sat 21st	Sat 21st	Tues 21st	Thurs 21st GCSE Exams	Sun 21st	Tues 21st
Mon 22nd	Wed 22nd	Sat 22nd	Mon 22nd	Thurs 22nd <i>KS3 RS???</i>	Sun 22nd	Sun 22nd	Wed 22nd	Fri 22nd GCSE Exams	Mon 22nd Year 10 Mocks	Wed 22nd
Tue 23rd	Thurs 23rd Year 7 Settling in evening	Sun 23rd	Tues 23rd	Fri 23rd <i>KS3 RS???</i>	Mon 23rd	Mon 23rd DC2 HOD Check	Thurs 23rd	Sat 23rd	Tues 23rd Year 10 Mocks	Thurs 23rd
Wed 24th	Fri 24th	Mon 24th	Wed 24th	Sat 24th	Tues 24th	Tues 24th	Fri 24th	Sun 24th	Wed 24th Year 10 Mocks	Fri 24th
Thurs 25th	Sat 25th	Tues 25th Yr 11 Mock Deadline / DC1 Yr 11 / College Apps	Thurs 25th <i>Christmas day</i>	Sun 25th	Wed 25th Year 11 Mocks	Wed 25th	Sat 25th	Mon 25th <i>Spring Bank</i>	Thurs 25th Year 10 Mocks	Sat 25th
Fri 26th	Sun 26th	Wed 26th	Fri 26th <i>Boxing Day</i>	Mon 26th	Thurs 26th Year11 Mocks (Year 10 Mock Results and Parents Evening)	Thurs 26th DC2 Reports Home Year 8 Parents Evening	Sun 26th	Tues 26th	Fri 26th Year 10 Mocks	Sun 26th
Sat 27th	Mon 27th	Thurs 27th Year 11 Parents Evening and Mock Results	Sat 27th	Tues 27th	Fri 27th Year 11 Mocks	Fri 27th	Mon 27th	Wed 27th	Sat 27th	Mon 27th

ORGANISATION: WEEKLY ENRICHMENT



Monday

Whole-School Seminar
Sports Hall



Tuesday

RHSE
Team Rooms

Wednesday

Mastery Mindset/Year Update
Lecture Theatre



Thursday

Careers
Team Rooms

Friday

Home Run/College Prep
Lecture Theatre





- ✓ Please make sure you know your exam board qualifications.
- ✓ Make sure you know your **current grades** from Summer Mocks.
- ✓ **Know your coursework grades** that have been 'banked' for vocational qualifications.
- ✓ **GCSE Mock 3** – W/C 3rd November
- ✓ **GCSE Mock 4** - W/C 23rd February
- ✓ **GCSE Exams** - W/C 4th May
- ✓ On Friday we have College visitors presenting.

QUALIFICATIONS

- | |
|--------------------------------------------------------------------------------------------------------------------------------------------------------------------------------------------------------------------------------------------------------------------------|
| <ul style="list-style-type: none">• ENGLISH LANGUAGE - AQA• ENGLISH LITERATURE – AQA• FUNCTIONAL SKILLS ENGLISH LEVEL 2 - AQA• STEP UP TO ENGLISH - AQA |
| <ul style="list-style-type: none">• MATHS (HIGHER) - AQA• MATHS (FOUNDATION) - AQA• ENTRY LEVEL MATHS - AQA |
| <ul style="list-style-type: none">• BIOLOGY - AQA• CHEMISTRY - AQA• PHYSICS - AQA• COMBINED SCIENCE TRILOGY - AQA• ENTRY LEVEL SCIENCE - AQA |
| <ul style="list-style-type: none">• GERMAN - PEARSON EDEXCEL• FRENCH - PEARSON EDEXCEL• ARABIC - PEARSON EDEXCEL• HISTORY - PEARSON EDEXCEL• ITALIAN - AQA• PERSIAN - PEARSON EDEXCEL• SPANISH - AQA |
| <ul style="list-style-type: none">• GEOGRAPHY – AQA• RELIGIOUS STUDIES – AQA• HISTORY - AQA• ENTRY LEVEL GEOGRAPHY – OCR• ENTRY LEVEL HISTORY - OCR |
| <ul style="list-style-type: none">• BUSINESS & ENTERPRISE – NCFE• COMPUTING (DIT) - PEARSON EDEXCEL• TRAVEL & TOURISM - PEARSON EDEXCEL• MEDIA - PEARSON EDEXCEL |
| <ul style="list-style-type: none">• HEALTH & FITNESS – NCFE• PERFORMING ARTS – WJEC• HEALTH & SOCIAL CARE - OCR |
| <ul style="list-style-type: none">• ART & DESIGN (ART, CRAFT & DESIGN) - AQA• ART & DESIGN (PHOTOGRAPHY) - AQA• MUSIC - PEARSON EDEXCEL• FOOD & COOKERY – NCFE• PHOTOGRAPHY - AQA |



NOTICES

- ✓ **Great start to the new term** – well done! Remember the routines shared last week.
- ✓ **Students (and staff) had an amazing time at Alton Towers on Friday.** Remember that your attendance and ATL counts to get these opportunities.
- ✓ **Year 7 had an amazing time with TILG on Friday.** Great to see you meeting new friends and being well behaved.
- ✓ **Remember that ALL positive/negative points are tracked** and all students are displayed in Mr Watkin's office for discussion.
- ✓ **Can you remember your curriculum** topics for this Half-Term?
- ✓ **KS4 – do you fully understand your GCSE subjects** and the deadlines?

NOTICES

✓ **Remember to know your exam boards** and what you have 'banked'. I can't stress enough that you need to know these to plan for success.

✓ **We will go through each one now as a reminder for you all.**

DO

YOU KNOW?

✓ **Changes to some exam boards.**

✓ **Deadlines for coursework.**

✓ **Organisation!**

Year 10/11

Students must equip themselves with the exam board that will be followed when taking their GCSEs.

- ENGLISH LANGUAGE - AQA
- ENGLISH LITERATURE - AQA
- FUNCTIONAL SKILLS ENGLISH LEVEL 2 - AQA
- STEP UP TO ENGLISH - AQA

- MATHS (HIGHER) - AQA
- MATHS (FOUNDATION) - AQA
- ENTRY LEVEL MATHS - AQA

- BIOLOGY - AQA
- CHEMISTRY - AQA
- PHYSICS - AQA
- COMBINED SCIENCE TRILOGY - AQA
- ENTRY LEVEL SCIENCE - AQA

- GERMAN - PEARSON EDEXCEL
- FRENCH - PEARSON EDEXCEL
- ARABIC - PEARSON EDEXCEL
- HISTORY - PEARSON EDEXCEL
- ITALIAN - AQA
- PERSIAN - PEARSON EDEXCEL
- SPANISH - AQA

- GEOGRAPHY - AQA
- RELIGIOUS STUDIES - AQA
- HISTORY - AQA
- ENTRY LEVEL GEOGRAPHY - OCR
- ENTRY LEVEL HISTORY - OCR

- BUSINESS & ENTERPRISE - NCFE
- COMPUTING (DIT) - PEARSON EDEXCEL
- TRAVEL & TOURISM - PEARSON EDEXCEL
- MEDIA - PEARSON EDEXCEL

- HEALTH & FITNESS - NCFE
- PERFORMING ARTS - WJEC
- HEALTH & SOCIAL CARE - OCR

- ART & DESIGN (ART, CRAFT & DESIGN) - AQA
- ART & DESIGN (PHOTOGRAPHY) - AQA
- MUSIC - PEARSON EDEXCEL
- FOOD & COOKERY - NCFE
- PHOTOGRAPHY - AQA

YOUR SELLING POINTS: **EMPLOYABILITY**



YOUR ATTENDANCE FIGURE

How you can evidence that you attend and value education – your reliability!



YOUR CLASSCHARTS PROFILE

How you can evidence that you value and respect education – your attitude in life!



YOUR PERSONAL SKILLS & QUALITIES

How you can evidence the rewards, extra commitments and how much you can talk confidently about yourself.

ATTENDANCE | ATL | CONDUCT | REWARDS | EXTRA-CURRICULAR | HEALTH

NEW YEAR, NEW YOU!

CHALLENGE

Think about the goals you are going to set yourself to achieve your EXCEPTIONAL this academic year!



EXCEPTIONAL



**THE
SPECIAL 6**
STEPS TO EXCEPTIONAL

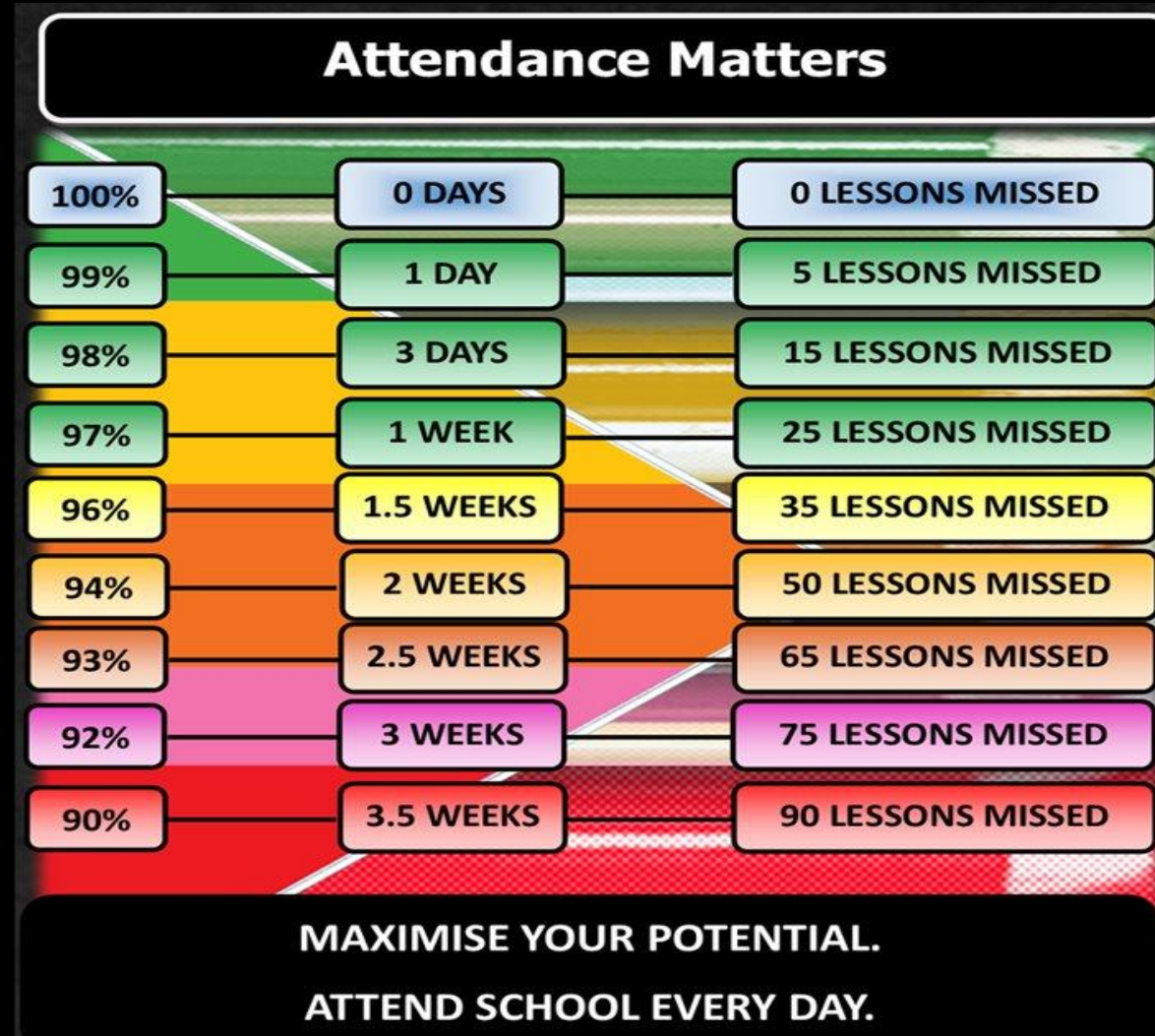
- ✓ **ATTENDANCE**
- ✓ **ATTITUDE TO LEARNING**
- ✓ **CONDUCT**
- ✓ **REWARDS**
- ✓ **EXTRA-CURRICULAR**
- ✓ **HEALTH**



Newsome Academy

General Expectations

✓ Attendance matters



Remember the impact that a low attendance figure has on College applications and life chances!

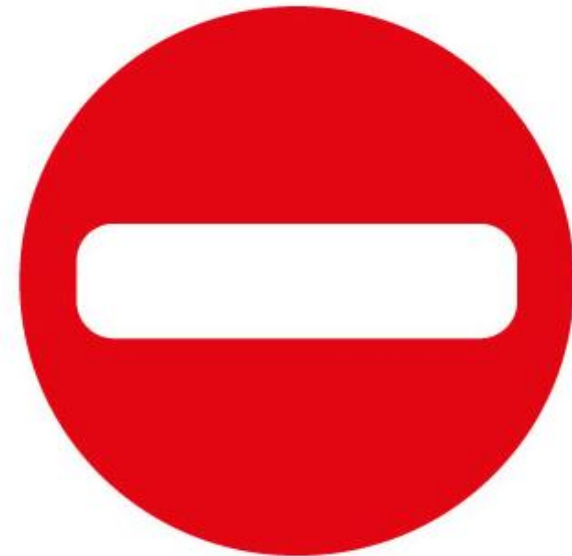
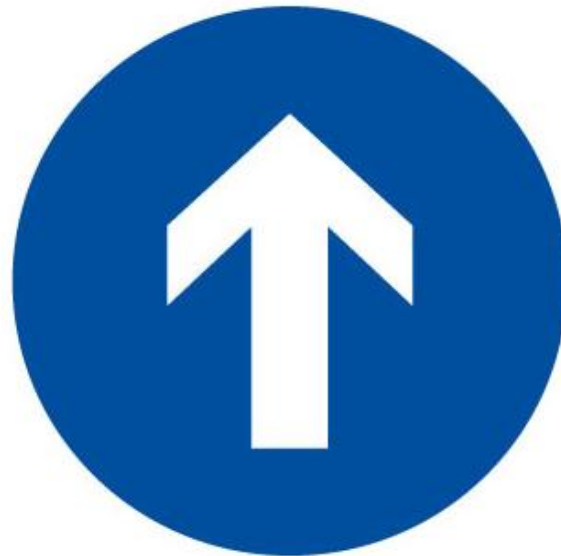


Newsome Academy

General Expectations

- ✓ **To the left!**
- ✓ We all walk on the left-hand side to support movement and disability access.

Keep to the Left





Newsome Academy

General Expectations

- ✓ **No mobile phones AT ALL in school**
- ✓ If it is seen or used, it will be confiscated – just like any other school.
- ✓ Should any other 'smart device'





Newsome Academy



**CHECK OUR
MOBILE PHONE
POLICY [HERE](#)**

2.2 Guidelines

2.2.1 Students

- Students remain responsible for all of their personal belongings whilst at school. When students enter the school grounds the school takes no responsibility for mobile phones. Mobile phones are brought to school entirely at the owner's risk. The school accepts no responsibility for replacing lost, stolen or damaged mobile phones.
- Students must adhere to the guidelines and protocol set out by the school when using their devices. If this is not adhered to a suitable sanction will be put in place. For safeguarding reasons, students are not allowed to use camera phones to take images on the school grounds.
- Mobile phones and other electronic devices are only to be used when instructed by a member of staff and to complete work/research tasks in an allocated period of time. The school are mindful that this must be kept to a minimum and only used when absolutely necessary.

2.2.2 Parents

- For safeguarding reasons parents are advised not to use camera phones to take images on the school grounds.
- Parents should not place images of other children taken at school on social media sites without permission from the parents involved.
- Parents are reminded that in cases of emergency the school office remains a vital and appropriate point of contact and can ensure your child is reached quickly and assisted in any appropriate way.

2.3 Acceptable Uses

- Mobile phones should be switched off and out of sight in school (Hear it, see it, lose it).
- Parents/carers are requested that in cases of emergency they contact the school reception so we are aware of any potential issue and may make the necessary arrangements.
- While on school premises, mobile phones are not to be seen or used by students, unless instructed by an adult.

2.4 Unacceptable Uses

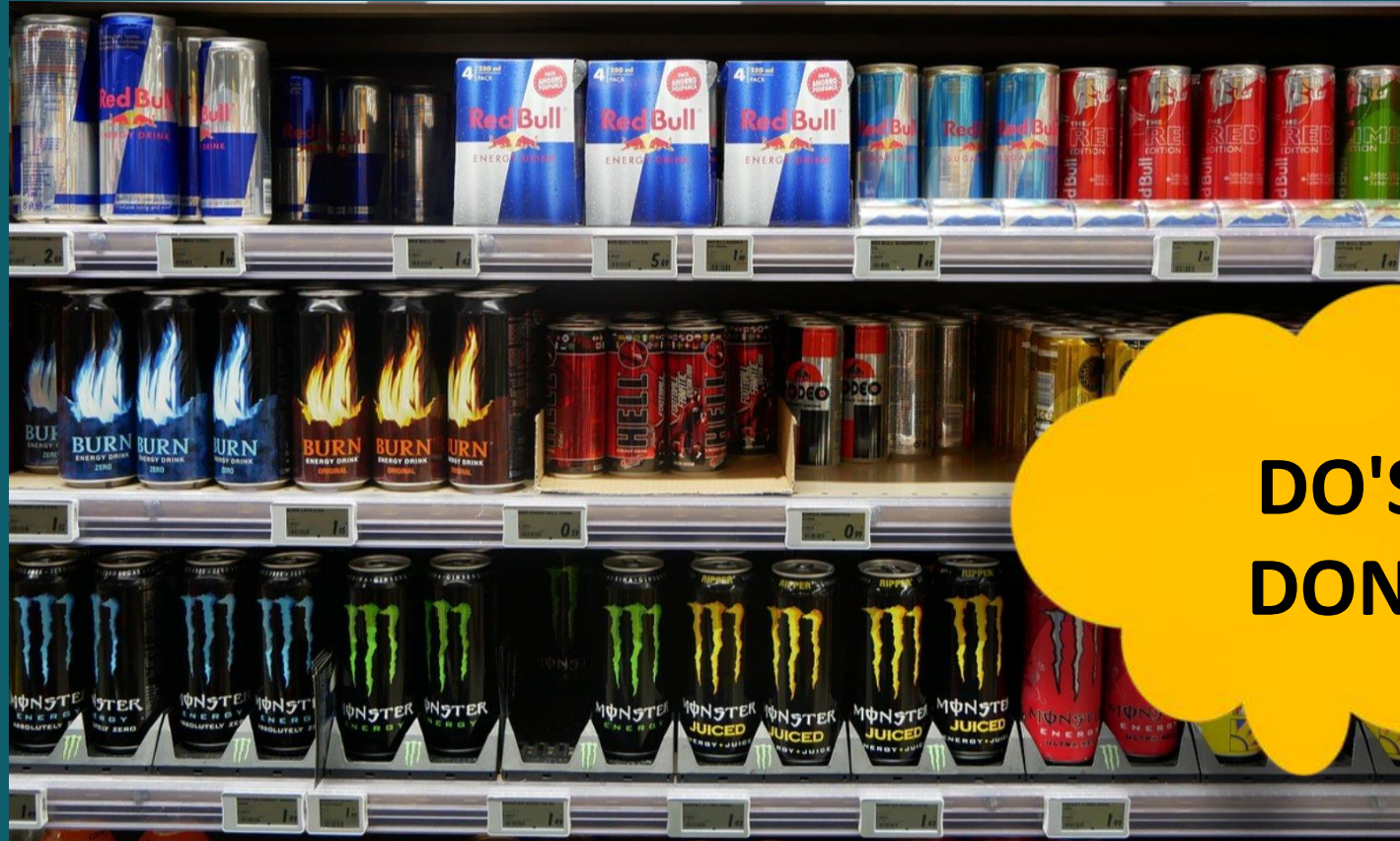
- Unless express permission is granted, mobile phones should not be used to make calls, send SMS messages, surf the internet, take photos or use any other application during the school day or while on school premises.
- The Bluetooth function of a mobile phone must be switched off at all times and not be used to send images or files to other mobile phones.



Newsome Academy

General Expectations

- ✓ No caffeine or energy drinks at all
- ✓ If there is any confusion, the school will assess whether it affects learning and will confiscate if it is 'unhealthy for learning'



**DO'S &
DON'TS**





Newsome Academy

General Expectations

- ✓ No excessive sweets and chocolate
- ✓ Families should support the school and their child's health and monitor sugar intake.
- ✓ If there is any confusion, the school will assess whether it affects learning and will confiscate if it is 'unhealthy for learning'

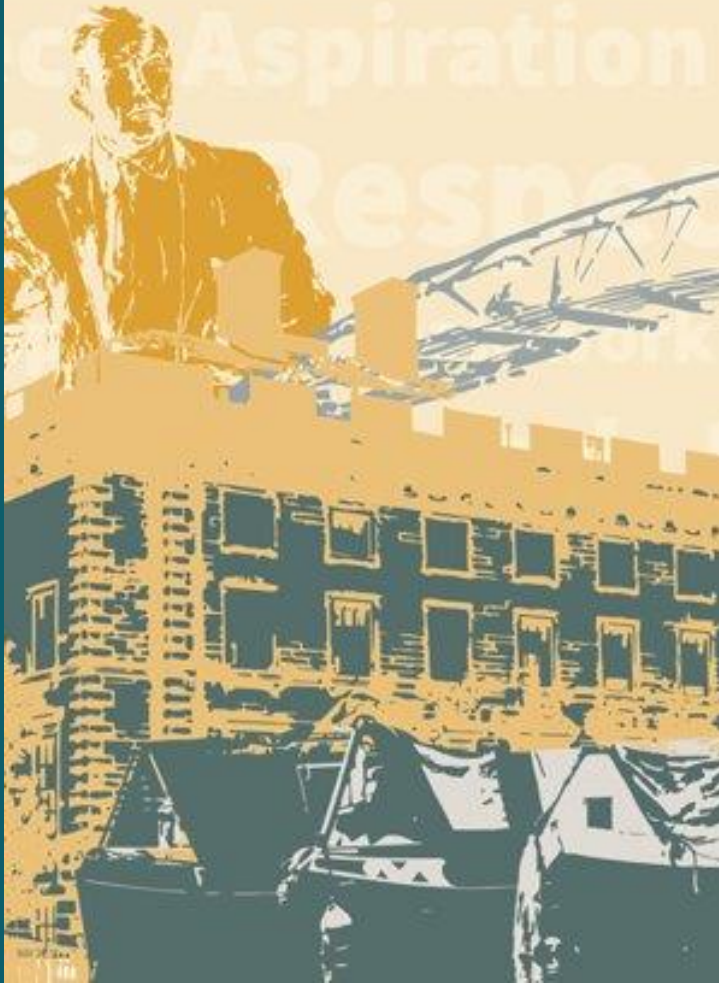


**DO'S &
DON'TS**





Newsome Academy



Have a **great** and **productive** week!

**Ms Hallsworth, Mr Watkin, Mr
Whitworth & Mr Frisby...**

**will be ensuring you are 100% focused
on your studies so that you excel in
your GCSE studies!**