



HomeRun

WC: 15TH SEPTEMBER

YEAR 11 SEMINAR/S

CALENDAR | TEAM HUDDLE | ATTENDANCE

FOCUS: EXAM READINESS (COLLEGE & REGULATIONS)



6 WEEKS

UNTIL 1 WEEK HT
BREAK

6 WEEKS

UNTIL Y11 MOCK 3
5TH NOV

27 WEEKS

UNTIL GCSE EXAMS
START
5TH MAY

37 WEEKS

UNTIL THE END OF
SCHOOL YEAR

HOLIDAY INSET Y6 TRANSITION

2025					2026						
August	September	October	November	December	January	February	March	April	May	June	July
1 Fr	1 Mo ³⁶	1 We	1 Sa	1 Mo ⁴⁹	1 Th ^{New Year's Day}	1 Su	1 Su	1 We	1 Fr	1 Mo ²³	1 We
2 Sa	2 Tu	2 Th	2 Su	2 Tu	2 Fr	2 Mo ⁶	2 Mo ¹⁰	2 Th	2 Sa	2 Tu	2 Th
3 Su	3 We	3 Fr	3 Mo ⁴⁵	3 We	3 Sa	3 Tu	3 Tu	3 Fr ^{Good Friday}	3 Su	3 We	3 Fr
4 Mo ³²	4 Th	4 Sa	4 Tu	4 Th	4 Su	4 We	4 We	4 Sa	4 Mo ^{Early May Bk. Hol. 19}	4 Th	4 Sa
5 Tu	5 Fr	5 Su	5 We	5 Fr	5 Mo ²	5 Th	5 Th	5 Su	5 Tu	5 Fr	5 Su
6 We	6 Sa	6 Mo ⁴¹	6 Th	6 Sa	6 Tu	6 Fr	6 Fr	6 Mo ^{Easter Monday 5}	6 We	6 Sa	6 Mo ²⁸
7 Th	7 Su	7 Tu	7 Fr	7 Su	7 We	7 Sa	7 Sa	7 Tu	7 Th	7 Su	7 Tu
8 Fr	8 Mo ³⁷	8 We	8 Sa	8 Mo ⁵⁰	8 Th	8 Su	8 Su	8 We	8 Fr	8 Mo ²⁴	8 We
9 Sa	9 Tu	9 Th	9 Su	9 Tu	9 Fr	9 Mo ⁷	9 Mo ¹¹	9 Th	9 Sa	9 Tu	9 Th
10 Su	10 We	10 Fr	10 Mo ⁴⁶	10 We	10 Sa	10 Tu	10 Tu	10 Fr	10 Su	10 We	10 Fr
11 Mo ³³	11 Th	11 Sa	11 Tu	11 Th	11 Su	11 We	11 We	11 Sa	11 Mo ²⁰	11 Th	11 Sa
12 Tu	12 Fr	12 Su	12 We	12 Fr	12 Mo ³	12 Th	12 Th	12 Su	12 Tu	12 Fr	12 Su
13 We	13 Sa	13 Mo ⁴²	13 Th	13 Sa	13 Tu	13 Fr	13 Fr	13 Mo ¹⁶	13 We	13 Sa	13 Mo ²⁹
14 Th	14 Su	14 Tu	14 Fr	14 Su	14 We	14 Sa	14 Sa	14 Tu	14 Th	14 Su	14 Tu
15 Fr	15 Mo ³⁸	15 We	15 Sa	15 Mo ⁵¹	15 Th	15 Su	15 Su	15 We	15 Fr	15 Mo ²⁵	15 We
16 Sa	16 Tu	16 Th	16 Su	16 Tu	16 Fr	16 Mo ⁸	16 Mo ¹²	16 Th	16 Sa	16 Tu	16 Th
17 Su	17 We	17 Fr	17 Mo ⁴⁷	17 We	17 Sa	17 Tu	17 Tu	17 Fr	17 Su	17 We	17 Fr
18 Mo	18 Th	18 Sa	18 Tu	18 Th	18 Su	18 We	18 We	18 Sa	18 Mo ²¹	18 Th	18 Sa
19 Tu	19 Fr	19 Su	19 We	19 Fr	19 Mo ⁴	19 Th	19 Th	19 Su	19 Tu	19 Fr	19 Su
20 We	20 Sa	20 Mo ⁴³	20 Th	20 Sa	20 Tu	20 Fr	20 Fr	20 Mo ¹⁷	20 We	20 Sa	20 Mo ³⁰
21 Th	21 Su	21 Tu	21 Fr	21 Su	21 We	21 Sa	21 Sa	21 Tu	21 Th	21 Su	21 Tu
22 Fr	22 Mo ³⁹	22 We	22 Sa	22 Mo ⁵²	22 Th	22 Su	22 Su	22 We	22 Fr	22 Mo ²⁶	22 We
23 Sa	23 Tu	23 Th	23 Su	23 Tu	23 Fr	23 Mo ⁹	23 Mo ¹³	23 Th	23 Sa	23 Tu	23 Th
24 Su	24 We	24 Fr	24 Mo ⁴⁸	24 We	24 Sa	24 Tu	24 Tu	24 Fr	24 Su	24 We	24 Fr
25 Mo ^{August Bk. Hol. 35}	25 Th	25 Sa	25 Tu	25 Th ^{Christmas Day}	25 Su	25 We	25 We	25 Sa	25 Mo ^{Spring Bk. Hol. 22}	25 Th	25 Sa
26 Tu	26 Fr	26 Su	26 We	26 Fr ^{Boxing Day}	26 Mo ⁵	26 Th	26 Th	26 Su	26 Tu	26 Fr	26 Su
27 We	27 Sa	27 Mo ⁴⁴	27 Th	27 Sa	27 Tu	27 Fr	27 Fr	27 Mo ¹⁸	27 We	27 Sa	27 Mo ³¹
28 Th	28 Su	28 Tu	28 Fr	28 Su	28 We	28 Sa	28 Sa	28 Tu	28 Th	28 Su	28 Tu
29 Fr	29 Mo ⁴⁰	29 We	29 Sa	29 Mo ¹	29 Th		29 Su	29 We	29 Fr	29 Mo ²⁷	29 We
30 Sa	30 Tu	30 Th	30 Su	30 Tu	30 Fr		30 Mo ¹⁴	30 Th	30 Sa	30 Tu	30 Th
31 Su		31 Fr		31 We	31 Sa		31 Tu		31 Su		31 Fr

ORGANISATION: WEEKLY ENRICHMENT



Monday

Whole-School Seminar
Sports Hall



Tuesday

RHSE
Team Rooms

Wednesday

Mastery Mindset/Year Update
Lecture Theatre



Thursday

Careers
Team Rooms

Friday

Home Run/College Prep
Lecture Theatre





Team Huddle



- ✓ **General conduct.** Overall fantastic – there are a few though that need to mature and focus before it is too late.
- ✓ **Exam boards.** EVERYONE should know their exam boards and upcoming coursework deadlines – no exceptions!
- ✓ **College preferences.** Your Team Leaders along with Mrs Hallworth need your College preferences. Ensure these are done.
- ✓ **Year 11 Evening.** Another GCSE Evening will be scheduled before the end of this half-term.
- ✓ **Prom location.** Venue decided. Only those that work hard and earn this reward will go this event.
- ✓ **Period 6** - This is upcoming – remember to plan for this as it's no surprise. All this goes towards any reward and indeed your exam grade.



- ✓ Please make sure you know your exam board qualifications.
- ✓ Make sure you know your **current grades** from Summer Mocks.
- ✓ **Know your coursework grades** that have been 'banked' for vocational qualifications.
- ✓ **GCSE Mock 3** – W/C 3rd November
- ✓ **GCSE Mock 4** - W/C 23rd February
- ✓ **GCSE Exams** - W/C 4th May
- ✓ On Friday we have College visitors presenting.

QUALIFICATIONS

- ENGLISH LANGUAGE - AQA
- ENGLISH LITERATURE – AQA
- FUNCTIONAL SKILLS ENGLISH LEVEL 2 - AQA
- STEP UP TO ENGLISH - AQA

- MATHS (HIGHER) - AQA
- MATHS (FOUNDATION) - AQA
- ENTRY LEVEL MATHS - AQA

- BIOLOGY - AQA
- CHEMISTRY - AQA
- PHYSICS - AQA
- COMBINED SCIENCE TRILOGY - AQA
- ENTRY LEVEL SCIENCE - AQA

- GERMAN - PEARSON EDEXCEL
- FRENCH - PEARSON EDEXCEL
- ARABIC - PEARSON EDEXCEL
- HISTORY - PEARSON EDEXCEL
- ITALIAN - AQA
- PERSIAN - PEARSON EDEXCEL
- SPANISH - AQA

- GEOGRAPHY – AQA
- RELIGIOUS STUDIES – AQA
- HISTORY - AQA
- ENTRY LEVEL GEOGRAPHY – OCR
- ENTRY LEVEL HISTORY - OCR

- BUSINESS & ENTERPRISE – NCFE
- COMPUTING (DIT) - PEARSON EDEXCEL
- TRAVEL & TOURISM - PEARSON EDEXCEL
- MEDIA - PEARSON EDEXCEL

- HEALTH & FITNESS – NCFE
- PERFORMING ARTS – WJEC
- HEALTH & SOCIAL CARE - OCR

- ART & DESIGN (ART, CRAFT & DESIGN) - AQA
- ART & DESIGN (PHOTOGRAPHY) - AQA
- MUSIC - PEARSON EDEXCEL
- FOOD & COOKERY – NCFE
- PHOTOGRAPHY - AQA



NOTICES

Readiness for Exams

You can be disqualified from exam boards for malpractice, which includes actions like using unauthorized materials (e.g., mobile phones), copying work, plagiarism, collusion, or sharing/obtaining confidential exam information. Being late for an exam can also lead to work not being accepted. Consequences for malpractice range from losing marks to being disqualified from a specific paper or even an entire qualification.

Examples of Malpractice and Rule-Breaking

- **Unauthorized Materials:** Bringing mobile phones, smartwatches, or other electronic devices into the exam room is a common cause for penalties and disqualification.
- **Plagiarism and Copying:** Submitting work that is not your own, or allowing your work to be copied by others, can lead to penalties.
- **Collusion:** Helping other students with their work or allowing others to help you with yours.
- **Cheating:** Engaging in any unfair or dishonest practice during the exam.
- **Sharing Information:** Revealing details about exam questions before an exam, whether you think they are real or fake, or failing to report such information.
- **Security Breaches:** Breaches of exam security can also constitute malpractice.
- **Breach of Exam Conditions:** Failing to follow the rules for the exam, such as being on time.

Consequences of Malpractice

If you are suspected of malpractice, an investigation will be launched. Consequences vary and can include:

- **Losing marks:** on a specific paper.
- **Being disqualified:** from one or more exams.
- **Losing your entire qualification:** or certification opportunity.



NOTICES

TRUE STORY

The Importance of Rules and Regulations...

I received an email during week 2 of the summer holidays following an email from AQA.

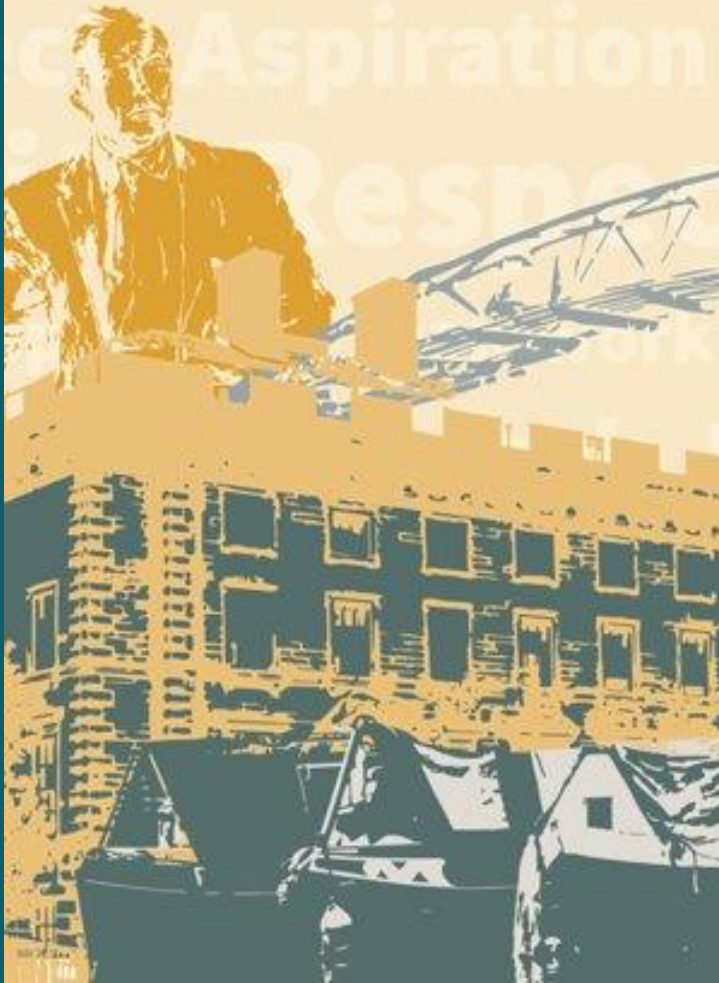
A student had:

- Doodled on the bottom of the page.
- Answered a question inappropriately.

What happened next...



Newsome Academy



Happy Friday

**Ms Hallsworth, Mr Watkin, Mr Whitworth
& Mr Frisby...**

**congratulate you on another successful
week!**



NOTICES

✓ **Remember to know your exam boards** and what you have 'banked'. I can't stress enough that you need to know these to plan for success.

✓ **We will go through each one now as a reminder for you all.**

DO

YOU KNOW?

✓ **Changes to some exam boards.**

✓ **Deadlines for coursework.**

✓ **Organisation!**

Year 10/11

Students must equip themselves with the exam board that will be followed when taking their GCSEs.

- ENGLISH LANGUAGE - AQA
- ENGLISH LITERATURE - AQA
- FUNCTIONAL SKILLS ENGLISH LEVEL 2 - AQA
- STEP UP TO ENGLISH - AQA

- MATHS (HIGHER) - AQA
- MATHS (FOUNDATION) - AQA
- ENTRY LEVEL MATHS - AQA

- BIOLOGY - AQA
- CHEMISTRY - AQA
- PHYSICS - AQA
- COMBINED SCIENCE TRILOGY - AQA
- ENTRY LEVEL SCIENCE - AQA

- GERMAN - PEARSON EDEXCEL
- FRENCH - PEARSON EDEXCEL
- ARABIC - PEARSON EDEXCEL
- HISTORY - PEARSON EDEXCEL
- ITALIAN - AQA
- PERSIAN - PEARSON EDEXCEL
- SPANISH - AQA

- GEOGRAPHY - AQA
- RELIGIOUS STUDIES - AQA
- HISTORY - AQA
- ENTRY LEVEL GEOGRAPHY - OCR
- ENTRY LEVEL HISTORY - OCR

- BUSINESS & ENTERPRISE - NCFE
- COMPUTING (DIT) - PEARSON EDEXCEL
- TRAVEL & TOURISM - PEARSON EDEXCEL
- MEDIA - PEARSON EDEXCEL

- HEALTH & FITNESS - NCFE
- PERFORMING ARTS - WJEC
- HEALTH & SOCIAL CARE - OCR

- ART & DESIGN (ART, CRAFT & DESIGN) - AQA
- ART & DESIGN (PHOTOGRAPHY) - AQA
- MUSIC - PEARSON EDEXCEL
- FOOD & COOKERY - NCFE
- PHOTOGRAPHY - AQA

YOUR SELLING POINTS: **EMPLOYABILITY**



YOUR ATTENDANCE FIGURE

How you can evidence that you attend and value education – your reliability!



YOUR CLASSCHARTS PROFILE

How you can evidence that you value and respect education – your attitude in life!



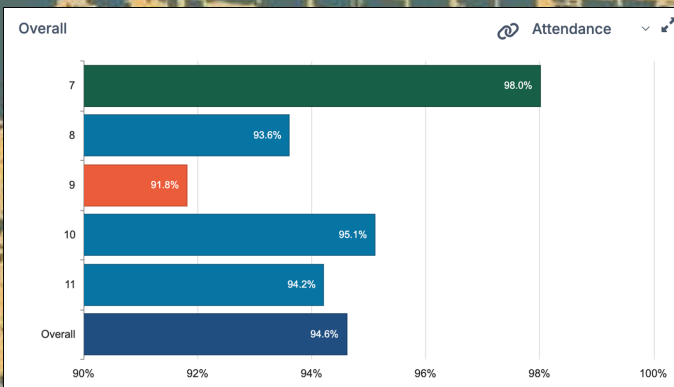
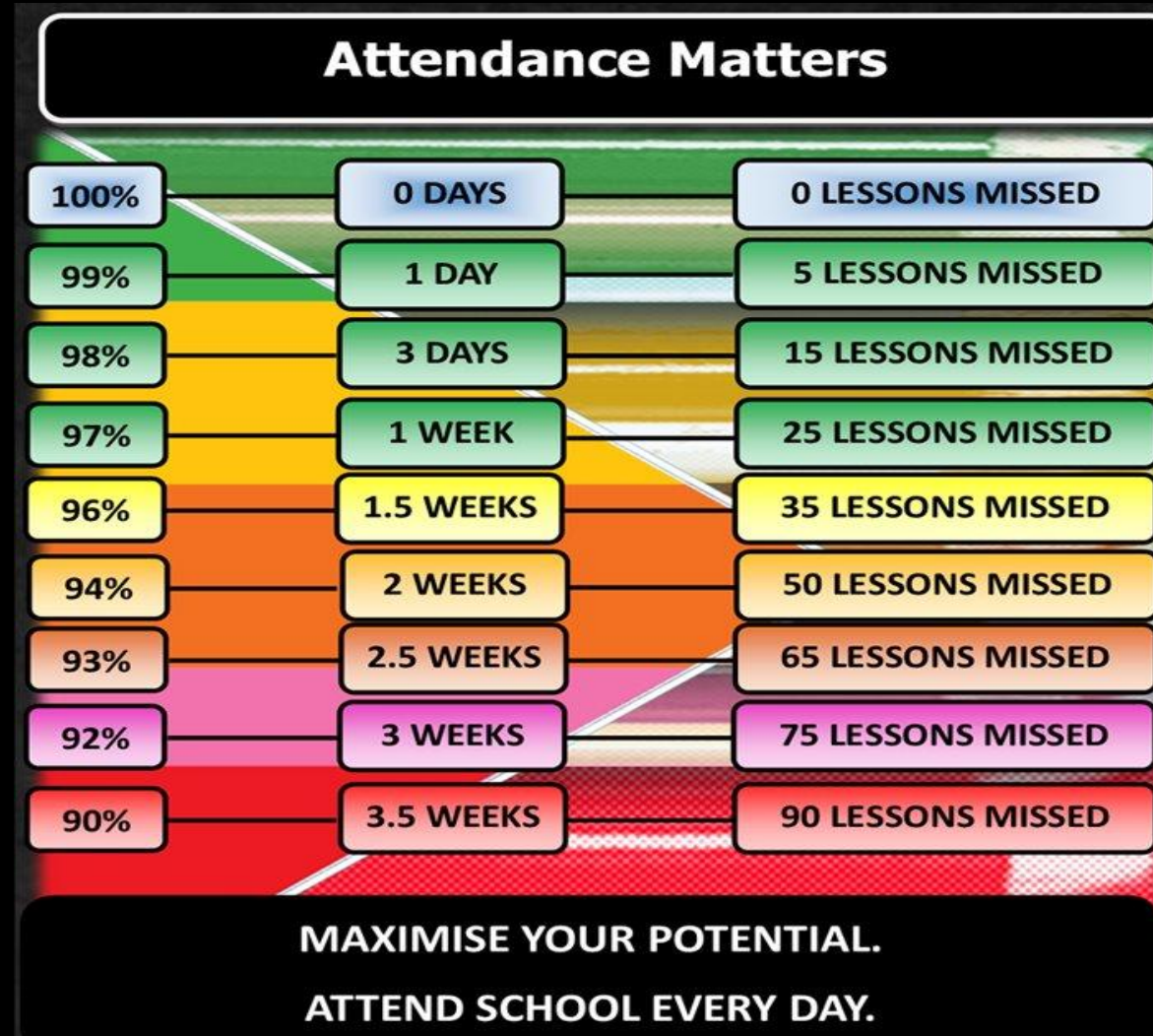
YOUR PERSONAL SKILLS & QUALITIES

How you can evidence the rewards, extra commitments and how much you can talk confidently about yourself.

General Expectations

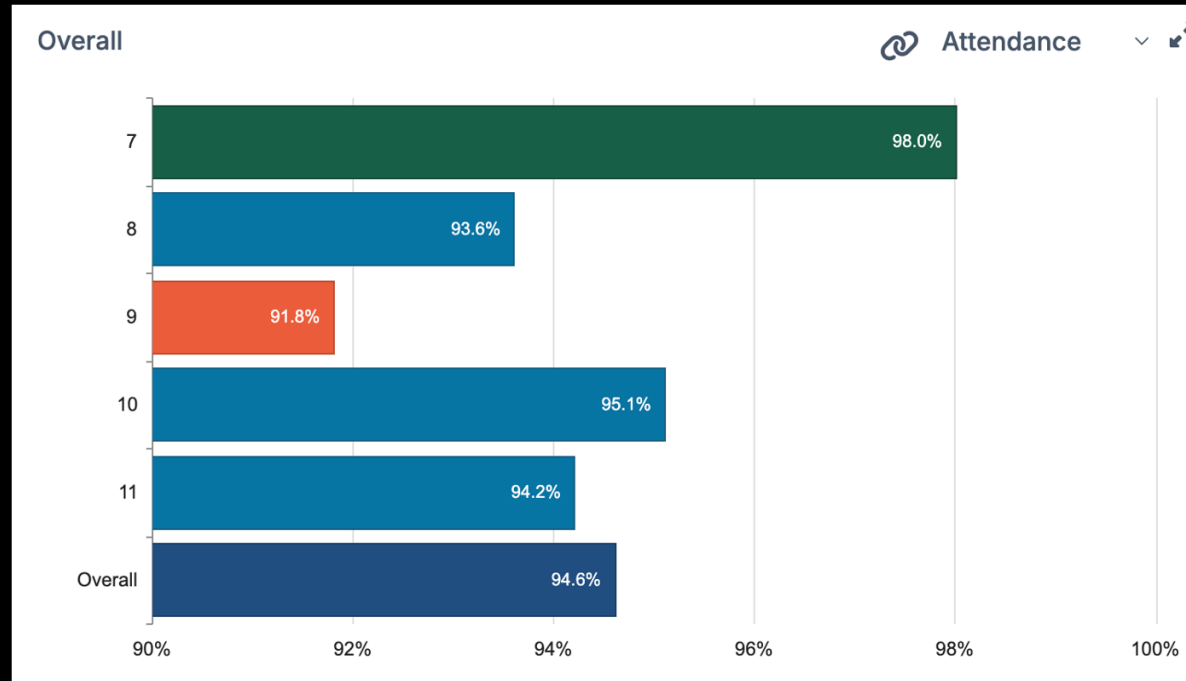
✓ Attendance matters

Remember the impact that a low attendance figure has on College applications and life chances!



General Expectations

✓ Attendance matters



Remember the impact that a low attendance figure has on College applications and life chances!



Team Huddle



- ✓ **Remember the importance of knowing your exam boards!** As Mr Watkin has mentioned – this is VITAL to your own preparation.
- ✓ **English & Maths Springboard.** Some students have additional sessions in Maths and English. This is to focus on key skills that are required to prepare you for your exams.
- ✓ **Attendance is currently at 94.2%.** EVERYONE should know their own personal score and the consequences this WILL have in their college process. Keep a close eye on those that come into our Seminars and lessons late... they are the ones that will underachieve...
- ✓ **Home Run – what is it (again)?** Today, we will share with you the 'Teams' that will form our Year 11 initiative. Buy-in is essential!

HomeRun



Sprint to success

YEAR 11 GCSE STRATEGY

A TEAM SPIRIT APPROACH **CONNECTING HEARTS & MINDS**

ORGANISATION | PREPARATION | MOTIVATION



A TEAM SPIRIT APPROACH **CONNECTING**
HEARTS & MINDS

YEAR 11 GCSE STRATEGY

ORGANISATION | PREPARATION | MOTIVATION

Newsome's *HomeRun* is about the excellent
behaviours that help cement academic success.

- Attendance to school
- Punctuality
- Attendance to Period 6
- Attitude to Learning grades
- Positive (and negative points) on class-charts
- Performance in Mock exams
- RITA values
- Exceptional work in lesson
- Sustained effort
- Progress and improvement made over time
- Revision activity

We will give you an experienced mentor who will guide, support, and encourage you as you prepare for your GCSEs.

Ethan Croft
Niamh Storer
Afsha Saeed
Myles Handley
Jenice Anokye
Jenson Crowther
Archie Farnsworth
Beau Taylor
Shaun Mavhiza
Kayden Boyle
Leah Kinsella
Ogooluwa Jimi-Peters
Kaige Vanterpool

Carr's Cubs



Cayla Robinson
Grace Kingston
Shawnel Kudya
Alfie Scully
Manasik Babo
Parya Hamadraza
Evie Hill
Dmytro Kryvoruchko
Sophie Jones
Tadiwa Gwisai
Simal Soleman
Aaliyah Boylan
Keaton Barbour

Ainley's Angels



Boluwatife Yinusa
Mikolaj Piech
Adina Clyne
Diana Alsemari
Tayana Ncube
Rhys Lambert
Ibrahim Dampha
Emmanuella Adewunmi
Sylas Simmonds
Andrei Milov
Karta Lewis-Geaney
Afolabi Agbolahan
Maisey Moore

Bamforth's Broncos



Aleksandra Wozniak
Taylor Copp
Igor Baginski
Lebohang Sebata
Ioana-Daria Aveloae
Adam Mohiuddin
Jessica Brennan
Heidi Cookson
Peyton Stead
Chidindu Ekezie
Lexi Walker
Amelia Lindley
Majid Hafsa

Cole's Outlaws



Osas Aiyanio-Ehigior
Chelsea Clark
Muhammad Abu Bakr
Makai Smith
Tanaya Ncube
Bilal Bangura
Mohammad Wahid
Lewis Boothroyd
Raul Andrei Blidaru
Honey Quashie
Rwand Kadir
Annah Mbanje
Maram Froukh

Hall's Eagles



Jake Ward
Daniel Moses
Phoebe Ridgway
Rachel Kamuto
Elliot Sykes
Lily Turfrey
Kaeli Gleadall
Maison Taylor
Jessica Popiel
Luke Rowe
Tyreece Bent
Ayaana Risalat
Mason Hampton

Fox's Flames



Martha Brian
Fatima Matala
Evan Lockwood
Ruby Brook
Oscar Chacia
Zoe Higgins
Keiran McCluskey
Harvey Kitson
Brendan Edokpa
Theo Carter
Richari Hamilton-Campbell
Bancroft-Fergusson Connor
Sina Amin

Stokes' All-Stars



Oluwanifemi Ajom
Kenzi Reilly
Lily-Mai Lawson
Deniss Volinskis
Scarlett Carter
Jasmine Ufuoma Edijana
Rihanna Chappell
Meeval Shiju
Ellie Green
Kaidan Taylor-Farooq
Aaliyah Simpson
Benjamin Dale
Hardy Kalie

Smart's Sharks



David Olutayo
Mollie Childs
Mofiyinfoluwa Adebamakin
Ikembuchukwu Nwako
Amelia Lumb
Henry Burch
Chukwuemeke Nwashindi
Finley Green
Grace-Leigh Wild
Oluwakorede Adeyemo
Leen Alkhalaf
Boyes Benjamin
Nathaniel Holt

Lyon's Pride



Janelle Midwood
Patrik Plawiak
Aya Al Laftah
Miracle-Joe Enomosele
Daisy Whitaker
Massimo Girardi
Demi-Lea Murphy
Gabriel Robertshaw
Morgan-Jade Robinson
Rahand Abdulla
Paras Kumar
Tyler Balmforth
Enamuna Osagie Gift

Mitchell's Cowboys



Heera Khan
Mary Fraga Camilo
Abdulrahman Algwide
Natasha Hussain
Eisa Wasim
Tadeusz Roznowski
Harri Hyko
Hassan Iqbal
Oscar Cockerell
Casey-Leigh Robinson
Letisia Grabowska
Ethan Rowe
Kayden Katty

Frisby's Firehawks



Natasha Nawaz
Oluwadarasimi Ilesanmi
Kaliyah Spencer
Harmony Emokpae
Sana Ahmad
Archie Cowley
Sean Allen
Stephen Karanja
Sean Cairns
Abdul Yousaf Anjum
Alisha Mumtaz
Ezekiel Afolabi
Lily May Andrews

Whitworth's White-Sox









**ANNOUNCEMENT
IN FRIDAY'S
SEMINAR**



PROM

- **Friday 19th June**
- Meltham Golf Course in the Marquee
- Tickets £40.00





Newsome Academy

General Expectations

- ✓ **No mobile phones AT ALL in school**
- ✓ If it is seen or used, it will be confiscated – just like any other school.
- ✓ Should any other 'smart device'



ATTENDANCE | ATL | CONDUCT | REWARDS | EXTRA-CURRICULAR | HEALTH

NEW YEAR, NEW YOU!

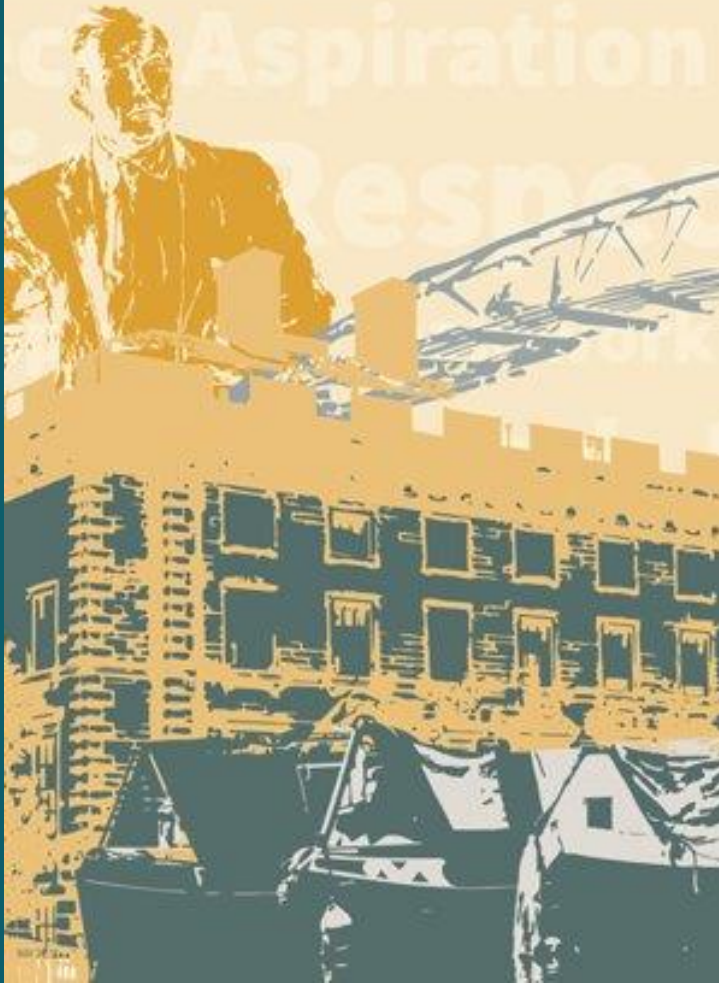
CHALLENGE

Think about the goals you are going to set yourself to achieve your EXCEPTIONAL this academic year!





Newsome Academy



Have a **great** and **productive** weekend!

**Ms Hallsworth, Mr Watkin, Mr Whitworth
& Mr Frisby...**

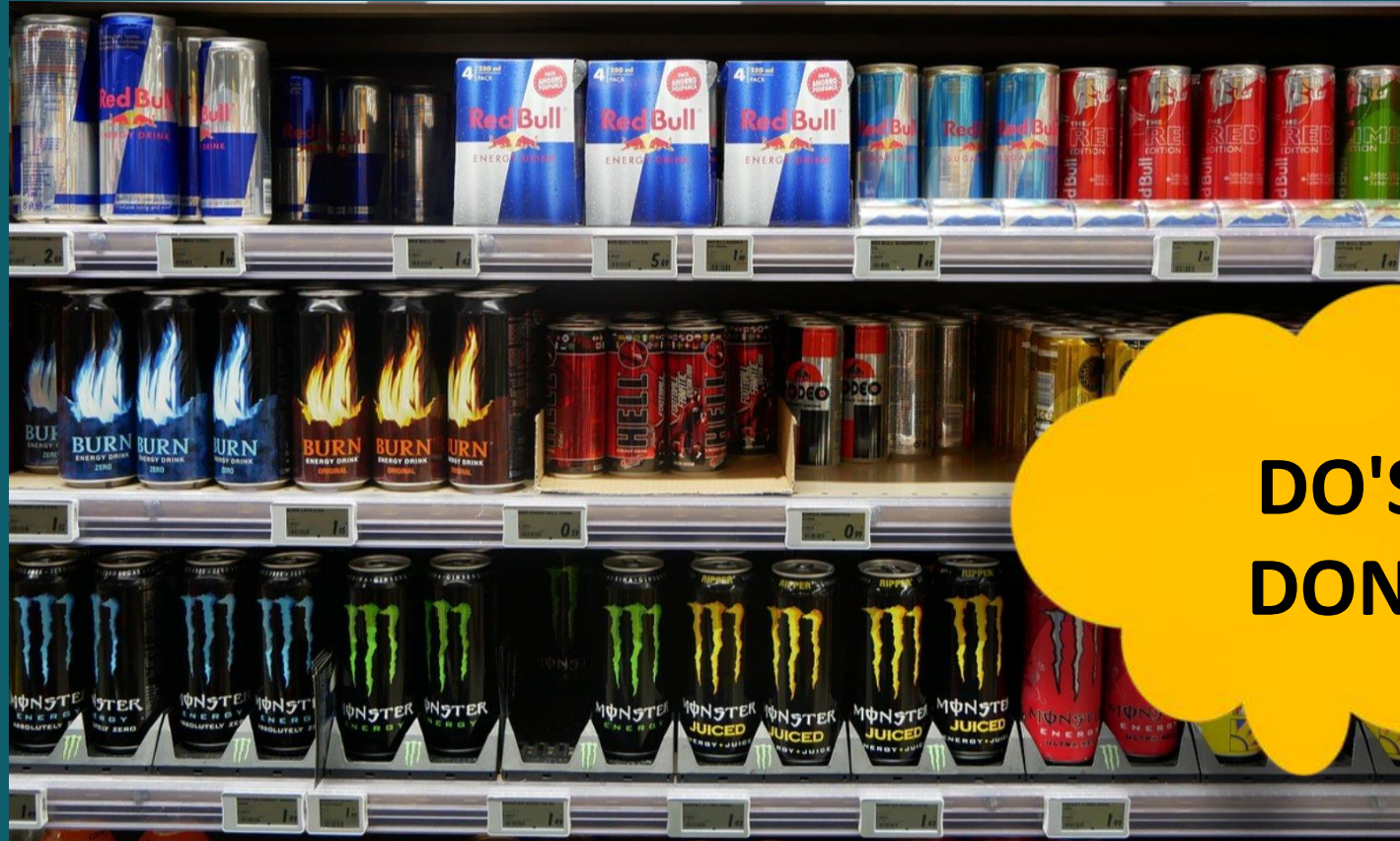
**will be ensuring you are 100% focused on
your studies so that you excel in your
GCSE studies!**



Newsome Academy

General Expectations

- ✓ No caffeine or energy drinks at all
- ✓ If there is any confusion, the school will assess whether it affects learning and will confiscate if it is 'unhealthy for learning'



**DO'S &
DON'TS**





Newsome Academy

General Expectations

- ✓ No excessive sweets and chocolate
- ✓ Families should support the school and their child's health and monitor sugar intake.
- ✓ If there is any confusion, the school will assess whether it affects learning and will confiscate if it is 'unhealthy for learning'



**DO'S &
DON'TS**

