

YEAR 11 COMMUNITY NEWS

Week 4b – Monday 22nd September



**Newsome
Academy**

STUDENT SEMINAR



Key information shared to all students and families each week.
To be discussed at home to support home/school communication & consistency.



HOLIDAY INSET Y6 TRANSITION

2025					2026						
August	September	October	November	December	January	February	March	April	May	June	July
1 Fr	1 Mo ³⁶	1 We	1 Sa	1 Mo ⁴⁹	1 Th ^{New Year's Day}	1 Su	1 Su	1 We	1 Fr	1 Mo ²³	1 We
2 Sa	2 Tu	2 Th	2 Su	2 Tu	2 Fr	2 Mo ⁶	2 Mo ¹⁰	2 Th	2 Sa	2 Tu	2 Th
3 Su	3 We	3 Fr	3 Mo ⁴⁵	3 We	3 Sa	3 Tu	3 Tu	3 Fr ^{Good Friday}	3 Su	3 We	3 Fr
4 Mo ³²	4 Th	4 Sa	4 Tu	4 Th	4 Su	4 We	4 We	4 Sa	4 Mo ^{Early May Bk. Hol. 19}	4 Th	4 Sa
5 Tu	5 Fr	5 Su	5 We	5 Fr	5 Mo ²	5 Th	5 Th	5 Su	5 Tu	5 Fr	5 Su
6 We	6 Sa	6 Mo ⁴¹	6 Th	6 Sa	6 Tu	6 Fr	6 Fr	6 Mo ^{Easter Monday 5}	6 We	6 Sa	6 Mo ²⁸
7 Th	7 Su	7 Tu	7 Fr	7 Su	7 We	7 Sa	7 Sa	7 Tu	7 Th	7 Su	7 Tu
8 Fr	8 Mo ³⁷	8 We	8 Sa	8 Mo ⁵⁰	8 Th	8 Su	8 Su	8 We	8 Fr	8 Mo ²⁴	8 We
9 Sa	9 Tu	9 Th	9 Su	9 Tu	9 Fr	9 Mo ⁷	9 Mo ¹¹	9 Th	9 Sa	9 Tu	9 Th
10 Su	10 We	10 Fr	10 Mo ⁴⁶	10 We	10 Sa	10 Tu	10 Tu	10 Fr	10 Su	10 We	10 Fr
11 Mo ³³	11 Th	11 Sa	11 Tu	11 Th	11 Su	11 We	11 We	11 Sa	11 Mo ²⁰	11 Th	11 Sa
12 Tu	12 Fr	12 Su	12 We	12 Fr	12 Mo ³	12 Th	12 Th	12 Su	12 Tu	12 Fr	12 Su
13 We	13 Sa	13 Mo ⁴²	13 Th	13 Sa	13 Tu	13 Fr	13 Fr	13 Mo ¹⁶	13 We	13 Sa	13 Mo ²⁹
14 Th	14 Su	14 Tu	14 Fr	14 Su	14 We	14 Sa	14 Sa	14 Tu	14 Th	14 Su	14 Tu
15 Fr	15 Mo ³⁸	15 We	15 Sa	15 Mo ⁵¹	15 Th	15 Su	15 Su	15 We	15 Fr	15 Mo ²⁵	15 We
16 Sa	16 Tu	16 Th	16 Su	16 Tu	16 Fr	16 Mo ⁸	16 Mo ¹²	16 Th	16 Sa	16 Tu	16 Th
17 Su	17 We	17 Fr	17 Mo ⁴⁷	17 We	17 Sa	17 Tu	17 Tu	17 Fr	17 Su	17 We	17 Fr
18 Mo ³⁴	18 Th	18 Sa	18 Tu	18 Th	18 Su	18 We	18 We	18 Sa	18 Mo ²¹	18 Th	18 Sa
19 Tu	19 Fr	19 Su	19 We	19 Fr	19 Mo ⁴	19 Th	19 Th	19 Su	19 Tu	19 Fr	19 Su
20 We	20 Sa	20 Mo ⁴³	20 Th	20 Sa	20 Tu	20 Fr	20 Fr	20 Mo ¹⁷	20 We	20 Sa	20 Mo ³⁰
21 Th	21 Su	21 Tu	21 Fr	21 Su	21 We	21 Sa	21 Sa	21 Tu	21 Th	21 Su	21 Tu
22 Fr	22 Mo ³⁹	22 We	22 Sa	22 Mo ⁵²	22 Th	22 Su	22 Su	22 We	22 Fr	22 Mo ²⁶	22 We
23 Sa	23 Tu	23 Th	23 Su	23 Tu	23 Fr	23 Mo ⁹	23 Mo ¹³	23 Th	23 Sa	23 Tu	23 Th
24 Su	24 We	24 Fr	24 Mo ⁴⁸	24 We	24 Sa	24 Tu	24 Tu	24 Fr	24 Su	24 We	24 Fr
25 Mo ^{August Bk. Hol. 3}	25 Th	25 Sa	25 Tu	25 Th	25 Su ^{Christmas Day}	25 We	25 We	25 Sa	25 Mo ^{Spring Bk. Hol. 22}	25 Th	25 Sa
26 Tu	26 Fr	26 Su	26 We	26 Fr ^{Boxing Day}	26 Mo ⁵	26 Th	26 Th	26 Su	26 Tu	26 Fr	26 Su
27 We	27 Sa	27 Mo ⁴⁴	27 Th	27 Sa	27 Tu	27 Fr	27 Fr	27 Mo ¹⁸	27 We	27 Sa	27 Mo ³¹
28 Th	28 Su	28 Tu	28 Fr	28 Su	28 We	28 Sa	28 Sa	28 Tu	28 Th	28 Su	28 Tu
29 Fr	29 Mo ⁴⁰	29 We	29 Sa	29 Mo ¹	29 Th		29 Su	29 We	29 Fr	29 Mo ²⁷	29 We
30 Sa	30 Tu	30 Th	30 Su	30 Tu	30 Fr		30 Mo ¹⁴	30 Th	30 Sa	30 Tu	30 Th
31 Su		31 Fr		31 We	31 Sa		31 Tu		31 Su		31 Fr

WE ARE HERE

5 WEEKS
UNTIL 1 WEEK HT
BREAK

5 WEEKS
UNTIL Y11 MOCK 3
5TH NOV

17 WEEKS
UNTIL Y10 GCSE
MOCKS
9TH FEB

26 WEEKS
UNTIL GCSE EXAMS
START
5TH MAY

36 WEEKS
UNTIL THE END OF
SCHOOL YEAR

ORGANISATION: WEEKLY ENRICHMENT



Monday

Whole-School Seminar
Sports Hall



Tuesday

RHSE
Team Rooms

Wednesday

Mastery Mindset/Year Update
Lecture Theatre



Thursday

Careers
Team Rooms

Friday

Home Run/College Prep
Lecture Theatre



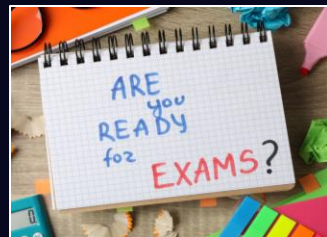


WEEKLY UPDATE

WEEK STARTING 22ND SEPTEMBER

- **Year 11 Nov Mocks** – knowing your deadlines for coursework and preparing revision.
- **Attendance & Punctuality** – you should know your current 'score' and be aiming for excellence.
- **Your School CV Profile** - How employable are you currently? Do you know your Class Charts profile that is being built up?
- **EDOL Competitions** – Create a bake or poster. See Mrs Fox for more details.
- **UK Savings Week** – Do you spend for short-term or long-term? Do you know how much a house costs?
- **Prom** – Remember that this is a reward! Your attendance & punctuality is the start of the criteria to attend.

UPCOMING EVENTS



YOUR SELLING POINTS: **EMPLOYABILITY**



YOUR ATTENDANCE FIGURE

How you can evidence that you attend and value education – your reliability!



YOUR CLASSCHARTS PROFILE

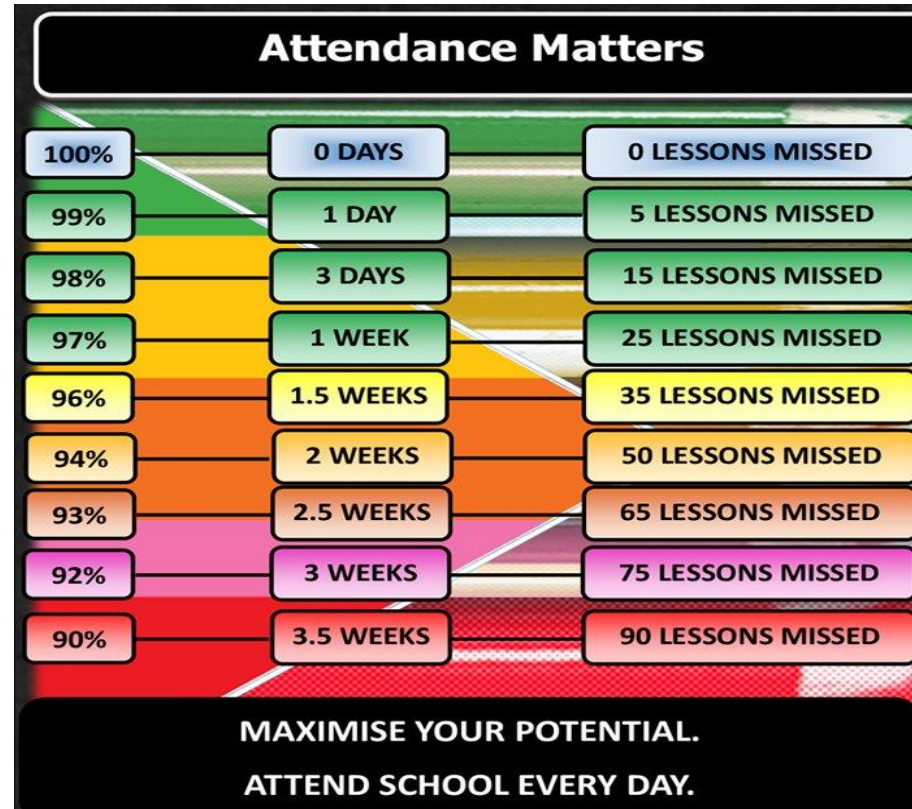
How you can evidence that you value and respect education – your attitude in life!



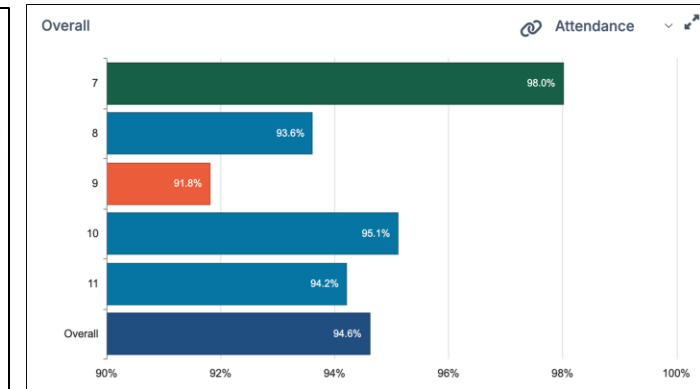
YOUR PERSONAL SKILLS & QUALITIES

How you can evidence the rewards, extra commitments and how much you can talk confidently about yourself.

Attendance & Punctuality



- ✓ 95% **minimum** for College entry requirements.
- ✓ Remember that Colleges want the best & **most reliable** students.



YOUR SELLING POINTS: **EMPLOYABILITY**



✓ **YOUR ATTENDANCE FIGURE**

How you can evidence that you attend and value education – your reliability!

✓ **YOUR CLASSCHARTS PROFILE**

How you can evidence that you value and respect education – your attitude in life!

✓ **YOUR PERSONAL SKILLS & QUALITIES**

How you can evidence the rewards, extra commitments and how much you can talk confidently about yourself.

Attitude to Learning

Much like when you are at College, the expectations of staff change slightly as you are expected to have maturity and care for your studies.

- Any time wasted in lesson is time wasted is time taking you (and others) away from their GCSE success. This is monitored even more closely as Teachers focus on those that want success in life.
- This information is gathered and sent to College as well as attendance.

WHICH ARE YOU?
WHICH WILL I REPORT?

HIGHLY ENGAGED
POSITIVE, MOTIVATED, RESILIENT, CURIOUS
FOR KNOWLEDGE, CLEAR LOVE OF LEARNING.

ENGAGED
HARD-WORKING, ENTHUSIASTIC, POSITIVE,
CONTRIBUTES, SEEKS TO IMPROVE THEIR WORK.


PASSIVE
EFFORT VARIES, INCONSISTENT ATTITUDE, RELUCTANT
TO CONTRIBUTE, COMPLIANT, LACKS DEPTH AND DETAIL.

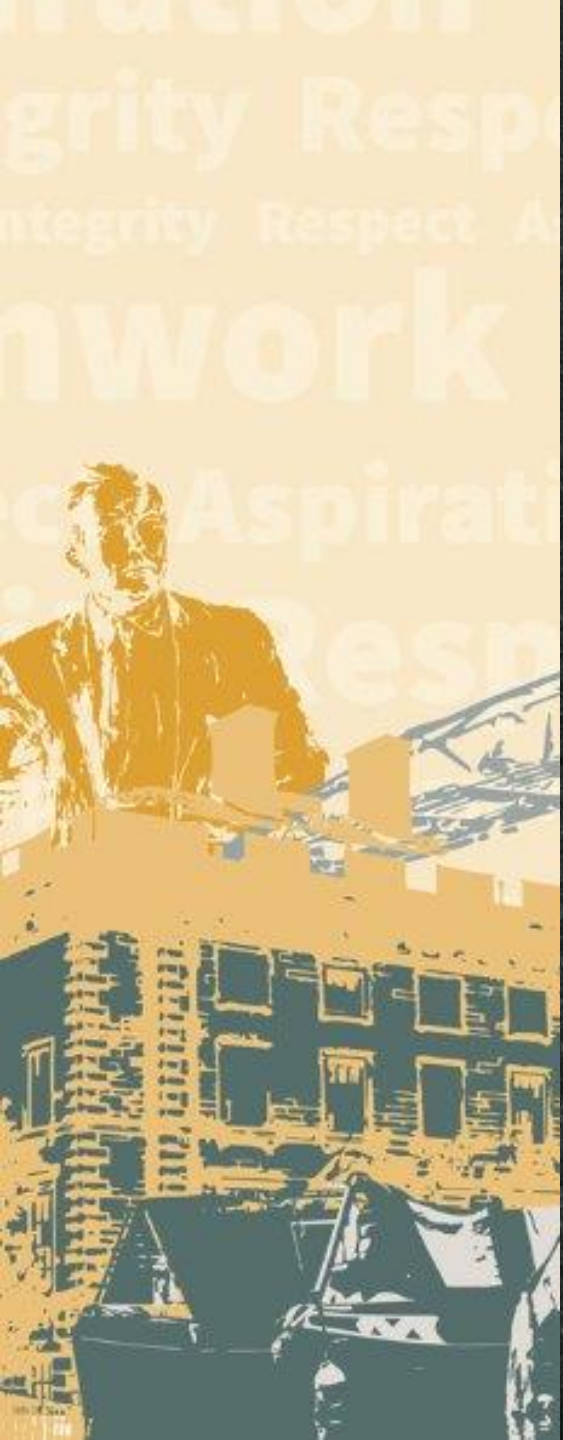
DISENGAGED
POOR EFFORT, OFF-TASK, LITTLE CONTRIBUTION,



KS3 STUDY STANDARD MATRIX: BEING A '5-STAR' EXCEPTIONAL STUDENT

✓ TO ACHIEVE THEIR VERY BEST THROUGH CONNECTING HEARTS & MINDS

ATTITUDE TO LEARNING 	1 CAUSE FOR CONCERN DISENGAGED	2 COASTING PASSIVE	3 GOOD ENGAGED	4 EXCEPTIONAL HIGHLY ENGAGED
LEARNING ATTITUDES	<ul style="list-style-type: none">✓ Poor attitude✓ Creates a negative effect on the learning environment for others✓ Does not respond to feedback to develop and improve	<ul style="list-style-type: none">✓ Occasionally asks questions or offers answers✓ Often passive in group activities and in learning overall✓ Regularly fails to respond to written and verbal feedback	<ul style="list-style-type: none">✓ Positive attitudes towards their own learning✓ Has an active role in all activities✓ Asks relevant questions and volunteers answers✓ Responds positively to feedback to improve their work	<ul style="list-style-type: none">✓ Dedication and enthusiasm✓ Seeks next steps✓ Takes a major part in lessons✓ Good role model✓ Can lead their own learning✓ Gives support to others✓ Actively seeks and responds to feedback positively
LEARNING BEHAVIOURS	<ul style="list-style-type: none">✓ Consistently fails to bring the basic equipment needed to lessons – even though the Academy provides their uniform	<ul style="list-style-type: none">✓ Needs reminding of behaviour for learning and expectations – including punctuality✓ Does not always have the necessary equipment - even though the Academy provides their uniform	<ul style="list-style-type: none">✓ Rarely off-task✓ Rarely needs to be reminded about the behaviour for learning expectations	<ul style="list-style-type: none">✓ Never off-task✓ Never needs to be reminded about the behaviour for learning expectations
COMPLETION OF TASKS	<ul style="list-style-type: none">✓ Reluctant to complete work in lesson✓ Often off-task	<ul style="list-style-type: none">✓ Easily loses concentration✓ Work is rushed, lacks detail and incomplete	<ul style="list-style-type: none">✓ Completes tasks to a good standard relative to their target grade standard	<ul style="list-style-type: none">✓ Completes tasks to a high standards and often exceeds their target grade standard
QUALITY OF WORK	<ul style="list-style-type: none">✓ Consistently fails to produce work to their required target grade	<ul style="list-style-type: none">✓ Completes most of the work set in lessons but to a minimum target	<ul style="list-style-type: none">✓ Shows enthusiasm for the subject✓ Works hard to produce work set to at least their target grade	<ul style="list-style-type: none">✓ Shows enthusiasm for the subject✓ Dedicated and strives to produce work which is over and above what is expected
INDEPENDENT LEARNING	<ul style="list-style-type: none">✓ Misses home-learning deadlines✓ Consistently fails to produce homework to their target grade	<ul style="list-style-type: none">✓ Meets home-learning deadlines but due to lack of effort, occasionally does not always produce to the level of their target grade	<ul style="list-style-type: none">✓ Meets home-learning deadlines✓ Consistently produces work to their target level	<ul style="list-style-type: none">✓ Consistently produces home-learning deadlines of a standard above what is expected✓ Furthers their knowledge by participating in additional research



MINDSET

MASTERY



YOUR SELLING POINTS: **EMPLOYABILITY**



YOUR ATTENDANCE FIGURE

How you can evidence that you attend and value education – your reliability!

YOUR CLASSCHARTS PROFILE

How you can evidence that you value and respect education – your attitude in life!

YOUR PERSONAL SKILLS & QUALITIES

How you can evidence the rewards, extra commitments and how much you can talk confidently about yourself.



COLLEGE

Usually offer more narrow programs and may have no graduate studies at all. Some universities use the term college to highlight a specific school of study encompassed within its institution.



UNIVERSITY

Denotes a school that offers full undergraduate and graduate programs. Universities often devote themselves to research and are more focused on a specific subject.





Sixth Form

- **Location:** Part of a secondary school or an independent school's campus.
- **Age Range:** Primarily for students aged 16-18.
- **Focus:** Preparing students for higher education (university) through academic courses like A-Levels.
- **Environment:** More integrated with the school community, although it can be a distinct entity within a school.

College (Further Education College)

- **Location:** Standalone institutions, separate from secondary schools.
- **Age Range:** Open to a wider range of ages, including both post-16 students and older adult learners.
- **Focus:** Offers both academic and vocational pathways, including practical, hands-on courses for specific careers, apprenticeships, and A-Levels.
- **Environment:** A more diverse, independent, and adult-oriented learning environment where students are expected to be more responsible for their own studies.

NOTICES

✓ **Remember to know your exam boards** and what you have 'banked'. I can't stress enough that you need to know these to plan for success.

✓ **We will go through each one now as a reminder for you all.**

DO

YOU KNOW?

✓ **Changes to some exam boards.**

✓ **Deadlines for coursework.**

✓ **Organisation!**

Year 10/11

Students must equip themselves with the exam board that will be followed when taking their GCSEs.

- ENGLISH LANGUAGE - AQA
- ENGLISH LITERATURE - AQA
- FUNCTIONAL SKILLS ENGLISH LEVEL 2 - AQA
- STEP UP TO ENGLISH - AQA

- MATHS (HIGHER) - AQA
- MATHS (FOUNDATION) - AQA
- ENTRY LEVEL MATHS - AQA

- BIOLOGY - AQA
- CHEMISTRY - AQA
- PHYSICS - AQA
- COMBINED SCIENCE TRILOGY - AQA
- ENTRY LEVEL SCIENCE - AQA

- GERMAN - PEARSON EDEXCEL
- FRENCH - PEARSON EDEXCEL
- ARABIC - PEARSON EDEXCEL
- HISTORY - PEARSON EDEXCEL
- ITALIAN - AQA
- PERSIAN - PEARSON EDEXCEL
- SPANISH - AQA

- GEOGRAPHY - AQA
- RELIGIOUS STUDIES - AQA
- HISTORY - AQA
- ENTRY LEVEL GEOGRAPHY - OCR
- ENTRY LEVEL HISTORY - OCR

- BUSINESS & ENTERPRISE - NCFE
- COMPUTING (DIT) - PEARSON EDEXCEL
- TRAVEL & TOURISM - PEARSON EDEXCEL
- MEDIA - PEARSON EDEXCEL

- HEALTH & FITNESS - NCFE
- PERFORMING ARTS - WJEC
- HEALTH & SOCIAL CARE - OCR

- ART & DESIGN (ART, CRAFT & DESIGN) - AQA
- ART & DESIGN (PHOTOGRAPHY) - AQA
- MUSIC - PEARSON EDEXCEL
- FOOD & COOKERY - NCFE
- PHOTOGRAPHY - AQA

ORGANISATION: WEEKLY ENRICHMENT



Monday

Whole-School Seminar
Sports Hall



Tuesday

RHSE
Team Rooms

Wednesday

Mastery Mindset/Year Update
Lecture Theatre



Thursday

Careers
Team Rooms

Friday

Home Run/College Prep
Lecture Theatre



HomeRun



Sprint to success

YEAR 11 GCSE STRATEGY

A TEAM SPIRIT APPROACH **CONNECTING HEARTS & MINDS**

ORGANISATION | PREPARATION | MOTIVATION



A TEAM SPIRIT APPROACH **CONNECTING**
HEARTS & MINDS

YEAR 11 GCSE STRATEGY

ORGANISATION | PREPARATION | MOTIVATION

Newsome's *HomeRun* is about the excellent
behaviours that help cement academic success.

- Attendance to school
- Punctuality
- Attendance to Period 6
- Attitude to Learning grades
- Positive (and negative points) on class-charts
- Performance in Mock exams
- RITA values
- Exceptional work in lesson
- Sustained effort
- Progress and improvement made over time
- Revision activity

We will give you an experienced mentor who will guide, support, and encourage you as you prepare for your GCSEs.



gc

Greenhead College

Achieving Excellence, Valuing Individuals

HomeRun

Ethan Croft
Niamh Storer
Afsha Saeed
Myles Handley
Jenice Anokye
Jenson Crowther
Archie Farnsworth
Beau Taylor
Shaun Mavhiza
Kayden Boyle
Leah Kinsella
Ogooluwa Jimi-Peters
Kaige Vanterpool

Carr's Cubs



Cayla Robinson
Grace Kingston
Shawnel Kudya
Alfie Scully
Manasik Babo
Parya Hamadraza
Evie Hill
Dmytro Kryvoruchko
Sophie Jones
Tadiwa Gwisai
Simal Soleman
Aaliyah Boylan
Keaton Barbour

Ainley's Angels



Boluwatife Yinusa
Mikolaj Piech
Adina Clyne
Diana Alsemari
Tayana Ncube
Rhys Lambert
Ibrahim Dampha
Emmanuella Adewunmi
Sylas Simmonds
Andrei Milov
Karta Lewis-Geaney
Afolabi Agbolahan
Maisey Moore

Bamforth's Broncos



Aleksandra Wozniak
Taylor Copp
Igor Baginski
Lebohang Sebata
Ioana-Daria Aveloae
Adam Mohiuddin
Jessica Brennan
Heidi Cookson
Peyton Stead
Chidindu Ekezie
Lexi Walker
Amelia Lindley
Majid Hafsa

Cole's Outlaws



Osas Aiyaniyo-Ehigiator
Chelsea Clark
Muhammad Abu Bakr
Makai Smith
Tanaya Ncube
Bilal Bangura
Mohammad Wahid
Lewis Boothroyd
Raul Andrei Blidaru
Honey Quashie
Rwand Kadir
Annah Mbanje
Maram Froukh

Hall's Eagles



Jake Ward
Daniel Moses
Phoebe Ridgway
Rachel Kamuto
Elliot Sykes
Lily Turfrey
Kaeli Gleadall
Maison Taylor
Jessica Popiel
Luke Rowe
Tyreece Bent
Ayaana Risalat
Mason Hampton

Fox's Flames



Martha Brian
Fatima Matala
Evan Lockwood
Ruby Brook
Oscar Chacia
Zoe Higgins
Keiran McCluskey
Harvey Kitson
Brendan Edokpa
Theo Carter
Richari Hamilton-Campbell
Bancroft-Fergusson Connor
Sina Amin

Stokes' All-Stars



Oluwanifemi Ajom
Kenzi Reilly
Lily-Mai Lawson
Deniss Volinskis
Scarlett Carter
Jasmine Ufuoma Edijana
Rihanna Chappell
Meeval Shiju
Ellie Green
Kaidan Taylor-Farooq
Aaliyah Simpson
Benjamin Dale
Hardy Kalie

Smart's Sharks



David Olutayo
Mollie Childs
Mofiyinfoluwa Adebamakin
Ikembuchukwu Nwako
Amelia Lumb
Henry Burch
Chukwuemeke Nwashindi
Finley Green
Grace-Leigh Wild
Oluwakorede Adeyemo
Leen Alkhalaf
Boyes Benjamin
Nathaniel Holt

Lyon's Pride



Janelle Midwood
Patrik Plawiak
Aya Al Laftah
Miracle-Joe Enomosele
Daisy Whitaker
Massimo Girardi
Demi-Lea Murphy
Gabriel Robertshaw
Morgan-Jade Robinson
Rahand Abdulla
Paras Kumar
Tyler Balmforth
Enamuna Osagie Gift

Mitchell's Cowboys



Heera Khan
Mary Fraga Camilo
Abdulrahman Algwide
Natasha Hussain
Eisa Wasim
Tadeusz Roznowski
Harri Hyko
Hassan Iqbal
Oscar Cockerell
Casey-Leigh Robinson
Letisia Grabowska
Ethan Rowe
Kayden Katty

Frisby's Firehawks



Natasha Nawaz
Oluwadarasimi Ilesanmi
Kaliyah Spencer
Harmony Emokpae
Sana Ahmad
Archie Cowley
Sean Allen
Stephen Karanja
Sean Cairns
Abdul Yousaf Anjum
Alisha Mumtaz
Ezekiel Afolabi
Lily May Andrews

Whitworth's White-Sox









**ANNOUNCEMENT
IN FRIDAY'S
SEMINAR**



PROM

- **Friday 19th June**
- Meltham Golf Course in the Marquee
- Tickets £40.00



ATTENDANCE | ATL | CONDUCT | REWARDS | EXTRA-CURRICULAR | HEALTH

NEW YEAR, NEW YOU!

CHALLENGE

Think about the goals you are going to set yourself to achieve your EXCEPTIONAL this academic year!

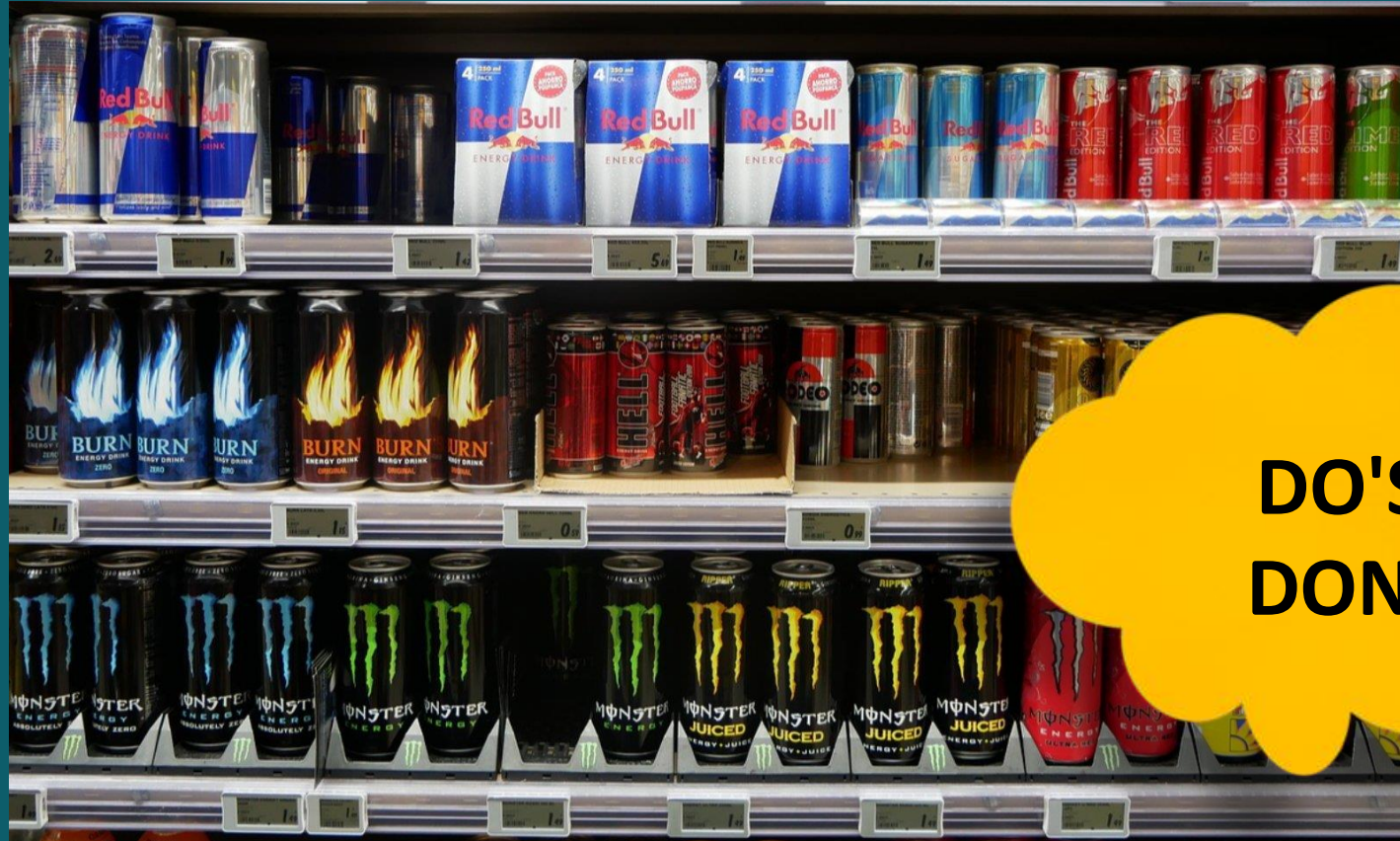




Newsome Academy

General Expectations

- ✓ No caffeine or energy drinks at all
- ✓ If there is any confusion, the school will assess whether it affects learning and will confiscate if it is 'unhealthy for learning'



**DO'S &
DON'TS**





Newsome Academy

General Expectations

- ✓ No excessive sweets and chocolate
- ✓ Families should support the school and their child's health and monitor sugar intake.
- ✓ If there is any confusion, the school will assess whether it affects learning and will confiscate if it is 'unhealthy for learning'

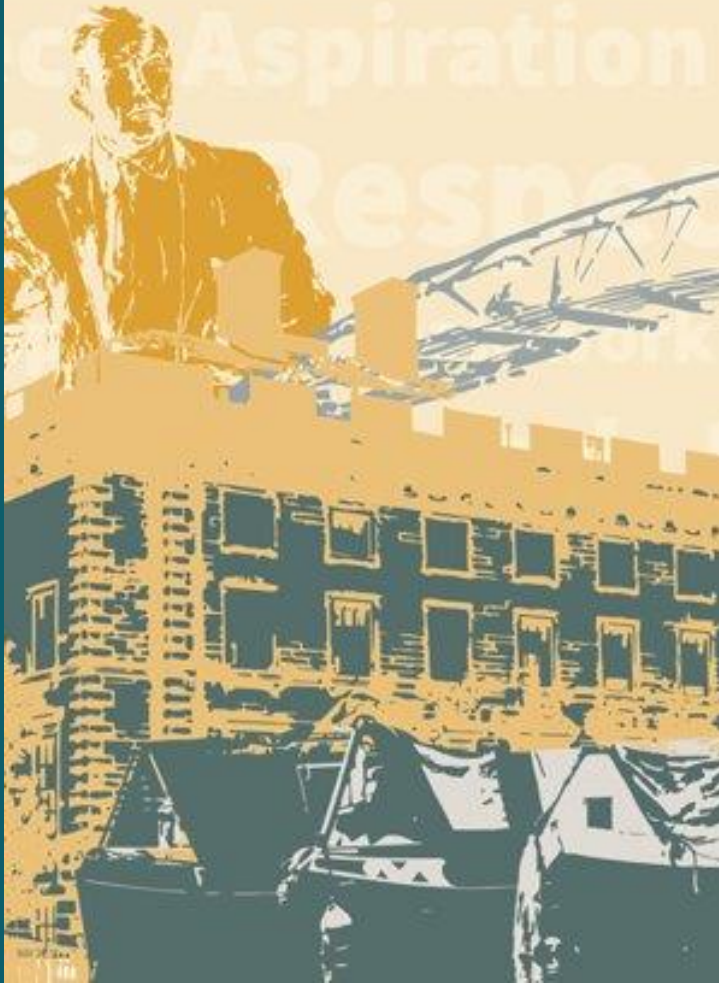


**DO'S &
DON'TS**





Newsome Academy



Have a **great** and **productive** weekend!

**Ms Hallsworth, Mr Watkin, Mr Whitworth
& Mr Frisby...**

**will be ensuring you are 100% focused on
your studies so that you excel in your
GCSE studies!**