



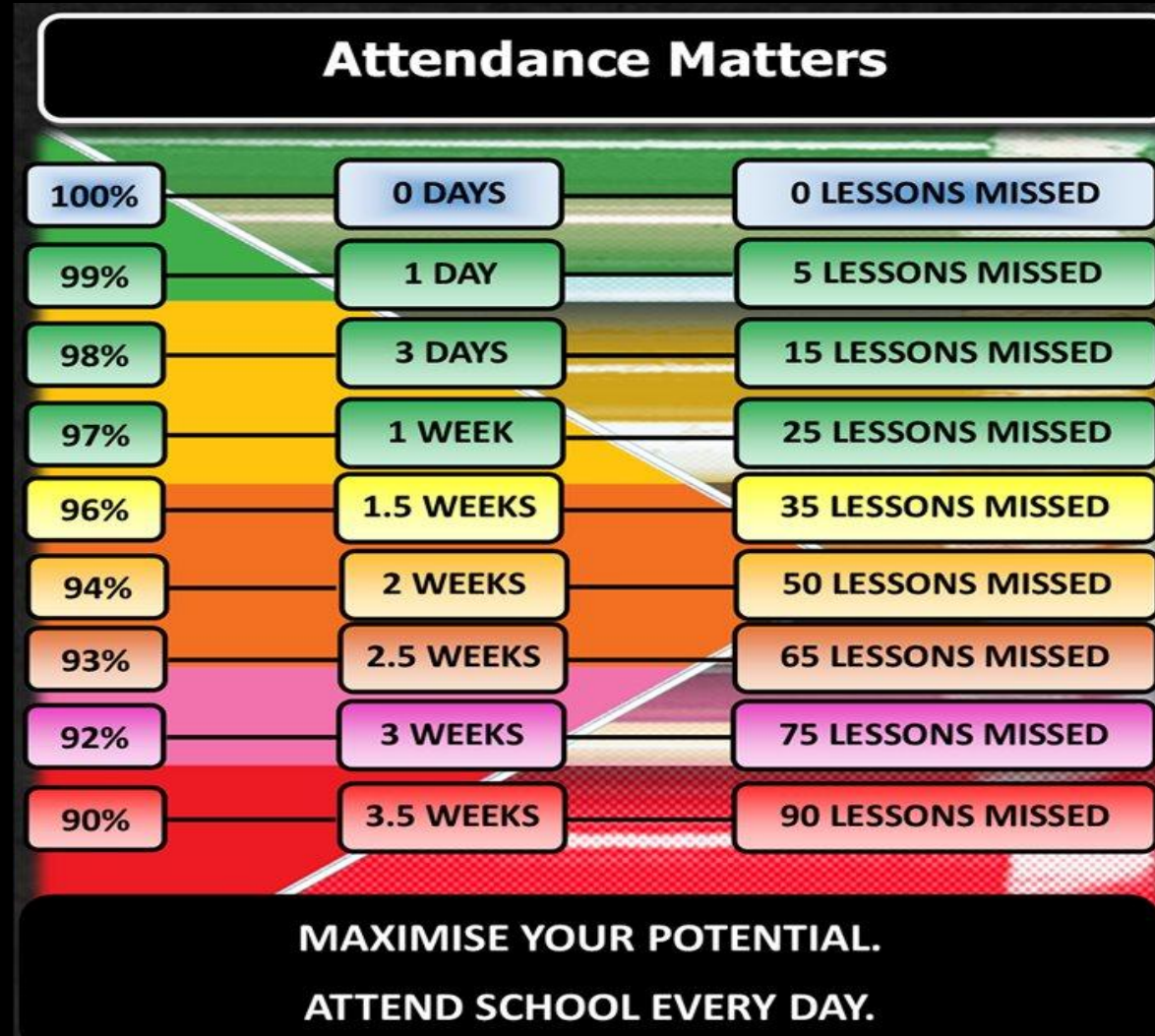
Whole School – 94.69%	
Year Group	Attendance
7	97.81
8	94.35
9	91.76
10	95.13
11	94.56



Year 10		95.13%
Team	Attendance %	Rank
AMC	94.40	6
CBR	100.00	1
GAU	97.27	3
IPA	96.80	4
LDE	98.89	2
SJO	95.00	5

General Expectations

✓ Attendance matters



Remember the impact that a low attendance figure has on College applications and life chances!



YEAR 10 SEMINAR/S
WEEK STARTING 15TH SEPTEMBER 2025



6 WEEKS

UNTIL 1 WEEK HT
BREAK

6 WEEKS

UNTIL Y11 MOCK 3
5TH NOV

18 WEEKS

UNTIL Y10 GCSE
MOCKS
9TH FEB

27 WEEKS

UNTIL GCSE EXAMS
START
5TH MAY

37 WEEKS

UNTIL THE END OF
SCHOOL YEAR

HOLIDAY INSET Y6 TRANSITION

2025					2026						
August	September	October	November	December	January	February	March	April	May	June	July
1 Fr	1 Mo ³⁶	1 We	1 Sa	1 Mo ⁴⁹	1 Th ^{New Year's Day}	1 Su	1 Su	1 We	1 Fr	1 Mo ²³	1 We
2 Sa	2 Tu	2 Th	2 Su	2 Tu	2 Fr	2 Mo ⁶	2 Mo ¹⁰	2 Th	2 Sa	2 Tu	2 Th
3 Su	3 We	3 Fr	3 Mo ⁴⁵	3 We	3 Sa	3 Tu	3 Tu	3 Fr ^{Good Friday}	3 Su	3 We	3 Fr
4 Mo ³²	4 Th	4 Sa	4 Tu	4 Th	4 Su	4 We	4 We	4 Sa	4 Mo ^{Early May Bk. Hol. 19}	4 Th	4 Sa
5 Tu	5 Fr	5 Su	5 We	5 Fr	5 Mo ²	5 Th	5 Th	5 Su	5 Tu	5 Fr	5 Su
6 We	6 Sa	6 Mo ⁴¹	6 Th	6 Sa	6 Tu	6 Fr	6 Fr	6 Mo ^{Easter Monday 5}	6 We	6 Sa	6 Mo ²⁸
7 Th	7 Su	7 Tu	7 Fr	7 Su	7 We	7 Sa	7 Sa	7 Tu	7 Th	7 Su	7 Tu
8 Fr	8 Mo ³⁷	8 We	8 Sa	8 Mo ⁵⁰	8 Th	8 Su	8 Su	8 We	8 Fr	8 Mo ²⁴	8 We
9 Sa	9 Tu	9 Th	9 Su	9 Tu	9 Fr	9 Mo ⁷	9 Mo ¹¹	9 Th	9 Sa	9 Tu	9 Th
10 Su	10 We	10 Fr	10 Mo ⁴⁶	10 We	10 Sa	10 Tu	10 Tu	10 Fr	10 Su	10 We	10 Fr
11 Mo ³³	11 Th	11 Sa	11 Tu	11 Th	11 Su	11 We	11 We	11 Sa	11 Mo ²⁰	11 Th	11 Sa
12 Tu	12 Fr	12 Su	12 We	12 Fr	12 Mo ³	12 Th	12 Th	12 Su	12 Tu	12 Fr	12 Su
13 We	13 Sa	13 Mo ⁴²	13 Th	13 Sa	13 Tu	13 Fr	13 Fr	13 Mo ¹⁶	13 We	13 Sa	13 Mo ²⁹
14 Th	14 Su	14 Tu	14 Fr	14 Su	14 We	14 Sa	14 Sa	14 Tu	14 Th	14 Su	14 Tu
15 Fr	15 Mo ³⁸	1 We	15 Sa	15 Mo ⁵¹	15 Th	15 Su	15 Su	15 We	15 Fr	15 Mo ²⁵	15 We
16 Sa	16 Tu	16 Th	16 Su	16 Tu	16 Fr	16 Mo ⁸	16 Mo ¹²	16 Th	16 Sa	16 Tu	16 Th
17 Su	17 We	17 Fr	17 Mo ⁴⁷	17 We	17 Sa	17 Tu	17 Tu	17 Fr	17 Su	17 We	17 Fr
18 Mo	18 Th	18 Sa	18 Tu	18 Th	18 Su	18 We	18 We	18 Sa	18 Mo ²¹	18 Th	18 Sa
19 Tu	19 Fr	19 Su	19 We	19 Fr	19 Mo ⁴	19 Th	19 Th	19 Su	19 Tu	19 Fr	19 Su
20 We	20 Sa	20 Mo ⁴³	20 Th	20 Sa	20 Tu	20 Fr	20 Fr	20 Mo ¹⁷	20 We	20 Sa	20 Mo ³⁰
21 Th	21 Su	21 Tu	21 Fr	21 Su	21 We	21 Sa	21 Sa	21 Tu	21 Th	21 Su	21 Tu
22 Fr	22 Mo ³⁹	22 We	22 Sa	22 Mo ⁵²	22 Th	22 Su	22 Su	22 We	22 Fr	22 Mo ²⁶	22 We
23 Sa	23 Tu	23 Th	23 Su	23 Tu	23 Fr	23 Mo ⁹	23 Mo ¹³	23 Th	23 Sa	23 Tu	23 Th
24 Su	24 We	24 Fr	24 Mo ⁴⁸	24 We	24 Sa	24 Tu	24 Tu	24 Fr	24 Su	24 We	24 Fr
25 Mo ^{August Bk. Hol. 35}	25 Th	25 Sa	25 Tu	25 Th ^{Christmas Day}	25 Su	25 We	25 We	25 Sa	25 Mo ^{Spring Bk. Hol. 22}	25 Th	25 Sa
26 Tu	26 Fr	26 Su	26 We	26 Fr ^{Boxing Day}	26 Mo ⁵	26 Th	26 Th	26 Su	26 Tu	26 Fr	26 Su
27 We	27 Sa	27 Mo ⁴⁴	27 Th	27 Sa	27 Tu	27 Fr	27 Fr	27 Mo ¹⁸	27 We	27 Sa	27 Mo ³¹
28 Th	28 Su	28 Tu	28 Fr	28 Su	28 We	28 Sa	28 Sa	28 Tu	28 Th	28 Su	28 Tu
29 Fr	29 Mo ⁴⁰	29 We	29 Sa	29 Mo ¹	29 Th		29 Su	29 We	29 Fr	29 Mo ²⁷	29 We
30 Sa	30 Tu	30 Th	30 Su	30 Tu	30 Fr		30 Mo ¹⁴	30 Th	30 Sa	30 Tu	30 Th
31 Su		31 Fr		31 We	31 Sa		31 Tu		31 Su		31 Fr



ORGANISATION: Yr 10 WEEKLY ENRICHMENT



Monday

Whole-School Seminar
Sports Hall



Tuesday

Mastery Mindset/Year Update
LRC



Wednesday

RSHE
Team Rooms

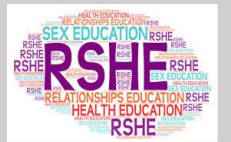
Thursday

Careers
Team Rooms



Friday

RSHE
LRC



COMMUNICATION: SPECIFIC



- ✓ Please make sure you know your exam board qualifications.
- ✓ Jeans for Genes Day on Friday – so please bring your £1 and support the cause!
- ✓ GCSE Mock 1 – W/C 9th February
- ✓ Mock results & Parents Evening - 26th February
- ✓ WORK EXPERIENCE – W/C 08.06.26
- ✓ GCSE Mock 2 – 18th June till 1st July
- ✓ End of Year Reports Home – 16th July

QUALIFICATIONS

- | |
|--|
| <ul style="list-style-type: none">• ENGLISH LANGUAGE - AQA• ENGLISH LITERATURE – AQA• FUNCTIONAL SKILLS ENGLISH LEVEL 2 - AQA• STEP UP TO ENGLISH - AQA |
| <ul style="list-style-type: none">• MATHS (HIGHER) - AQA• MATHS (FOUNDATION) - AQA• ENTRY LEVEL MATHS - AQA |
| <ul style="list-style-type: none">• BIOLOGY - AQA• CHEMISTRY - AQA• PHYSICS - AQA• COMBINED SCIENCE TRILOGY - AQA• ENTRY LEVEL SCIENCE - AQA |
| <ul style="list-style-type: none">• GERMAN - PEARSON EDEXCEL• FRENCH - PEARSON EDEXCEL• ARABIC - PEARSON EDEXCEL• HISTORY - PEARSON EDEXCEL• ITALIAN - AQA• PERSIAN - PEARSON EDEXCEL• SPANISH - AQA |
| <ul style="list-style-type: none">• GEOGRAPHY – AQA• RELIGIOUS STUDIES – AQA• HISTORY - AQA• ENTRY LEVEL GEOGRAPHY – OCR• ENTRY LEVEL HISTORY - OCR |
| <ul style="list-style-type: none">• BUSINESS & ENTERPRISE – NCFE• COMPUTING (DIT) - PEARSON EDEXCEL• TRAVEL & TOURISM - PEARSON EDEXCEL• MEDIA - PEARSON EDEXCEL |
| <ul style="list-style-type: none">• HEALTH & FITNESS – NCFE• PERFORMING ARTS – WJEC• HEALTH & SOCIAL CARE - OCR |
| <ul style="list-style-type: none">• ART & DESIGN (ART, CRAFT & DESIGN) - AQA• ART & DESIGN (PHOTOGRAPHY) - AQA• MUSIC - PEARSON EDEXCEL• FOOD & COOKERY – NCFE• PHOTOGRAPHY - AQA |



NOTICES

- ✓ Jeans for Genes on Friday 19th of September. £1 donation cash. Non-uniform.
- ✓ **Open Evening on Thursday 23rd of September 4-6pm. If you are a prefect, please see Mrs Stokes as you will be needed to help and if you are helping in VTC, please get a letter of consent for parents/carers to sign!**
- ✓ Prefects photographs this week – Ms Dunkerley will be organising these.
- ✓ Have you checked your emails from NYPEB?
- ✓ Have you logged onto the NYBEP portal?
- ✓ Have you applied for a work experience?
- ✓ **RITA** – needs to be at the heart of everything you do!

EXCEPTIONAL



**THE
SPECIAL 6**
STEPS TO EXCEPTIONAL

- ✓ **ATTENDANCE**
- ✓ **ATTITUDE TO LEARNING**
- ✓ **CONDUCT**
- ✓ **REWARDS**
- ✓ **EXTRA-CURRICULAR**
- ✓ **HEALTH**



Newsome Academy

General Expectations

- ✓ **No mobile phones AT ALL in school**
- ✓ If it is seen or used, it will be confiscated – just like any other school.
- ✓ Should any other 'smart device'

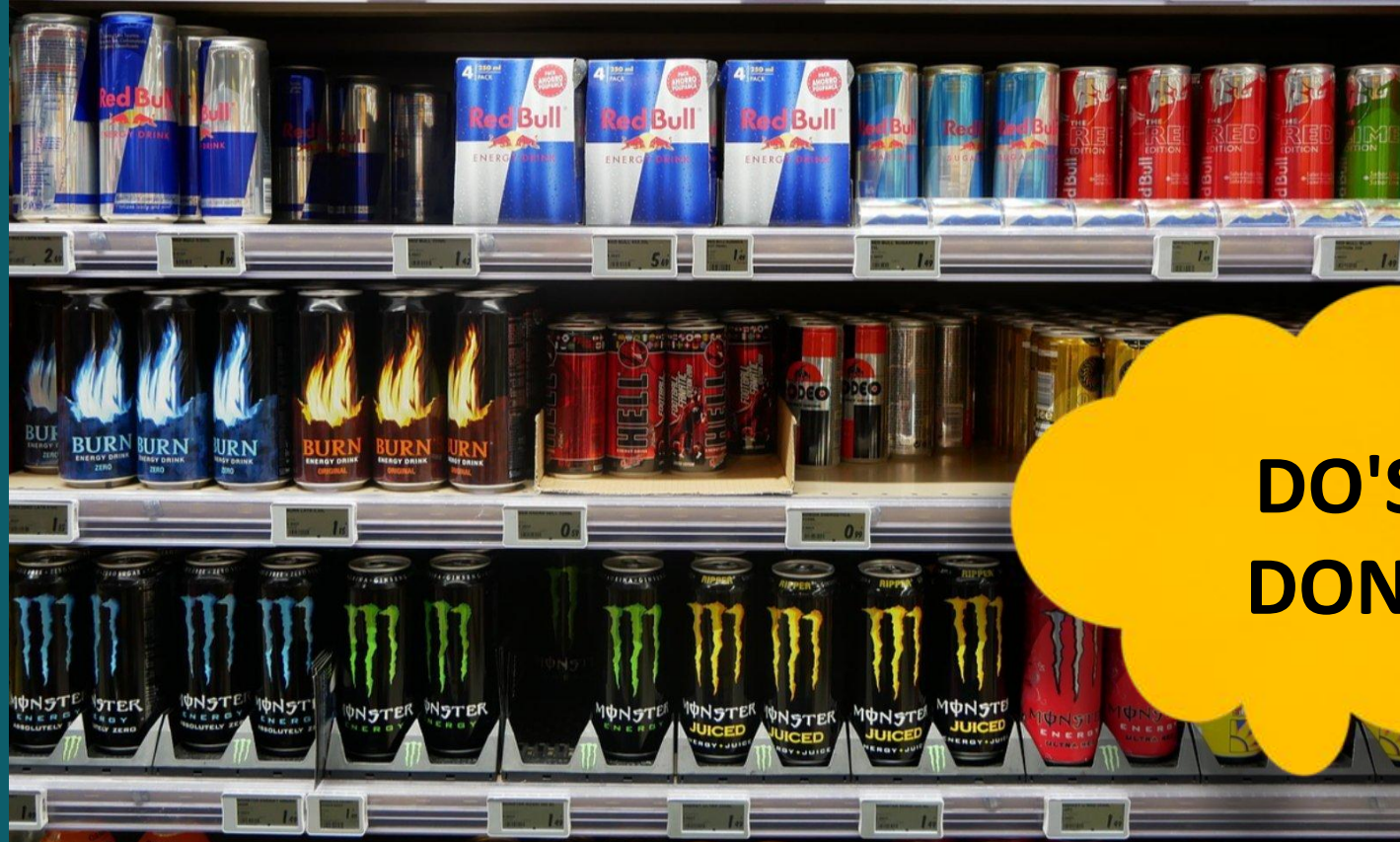




Newsome Academy

General Expectations

- ✓ No caffeine or energy drinks at all
- ✓ If there is any confusion, the school will assess whether it affects learning and will confiscate if it is 'unhealthy for learning'



**DO'S &
DON'TS**





Newsome Academy

General Expectations

- ✓ No excessive sweets and chocolate
- ✓ Families should support the school and their child's health and monitor sugar intake.
- ✓ If there is any confusion, the school will assess whether it affects learning and will confiscate if it is 'unhealthy for learning'



**DO'S &
DON'TS**





The Designated Safeguarding Leads @TNA

Miss Hall is the Designated Safeguarding Lead



Miss A Hall
DSL



Ms H Baxter
Deputy DSL



Ms R Leroy
Deputy DSL



Ms E Carter
Deputy DSL



Ms J Brook
Deputy DSL



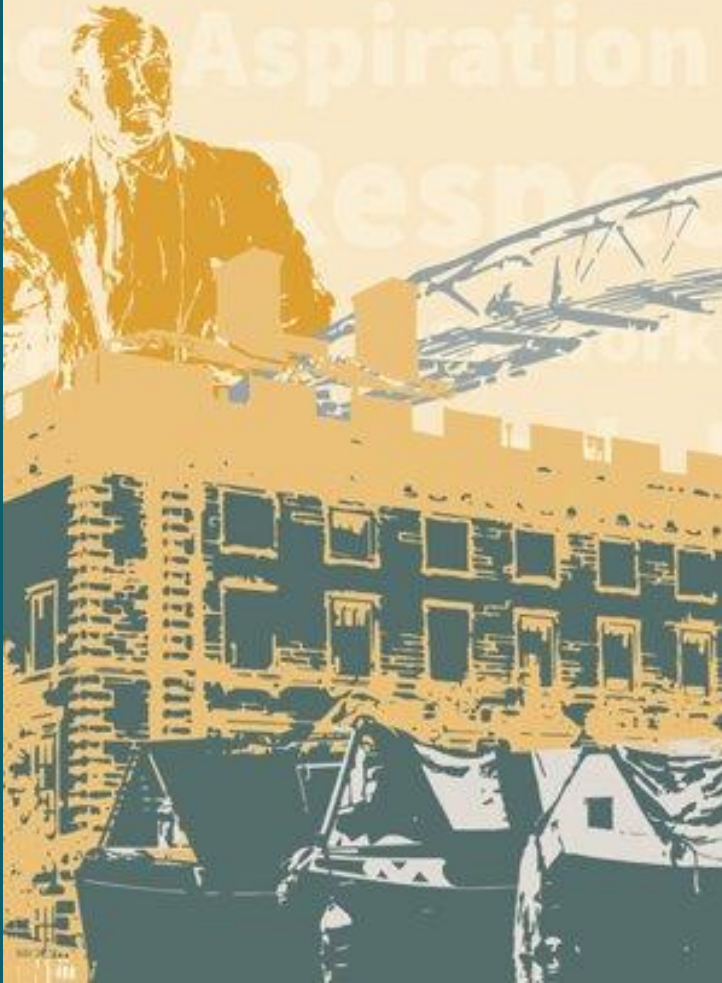
Ms G Coldwell
Deputy DSL

How can I keep Safe?

talk@newsomeacademy.co.uk



Newsome Academy



Have a **great** and **productive** week!

**Ms Fletcher, Mrs Stokes
& your Team Leaders**

**will be ensuring you are 100% focused
on your studies so that you excel in
your GCSE studies!**