



# FAMILY NEWS

Week 24b – Monday 9th March

## THEMES OF THE WEEK



*Reflect on how well we 'consistently' ensure these areas are embedded to ensure we are successful.*

- ✓ Ramadan
- ✓ Careers Week
- ✓ British Science Week
- ✓ Global Money & Sign Language Week
- ✓ World Math Day

# HOLIDAY INSET Y6 TRANSITION

2025					2026						
August	September	October	November	December	January	February	March	April	May	June	July
1 Fr	1 Mo <sup>36</sup>	1 We	1 Sa	1 Mo <sup>49</sup>	1 Th <sup>New Year's Day</sup>	1 Su	1 Su	1 We	1 Fr	1 Mo <sup>23</sup>	1 We
2 Sa	2 Tu	2 Th	2 Su	2 Tu	2 Fr	2 Mo <sup>6</sup>	2 Mo <sup>10</sup>	2 Th	2 Sa	2 Tu	2 Th
3 Su	3 We	3 Fr	3 Mo <sup>45</sup>	3 We	3 Sa	3 Tu	3 Tu	3 Fr <sup>Good Friday</sup>	3 Su	3 We	3 Fr
4 Mo <sup>32</sup>	4 Th	4 Sa	4 Tu	4 Th	4 Su	4 We	4 We	4 Sa	4 Mo <sup>Early May Bk. Hol.</sup> <sup>19</sup>	4 Th	4 Sa
5 Tu	5 Fr	5 Su	5 We	5 Fr	5 Mo <sup>2</sup>	5 Th	5 Th	5 Su	5 Tu	5 Fr	5 Su
6 We	6 Sa	6 Mo <sup>41</sup>	6 Th	6 Sa	6 Tu	6 Fr	6 Fr	6 Mo <sup>Easter Monday</sup> <sup>5</sup>	6 We	6 Sa	6 Mo <sup>28</sup>
7 Th	7 Su	7 Tu	7 Fr	7 Su	7 We	7 Sa	7 Sa	7 Tu	7 Th	7 Su	7 Tu
8 Fr	8 Mo <sup>37</sup>	8 We	8 Sa	8 Mo <sup>50</sup>	8 Th	8 Su	8 Su	8 Tu	8 Fr	8 Mo <sup>24</sup>	8 We
9 Sa	9 Tu	9 Th	9 Su	9 Tu	9 Fr	9 Mo <sup>7</sup>	9 Mo	9 Sa	9 Sa	9 Tu	9 Th
10 Su	10 We	10 Fr	10 Mo <sup>46</sup>	10 We	10 Sa	10 Tu	10 Tu	10 Su	10 Su	10 We	10 Fr
11 Mo <sup>33</sup>	11 Th	11 Sa	11 Tu	11 Th	11 Su	11 We	11 We	11 Sa	11 Mo <sup>20</sup>	11 Th	11 Sa
12 Tu	12 Fr	12 Su	12 We	12 Fr	12 Mo <sup>3</sup>	12 Th	12 Th	12 Su	12 Tu	12 Fr	12 Su
13 We	13 Sa	13 Mo <sup>42</sup>	13 Th	13 Sa	13 Tu	13 Fr	13 Fr	13 Mo <sup>1</sup> <sup>6</sup>	13 We	13 Sa	13 Mo <sup>29</sup>
14 Th	14 Su	14 Tu	14 Fr	14 Su	14 We	14 Sa	14 Sa	14 Tu	14 Th	14 Su	14 Tu
15 Fr	15 Mo <sup>38</sup>	15 We	15 Sa	15 Mo <sup>51</sup>	15 Th	15 Su	15 Su	15 We	15 Fr	15 Mo <sup>25</sup>	15 We
16 Sa	16 Tu	16 Th	16 Su	16 Tu	16 Fr	16 Mo <sup>8</sup>	16 Mo <sup>12</sup>	16 Th	16 Sa	16 Tu	16 Th
17 Su	17 We	17 Fr	17 Mo <sup>47</sup>	17 We	17 Sa	17 Tu	17 Tu	17 Fr	17 Su	17 We	17 Fr
18 Mo <sup>34</sup>	18 Th	18 Sa	18 Tu	18 Th	18 Su	18 We	18 We	18 Sa	18 Mo <sup>21</sup>	18 Th	18 Sa
19 Tu	19 Fr	19 Su	19 We	19 Fr	19 Mo <sup>4</sup>	19 Th	19 Th	19 Su	19 Tu	19 Fr	19 Su
20 We	20 Sa	20 Mo <sup>43</sup>	20 Th	20 Sa	20 Tu	20 Fr	20 Fr	20 Mo <sup>1</sup> <sup>7</sup>	20 We	20 Sa	20 Mo <sup>30</sup>
21 Th	21 Su	21 Tu	21 Fr	21 Su	21 We	21 Sa	21 Sa	21 Tu	21 Th	21 Su	21 Tu
22 Fr	22 Mo <sup>39</sup>	22 We	22 Sa	22 Mo <sup>52</sup>	22 Th	22 Su	22 Su	22 We	22 Fr	22 Mo <sup>26</sup>	22 We
23 Sa	23 Tu	23 Th	23 Su	23 Tu	23 Fr	23 Mo <sup>9</sup>	23 Mo <sup>13</sup>	23 Th	23 Sa	23 Tu	23 Th
24 Su	24 We	24 Fr	24 Mo <sup>48</sup>	24 We	24 Sa	24 Tu	24 Tu	24 Fr	24 Su	24 We	24 Fr
25 Mo <sup>August Bk. Hol.</sup> <sup>35</sup>	25 Th	25 Sa	25 Tu	25 Th <sup>Christmas Day</sup>	25 Su	25 We	25 We	25 Sa	25 Mo <sup>Spring Bk. Hol.</sup> <sup>22</sup>	25 Th	25 Sa
26 Tu	26 Fr	26 Su	26 We	26 Fr <sup>Boxing Day</sup>	26 Mo <sup>5</sup>	26 Th	26 Th	26 Su	26 Tu	26 Fr	26 Su
27 We	27 Sa	27 Mo <sup>44</sup>	27 Th	27 Sa	27 Tu	27 Fr	27 Fr	27 Mo <sup>1</sup> <sup>8</sup>	27 We	27 Sa	27 Mo <sup>31</sup>
28 Th	28 Su	28 Tu	28 Fr	28 Su	28 We	28 Sa	28 Sa	28 Tu	28 Th	28 Su	28 Tu
29 Fr	29 Mo <sup>40</sup>	29 We	29 Sa	29 Mo <sup>1</sup>	29 Th		29 Su	29 We	29 Fr	29 Mo <sup>27</sup>	29 We
30 Sa	30 Tu	30 Th	30 Su	30 Tu	30 Fr		30 Mo <sup>14</sup>	30 Th	30 Sa	30 Tu	30 Th
31 Su		31 Fr		31 We	31 Sa		31 Tu		31 Su		31 Fr



**3 WEEKS**

UNTIL EASTER BREAK

**0 WEEK**

UNTIL Y11 GCSE

MOCK 4

25TH FEB



**6 WEEKS**

UNTIL GCSE EXAMS

START

5TH MAY

**16 SCHOOL WEEKS**

UNTIL THE END OF  
SCHOOL YEAR

 Newsome Academy @NewsomeAcademy

Keisha H from our Partnership Company, the Lawrence Batley Theatre, came in to talk about her career journey to Yr8 today as part of Careers Week and opened up the theatre doors for opportunities our students can get involved with. 🥰




 Newsome Academy @NewsomeAcademy

Brilliant workshop by Huddersfield Literature Festival with Benaiah Matheson - now we are all inspired to be artists and writers! #Hlbase



# SPECIAL moments

 Newsome Academy @NewsomeAcademy

Yr9 have had an extra-special Careers Event today with The Inspirational Learning Group - TILG - coming in and working with them on a Nat West Business Challenge. Our winning team are off to Telford in July for the National finals 🥰



 Newsome Academy @NewsomeAcademy

World Book Day is being celebrated through Who Dunnit? Yr9 are investigating which teacher stole a treasured copy of ...



 Newsome Academy @NewsomeAcademy

Yr10 had a keynote speaker, Emily, from Kirklees College this morning for their Careers Week experience 🥰





Newsome Academy



**YEAR 11**  
**GCSE EVENTS**  
**THROUGHOUT**  
**THIS YEAR TO**  
**SUPPORT YOUR**  
**CHILD**

# YEAR 11 GCSE SUCCESS EVENINGS

## ENSURING THE BEST FOR YOUR CHILD

### Dear Families

Following on from last years' family GCSE sessions there will be several further events throughout this year to prepare your child for success in their GCSE's. This year, there will be a Mock result-issuing session after every set of Mock exams and there will also be general information giving at several points throughout the year. The next evening will be on 19th March 5-6pm.

<b>Event 1</b> <b>Thursday 9<sup>th</sup> October 5pm-6pm</b>	<b>Key Deadlines</b> <ul style="list-style-type: none"><li>• Preparation for October Mocks</li><li>• Home Run Initiative</li><li>• Period 6 information</li></ul>
<b>Event 2</b> <b>Thursday 27<sup>th</sup> November 5pm-6pm</b>	<b>October Mock Results</b> <ul style="list-style-type: none"><li>• Information sharing and understanding results</li><li>• How to support your child further</li></ul>
<b>Event 3</b> <b>Thursday 19<sup>th</sup> March 5pm-6pm</b>	<b>March Mock Results</b> <ul style="list-style-type: none"><li>• Information sharing and understanding results</li><li>• How to support your child further</li></ul>
<b>Event 4</b> <b>Thursday 30<sup>th</sup> April 5pm-6pm</b>	<b>Preparing for the real thing!</b> <ul style="list-style-type: none"><li>• Exam timings and protocol</li></ul>

# YEAR 11 FINAL MOCK EXAMS

- 2026

	9.00 Start	09:10 60m	P1	10.10 60m	P2	11.10 Break	11.30 60m	P3	12.30 60m	P4	13.30 Lunch	P5
Wed 25/02/2026		English - Language - Paper 1 (1hr 45m)						MFL - French/German - Listening Paper (F=35m H=45)	Extra time	To lesson		
Thur 26/02/2026		English - Literature - Paper 2 (2hr 15m)							To lesson			MFL - French/German - Listening (F=35m H=45)
Fri 27/02/2026		Combined Science Biology - Paper 1 (2 x topics) & Paper 2 (1hr 30m) Separate Biology - Paper 1 & 2 Bespoke (1hr 45m)						Maths - Paper 1 (1hr 30m)		Extra time (20m)	To lesson	

	9.00 Start	09:10 60m	P1	10.10 60m	P2	11.10 Break	11.30 60m	P3	12.30 60m	P4	13.30 Lunch	P5
Mon 02/03/2026		Maths - Paper 2 (1hr 30m)				Extra time (20m)	To lesson		History - Paper 1 (1hr 20m)	Extra time (20m)		
Tue 03/03/2026		RE - Paper 1 (1hr 45m)				Extra time (20m)	To lesson		MFL - French/German - Listening Paper (F=35m H=45)	Extra time (20m)	To lesson	
Wed 04/03/2026		Combined Science Chemistry - Paper 1 (2 x topics) & Paper 2 (1hr 30m) Separate Chemistry- Paper 1 & 2 Bespoke (1hr 45m)				Extra time (20m)	To lesson		Geography - Paper 1 (1hr 30m)	Extra time (20m)	To lesson	
Thur 05/03/2026		History - Paper 2 (1hr)				Extra time (20m)	To lesson		Geography - Paper 2 (1hr 30m)	Extra time (20m)	To lesson	
Fri 06/03/2026		Maths - Paper 3 (1hr 30m)				Extra time (20m)	To lesson		Geography- Paper 3 (50m)	To lesson		MFL - French/German - Listening (F=35m H=45)

# YEAR 11 FINAL MOCK EXAMS

	9.00 Start	9:10 P1 60m	10.10 P2 60m	11.10 Break	11.30 P3 60m	12.30 P4 60m	13.30 Lunch	P5 60m
<b>Mon</b> 3/9/2026		Combined Science Physics - Paper 1 (2 x topics) & Paper 2 (2 x topics) (1hr 30m) Separate Physics- Paper 1 & 2 Bespoke (1hr 45m)			Health & Fitness (1hr 30m)			
<b>Tue</b> 3/10/2026		English - Language - Paper 2 (1hr 45m)			Food Technology (1hr 30m)			
<b>Wed</b> 3/11/2026		RE - Paper 2 (1hr 45m)			Catch-up			
<b>Thur</b> 3/12/2026		Media (Course work)			Media (Course work)			Media (Course work)
<b>Fri</b> 3/13/2026		Travel & Tourism (2hrs)			Ext-break	Catch-up		
		Art (Controlled Assessment)			Art (Controlled Assessment)			Art (Controlled Assessment)
		Photography (Controlled Assessment)			Photography (Controlled Assessment)			Photography (Controlled Assessment)



**YEAR 10**  
**GCSE EVENTS**  
**THROUGHOUT**  
**THIS YEAR TO**  
**SUPPORT YOUR**  
**CHILD**

# YEAR 10 GCSE SUCCESS EVENINGS

## ENSURING THE BEST FOR YOUR CHILD

### Dear Families

Following on from last years' family GCSE sessions there will be several further events throughout this year to prepare your child for success in their GCSE's. This year, there will be a Mock result-issuing session after every set of Mock exams and there will also be general information giving at several points throughout the year.

<p><b>Event 1</b>  <b>HT2 – Thurs. 13th November - 5pm - 6pm</b></p>	<p><b>Intro to GCSE Year</b></p> <ul style="list-style-type: none"> <li>• Preparation for Mocks</li> <li>• Race to Exceptional Initiative</li> <li>• Work Experience</li> </ul>
<p><b>Event 2</b>  <b>Thursday 5th March 5pm-6pm</b></p>	<p><b>February Mock results and Parents' Evening</b></p> <ul style="list-style-type: none"> <li>• Information sharing and understanding results</li> <li>• How to support your child further</li> </ul>
<p><b>Event 3</b>  <b>Monday 18th May 5pm - 6pm</b></p>	<p><b>Work Experience preparation ( w/c 8th June)</b></p> <ul style="list-style-type: none"> <li>• Final prep for Work Experience</li> <li>• How to support your child further</li> </ul>
<p><b>Event 4</b>  <b>Thursday 9th July (5pm – 6pm)</b></p>	<p><b>June Mock results</b></p> <ul style="list-style-type: none"> <li>• Exam timings and protocol</li> </ul>

# GCSEs and beyond



readingplus®

**Week commencing February 23rd** - Certificates provided for top 2 students per class for most time spent reading lessons on Reading Plus. (Between 23/02/26 - 06/03/26)

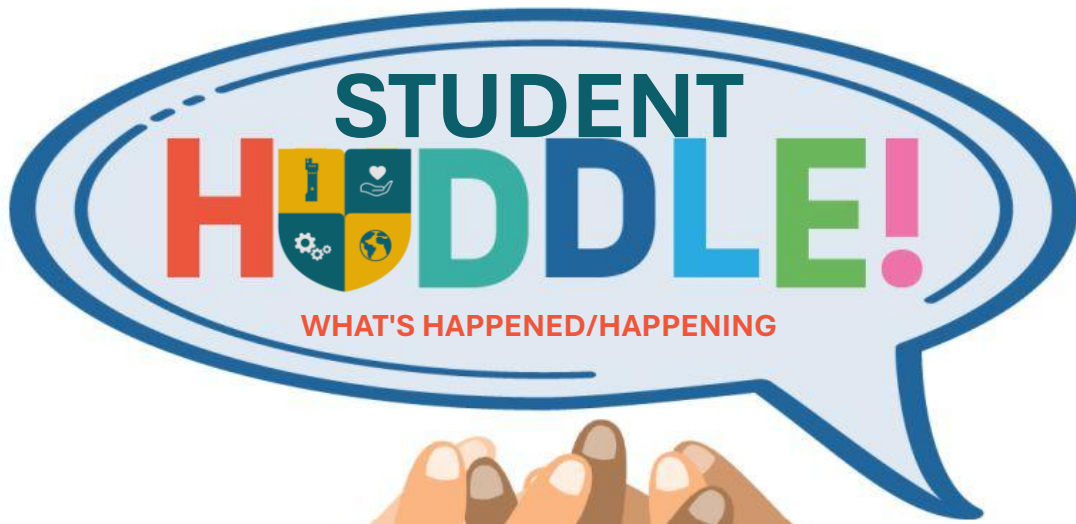
**Week commencing March 9th** - Certificates provided for top 2 students per class for most reading lessons completed on Reading Plus. (Between 09/03/26 - 20/03/26)

**Week commencing March 23rd** - Certificates provided for top 2 students per class for total highest words read on Reading Plus. (Between 23/02/26 - 20/03/26)

**End of term-** Certificate provided for top 3 students per year group for highest reading level gained.

# WEEKLY UPDATE

## WEEK STARTING 2nd March



- **RED NOSE DAY** - a letter has gone out to families - be sure you have got your money ready to join in all the fun activities in 2 weeks time – information on the next slide.



- **WHOLE SCHOOL SEMINAR** – back in the Sports Hall from next week
- **STUDENT SURVEY** - ALL students are required to complete the Young Peoples knowledge of drugs and alcohol in Kirklees survey, which will be uploaded to all Year Groups in Teams - please remind students to complete this by the close of March.



**RED NOSE WEEK 16<sup>th</sup> to 20<sup>th</sup> of March 2026**



Newsome Academy's Page  
 Comic Relief - Red Nose Day 2006



Dear Parents/Carers,

We will be celebrating COMIC RELIEF Day/Week 2026 for an entire week here at Newsome Academy with the theme this year of 'Take yourself **funny** for money'.

We welcome your fabulous support in ensuring that we, at least, make the £250 mark set by Comic Relief themselves, which you can, for the first time, check by scanning the QR code at the top of this letter. All **donations** no matter how small or LARGE, will make a considerable difference to those less fortunate than us and especially, as we celebrate RAMADAN and LENT, this is a time when 'Just Giving' counts.

**So, what do the Newsome staff have up their sleeves ... for this week?**

**MONDAY 16<sup>th</sup> of March**

- **LAUNCH of 'guess how many sweets are in the jar'** (a favourite event from last year and the person who guesses the nearest amount simply wins the sweets). We will also have a sweet hamper at £1 a strip – both these events will run all week, and the winners will be announced on Finale Friday!

**TUESDAY 17<sup>th</sup> of March**

- **Penalty shoot-out** with staff in goal! For £1, students will be able to fire up to 3 shots at the staff member in the goal, and should a student score a hat-trick, they will receive a certificate and a treat.

**WEDNESDAY 18<sup>th</sup> of March**

- **Crazy hair and accessories day** – students must wear their uniform as usual with a twist for £1

**FRIDAY 20<sup>th</sup> of March –donation FINALE**

- **CULTURE DAY** – on Friday the 20<sup>th</sup> – to celebrate all cultures, especially for those celebrating EID, we encourage all students and staff to wear cultural clothes for the normal £1 donation on the day!
- **FREE FINALE** on Friday the 20<sup>th</sup> in the morning, where KS3 and KS4 will have separate concerts by Charlie Aky – singer-song writer from Leeds – please check him out [here](#) - you won't want your child to miss this!
- **STAFF MASKED SINGER** – Period 5 on the 20<sup>th</sup> in the Lecture Theatre, however there are only 170 tickets available, and they will be sold on a first come first serve basis at the gifted cost of £1.50, especially sold by Ms Carter herself!

With all the above and more, and the reason why we are running this charity event all week, is to ensure all students have the chance to participate in any or **all** of the events and to ultimately raise as much money as we can, so please encourage your child to bring in their donations.

As always, thank you for your continued support and please do use the QR code to donate yourselves!

Yours faithfully,



Mrs K Stokes  
 Assistant Headteacher

# EXCEPTIONAL



**THE  
SPECIAL 6**  
STEPS TO EXCEPTIONAL

- ✓ ATTENDANCE
- ✓ ATTITUDE TO LEARNING
- ✓ CONDUCT
- ✓ REWARDS
- ✓ EXTRA-CURRICULAR
- ✓ HEALTH



# MINDS ET

MASTERY



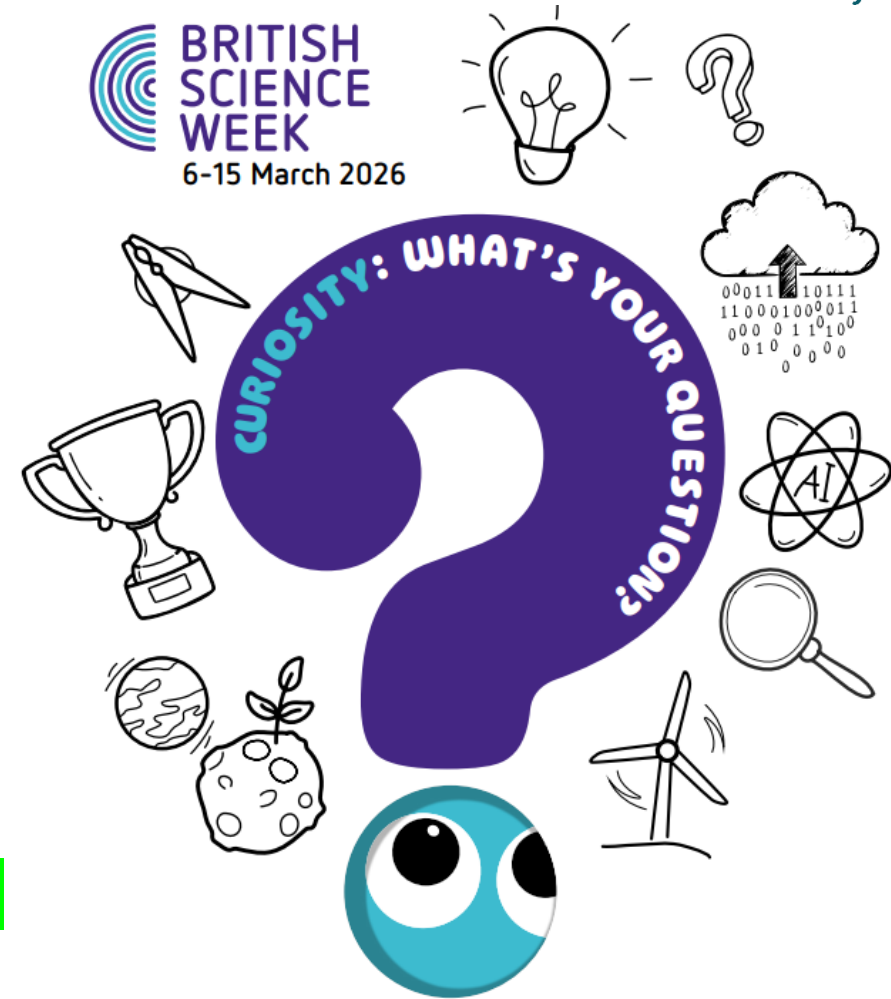


**Fundamental British Values** underpin what it is to be a citizen in a modern and diverse Great Britain valuing our community and celebrating diversity of the UK. These 5 values are:  
**Democracy, Rule of Law, Mutual Respect, Tolerance, Individual Liberty.**

**Which FBV does the theme of 'Careers' link with?**



Newsome Academy





**Fundamental British Values** underpin what it is to be a citizen in a modern and diverse Great Britain valuing our community and celebrating diversity of the UK. These 5 values are: Democracy, Rule of Law, Individual Liberty, Mutual Respect and Tolerance.



Newsome Academy

#### 1. Democracy

- 'Rule by the people'
- Making decisions together (voting)
- The right to voice your opinion

#### 2. Rule of Law

- Understand and obey the rules set by the government to develop order



#### 5. Tolerance

- Respecting different faiths and cultures
- Understanding that we don't all share the same beliefs and values and not imposing ours on others

#### 4. Mutual Respect

- To treat people politely and thoughtfully, to show we value them
- Seeing things from someone else's viewpoint

#### 3. Individual Liberty

- The right to believe, act and express oneself freely
- The right to freedom of speech
- The right to vote





British Science week is a ten-day celebration of science, technology, engineering and maths that will take place between 6-15 March 2026.

This year the theme is

***‘Curiosity: What’s your question?’***

It puts children and young people in the driver’s seat and tries to encourage you to find answers to the most pressing questions you have about the world.

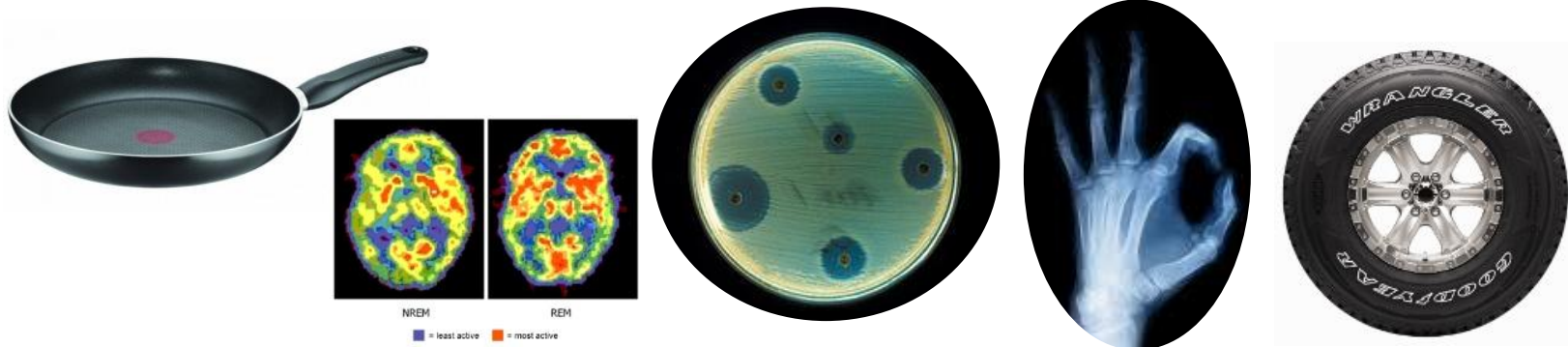


Curiosity is the desire to know more. Asking questions like:

- How do our brains lose memory?
- How big is a black hole?
- How does Bluetooth work?
- Why is the ocean salty?

These are some of the questions asked by our KS3 STEM Ambassadors.

Curiosity is the starting point of every discovery.



Care and support through terminal illness



So...

...what's something you have wondered about recently?

- Questions help your brain remember information
- Curiosity leads to experiments
- Asking questions leads to better solutions and technology

You just need to start here!



# The 'Curiosity Mindset'

To improve your curiosity mindset, you have to train it. Just like you would a muscle.

- Ask better questions – instead of 'What is the answer?', ask 'Why is that the answer?'
- Follow interesting ideas – research it, watch a video, ask someone
- And be okay with not knowing – most scientists spend their lives not knowing the answer **yet**



# The 5 Whys

Train your curiosity with asking yourself 'Why' five times before you stop.

Example: Plants need sunlight.

Why? → For photosynthesis

Why? → To make glucose

Why? → To release energy

Why? → To grow and survive

Why? → Because cells need energy



## Your questions matter

Some of the biggest discoveries started with a simple question. Can you name the curious minds that asked them?

Why do apples fall? **Isaac Newton**

How do some diseases spread? **Louis Pasteur / Robert Koch**

What are stars made of? **Cecilia Payne-Gaposchkin**

How does electricity move? **Michael Faraday**

Your question today could be the discovery your career becomes based on.



## What's on during British Science Week at Newsome?

- Newsome will once again be hatching chicks! Chick cam is back
- Year 7 will be completing their STEM project: Chicken coops next week
- Year 8 will be completing a Curious investigation into natural indicators to investigate acids and alkalis
- Year 9-11 will have STEM Brainboxes to complete during the week



1. What does STEM stand for? (1 point)	6. What is the hardest natural substance found on Earth?(2 points)	9. Which planet in the solar system has the most moons? (3 points)
4.What two things do magnets do? (2 points)	8. Which group of animals give birth to premature young that develop in pouches(3 points)	11. Which mathematical number system is the language computers use (4 points)
2.What is an animal that only eats plants? (1 point)	7. What do red blood cells do(2 points)	10. Which branch of engineering designs roads and bridges? (3 points)
5. What scale is used to measure the strength of an earthquake?(2 points)	3. What substance is sometimes known as CO <sub>2</sub> ? (1 point)	12. Where does the energy come from in a hydroelectric power station? (4 points)



# What's on during British Science Week at Newsome?

Poster competition

**Deadline: 27<sup>th</sup> March 2026 3:30pm**

This year's poster competition is about answering one of these questions:

- What makes children's lives positive?
- What will a positive childhood look like in the future for young people your age?



What's on during British Science Week at Newsome?

Poster competition

**Deadline: 27<sup>th</sup> March 2026 3:30pm**

### **Success criteria**

- A4 or A3 poster
- Physical or digital (**emailed to [egardner@newsomeacademy.co.uk](mailto:egardner@newsomeacademy.co.uk)**)
- 503 will be open on Thursdays until 4pm with poster supplies

**One entry from each year group will be selected to be entered by the school.**

You can enter your poster with an adult at home if you don't win.



# What's on during British Science Week at Newsome?

Whole school – ‘Find the Curious Minds’ competition  
Staff members have a curious mind badge attached to them.  
You need to find as many as you can by Friday and write them onto the sheet you will even

Bonus challenge: Can you work out what the different colours mean?



Helen Sharman



Name: \_\_\_\_\_

Form: \_\_\_\_\_

## Curiosity Hunt

Members of staff are wearing badges with information about famous explorers, discoveries & people who made important discoveries.

You need to hunt for the information on those badges!

The student with the most correct information will win a prize.

Good luck!

	Curious mind	Reason		Curious mind	Reason
1			24		
2			25		
3			26		
4			27		
5			28		
6			29		
7			30		

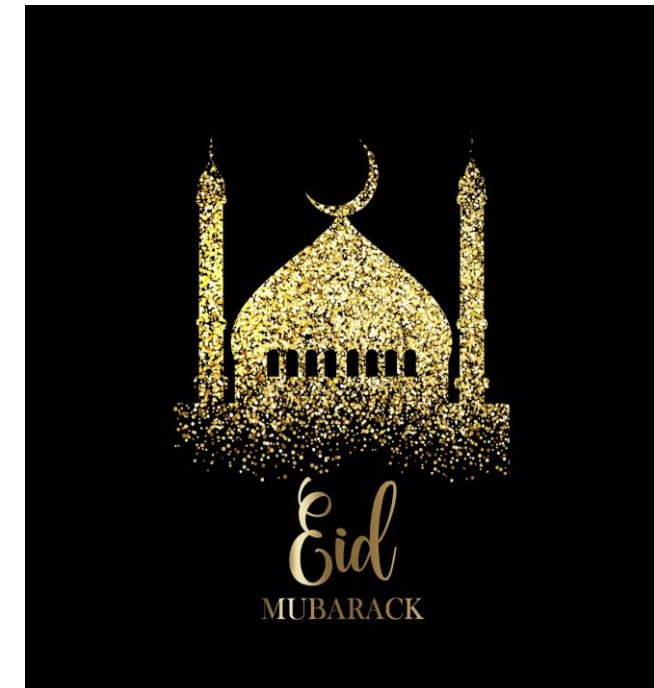
Wishing you a  
blessed month!



Prayers will be held in the **LIBRARY** during lunch  
at the following times below:

**KS3: 12:30pm to 1pm**

**KS4: 1:30pm to 2pm**





**EXTRA-CURRICULAR TIMETABLE**

**SPRING TERM 2 2025-2026**



# Extra-Curricular Activities: Spring Term 2 25/26



DAY	CLUB	LOCATION	STAFF	P6 Week A	P6 Week B
MONDAY	<ul style="list-style-type: none"> <li>• Netball After exams</li> <li>• DOFE</li> <li>• Cooking Club</li> <li>• Writing Club</li> <li>• Chess Club</li> </ul>	<ul style="list-style-type: none"> <li>• Sports Hall</li> <li>• Fitness suite</li> <li>• Cooking Room</li> <li>• Library</li> <li>• Library</li> </ul>	<ul style="list-style-type: none"> <li>• HRA/SMT</li> <li>• JDA/GEA</li> <li>• JBA</li> <li>• ASQ</li> <li>• NLA</li> </ul>	Option A	Option D
TUESDAY	<ul style="list-style-type: none"> <li>• Wheelchair sports club</li> <li>• Music Club (Invite Only)</li> <li>• KS3 Coding Club</li> <li>• 10W Maths club (invite only)</li> </ul>	<ul style="list-style-type: none"> <li>• Sports Hall</li> <li>• 401</li> <li>• 608</li> <li>• 407</li> </ul>	<ul style="list-style-type: none"> <li>• SCU</li> <li>• AMC</li> <li>• OMO</li> <li>• MAS</li> </ul>	Science	Science
WEDNESDAY	<ul style="list-style-type: none"> <li>• 7/8 Girls Football</li> <li>• BSL Club</li> <li>• STEM on Track (Invite only)</li> <li>• Music Club</li> <li>• PRIDE club – Week A lunch time</li> <li>• Fitness</li> </ul>	<ul style="list-style-type: none"> <li>• Astro</li> <li>• 805</li> <li>• Lecture Theatre</li> <li>• 401</li> <li>• 302</li> <li>• Fitness suite</li> </ul>	<ul style="list-style-type: none"> <li>• HRA/HH</li> <li>• DCR/ SHE</li> <li>• EGA</li> <li>• AMC</li> <li>• CBR</li> <li>• JDA,BD</li> </ul>	Maths	Maths
THURSDAY	<ul style="list-style-type: none"> <li>• YR 10 H&amp;S</li> <li>• IDEA Lab</li> <li>• Singing Club</li> <li>• Drama Club</li> <li>• Sparx Support Club</li> </ul>	<ul style="list-style-type: none"> <li>• 606</li> <li>• 503</li> <li>• 401</li> <li>• Lecture Theatre</li> <li>• 402</li> </ul>	<ul style="list-style-type: none"> <li>• SMT</li> <li>• EGA</li> <li>• ECO/CBR</li> <li>• LAB/BRO</li> <li>• EBU</li> </ul>	English	English
FRIDAY	<ul style="list-style-type: none"> <li>• Student Council KS3 – Week A lunch</li> <li>• Student Council KS4 – Week A lunch</li> </ul>	<ul style="list-style-type: none"> <li>• 302</li> <li>• 302</li> </ul>	<ul style="list-style-type: none"> <li>• CBR</li> <li>• CBR</li> </ul>	Option B	Option C



# The Designated Safeguarding Leads @TNA

Miss Hall is the Designated Safeguarding Lead



**Miss A Hall**  
DSL



**Ms H Baxter**  
Deputy DSL



**Ms R Leroy**  
Deputy DSL



**Ms E Carter**  
Deputy DSL



**Ms J Brook**  
Deputy DSL



**Ms G Coldwell**  
Deputy DSL

How can I keep Safe?

[talk@newsomeacademy.co.uk](mailto:talk@newsomeacademy.co.uk)