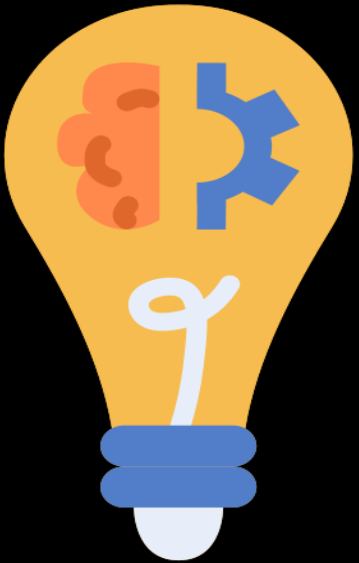




FAMILY NEWS

Week 25a – Monday 16th March

THEMES OF THE WEEK



Reflect on how well we 'consistently' ensure these areas are embedded to ensure we are successful.

- ✓ Ramadan
- ✓ Careers Week
- ✓ British Science Week
- ✓ Global Money & Sign Language Week
- ✓ World Math Day

HOLIDAY INSET Y6 TRANSITION

2025					2026						
August	September	October	November	December	January	February	March	April	May	June	July
1 Fr	1 Mo ³⁶	1 We	1 Sa	1 Mo ⁴⁹	1 Th ^{New Year's Day}	1 Su	1 Su	1 We	1 Fr	1 Mo ²³	1 We
2 Sa	2 Tu	2 Th	2 Su	2 Tu	2 Fr	2 Mo ⁶	2 Mo ¹⁰	2 Th	2 Sa	2 Tu	2 Th
3 Su	3 We	3 Fr	3 Mo ⁴⁵	3 We	3 Sa	3 Tu	3 Tu	3 Fr ^{Good Friday}	3 Su	3 We	3 Fr
4 Mo ³²	4 Th	4 Sa	4 Tu	4 Th	4 Su	4 We	4 We	4 Sa	4 Mo ^{Early May Bk. Hol.} ¹⁹	4 Th	4 Sa
5 Tu	5 Fr	5 Su	5 We	5 Fr	5 Mo ²	5 Th	5 Th	5 Su	5 Tu	5 Fr	5 Su
6 We	6 Sa	6 Mo ⁴¹	6 Th	6 Sa	6 Tu	6 Fr	6 Fr	6 Mo ^{Easter Monday} ⁵	6 We	6 Sa	6 Mo ²⁸
7 Th	7 Su	7 Tu	7 Fr	7 Su	7 We	7 Sa	7 Sa	7 Tu	7 Th	7 Su	7 Tu
8 Fr	8 Mo ³⁷	8 We	8 Sa	8 Mo ⁵⁰	8 Th	8 Su	8 Su	8 We	8 Fr	8 Mo ²⁴	8 We
9 Sa	9 Tu	9 Th	9 Su	9 Tu	9 Fr	9 Mo ⁷	9 Mo ¹¹	9 Th	9 Sa	9 Tu	9 Th
10 Su	10 We	10 Fr	10 Mo ⁴⁶	10 We	10 Sa	10 Tu	10 Tu	10 Fr	10 Su	10 We	10 Fr
11 Mo ³³	11 Th	11 Sa	11 Tu	11 Th	11 Su	11 We	11 We	11 Sa	11 Mo ²⁰	11 Th	11 Sa
12 Tu	12 Fr	12 Su	12 We	12 Fr	12 Mo ³	12 Th	12 Th	12 Su	12 Tu	12 Fr	12 Su
13 We	13 Sa	13 Mo ⁴²	13 Th	13 Sa	13 Tu	13 Fr	13 Fr	13 Mo ¹ ⁶	13 We	13 Sa	13 Mo ²⁹
14 Th	14 Su	14 Tu	14 Fr	14 Su	14 We	14 Sa	14 Sa	14 Tu	14 Th	14 Su	14 Tu
15 Fr	15 Mo ³⁸	15 We	15 Sa	15 Mo ⁵¹	15 Th	15 Su	15 Su	15 We	15 Fr	15 Mo ²⁵	15 We
16 Sa	16 Tu	16 Th	16 Su	16 Tu	16 Fr	16 Mo ⁸	16 Mo	16 Sa	16 Sa	16 Tu	16 Th
17 Su	17 We	17 Fr	17 Mo ⁴⁷	17 We	17 Sa	17 Tu	17 Tu	17 Su	17 Su	17 We	17 Fr
18 Mo ³⁴	18 Th	18 Sa	18 Tu	18 Th	18 Su	18 We	18 We	18 Sa	18 Mo ²¹	18 Th	18 Sa
19 Tu	19 Fr	19 Su	19 We	19 Fr	19 Mo ⁴	19 Th	19 Th	19 Su	19 Tu	19 Fr	19 Su
20 We	20 Sa	20 Mo ⁴³	20 Th	20 Sa	20 Tu	20 Fr	20 Fr	20 Mo ¹ ⁷	20 We	20 Sa	20 Mo ³⁰
21 Th	21 Su	21 Tu	21 Fr	21 Su	21 We	21 Sa	21 Sa	21 Tu	21 Th	21 Su	21 Tu
22 Fr	22 Mo ³⁹	22 We	22 Sa	22 Mo ⁵²	22 Th	22 Su	22 Su	22 We	22 Fr	22 Mo ²⁶	22 We
23 Sa	23 Tu	23 Th	23 Su	23 Tu	23 Fr	23 Mo ⁹	23 Mo ¹³	23 Th	23 Sa	23 Tu	23 Th
24 Su	24 We	24 Fr	24 Mo ⁴⁸	24 We	24 Sa	24 Tu	24 Tu	24 Fr	24 Su	24 We	24 Fr
25 Mo ^{August Bk. Hol.} ³⁵	25 Th	25 Sa	25 Tu	25 Th ^{Christmas Day}	25 Su	25 We	25 We	25 Sa	25 Mo ^{Spring Bk. Hol.} ²²	25 Th	25 Sa
26 Tu	26 Fr	26 Su	26 We	26 Fr ^{Boxing Day}	26 Mo ⁵	26 Th	26 Th	26 Su	26 Tu	26 Fr	26 Su
27 We	27 Sa	27 Mo ⁴⁴	27 Th	27 Sa	27 Tu	27 Fr	27 Fr	27 Mo ¹ ⁸	27 We	27 Sa	27 Mo ³¹
28 Th	28 Su	28 Tu	28 Fr	28 Su	28 We	28 Sa	28 Sa	28 Tu	28 Th	28 Su	28 Tu
29 Fr	29 Mo ⁴⁰	29 We	29 Sa	29 Mo ¹	29 Th		29 Su	29 We	29 Fr	29 Mo ²⁷	29 We
30 Sa	30 Tu	30 Th	30 Su	30 Tu	30 Fr		30 Mo ¹⁴	30 Th	30 Sa	30 Tu	30 Th
31 Su		31 Fr		31 We	31 Sa		31 Tu		31 Su		31 Fr

WE ARE HERE



2 WEEKS

UNTIL EASTER BREAK



5 WEEKS

UNTIL GCSE EXAMS

START

5TH MAY

15 SCHOOL WEEKS

UNTIL THE END OF
SCHOOL YEAR



Newsome Academy @NewsomeAcademy

All ready for a first day of skiing!! 🏂



SPECIAL moments



Newsome Academy @Newsom... · 2d
Student council at the town hall at welcome to vote week.



Newsome Academy @Newsom... · 2d
Our Mothers Day shop was in full swing today. All proceeds go towards Year 11 Prom 🥰



Newsome Academy @Newsome... · 1d
Today was a good dayY11 received their Prom invites!! 🥰🥰



5 306



Newsome Academy @Newsome... · 1d
Our Science chicks are wide awake - took no time to hatch and say hello to the world 🥰



Newsome Academy @Newsom... · 12h
Mr A announcing the winners of the first Yr10 race to exceptional 🥰 Well done to Ammendolia's Musketeers for winning! 🙌





**YEAR 11
GCSE EVENTS
THROUGHOUT
THIS YEAR TO
SUPPORT YOUR
CHILD**

YEAR 11 GCSE SUCCESS EVENINGS

ENSURING THE BEST FOR YOUR CHILD

Dear Families

Following on from last years' family GCSE sessions there will be several further events throughout this year to prepare your child for success in their GCSE's. This year, there will be a Mock result-issuing session after every set of Mock exams and there will also be general information giving at several points throughout the year. The next evening will be on 19th March 5-6pm.

Event 1 Thursday 9th October 5pm-6pm	Key Deadlines <ul style="list-style-type: none"> Preparation for October Mocks Home Run Initiative Period 6 information
Event 2 Thursday 27th November 5pm-6pm	October Mock Results <ul style="list-style-type: none"> Information sharing and understanding results How to support your child further
Event 3 Thursday 26th March 5pm-6pm	March Mock Results <ul style="list-style-type: none"> Information sharing and understanding results How to support your child further
Event 4 Thursday 30th April 5pm-6pm	Preparing for the real thing! <ul style="list-style-type: none"> Exam timings and protocol



YEAR 10
GCSE EVENTS
THROUGHOUT
THIS YEAR TO
SUPPORT YOUR
CHILD

YEAR 10 GCSE SUCCESS EVENINGS

ENSURING THE BEST FOR YOUR CHILD

Dear Families

Following on from last years' family GCSE sessions there will be several further events throughout this year to prepare your child for success in their GCSE's. This year, there will be a Mock result-issuing session after every set of Mock exams and there will also be general information giving at several points throughout the year.

<p>Event 1 HT2 – Thurs. 13th November - 5pm - 6pm</p>	<p>Intro to GCSE Year</p> <ul style="list-style-type: none"> • Preparation for Mocks • Race to Exceptional Initiative • Work Experience
<p>Event 2 Thursday 5th March 5pm-6pm</p>	<p>February Mock results and Parents' Evening</p> <ul style="list-style-type: none"> • Information sharing and understanding results • How to support your child further
<p>Event 3 Monday 18th May 5pm - 6pm</p>	<p>Work Experience preparation (w/c 8th June)</p> <ul style="list-style-type: none"> • Final prep for Work Experience • How to support your child further
<p>Event 4 Thursday 9th July (5pm – 6pm)</p>	<p>June Mock results</p> <ul style="list-style-type: none"> • Exam timings and protocol

GCSEs and beyond



readingplus®

Week commencing February 23rd - Certificates provided for top 2 students per class for most time spent reading lessons on Reading Plus. (Between 23/02/26 - 06/03/26)

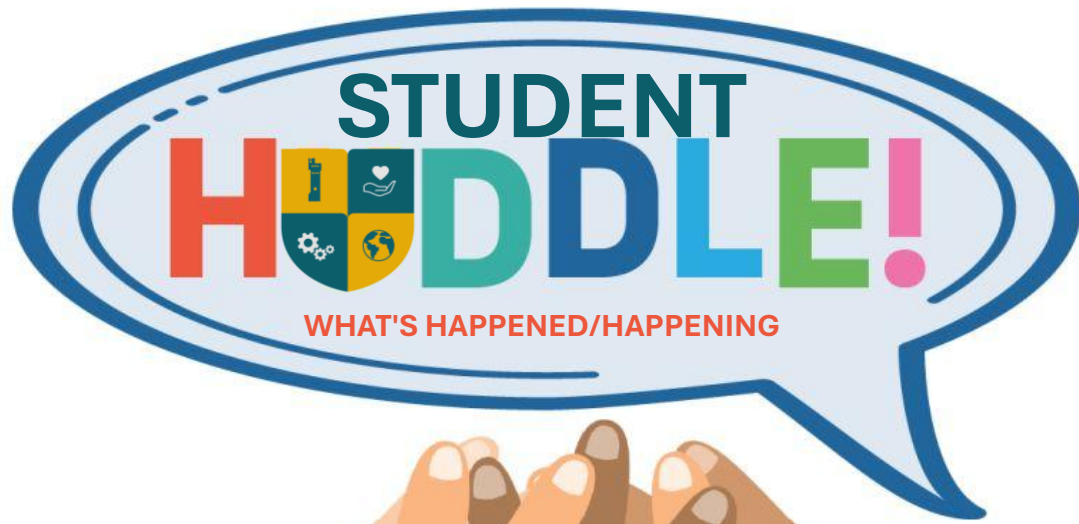
Week commencing March 9th - Certificates provided for top 2 students per class for most reading lessons completed on Reading Plus. (Between 09/03/26 - 20/03/26)

Week commencing March 23rd - Certificates provided for top 2 students per class for total highest words read on Reading Plus. (Between 23/02/26 - 20/03/26)

End of term- Certificate provided for top 3 students per year group for highest reading level gained.

WEEKLY UPDATE

WEEK STARTING 16th March



- **RED NOSE DAY** - Exciting events all start from today! YOU will need to bring in £1 for Friday the 20th of March which will be our Culture Day and bring in money if you are getting involved in any of the other events this week! All proceeds will be going straight to our 'Just Giving Page'.



- **STUDENT SURVEY** - ALL students are required to complete the Young Peoples knowledge of drugs and alcohol in Kirklees survey, which will be uploaded to all Year Groups in Teams - please remind students to complete this by the close of March.

A horizontal banner containing several logos and graphics. From left to right: a neon sign that says 'UPCOMING EVENTS'; three colorful location pin icons; a 'Routines' graphic with various heart-shaped icons and the text 'A sequence of actions regularly followed'; the 'SENDIA Inclusion Award' logo; the 'WAS Wellbeing Award for Schools' logo, which includes the text 'in partnership with NATIONAL CHILDREN'S BUREAU' and 'Promote emotional wellbeing and mental health across your school'; the 'HomeRun YEAR 11 GCSE STRATEGY' logo with the tagline 'A TEAM SPIRIT APPROACH CONNECTING HEARTS & MINDS' and 'ORGANISATION | PREPARATION | MOTIVATION'; and finally, a 'PROM' logo with a castle icon.

RED NOSE WEEK 16th to 20th of March 2026



Dear Parents/Carers,

We will be celebrating COMIC RELIEF Day/Week 2026 for an entire week here at Newsome Academy with the theme this year of 'Take yourself **funny** for money'.

We welcome your fabulous support in ensuring that we, at least, make the £250 mark set by Comic Relief themselves, which you can, for the first time, check by scanning the QR code at the top of this letter. All **donations** no matter how small or LARGE, will make a considerable difference to those less fortunate than us and especially, as we celebrate RAMADAN and LENT, this is a time when 'Just Giving' counts.

So, what do the Newsome staff have up their sleeves ... for this week?

MONDAY 16th of March

- **LAUNCH of 'guess how many sweets are in the jar'** (a favourite event from last year and the person who guesses the nearest amount simply wins the sweets). We will also have a sweet hamper at £1 a strip – both these events will run all week, and the winners will be announced on Finale Friday!

TUESDAY 17th of March

- **Penalty shoot-out** with staff in goal! For £1, students will be able to fire up to 3 shots at the staff member in the goal, and should a student score a hat-trick, they will receive a certificate and a treat.

WEDNESDAY 18th of March

- **Crazy hair and accessories day** – students must wear their uniform as usual with a twist for £1

FRIDAY 20th of March –donation FINALE

- **CULTURE DAY** – on Friday the 20th – to celebrate all cultures, especially for those celebrating EID, we encourage all students and staff to wear cultural clothes for the normal £1 donation on the day!
- **FREE FINALE** on Friday the 20th in the morning, where KS3 and KS4 will have separate concerts by Charlie Aky – singer-song writer from Leeds – please check him out [here](#) - you won't want your child to miss this!
- **STAFF MASKED SINGER** – Period 5 on the 20th in the Lecture Theatre, however there are only 170 tickets available, and they will be sold on a first come first serve basis at the gifted cost of £1.50, especially sold by Ms Carter herself!

With all the above and more, and the reason why we are running this charity event all week, is to ensure all students have the chance to participate in any or all of the events and to ultimately raise as much money as we can, so please encourage your child to bring in their donations.

As always, thank you for your continued support and please do use the QR code to donate yourselves!

Yours faithfully,



Mrs K Stokes
 Assistant Headteacher



CHARLIE AKY
COMING TO YOUR SCHOOL ON
Friday 20th March P1 (KS4) P2 (KS3)
NEW SINGLE **PERFUME REGRET** OUT 13th MARCH



  lamcharlieaky   charlieaky

DATE: Friday 20th March, 2026

LOCATION: Sports Hall

TIME: P1 – 09:10-10:10 KS4; P2 – 10:30 – 11:30 KS3

EXCEPTIONAL



**THE
SPECIAL 6**
STEPS TO EXCEPTIONAL

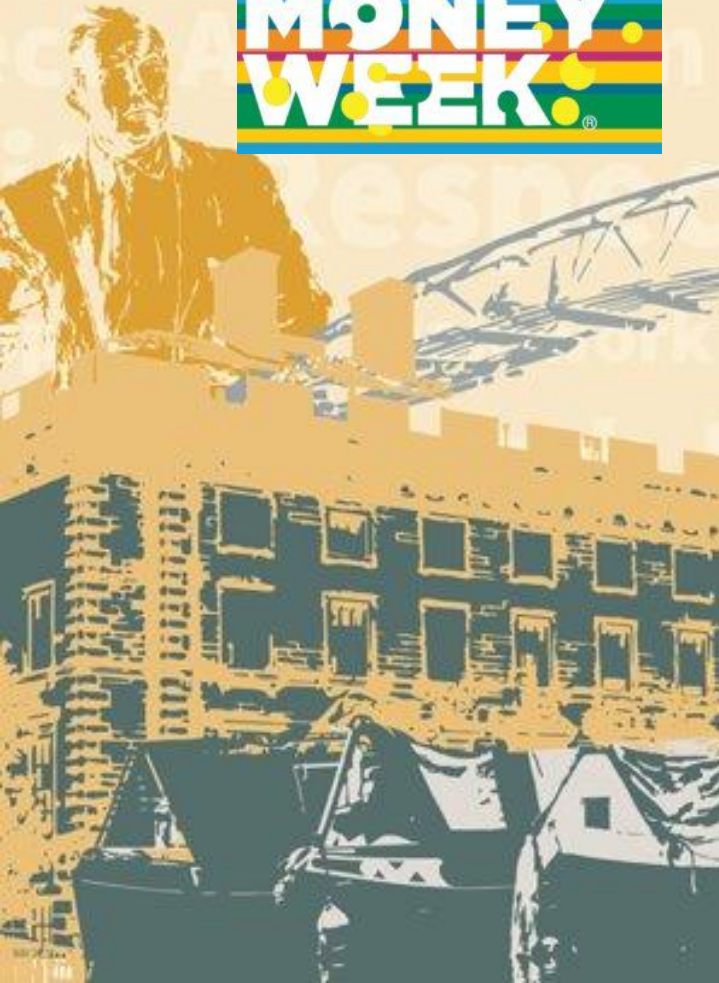
- ✓ **ATTENDANCE**
- ✓ **ATTITUDE TO LEARNING**
- ✓ **CONDUCT**
- ✓ **REWARDS**
- ✓ **EXTRA-CURRICULAR**
- ✓ **HEALTH**



MINDS ET

M A S T E R Y





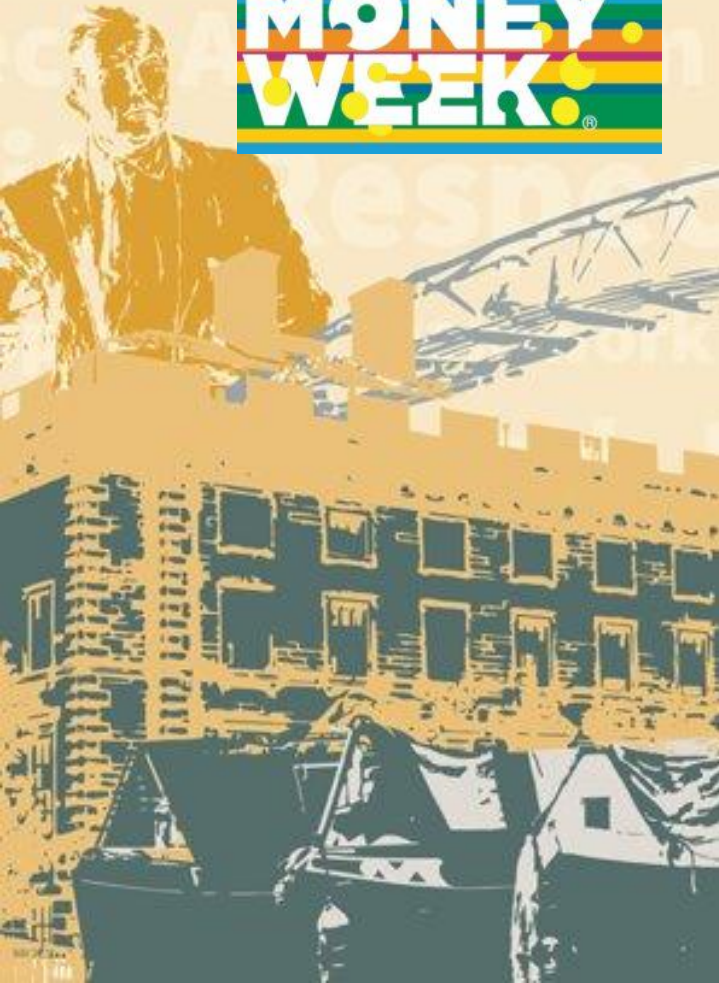
Fundamental British Values underpin what it is to be a citizen in a modern and diverse Great Britain valuing our community and celebrating diversity of the UK. These 5 values are:
Democracy, Rule of Law, Mutual Respect, Tolerance, Individual Liberty.

Which FBV does the theme of 'Global Money Week' link with?



Newsome Academy





Fundamental British Values underpin what it is to be a citizen in a modern and diverse Great Britain valuing our community and celebrating diversity of the UK. These 5 values are: Democracy, Rule of Law, Individual Liberty, Mutual Respect and Tolerance.

1. Democracy
- 'Rule by the people'
 - Making decisions together (voting)
 - The right to voice your opinion

2. Rule of Law
- Understand and obey the rules set by the government to develop order



5. Tolerance
- Respecting different faiths and cultures
 - Understanding that we don't all share the same beliefs and values and not imposing ours on others

4. Mutual Respect
- To treat people politely and thoughtfully, to show we value them
 - Seeing things from someone else's viewpoint

3. Individual Liberty
- The right to believe, act and express oneself freely
 - The right to freedom of speech
 - The right to vote

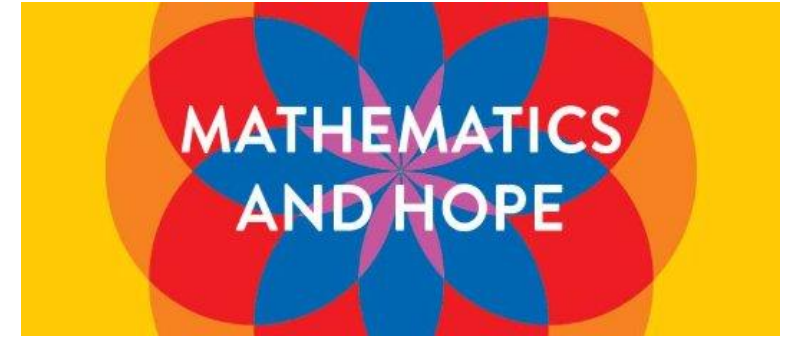




International Day of Mathematics



14th March 2026



MATHEMATICS AND HOPE

Every year we announce a theme to flavour the celebration, spark creativity and bring light to connections between mathematics and all sorts of fields, concepts and ideas.

Thales said, "Hope is the most universal of all human possessions." More than 2,500 years later, we can also say that mathematics is one of the most universal human possessions.

Connecting hope and mathematics creates opportunities for deeper insight and knowledge. Mathematics gives us hope to understand reality and truth clearly, share common definitions, learn cooperation, use data responsibly, find win-win strategies, and more.



Usually there is a creative challenge associated with International maths day but there isn't one this year, so Ms Burton chose this poem instead!





GLOBAL MONEY WEEK

16th – 22nd March



- **Global Money Week:** An annual campaign held in over 120 countries to raise awareness about financial literacy among children and youth.

Set up by:

Child & Youth Finance International

Child & Youth Finance International (CYFI) is a global non-profit organization founded in 2012 and headquartered in Amsterdam, Netherlands. It leads the Child and Youth Finance Movement, working across 150 countries to advance financial inclusion, financial education, and economic citizenship among children and young people.



GMW is an annual global awareness-raising campaign to ensure that young people, from an early age, are financially aware, and are gradually acquiring the knowledge, skills, attitudes and behaviours necessary to make sound financial decisions and ultimately achieve financial well-being and financial resilience.



So, what are we doing at Newsome to educate our young people about their finances?

Financial Education for Young People

<https://themoneycharity.org.uk/>



Visits for Year 10 and Year 8 after Easter

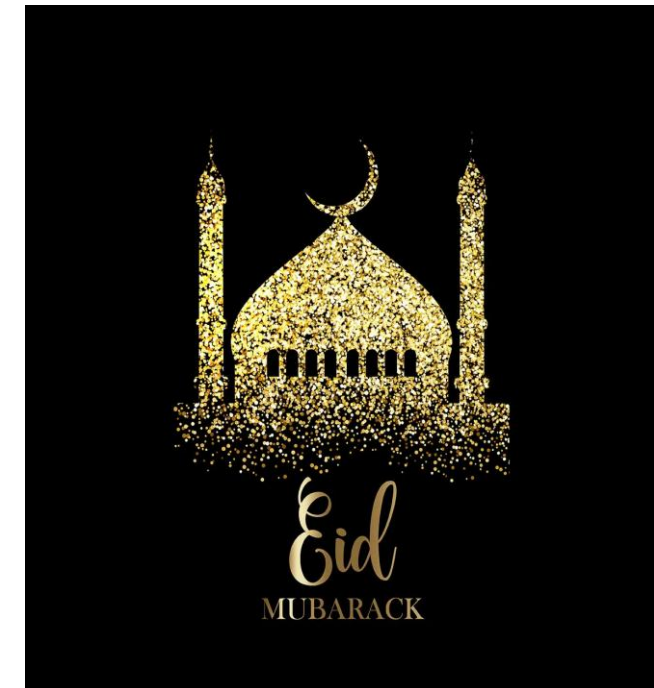
Year 10s will be learning about
'Moving out and Making Decisions'

Year 8's will be completing the Savings
Sorted workshop

Prayers will be held in the **LIBRARY** during lunch
at the following times below:

KS3: 12:30pm to 1pm

KS4: 1:30pm to 2pm



EID MUBARAK!



*May Allah bless you with a
joyous, healthy, and peaceful
Eid.*

EID MUBARAK!



ঈদ মোবারক!



EXTRA-CURRICULAR TIMETABLE

SPRING TERM 2 2025-2026



Extra-Curricular Activities: Spring Term 2 25/26



DAY	CLUB	LOCATION	STAFF	P6 Week A	P6 Week B
MONDAY	<ul style="list-style-type: none"> • Netball After exams • DOFE • Cooking Club • Writing Club • Chess Club 	<ul style="list-style-type: none"> • Sports Hall • Fitness suite • Cooking Room • Library • Library 	<ul style="list-style-type: none"> • HRA/SMT • JDA/GEA • JBA • ASQ • NLA 	Option A	Option D
TUESDAY	<ul style="list-style-type: none"> • Wheelchair sports club • Music Club (Invite Only) • KS3 Coding Club • 10W Maths club (invite only) 	<ul style="list-style-type: none"> • Sports Hall • 401 • 608 • 407 	<ul style="list-style-type: none"> • SCU • AMC • OMO • MAS 	Science	Science
WEDNESDAY	<ul style="list-style-type: none"> • 7/8 Girls Football • BSL Club • STEM on Track (Invite only) • Music Club • PRIDE club – Week A lunch time • Fitness 	<ul style="list-style-type: none"> • Astro • 805 • Lecture Theatre • 401 • 302 • Fitness suite 	<ul style="list-style-type: none"> • HRA/HH • DCR/ SHE • EGA • AMC • CBR • JDA,BD 	Maths	Maths
THURSDAY	<ul style="list-style-type: none"> • YR 10 H&S • IDEA Lab • Singing Club • Drama Club • Sparx Support Club 	<ul style="list-style-type: none"> • 606 • 503 • 401 • Lecture Theatre • 402 	<ul style="list-style-type: none"> • SMT • EGA • ECO/CBR • LAB/BRO • EBU 	English	English
FRIDAY	<ul style="list-style-type: none"> • Student Council KS3 – Week A lunch • Student Council KS4 – Week A lunch 	<ul style="list-style-type: none"> • 302 • 302 	<ul style="list-style-type: none"> • CBR • CBR 	Option B	Option C



The Designated Safeguarding Leads @TNA

Miss Hall is the Designated Safeguarding Lead



Miss A Hall
DSL



Ms H Baxter
Deputy DSL



Ms R Leroy
Deputy DSL



Ms E Carter
Deputy DSL



Ms J Brook
Deputy DSL



Ms G Coldwell
Deputy DSL

How can I keep Safe?

talk@newsomeacademy.co.uk