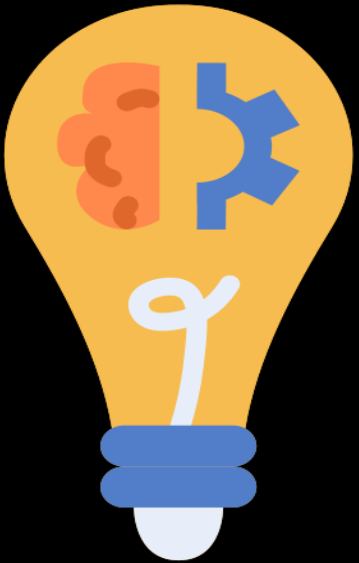




# FAMILY NEWS

Week 27a – Monday 13th of April

## THEMES OF THE WEEK



*Reflect on how well we 'consistently' ensure our routines are embedded to ensure we are successful.*

- ✓ Welcome back!
- ✓ World Creativity & Innovation Day
- ✓ London Marathon
- ✓ Local Community & History Month
- ✓ Mental Health Awareness Week
- ✓ World Orienteering Week

# HOLIDAY INSET Y6 TRANSITION

2025					2026						
August	September	October	November	December	January	February	March	April	May	June	July
1 Fr	1 Mo <sup>36</sup>	1 We	1 Sa	1 Mo <sup>49</sup>	1 Th <sup>New Year's Day</sup>	1 Su	1 Su	1 We	1 Fr	1 Mo <sup>23</sup>	1 We
2 Sa	2 Tu	2 Th	2 Su	2 Tu	2 Fr	2 Mo <sup>6</sup>	2 Mo <sup>10</sup>	2 Th	2 Sa	2 Tu	2 Th
3 Su	3 We	3 Fr	3 Mo <sup>45</sup>	3 We	3 Sa	3 Tu	3 Tu	3 Fr <sup>Good Friday</sup>	3 Su	3 We	3 Fr
4 Mo <sup>32</sup>	4 Th	4 Sa	4 Tu	4 Th	4 Su	4 We	4 We	4 Sa	4 Mo <sup>Early May Bk. Hol.</sup> <sup>19</sup>	4 Th	4 Sa
5 Tu	5 Fr	5 Su	5 We	5 Fr	5 Mo <sup>2</sup>	5 Th	5 Th	5 Su	5 Tu	5 Fr	5 Su
6 We	6 Sa	6 Mo <sup>41</sup>	6 Th	6 Sa	6 Tu	6 Fr	6 Fr	6 Mo <sup>Easter Monday</sup> <sup>5</sup>	6 We	6 Sa	6 Mo <sup>28</sup>
7 Th	7 Su	7 Tu	7 Fr	7 Su	7 We	7 Sa	7 Sa	7 Tu	7 Th	7 Su	7 Tu
8 Fr	8 Mo <sup>37</sup>	8 We	8 Sa	8 Mo <sup>50</sup>	8 Th	8 Su	8 Su	8 We	8 Fr	8 Mo <sup>24</sup>	8 We
9 Sa	9 Tu	9 Th	9 Su	9 Tu	9 Fr	9 Mo <sup>7</sup>	9 Mo <sup>11</sup>	9 Th	9 Sa	9 Tu	9 Th
10 Su	10 We	10 Fr	10 Mo <sup>46</sup>	10 We	10 Sa	10 Tu	10 Tu	10 Fr	10 Su	10 We	10 Fr
11 Mo <sup>33</sup>	11 Th	11 Sa	11 Tu	11 Th	11 Su	11 We	11 We	11 Sa	11 Mo <sup>20</sup>	11 Th	11 Sa
12 Tu	12 Fr	12 Su	12 We	12 Fr	12 Mo <sup>3</sup>	12 Th	12 Th	12 Su	12 Mo <sup>20</sup>	12 Fr	12 Su
13 We	13 Sa	13 Mo <sup>42</sup>	13 Th	13 Sa	13 Tu	13 Fr	13 Fr	13 Mo	13 Mo <sup>25</sup>	13 Sa	13 Mo <sup>29</sup>
14 Th	14 Su	14 Tu	14 Fr	14 Su	14 We	14 Sa	14 Sa	14 Tu	14 Tu	14 Su	14 Tu
15 Fr	15 Mo <sup>38</sup>	15 We	15 Sa	15 Mo <sup>51</sup>	15 Th	15 Su	15 Su	15 We	15 We	15 Mo <sup>25</sup>	15 We
16 Sa	16 Tu	16 Th	16 Su	16 Tu	16 Fr	16 Mo <sup>8</sup>	16 Mo <sup>12</sup>	16 Th	16 Sa	16 Tu	16 Th
17 Su	17 We	17 Fr	17 Mo <sup>47</sup>	17 We	17 Sa	17 Tu	17 Tu	17 Fr	17 Su	17 We	17 Fr
18 Mo <sup>34</sup>	18 Th	18 Sa	18 Tu	18 Th	18 Su	18 We	18 We	18 Sa	18 Mo <sup>21</sup>	18 Th	18 Sa
19 Tu	19 Fr	19 Su	19 We	19 Fr	19 Mo <sup>4</sup>	19 Th	19 Th	19 Su	19 Tu	19 Fr	19 Su
20 We	20 Sa	20 Mo <sup>43</sup>	20 Th	20 Sa	20 Tu	20 Fr	20 Fr	20 Mo <sup>7</sup>	20 We	20 Sa	20 Mo <sup>30</sup>
21 Th	21 Su	21 Tu	21 Fr	21 Su	21 We	21 Sa	21 Sa	21 Tu	21 Th	21 Su	21 Tu
22 Fr	22 Mo <sup>39</sup>	22 We	22 Sa	22 Mo <sup>52</sup>	22 Th	22 Su	22 Su	22 We	22 Fr	22 Mo <sup>26</sup>	22 We
23 Sa	23 Tu	23 Th	23 Su	23 Tu	23 Fr	23 Mo <sup>9</sup>	23 Mo <sup>13</sup>	23 Th	23 Sa	23 Tu	23 Th
24 Su	24 We	24 Fr	24 Mo <sup>48</sup>	24 We	24 Sa	24 Tu	24 Tu	24 Fr	24 Su	24 We	24 Fr
25 Mo <sup>August Bk. Hol.</sup> <sup>35</sup>	25 Th	25 Sa	25 Tu	25 Th <sup>Christmas Day</sup>	25 Su	25 We	25 We	25 Sa	25 Mo <sup>Spring Bk. Hol.</sup> <sup>22</sup>	25 Th	25 Sa
26 Tu	26 Fr	26 Su	26 We	26 Fr <sup>Boxing Day</sup>	26 Mo <sup>5</sup>	26 Th	26 Th	26 Su	26 Tu	26 Fr	26 Su
27 We	27 Sa	27 Mo <sup>44</sup>	27 Th	27 Sa	27 Tu	27 Fr	27 Fr	27 Mo <sup>8</sup>	27 We	27 Sa	27 Mo <sup>31</sup>
28 Th	28 Su	28 Tu	28 Fr	28 Su	28 We	28 Sa	28 Sa	28 Tu	28 Th	28 Su	28 Tu
29 Fr	29 Mo <sup>40</sup>	29 We	29 Sa	29 Mo <sup>1</sup>	29 Th		29 Su	29 We	29 Fr	29 Mo <sup>27</sup>	29 We
30 Sa	30 Tu	30 Th	30 Su	30 Tu	30 Fr		30 Mo <sup>14</sup>	30 Th	30 Sa	30 Tu	30 Th
31 Su		31 Fr		31 We	31 Sa		31 Tu		31 Su		31 Fr

**WE ARE HERE**



**6 WEEKS**

UNTIL MAY HALF-TERM

**3 WEEKS**

UNTIL GCSE EXAMS START  
5TH MAY



**13 SCHOOL WEEKS**

UNTIL THE END OF SCHOOL YEAR

A full house of families for tonight's Year 11 Mock Results Evening. 😊



Thank you to families who attended this evening's Y11 session. This was the 4th out of 5 additional GCSE sessions held this year - more than ever before! The info can be seen here: <https://newsomeacademy.co.uk/wp-content/uploads/2026/03/Y11-...>



 **FAMILY EVENTS FOR KEY STAGE 4**

✓ Important dates to attend to support your child in their GCSE studies

YEAR 11 KEY EVENTS	
<b>Event 1</b> Thursday 9 <sup>th</sup> October 5pm-8pm	<b>Key Deadlines</b> <ul style="list-style-type: none"> <li>Preparation for October Mocks</li> <li>Home Study Schedule</li> <li>Parental Information</li> </ul>
<b>Event 2</b> Thursday 27 <sup>th</sup> November 5pm-8pm	<b>October Mock Results</b> <ul style="list-style-type: none"> <li>Information sharing and understanding results</li> <li>How to support your child further</li> </ul>
<b>Event 3</b> Thursday 12 <sup>th</sup> February 4pm-7pm	<b>Preparation for FINAL Mocks</b> <ul style="list-style-type: none"> <li>Add Internal Progress Reports (IAR)</li> <li>Home Study Information</li> <li>Guiding your child at home</li> </ul>
<b>Event 4</b> Thursday 26 <sup>th</sup> March 5pm-8pm	<b>March Mock Results</b> <ul style="list-style-type: none"> <li>Information sharing and understanding results</li> <li>How to support your child further to run up to exams</li> </ul>
<b>Event 5</b> Thursday 26 <sup>th</sup> April 5pm-8pm	<b>Preparing for the real thing!</b> <ul style="list-style-type: none"> <li>Exam Strategy and practice</li> </ul>

Some of our Y11 Food & Cookery Students, proudly showing off our new School logo embroidered aprons! 🌟🌟🌟



🌱 Science Week 🌱 The children designed and built protective capsules to prevent an egg from cracking when dropped from a great height. A HUGE thank you to our wonderful neighbours @NewsomeAcademy and their Science team for planning and inviting us to take part in the challenge! ❤️



Spreading our Academy and @ImpactMAT vision on more of our corridors 😊





**YEAR 11  
GCSE EVENTS  
THROUGHOUT  
THIS YEAR TO  
SUPPORT YOUR  
CHILD**

# YEAR 11 GCSE SUCCESS EVENINGS

## ENSURING THE BEST FOR YOUR CHILD

### Dear Families

Following on from last years' family GCSE sessions there will be several further events throughout this year to prepare your child for success in their GCSE's. This year, there will be a Mock result-issuing session after every set of Mock exams and there will also be general information giving at several points throughout the year. The next evening will be on 19th March 5-6pm.

<p><b>Event 1</b> Thursday 9<sup>th</sup> October 5pm-6pm</p>	<p><b>Key Deadlines</b></p> <ul style="list-style-type: none"> <li>Preparation for October Mocks</li> <li>Home Run Initiative</li> <li>Period 6 information</li> </ul>
<p><b>Event 2</b> Thursday 27<sup>th</sup> November 5pm-6pm</p>	<p><b>October Mock Results</b></p> <ul style="list-style-type: none"> <li>Information sharing and understanding results</li> <li>How to support your child further</li> </ul>
<p><b>Event 3</b> Thursday 26<sup>th</sup> March 5pm-6pm</p>	<p><b>March Mock Results</b></p> <ul style="list-style-type: none"> <li>Information sharing and understanding results</li> <li>How to support your child further</li> </ul>
<p><b>Event 4</b> Thursday 30<sup>th</sup> April 5pm-6pm</p>	<p><b>Preparing for the real thing!</b></p> <ul style="list-style-type: none"> <li>Exam timings and protocol</li> </ul>



**YEAR 10**  
**GCSE EVENTS**  
**THROUGHOUT**  
**THIS YEAR TO**  
**SUPPORT YOUR**  
**CHILD**

# YEAR 10 GCSE SUCCESS EVENINGS

## ENSURING THE BEST FOR YOUR CHILD

### Dear Families

Following on from last years' family GCSE sessions there will be several further events throughout this year to prepare your child for success in their GCSE's. This year, there will be a Mock result-issuing session after every set of Mock exams and there will also be general information giving at several points throughout the year.

<p><b>Event 1</b>  <b>HT2 – Thurs. 13th November - 5pm - 6pm</b></p>	<p><b>Intro to GCSE Year</b></p> <ul style="list-style-type: none"> <li>• Preparation for Mocks</li> <li>• Race to Exceptional Initiative</li> <li>• Work Experience</li> </ul>
<p><b>Event 2</b>  <b>Thursday 5th March 5pm-6pm</b></p>	<p><b>February Mock results and Parents' Evening</b></p> <ul style="list-style-type: none"> <li>• Information sharing and understanding results</li> <li>• How to support your child further</li> </ul>
<p><b>Event 3</b>  <b>Monday 18th May 5pm - 6pm</b></p>	<p><b>Work Experience preparation ( w/c 8th June)</b></p> <ul style="list-style-type: none"> <li>• Final prep for Work Experience</li> <li>• How to support your child further</li> </ul>
<p><b>Event 4</b>  <b>Thursday 9th July (5pm – 6pm)</b></p>	<p><b>June Mock results</b></p> <ul style="list-style-type: none"> <li>• Exam timings and protocol</li> </ul>

# GCSEs and beyond



readingplus®

**Week commencing April 13th** - Certificates provided for top 2 students per class for most time spent reading lessons on Reading Plus. (Between 13/04/26 - 01/05/26)

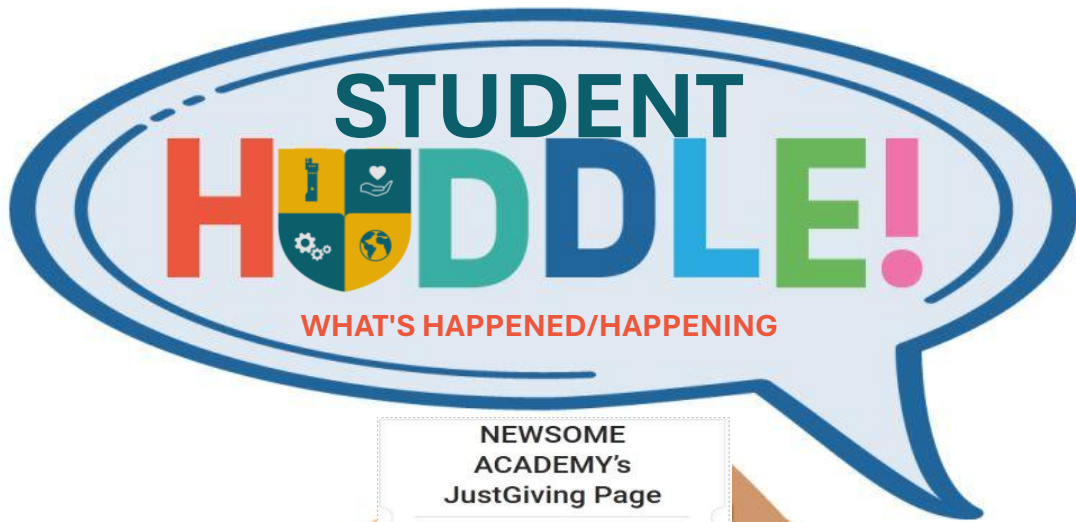
**Week commencing April 4th** - Certificates provided for top 2 students per class for most reading lessons completed on Reading Plus. (Between 04/05/26 - 15/05/26)

**Week commencing April 18th** - Certificates provided for top 2 students per class for total highest words read on Reading Plus. (Between 18/04/26 - 21/05/26)

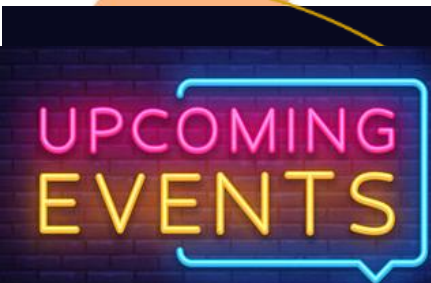
**End of term- Certificate provided for top 3 students per year group for highest reading level gained.**

# WEEKLY UPDATE

## WEEK STARTING 13th April



- **THANK YOU!** – YOU have all raised **£834!** Amazing!
- **Yr8 Parents Evening** - Please ensure your families have booked their appointments with teachers through BROMCOM. Thursday 16th of April between 4:30-6pm
- **Yr 8 CAREERS DAY** - all day on Thursday 23rd of April in the LRC – delivered by our external visitors, TILG - The Inspirational Learning Group
- **Yr 7 Parents Evening** – this is on Thursday 30th of April between 4:30-6pm and letters will go out for bookings on BROMCOM in the next 2 weeks.
- **Yr 10 Work Experience Information Evening** – Monday 18th of May, 5-6pm
- **Whole school seminars** – Will be moving to Team Time WC 05.05.26, as exams begin on Friday the 1st
- **Bank Holiday Monday** – is on Monday 4th of May – school will be **CLOSED!**

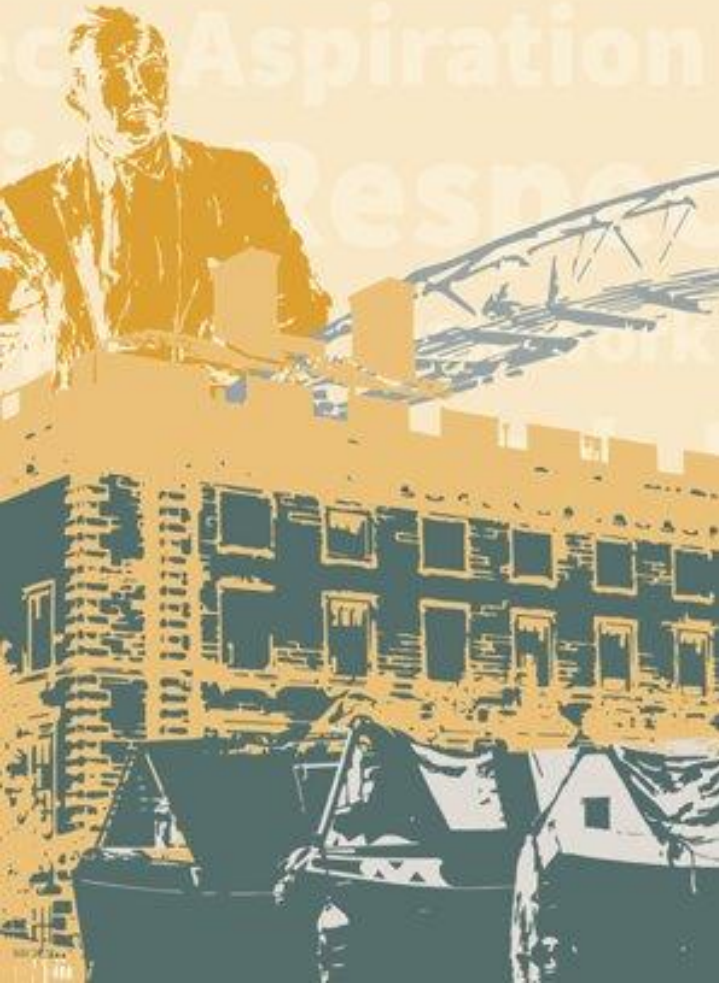




**Before the main seminar begins, we have some unfortunate news, as we have members of our family, destroying the local conservation area and we need to make sure we all protect it!**

### **White Rose Forest in Newsome**

All around the Newsome area, saplings of native British trees were planted by local groups between 2023 - 2025. The project is funded by The White Rose Partnership Agreement Project which includes, among others, the UK Government and Kirklees Council. These trees will help grow the White Rose Forest of West and North Yorkshire. The White Rose Forest will form the largest part of the Northern Forest which when completed will stretch across the country from Liverpool in the west to the Yorkshire coast in the east.





The north has far less woodland than other areas of England and The Northern Forest will help our young people and future generations reap the rewards of an even more beautiful and sustainable landscape which will enrich the lives of everyone who lives, works, explores, learns and plays there. Planting native British trees is one of the best natural ways to achieve this:

- ✓ Trees slow down climate change
- ✓ Trees reduce pollution and improve air quality
- ✓ Trees reduce the risk of flooding by absorbing rainwater and helping to prevent soil erosion
- ✓ Trees support all forms of wildlife



Not everyone understands the importance of creating a future forest. Recently, around Newsome, large areas of newly planted saplings have

---

been deliberately damaged, uprooted, trampled, discarded and left to die. The area is now a sad, litter strewn site of dead trees.

It is not feasible for the growing forest to be monitored to prevent vandalism, instead, it would be in everyone's interest to take pride and ownership in looking after and nurturing the infant forest because it is for the benefit of local people.





What do you think?

How should the remaining trees be protected to ensure the next and future generations reap the rewards of a forested land?

Reference: White Rose Partnership Agreement Programme, Community Forest Trust, Kirklees Council, UK Government, Woodland Trust

# EXCEPTIONAL



**THE  
SPECIAL 6**  
STEPS TO EXCEPTIONAL

- ✓ **ATTENDANCE**
- ✓ **ATTITUDE TO LEARNING**
- ✓ **CONDUCT**
- ✓ **REWARDS**
- ✓ **EXTRA-CURRICULAR**
- ✓ **HEALTH**



# MIN D S E T

M A S T E R Y

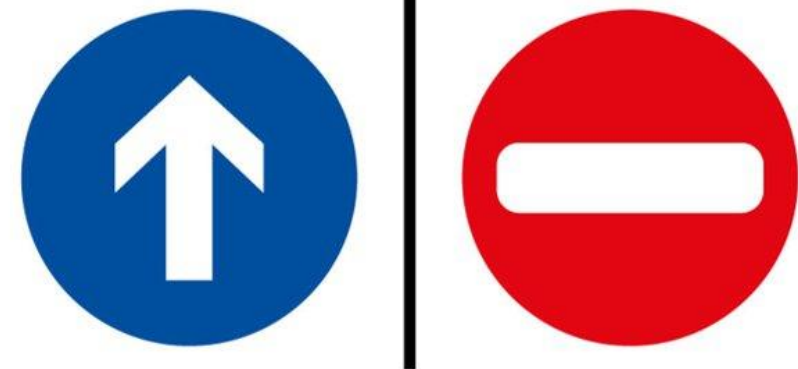




**Fundamental British Values**  
underpin what it is to be a  
citizen in a modern and  
diverse Great Britain valuing  
our community and  
celebrating diversity of the  
UK. These 5 values are:  
**Democracy, Rule of Law,  
Mutual Respect, Tolerance,  
Individual Liberty.**

**Which FBV does the theme  
of 'ROUTINES' link with?**

**Keep to the Left**





**Fundamental British Values** underpin what it is to be a citizen in a modern and diverse Great Britain valuing our community and celebrating diversity of the UK. These 5 values are:  
Democracy, Rule of Law, Individual Liberty, Mutual Respect and Tolerance.

#### 1. Democracy

- 'Rule by the people'
- Making decisions together (voting)
- The right to voice your opinion

#### 2. Rule of Law

- Understand and obey the rules set by the government to develop order



#### 5. Tolerance

- Respecting different faiths and cultures
- Understanding that we don't all share the same beliefs and values and not imposing ours on others

#### 4. Mutual Respect

- To treat people politely and thoughtfully, to show we value them
- Seeing things from someone else's viewpoint



#### 3. Individual Liberty

- The right to believe, act and express oneself freely
- The right to freedom of speech
- The right to vote



 MEMORY	 METACOGNITION	 COLLABORATION
 READING, WRITING, LITERACY & ORACY	 NUMERIC APPLICATION	 PROFESSIONAL AWARENESS



**Walk in no more than 2 wide file**  
**Purposefully & Professionally**



**Walk calmly & quietly**  
**Not causing disruption to ongoing lessons.**



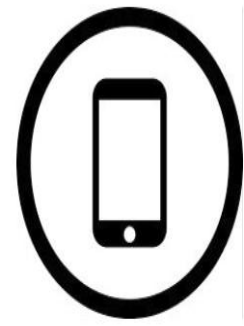
**Walk on the left**  
**Not going over the white line to allow for flow of traffic.**



**Track the direction of travel**  
**Face the way you are walking.**



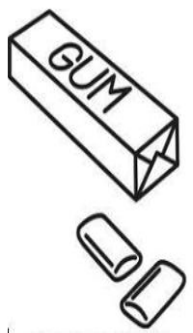
**Walk purposefully/ Do not congregate**  
**Go straight to your destination.**



**No mobile phones**  
**Adhere to the green line rule. If seen/heard - it's taken.**



**No outdoor clothing**  
**No outdoor clothing inside the building. Even if you are heading outside.**



**No chewing Gum**  
**Anytime, anywhere on site (outside & in)**



*Exceptional*  
★★★★★

# Corridor Routines

*We will have a green-line to make this clear for everyone.*

*These will be located outside Student Services & The Canteen Entrance.*



 MEMORY	 METACOGNITION	 COLLABORATION
 READING, WRITING, LITERACY & GRACY	 NUMERIC APPLICATION	 PROFESSIONAL AWARENESS



**Do not talk whilst the staff member is talking**  
Listen respectfully



**Appropriate contact only**  
Do not hold hands or drape arms over others



**Sit professionally**  
No head on desk/table or slouching



**Communicate appropriately**  
As instructed in lesson depending on learning mode



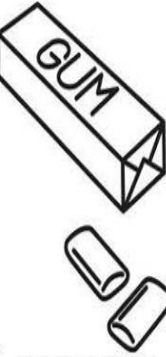
**Follow instructions from ALL staff first time**  
Do not argue with any instruction given



**No mobile phones**  
Adhere to the green line rule. If seen/heard - it's taken.



**Respect the Academy environment**  
Put litter in the bin, do not graffiti, do not damage furniture.



**No chewing Gum**  
Anytime, anywhere on site (outside & in)



*Exceptional*  
★★★★★

# Behaviour Routines

*To support each other, all staff must follow the behaviour routines*



Greet your teacher at the door.  
**Professional Conduct.**



Enter the classroom quietly.  
**Not causing disruption to others.**



Put your equipment on the desk.  
**Be ready to learn immediately.**



Start the activate task.  
**This will be ready for you as you enter the classroom..**



Answer the register.  
**Do not talk while others are answering.**



Pack away when directed to by the teacher.  
**Prompt and sensible.**



Stand behind your chair when you've packed away.  
**Await further instructions.**



Wait in silence to be dismissed.  
**Your teacher will do this promptly if all other routines have been followed.**



Move onto the corridors using the calm corridor routine.  
**Sensible always.**



*Exceptional*  
★★★★★

# Lesson Routines

*Entry and exit to all lessons should follow these routines.*



**EXTRA-CURRICULAR TIMETABLE**

**SUMMER - TERM 1 2025-2026**



# Extra-Curricular Activities: Summer Term 1 25/26



DAY	CLUB	LOCATION	STAFF	P6 Week A	P6 Week B
MONDAY	<ul style="list-style-type: none"> <li>Rounders</li> <li>Cooking Club</li> <li>Writing Club</li> <li>DOFE Week A</li> </ul>	<ul style="list-style-type: none"> <li>Sports hall/fields</li> <li>Cooking Room</li> <li>Library</li> <li>402</li> </ul>	<ul style="list-style-type: none"> <li>SMT/HRA</li> <li>JBA</li> <li>ASQ</li> <li>GEA</li> </ul>	Option A	Option D
TUESDAY	<ul style="list-style-type: none"> <li>Wheelchair sports club</li> <li>Music Club (Invite Only)</li> <li>KS3 Coding Club</li> <li>10W Maths club (invite only)</li> </ul>	<ul style="list-style-type: none"> <li>Sports Hall</li> <li>401</li> <li>608</li> <li>407</li> </ul>	<ul style="list-style-type: none"> <li>SCU</li> <li>AMC</li> <li>OMO</li> <li>MAS</li> </ul>	Science	Science
WEDNESDAY	<ul style="list-style-type: none"> <li>Cricket</li> <li>BSL Club</li> <li>STEM on Track (Invite only)</li> <li>Music Club</li> <li>PRIDE club – Week A lunch time</li> </ul>	<ul style="list-style-type: none"> <li>Sports hall/outside</li> <li>805</li> <li>Lecture Theatre</li> <li>401</li> <li>302</li> </ul>	<ul style="list-style-type: none"> <li>JDAA</li> <li>DCR/ SHE</li> <li>EGA</li> <li>AMC</li> <li>CBR</li> </ul>	Maths	Maths
THURSDAY	<ul style="list-style-type: none"> <li>Athletics</li> <li>Choir</li> <li>Drama Club</li> <li>Sparx Support Club</li> <li>BSL Beginners</li> <li>KS4 Computer Science Club (Invite only)</li> </ul>	<ul style="list-style-type: none"> <li>Sports hall/outside</li> <li>401</li> <li>Lecture Theatre</li> <li>402</li> <li>805</li> <li>608</li> </ul>	<ul style="list-style-type: none"> <li>GEA</li> <li>ECO/CBR</li> <li>LAB/BRO</li> <li>EBu</li> <li>DCR/JSL</li> <li>OMO</li> </ul>	English	English
FRIDAY	<ul style="list-style-type: none"> <li>Student Council KS3 – Week A lunch</li> <li>Student Council KS4 – Week A lunch</li> </ul>	<ul style="list-style-type: none"> <li>302</li> <li>302</li> </ul>	<ul style="list-style-type: none"> <li>CBR</li> <li>CBR</li> </ul>	Option B	Option C



# The Designated Safeguarding Leads @TNA

Miss Hall is the Designated Safeguarding Lead



**Miss A Hall**  
DSL



**Ms H Baxter**  
Deputy DSL



**Ms R Leroy**  
Deputy DSL



**Ms E Carter**  
Deputy DSL



**Ms J Brook**  
Deputy DSL



**Ms G Coldwell**  
Deputy DSL

How can I keep Safe?

[talk@newsomeacademy.co.uk](mailto:talk@newsomeacademy.co.uk)