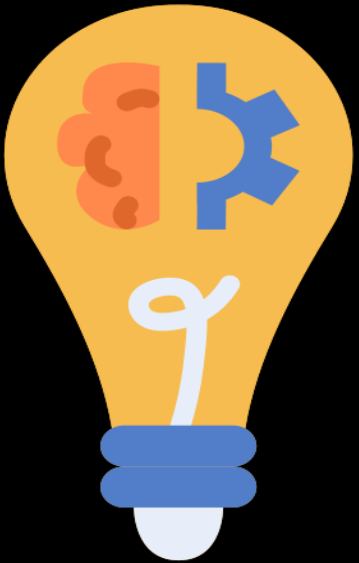




FAMILY NEWS

Week 32B – Monday 18th of May

THEMES OF THE WEEK



Reflect on how well we 'consistently' ensure our routines are embedded to ensure we are successful.

- ✓ Welcome back!
- ✓ World Creativity & Innovation Day
- ✓ London Marathon
- ✓ Local Community & History Month
- ✓ Mental Health Awareness Week
- ✓ World Orienteering Week

HOLIDAY INSET Y6 TRANSITION

2025					2026						
August	September	October	November	December	January	February	March	April	May	June	July
1 Fr	1 Mo ³⁶	1 We	1 Sa	1 Mo ⁴⁹	1 Th ^{New Year's Day}	1 Su	1 Su	1 We	1 Fr	1 Mo ²³	1 We
2 Sa	2 Tu	2 Th	2 Su	2 Tu	2 Fr	2 Mo ⁶	2 Mo ¹⁰	2 Th	2 Sa	2 Tu	2 Th
3 Su	3 We	3 Fr	3 Mo ⁴⁵	3 We	3 Sa	3 Tu	3 Tu	3 Fr ^{Good Friday}	3 Su	3 We	3 Fr
4 Mo ³²	4 Th	4 Sa	4 Tu	4 Th	4 Su	4 We	4 We	4 Sa	4 Mo ^{Early May Bk. Hol.} ¹⁹	4 Th	4 Sa
5 Tu	5 Fr	5 Su	5 We	5 Fr	5 Mo ²	5 Th	5 Th	5 Su	5 Tu	5 Fr	5 Su
6 We	6 Sa	6 Mo ⁴¹	6 Th	6 Sa	6 Tu	6 Fr	6 Fr	6 Mo ^{Easter Monday} ⁵	6 We	6 Sa	6 Mo ²⁸
7 Th	7 Su	7 Tu	7 Fr	7 Su	7 We	7 Sa	7 Sa	7 Tu	7 Th	7 Su	7 Tu
8 Fr	8 Mo ³⁷	8 We	8 Sa	8 Mo ⁵⁰	8 Th	8 Su	8 Su	8 We	8 Fr	8 Mo ²⁴	8 We
9 Sa	9 Tu	9 Th	9 Su	9 Tu	9 Fr	9 Mo ⁷	9 Mo ¹¹	9 Th	9 Sa	9 Tu	9 Th
10 Su	10 We	10 Fr	10 Mo ⁴⁶	10 We	10 Sa	10 Tu	10 Tu	10 Fr	10 Su	10 We	10 Fr
11 Mo ³³	11 Th	11 Sa	11 Tu	11 Th	11 Su	11 We	11 We	11 Sa	11 Mo ²⁰	11 Th	11 Sa
12 Tu	12 Fr	12 Su	12 We	12 Fr	12 Mo ³	12 Th	12 Th	12 Su	12 Tu	12 Fr	12 Su
13 We	13 Sa	13 Mo ⁴²	13 Th	13 Sa	13 Tu	13 Fr	13 Fr	13 Mo ¹ ⁶	13 We	13 Sa	13 Mo ²⁹
14 Th	14 Su	14 Tu	14 Fr	14 Su	14 We	14 Sa	14 Sa	14 Tu	14 Th	14 Su	14 Tu
15 Fr	15 Mo ³⁸	15 We	15 Sa	15 Mo ⁵¹	15 Th	15 Su	15 Su	15 We	15 Fr	15 Mo ²⁵	15 We
16 Sa	16 Tu	16 Th	16 Su	16 Tu	16 Fr	16 Mo ⁸	16 Mo ¹²	16 Th	16 Sa	16 Tu	16 Th
17 Su	17 We	17 Fr	17 Mo ⁴⁷	17 We	17 Sa	17 Tu	17 Tu	17 Fr	17 Su	17 We	17 Fr
18 Mo ³⁴	18 Th	18 Sa	18 Tu	18 Th	18 Su	18 We	18 We	18 Sa	18 Mo	18 Th	18 Sa
19 Tu	19 Fr	19 Su	19 We	19 Fr	19 Mo ⁴	19 Th	19 Th	19 Su	19 Tu	19 We	19 Su
20 We	20 Sa	20 Mo ⁴³	20 Th	20 Sa	20 Tu	20 Fr	20 Fr	20 Mo	20 We	20 Sa	20 Mo ³⁰
21 Th	21 Su	21 Tu	21 Fr	21 Su	21 We	21 Sa	21 Sa	21 Tu	21 Th	21 Su	21 Tu
22 Fr	22 Mo ³⁹	22 We	22 Sa	22 Mo ⁵²	22 Th	22 Su	22 Su	22 We	22 Fr	22 Mo ²⁶	22 We
23 Sa	23 Tu	23 Th	23 Su	23 Tu	23 Fr	23 Mo ⁹	23 Mo ¹³	23 Th	23 Sa	23 Tu	23 Th
24 Su	24 We	24 Fr	24 Mo ⁴⁸	24 We	24 Sa	24 Tu	24 Tu	24 Fr	24 Su	24 We	24 Fr
25 Mo ^{August Bk. Hol.} ³⁵	25 Th	25 Sa	25 Tu	25 Th ^{Christmas Day}	25 Su	25 We	25 We	25 Sa	25 Mo ^{Spring Bk. Hol.} ²²	25 Th	25 Sa
26 Tu	26 Fr	26 Su	26 We	26 Fr ^{Boxing Day}	26 Mo ⁵	26 Th	26 Th	26 Su	26 Tu	26 Fr	26 Su
27 We	27 Sa	27 Mo ⁴⁴	27 Th	27 Sa	27 Tu	27 Fr	27 Fr	27 Mo ¹ ⁸	27 We	27 Sa	27 Mo ³¹
28 Th	28 Su	28 Tu	28 Fr	28 Su	28 We	28 Sa	28 Sa	28 Tu	28 Th	28 Su	28 Tu
29 Fr	29 Mo ⁴⁰	29 We	29 Sa	29 Mo ¹	29 Th		29 Su	29 We	29 Fr	29 Mo ²⁷	29 We
30 Sa	30 Tu	30 Th	30 Su	30 Tu	30 Fr		30 Mo ¹⁴	30 Th	30 Sa	30 Tu	30 Th
31 Su		31 Fr		31 We	31 Sa		31 Tu		31 Su		31 Fr

WE ARE HERE



1 WEEKS

UNTIL MAY HALF-TERM

4 WEEKS

UNTIL Yr 10 GO ON WORK EXPERIENCE

8TH JUNE



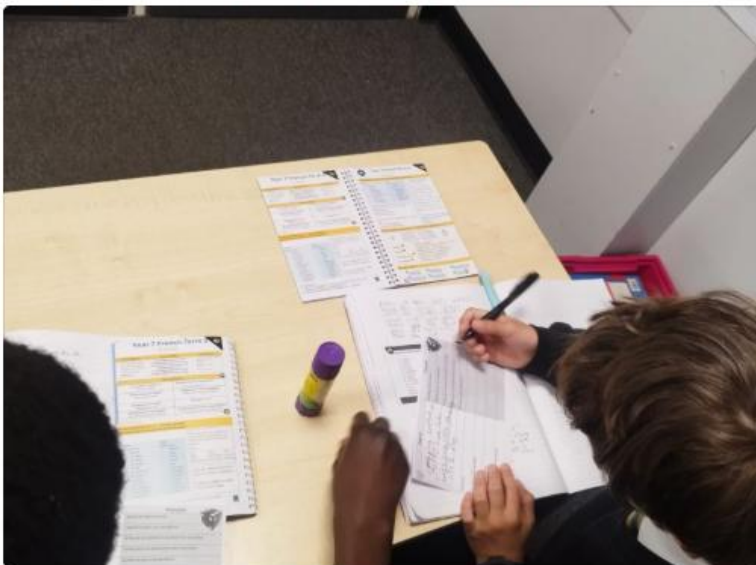
8 SCHOOL WEEKS

UNTIL THE END OF SCHOOL YEAR



Newsome Academy @NewsomeAcademy

Excellent collaboration from year 7 in French this morning. One pen one dice to practise their translation skills. 🇫🇷



SPECIAL moments



Newsome Academy @NewsomeAcademy

Last week Yr10 seminar announced a new winner for the Race to Exceptional and Head Students pass on the baton!



Newsome Academy @NewsomeAcademy

Year 10 Families - Reminder for Monday's Evening.

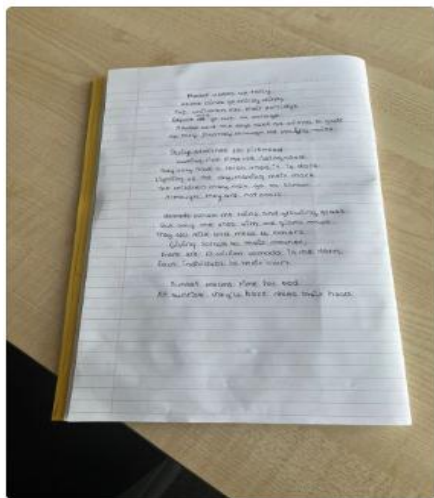
Year 10 GCSE Success Evening
Monday 11th May 5 pm – 6 pm

- Academic Calendar & Key Deadlines - KST
- Understanding Qualifications & Mock Exams - DWA
- Understanding Next Steps for Work Experience - NRA
- Understanding Work Experience Expectations - KST
- Race to Exceptional Initiative - KST
- Head Student & Head Prefect Application Process - KST



Newsome Academy @NewsomeAcademy

Year 8 writing songs or poems in Geography all about life as a Nomad



Newsome Academy @NewsomeAcademy

🍋 Lemon Cheesecake treats from Miss W for the VTC team this week! 🍋





YEAR 10
GCSE EVENTS
THROUGHOUT
THIS YEAR TO
SUPPORT YOUR
CHILD

YEAR 10 GCSE SUCCESS EVENINGS

ENSURING THE BEST FOR YOUR CHILD

Dear Families

Following on from last years' family GCSE sessions there will be several further events throughout this year to prepare your child for success in their GCSE's. This year, there will be a Mock result-issuing session after every set of Mock exams and there will also be general information giving at several points throughout the year.

Event 1 HT2 – Thurs. 13th November - 5pm - 6pm	Intro to GCSE Year <ul style="list-style-type: none"> Preparation for Mocks Race to Exceptional Initiative Work Experience
Event 2 Thursday 5th March 5pm-6pm	February Mock results and Parents' Evening <ul style="list-style-type: none"> Information sharing and understanding results How to support your child further
Event 3 Monday 11th May 5pm - 6pm	Work Experience preparation (w/c 8th June) <ul style="list-style-type: none"> Final prep for Work Experience How to support your child further
Event 4 Thursday 9th July (5pm – 6pm)	June Mock results <ul style="list-style-type: none"> Exam timings and protocol

GCSEs and beyond



readingplus®

Week commencing April 13th - Certificates provided for top 2 students per class for most time spent reading lessons on Reading Plus. (Between 13/04/26 - 01/05/26)

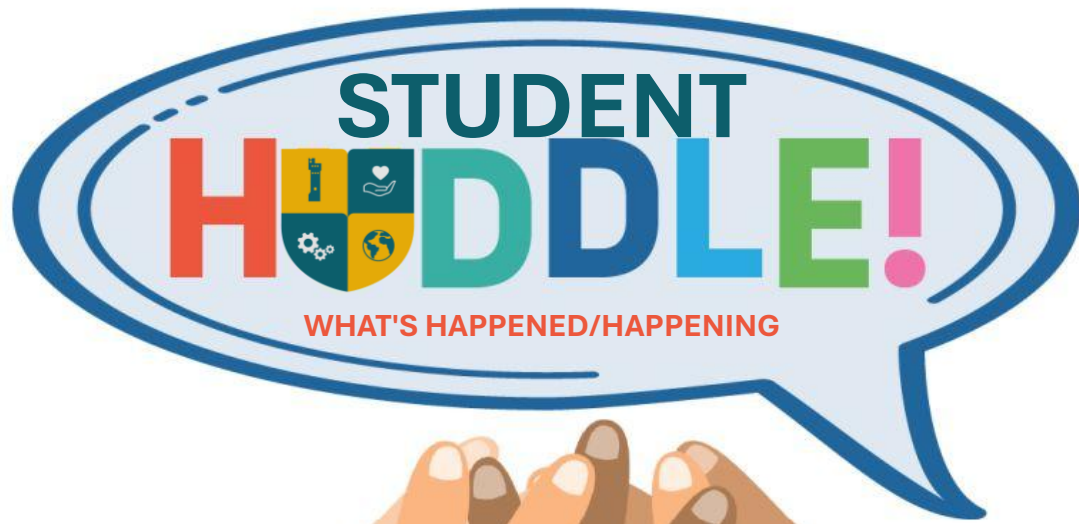
Week commencing April 4th - Certificates provided for top 2 students per class for most reading lessons completed on Reading Plus. (Between 04/05/26 - 15/05/26)

Week commencing April 18th - Certificates provided for top 2 students per class for total highest words read on Reading Plus. (Between 18/04/26 - 21/05/26)

End of term- Certificate provided for top 3 students per year group for highest reading level gained.

WEEKLY UPDATE

WEEK STARTING 16th May



- **Yr 11 Exams and Revision Schedule** – Period 6 remains compulsory throughout the exam period – please check the revision schedule and ensure you attend – you are over half-way now! Thank you for all students continuing to be mindful on corridors during this time and adhering to the daily changes when drop downs occur.
- **Yr 10 Work Experience Information Evening** – Monday 8th to Friday 12th of June
- Yr 10 Head Student & Prefect applications – deadline 22.05.26 - video and letter for the Head Student application and a letter of application for Prefect application. Please send to Mrs Stokes.
- **Yr 10 Mock exams** – begin on Thursday 18th of June
- **Chewing Gum & Uniform Standards** – NO chewing gum in school! ALL shirts and polo shirts should be tucked in. NO leggings, jeans or sports trousers/shorts.
- **HT6** – we welcome you back after the half-term break on Monday 1st of June! Enjoy your break and stay safe!

UPCOMING
EVENTS



EXCEPTIONAL



**THE
SPECIAL 6**
STEPS TO EXCEPTIONAL

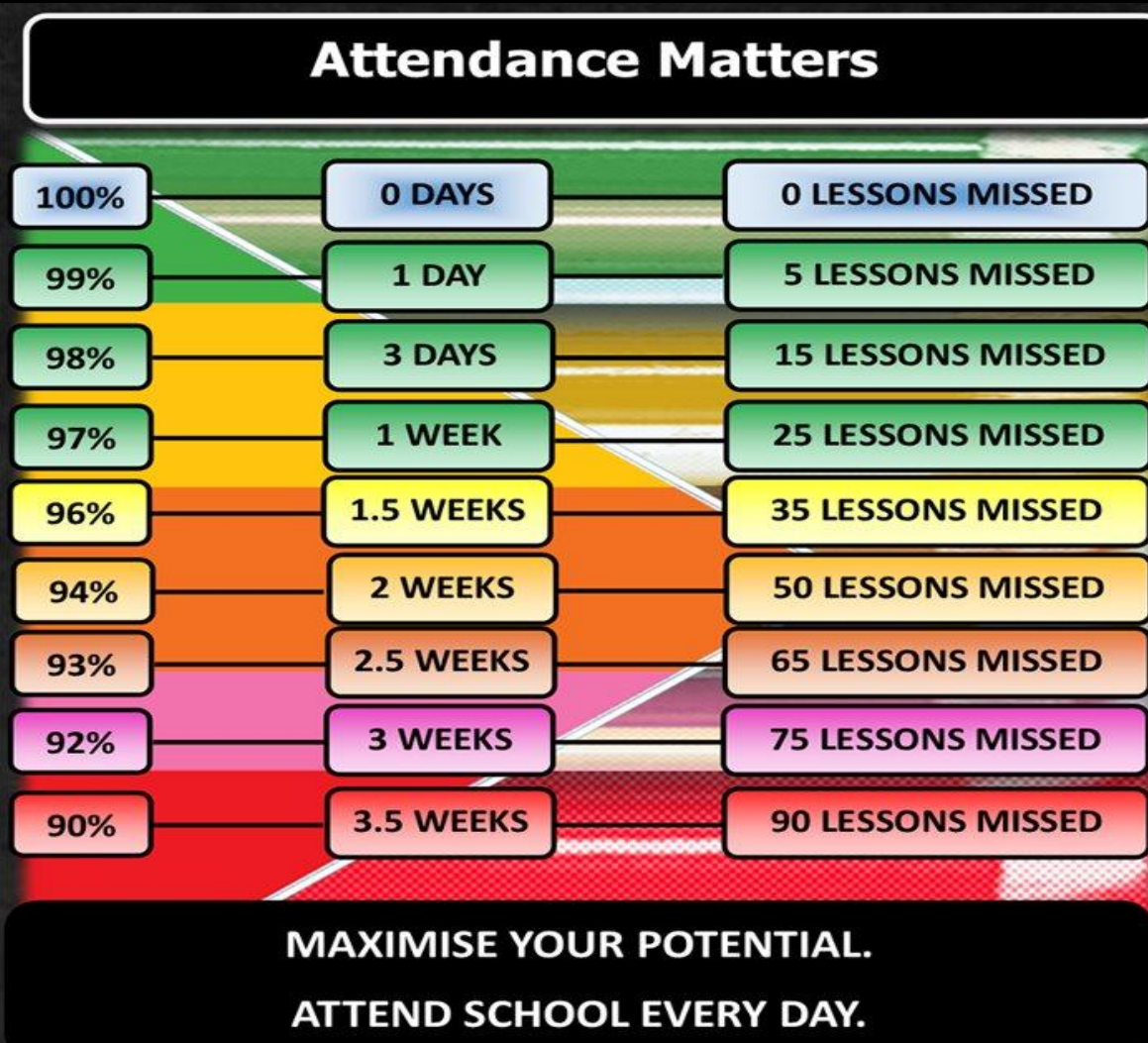
- ✓ **ATTENDANCE**
- ✓ **ATTITUDE TO LEARNING**
- ✓ **CONDUCT**
- ✓ **REWARDS**
- ✓ **EXTRA-CURRICULAR**
- ✓ **HEALTH**



Newsome Academy

General Expectations

✓ Attendance matters



Remember the impact that a low attendance figure has on College applications and life chances!



MIN D S E T

M A S T E R Y





Fundamental British Values underpin what it is to be a citizen in a modern and diverse Great Britain valuing our community and celebrating diversity of the UK. These 5 values are:
Democracy, Rule of Law, Mutual Respect, Tolerance, Individual Liberty.

Which FBV does the theme of 'orienteering' link with?



Newsome
Academy





Fundamental British Values underpin what it is to be a citizen in a modern and diverse Great Britain valuing our community and celebrating diversity of the UK. These 5 values are: Democracy, Rule of Law, Individual Liberty, Mutual Respect and Tolerance.



Newsome Academy

1. Democracy

- 'Rule by the people'
- Making decisions together (voting)
- The right to voice your opinion

2. Rule of Law

- Understand and obey the rules set by the government to develop order



3. Individual Liberty

- The right to believe, act and express oneself freely
- The right to freedom of speech
- The right to vote

4. Mutual Respect

- To treat people politely and thoughtfully, to show we value them
- Seeing things from someone else's viewpoint



5. Tolerance

- Respecting different faiths and cultures
- Understanding that we don't all share the same beliefs and values and not imposing ours on others

World Orienteering Week



- A global celebration of orienteering
- Encourages students to get active outdoors
- Develops map-reading and problem-solving skills
- Takes place every May, this year it is taking place between the 16/05 – 24/05.



What is Orienteering?

- Navigate using a map and compass.
- Find checkpoints (controls).
- Choose your own route.
- Tests fitness and thinking skills.

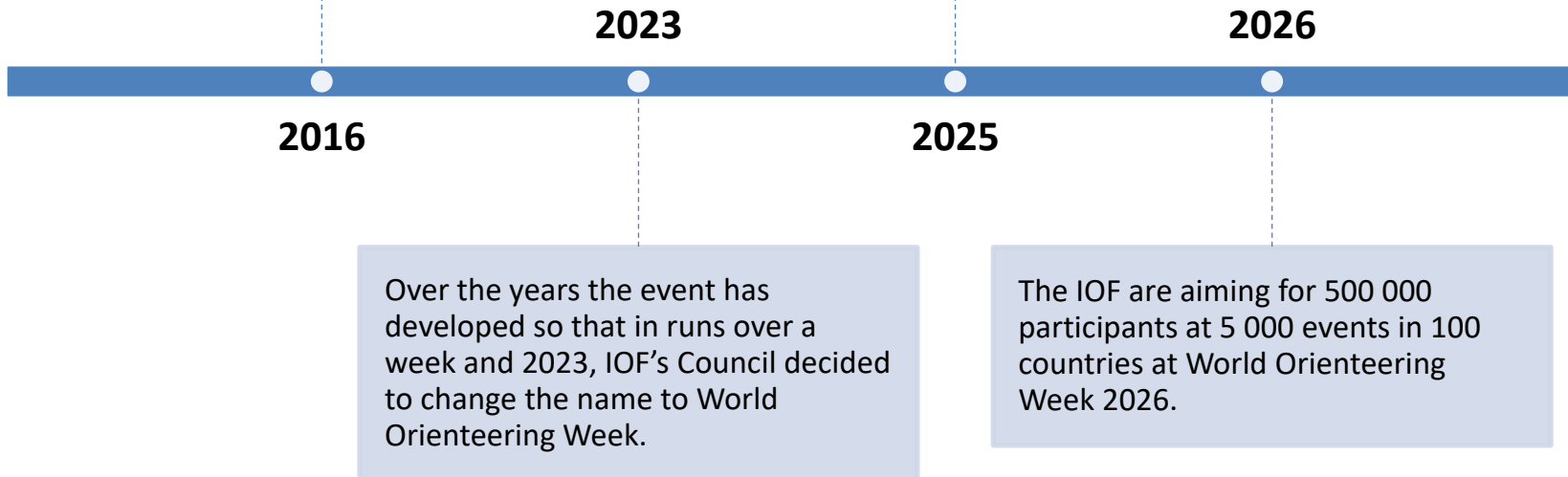


History



World Orienteering Day began in 2016, where more than 250.000 participants took part in an orienteering event on May 11th, introducing young and old people across the world to orienteering.

The 2025 edition of WOW happens from May 17th to May 25th and any orienteering activity held can be registered as a World Orienteering Week event.



What is the vision?

The International Orienteering Federation's goals regarding the organisation of this annual event are as follows:

Increasing the visibility and accessibility of orienteering to young people, increasing the number of participants both in the schools' activities, as well and in the clubs' activities in all countries of National Federations, helping teachers to implement orienteering in a fun and educational way and to get more new countries to take part in orienteering.



How can you get involved?

Head over to the World Orienteering Website where they have a catalogue of activities you can do individually, as a group, or compete against friends!

If you would like to join a club outside of school, the two below are local to Huddersfield.

- East Pennine Orienteering Club (EPOC)
- Airienteers (AIRE)
- South-East Lancashire Orienteering Club (SELOC)

Watch this video, to see what competitive Orienteering looks like.



Final Thought



- Would you try orienteering?
- Could we run this in our school?
- Get involved and give it a go!





EXTRA-CURRICULAR TIMETABLE

SUMMER - TERM 1 2025-2026



Extra-Curricular Activities: Summer Term 1 25/26



DAY	CLUB	LOCATION	STAFF	P6 Week A	P6 Week B
MONDAY	<ul style="list-style-type: none"> Rounders Cooking Club Writing Club DOFE Week A 	<ul style="list-style-type: none"> Sports hall/fields Cooking Room Library 402 	<ul style="list-style-type: none"> SMT/HRA JBA ASQ GEA 	Option A	Option D
TUESDAY	<ul style="list-style-type: none"> Wheelchair sports club Music Club (Invite Only) KS3 Coding Club 10W Maths club (invite only) 	<ul style="list-style-type: none"> Sports Hall 401 608 407 	<ul style="list-style-type: none"> SCU AMC OMO MAS 	Science	Science
WEDNESDAY	<ul style="list-style-type: none"> Cricket BSL Club STEM on Track (Invite only) Music Club PRIDE club – Week A lunch time 	<ul style="list-style-type: none"> Sports hall/outside 805 Lecture Theatre 401 302 	<ul style="list-style-type: none"> JDAA DCR/ SHE EGA AMC CBR 	Maths	Maths
THURSDAY	<ul style="list-style-type: none"> Athletics Choir Drama Club Sparx Support Club BSL Beginners KS4 Computer Science Club (Invite only) 	<ul style="list-style-type: none"> Sports hall/outside 401 Lecture Theatre 402 805 608 	<ul style="list-style-type: none"> GEA ECO/CBR LAB/BRO EBu DCR/JSL OMO 	English	English
FRIDAY	<ul style="list-style-type: none"> Student Council KS3 – Week A lunch Student Council KS4 – Week A lunch 	<ul style="list-style-type: none"> 302 302 	<ul style="list-style-type: none"> CBR CBR 	Option B	Option C



The Designated Safeguarding Leads @TNA

Miss Hall is the Designated Safeguarding Lead



Miss A Hall
DSL



Ms H Baxter
Deputy DSL



Ms R Leroy
Deputy DSL



Ms E Carter
Deputy DSL



Ms J Brook
Deputy DSL



Ms G Coldwell
Deputy DSL

How can I keep Safe?

talk@newsomeacademy.co.uk