



FAMILY NEWS

Week 34B – Monday 8th of June

THEMES OF THE WEEK

Reflect on how well we 'consistently' ensure our routines are embedded to ensure we are successful.

- ✓ PRIDE Month
- ✓ My Money Week
- ✓ Global Wind Day
- ✓ World Rainforest Day
- ✓ World Social Media Day
- ✓ Thank a Teacher Day
- ✓ Keeping Safe!



HOLIDAY INSET Y6 TRANSITION

2025					2026						
August	September	October	November	December	January	February	March	April	May	June	July
1 Fr	1 Mo ³⁶	1 We	1 Sa	1 Mo ⁴⁹	1 Th ^{New Year's Day}	1 Su	1 Su	1 We	1 Fr	1 Mo ²³	1 We
2 Sa	2 Tu	2 Th	2 Su	2 Tu	2 Fr	2 Mo ⁶	2 Mo ¹⁰	2 Th	2 Sa	2 Tu	2 Th
3 Su	3 We	3 Fr	3 Mo ⁴⁵	3 We	3 Sa	3 Tu	3 Tu	3 Fr ^{Good Friday}	3 Su	3 We	3 Fr
4 Mo ³²	4 Th	4 Sa	4 Tu	4 Th	4 Su	4 We	4 We	4 Sa	4 Mo ^{Early May Bk. Hol.} ¹⁹	4 Th	4 Sa
5 Tu	5 Fr	5 Su	5 We	5 Fr	5 Mo ²	5 Th	5 Th	5 Su	5 Tu	5 Fr	5 Su
6 We	6 Sa	6 Mo ⁴¹	6 Th	6 Sa	6 Tu	6 Fr	6 Fr	6 Mo ^{Easter Monday} ⁵	6 We	6 Sa	6 Mo ²⁸
7 Th	7 Su	7 Tu	7 Fr	7 Su	7 We	7 Sa	7 Sa	7 Tu	7 Th	7 Su	7 Tu
8 Fr	8 Mo ³⁷	8 We	8 Sa	8 Mo ⁵⁰	8 Th	8 Su	8 Su	8 We	8 Fr	8 Mo	8 Tu
9 Sa	9 Tu	9 Th	9 Su	9 Tu	9 Fr	9 Mo ⁷	9 Mo ¹¹	9 Th	9 Sa	9 Tu	9 We
10 Su	10 We	10 Fr	10 Mo ⁴⁶	10 We	10 Sa	10 Tu	10 Tu	10 Fr	10 Su	10 We	10 Fr
11 Mo ³³	11 Th	11 Sa	11 Tu	11 Th	11 Su	11 We	11 We	11 Sa	11 Mo ²⁰	11 Th	11 Sa
12 Tu	12 Fr	12 Su	12 We	12 Fr	12 Mo ³	12 Th	12 Th	12 Su	12 Tu	12 Fr	12 Su
13 We	13 Sa	13 Mo ⁴²	13 Th	13 Sa	13 Tu	13 Fr	13 Fr	13 Mo ¹ ⁶	13 We	13 Sa	13 Mo ²⁹
14 Th	14 Su	14 Tu	14 Fr	14 Su	14 We	14 Sa	14 Sa	14 Tu	14 Th	14 Su	14 Tu
15 Fr	15 Mo ³⁸	15 We	15 Sa	15 Mo ⁵¹	15 Th	15 Su	15 Su	15 We	15 Fr	15 Mo ²⁵	15 We
16 Sa	16 Tu	16 Th	16 Su	16 Tu	16 Fr	16 Mo ⁸	16 Mo ¹²	16 Th	16 Sa	16 Tu	16 Th
17 Su	17 We	17 Fr	17 Mo ⁴⁷	17 We	17 Sa	17 Tu	17 Tu	17 Fr	17 Su	17 We	17 Fr
18 Mo ³⁴	18 Th	18 Sa	18 Tu	18 Th	18 Su	18 We	18 We	18 Sa	18 Mo ²¹	18 Th	18 Sa
19 Tu	19 Fr	19 Su	19 We	19 Fr	19 Mo ⁴	19 Th	19 Th	19 Su	19 Tu	19 Fr	19 Su
20 We	20 Sa	20 Mo ⁴³	20 Th	20 Sa	20 Tu	20 Fr	20 Fr	20 Mo ¹ ⁷	20 We	20 Sa	20 Mo ³⁰
21 Th	21 Su	21 Tu	21 Fr	21 Su	21 We	21 Sa	21 Sa	21 Tu	21 Th	21 Su	21 Tu
22 Fr	22 Mo ³⁹	22 We	22 Sa	22 Mo ⁵²	22 Th	22 Su	22 Su	22 We	22 Fr	22 Mo ²⁶	22 We
23 Sa	23 Tu	23 Th	23 Su	23 Tu	23 Fr	23 Mo ⁹	23 Mo ¹³	23 Th	23 Sa	23 Tu	23 Th
24 Su	24 We	24 Fr	24 Mo ⁴⁸	24 We	24 Sa	24 Tu	24 Tu	24 Fr	24 Su	24 We	24 Fr
25 Mo ^{August Bk. Hol.} ³⁵	25 Th	25 Sa	25 Tu	25 Th ^{Christmas Day}	25 Su	25 We	25 We	25 Sa	25 Mo ^{Spring Bk. Hol.} ²²	25 Th	25 Sa
26 Tu	26 Fr	26 Su	26 We	26 Fr ^{Boxing Day}	26 Mo ⁵	26 Th	26 Th	26 Su	26 Tu	26 Fr	26 Su
27 We	27 Sa	27 Mo ⁴⁴	27 Th	27 Sa	27 Tu	27 Fr	27 Fr	27 Mo ¹ ⁸	27 We	27 Sa	27 Mo ³¹
28 Th	28 Su	28 Tu	28 Fr	28 Su	28 We	28 Sa	28 Sa	28 Tu	28 Th	28 Su	28 Tu
29 Fr	29 Mo ⁴⁰	29 We	29 Sa	29 Mo ¹	29 Th			29 Su	29 We	29 Fr	29 Mo ²⁷
30 Sa	30 Tu	30 Th	30 Su	30 Tu	30 Fr			30 Mo ¹⁴	30 Th	30 Sa	30 Tu
31 Su		31 Fr		31 We	31 Sa			31 Tu		31 Su	31 Fr



0 WEEK

UNTIL YR 10 START
WORK EXPERIENCE
8TH MAY

2 WEEKS

UNTIL YR 11 FINISH
THEIR GCSE EXAMS
16TH JUNE



2 WEEKS
UNTIL END OF YEAR
EXAMS BEGIN
18TH JUNE

6 SCHOOL WEEKS

UNTIL THE END OF
SCHOOL YEAR



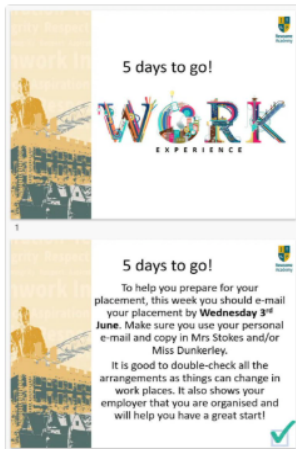
Newsome Academy @NewsomeAcademy

Our Y10 athletes had a great time at the Kirklees Athletics today. Some fantastic times and distances achieved 🏆🏃🏃🏃



Newsome Academy @NewsomeAcademy

Our Year 10 start their work experience next week. Here are a last few tips.....



SPECIAL moments



Newsome Academy @NewsomeAcademy

And they're off!! What a day for your DofE practice walk ☀️☀️👟👟



Newsome Academy @NewsomeAcademy

Y7 have made some keyrings... honing their scroll saw skills in DT.



Newsome Academy @NewsomeAcademy

Some lovely new additions to our beautiful Academy 🥰

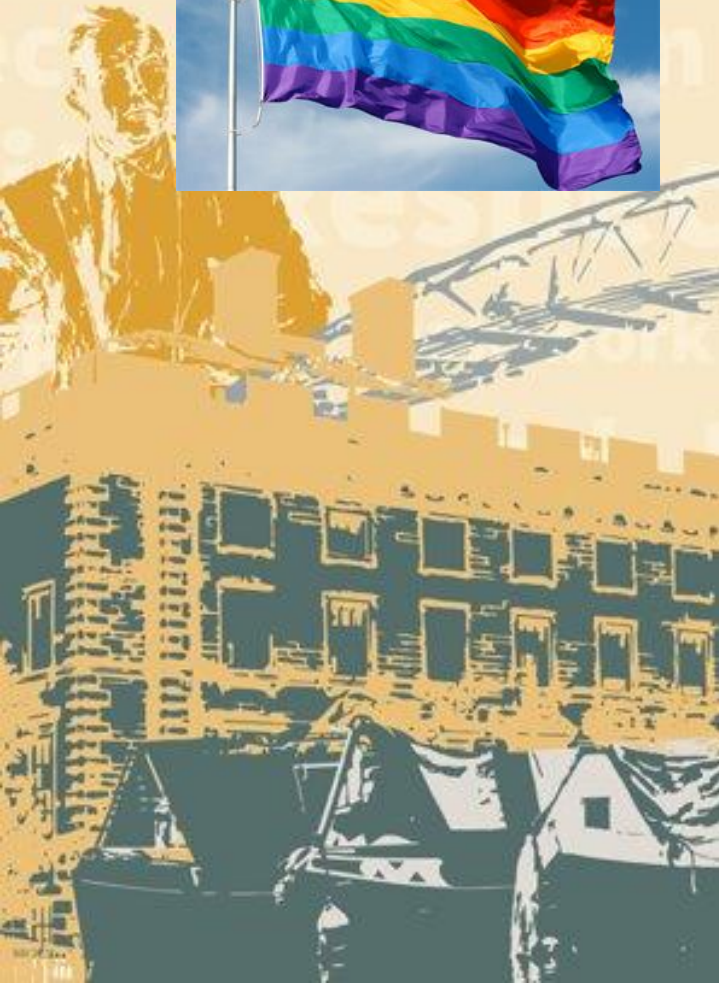




PRIDE MONTH



Newsome
Academy





**YEAR 11
RESULTS
DAY
THURSDAY
20TH JUNE**

YEAR 11 GCSE SUCCESS EVENINGS

ENSURING THE BEST FOR YOUR CHILD

Dear Families

This year, results day will be on Thursday 20th of August. You will receive notification as to when your child can pick up their results and celebrate their successes with their peers and staff. Students will also have the opportunity to discuss next steps with our Careers Advisor.

We hope you have found all the communications throughout the year, including the information and mock evenings informative and useful. We wish all the students the best of luck and thank you, our families, for all your continued support!



Newsome Academy · 03/09/2025



Wishing our superstar Y12's a fab start at College. We are already working in the background ensuring you are OK on your onward journey! 🥰





YEAR 10
GCSE EVENTS
THROUGHOUT
THIS YEAR TO
SUPPORT YOUR
CHILD

YEAR 10 GCSE SUCCESS EVENINGS

ENSURING THE BEST FOR YOUR CHILD

Dear Families

Following on from last years' family GCSE sessions there will be several further events throughout this year to prepare your child for success in their GCSE's. This year, there will be a Mock result-issuing session after every set of Mock exams and there will also be general information giving at several points throughout the year.

<p>Event 1 HT2 – Thurs. 13th November - 5pm - 6pm</p>	<p>Intro to GCSE Year</p> <ul style="list-style-type: none"> • Preparation for Mocks • Race to Exceptional Initiative • Work Experience
<p>Event 2 Thursday 5th March 5pm-6pm</p>	<p>February Mock results and Parents' Evening</p> <ul style="list-style-type: none"> • Information sharing and understanding results • How to support your child further
<p>Event 3 Monday 11th May 5pm - 6pm</p>	<p>Work Experience preparation (w/c 8th June)</p> <ul style="list-style-type: none"> • Final prep for Work Experience • How to support your child further
<p>Event 4 Thursday 9th July (5pm – 6pm)</p>	<p>June Mock results</p> <ul style="list-style-type: none"> • Exam timings and protocol

GCSEs and beyond



readingplus®

Week commencing June 1st - Certificates provided for top 2 students per class for most time spent reading lessons on Reading Plus. (Between 01/06/26 - 12/06/26)

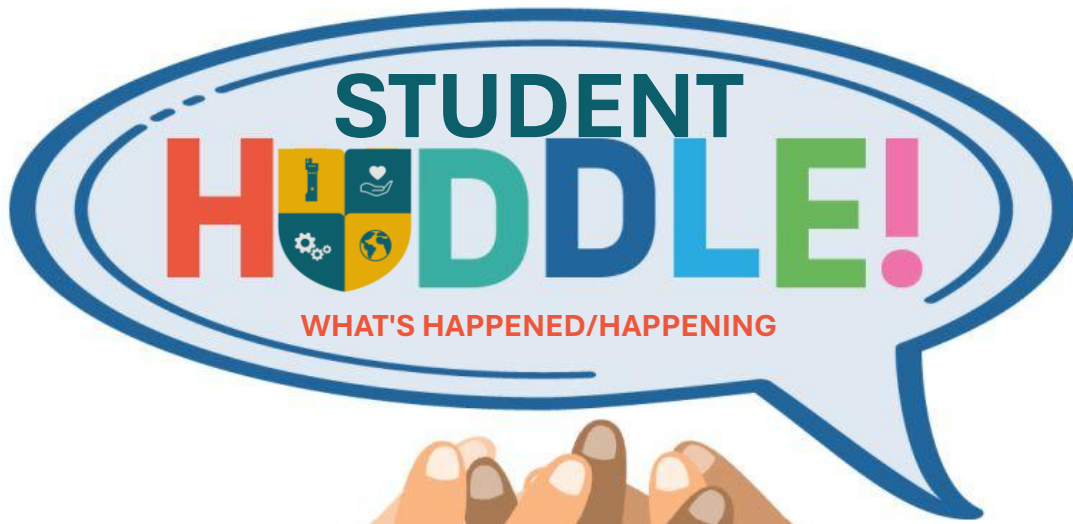
Week commencing June 15th - Certificates provided for top 2 students per class for most reading lessons completed on Reading Plus. (Between 15/06/26 - 26/06/26)

Week commencing June 29th - Certificates provided for top 2 students per class for total highest words read on Reading Plus. (Between 29/06/26 - 10/07/26)

End of term- Certificate provided for top 3 students per year group for highest reading level gained.

WEEKLY UPDATE

WEEK STARTING 8th June



- ✓ **Yr 10 Work Experience Week** – TODAY - Monday 8th till Friday 12th of June!
- ✓ **Yr 10 Head Student & Prefect applications** - applications for the roles are now closed for Year 10 and the staff vote will be concluded. Watch this space for who gets the role! Once the Head Students are nominated, they will be visiting the KS3 seminars to launch the applications for Prefects 2026-27!
- ✓ End of year exams for Yr10 will begin on Thursday 18th of June and end of year assessments for all year groups throughout this half-term – good luck everyone!
- ✓ **Careers Fair 2026** - taking place on Monday 6th of July between 12:30-4pm. More details to follow closer to the date and the Sports Hall will be open to families to join between 3-4pm.

UPCOMING
EVENTS



EXCEPTIONAL



**THE
SPECIAL 6**
STEPS TO EXCEPTIONAL

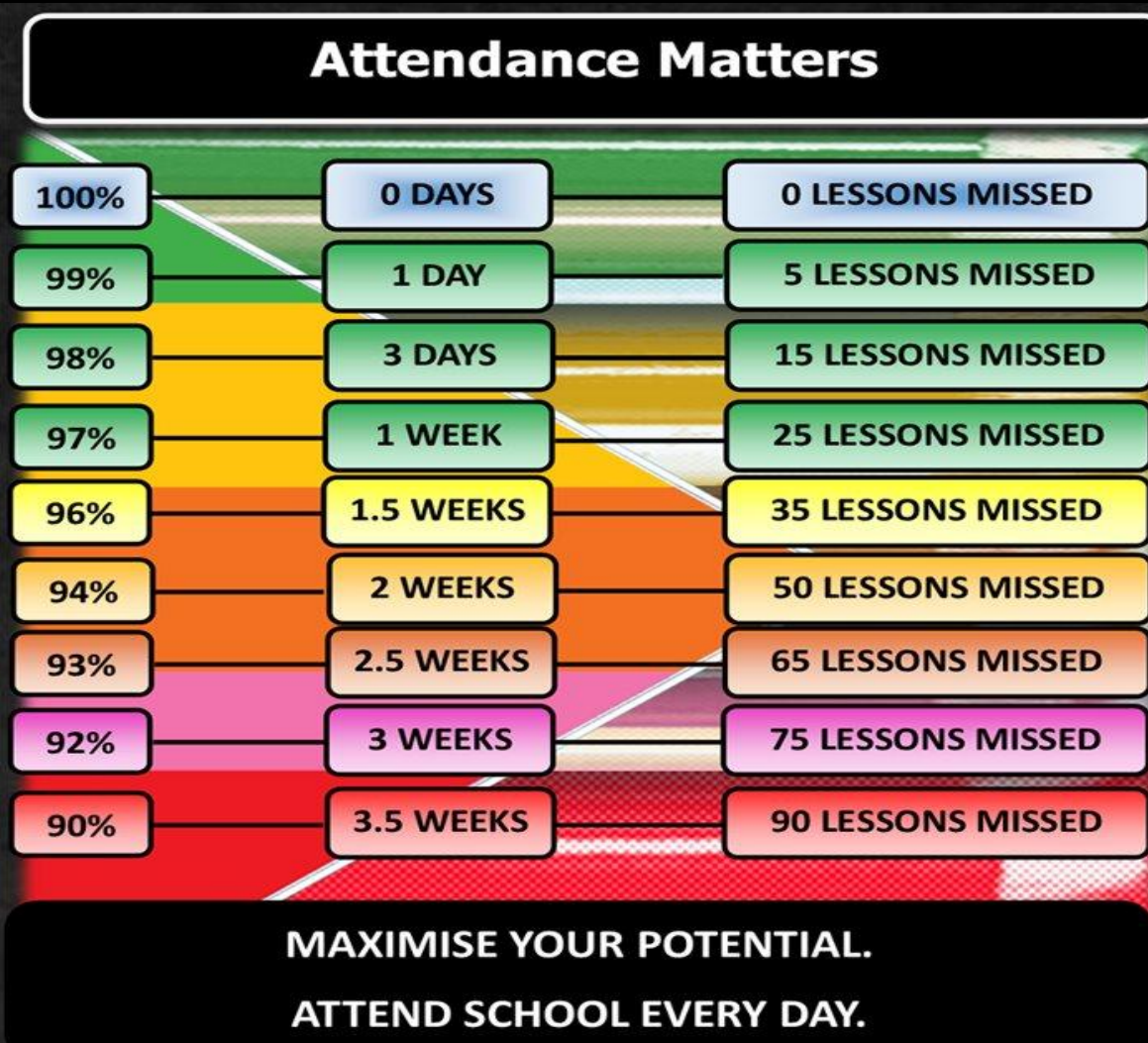
- ✓ **ATTENDANCE**
- ✓ **ATTITUDE TO LEARNING**
- ✓ **CONDUCT**
- ✓ **REWARDS**
- ✓ **EXTRA-CURRICULAR**
- ✓ **HEALTH**



Newsome Academy

General Expectations

✓ Attendance matters



Remember the impact that a low attendance figure has on College applications and life chances!



MIN D S E T

M A S T E R Y





Fundamental British Values underpin what it is to be a citizen in a modern and diverse Great Britain valuing our community and celebrating diversity of the UK. These 5 values are:
Democracy, Rule of Law, Mutual Respect, Tolerance, Individual Liberty.

Which FBV does the theme of 'MY MONEY Week' link with?



Newsome
Academy





Fundamental British Values underpin what it is to be a citizen in a modern and diverse Great Britain valuing our community and celebrating diversity of the UK. These 5 values are: Democracy, Rule of Law, Individual Liberty, Mutual Respect and Tolerance.



Newsome Academy

1. Democracy

- 'Rule by the people'
- Making decisions together (voting)
- The right to voice your opinion



5. Tolerance

- Respecting different faiths and cultures
- Understanding that we don't all share the same beliefs and values and not imposing ours on others



2. Rule of Law

- Understand and obey the rules set by the government to develop order

4. Mutual Respect

- To treat people politely and thoughtfully, to show we value them
- Seeing things from someone else's viewpoint

3. Individual Liberty

- The right to believe, act and express oneself freely
- The right to freedom of speech
- The right to vote

My Money Week: Follow the Money



Where does this £10 go?

Some might go to the person serving you as part of their wage/salary.

Some might help to pay the business' rent.

Some might go to tax.

Some might be used to purchase further stock or go to suppliers.

Some might go to a head office, shareholders or an online company somewhere – leaving the local community.

Money just doesn't disappear when you spend it. It moves.



Spend local or spend online?



The big idea: money is everywhere!

Money affects:

Where people work?

Where people shop?

What services exist?

What gets built?

What gets repaired?

What disappears?

What opportunities young people have?



The community map – what would you miss?

No parks!
No corner shops!
No takeaways!
No leisure centre!
No football pitches!
No buses!
No library!
No school!



Who decides where the money goes?

Families decide how to spend household income.

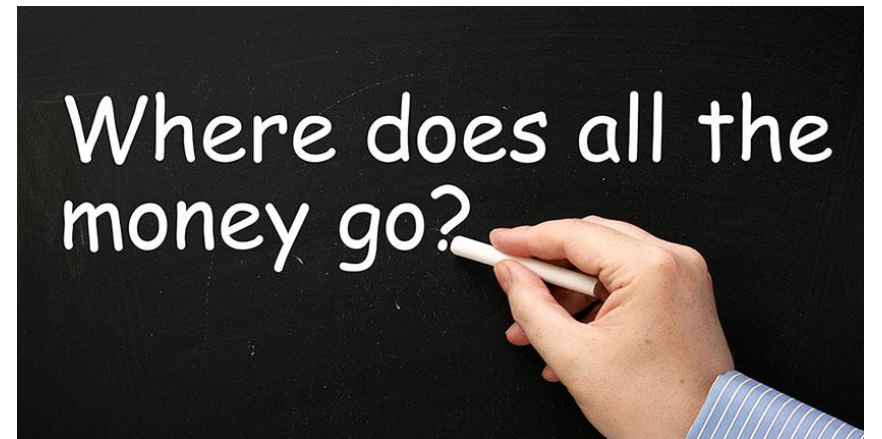
Businesses decide what to sell, where to open, who to employ.

Councils decide how to spend local money.

Government decides national priorities.

Customers influence what survives by where they spend.

Young people influence communities through choices, ideas and future careers.



What could be better in our community

Every community has things that work well, but every community also has problems, gaps or things that could be improved.

For example:

A place young people can go

Safer spaces

Cheaper activities

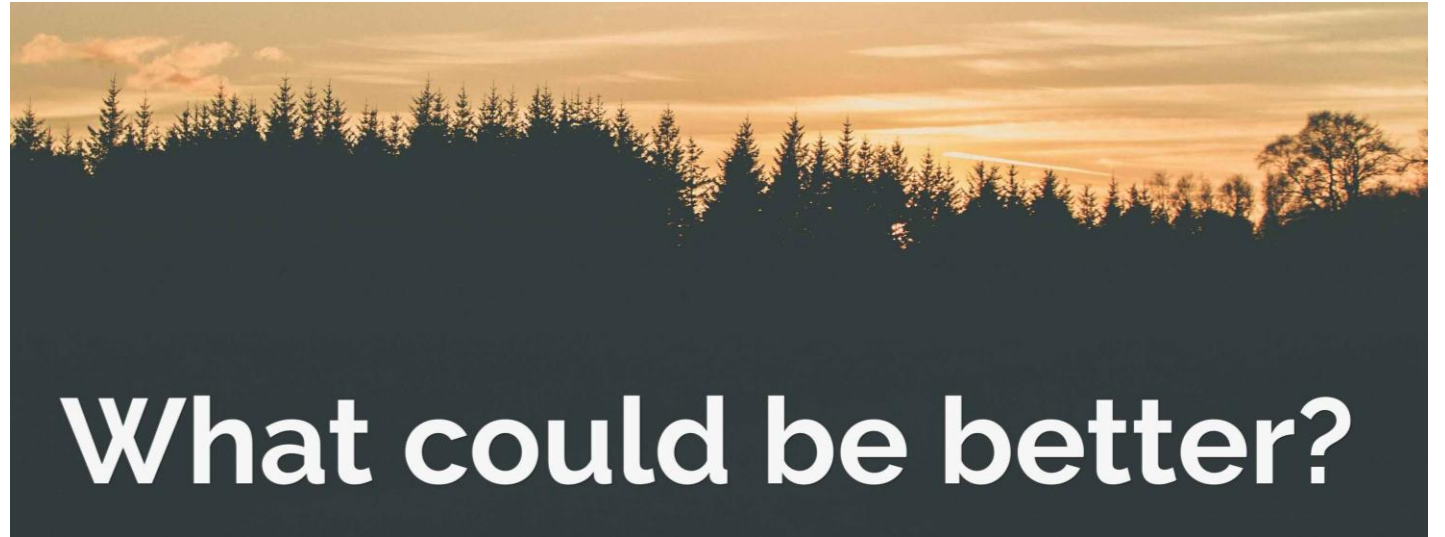
Better transport

More local jobs

Less waste

Support for people who need help

More things to do after school



Enterprise means spotting one of those problems and thinking of a solution.

Why Maths matters



Percentages help us understand discounts, tax, interest and price rises.

Graphs show changes in prices, income, spending and employment.

Averages can describe wages, house prices or costs — but can also hide inequality.

Estimation helps us judge whether something is reasonable.

Probability and risk help with insurance, loans, investments and decision-making.

Is it really half price?

WAS £40
NOW £20
50% OFF!

Was it really sold at £40?

Was £40 the normal price?

Was it only £40 for a short time?

Is the saving clear and honest?

A discount is only useful if the original price was real!



So what is My Money Week really about?

Not just:

Saving money

Spending money

Bank accounts

Budgets

But also:

Choices

Consequences

Communities

Opportunities

Fairness

Independence



Very soon, these decisions will be yours

You may need to decide:

Can I afford this?

Is this offer really a good deal?

How much will I actually be paid?

What will travel, food or phone costs really add up to?

Should I save, spend or wait?

What career or course choices might affect my future income?



Your challenge: notice money differently

Over the next few days, try to notice:

Where people spend money

Where people earn money

What things cost

What is advertised as a “deal”

What your community has

What your community is missing

Who benefits from financial decisions



Follow the money

Money moves.

Money shapes choices.

Money affects communities.

Maths helps us understand it.

Your decisions matter.





EXTRA-CURRICULAR TIMETABLE

SUMMER - TERM 2 2025-2026



Extra-Curricular Activities: Summer Term 2 25/26



DAY	CLUB	LOCATION	STAFF	P6 Week A	P6 Week B
MONDAY	<ul style="list-style-type: none"> • Rounders • Cooking Club • Writing Club • DOFE Week A • Algebra Level 3 Club (invite only) • Chess 	<ul style="list-style-type: none"> • Sports hall/fields • Cooking Room • Library • 402 • 407 • Library 	<ul style="list-style-type: none"> • SMT/HRA • JBA • ASQ • GEA • MAS • NLA 	Option A	Option D
TUESDAY	<ul style="list-style-type: none"> • Wheelchair sports club • Music Club (Invite Only) • KS3 Coding Club • Week B - student council- 30 mins • Week A- Pride - 30mins 	<ul style="list-style-type: none"> • Sports Hall • 401 • 608 • 302 • 302 	<ul style="list-style-type: none"> • SCU • AMC • OMO • CBR • CBR 	Science	Science
WEDNESDAY	<ul style="list-style-type: none"> • Cricket • BSL Club • STEM on Track (Invite only) • Music Club (Open to all) • Week B- debate club – 30mins • Week A&B- Culture Club- 45 min 	<ul style="list-style-type: none"> • Sports hall/outside • 805 • Lecture Theatre • 401 • 302 • 302 	<ul style="list-style-type: none"> • JDAA • DCR/ SHE • EGA • AMC • CBR • CBR 	Maths	Maths
THURSDAY	<ul style="list-style-type: none"> • Athletics • Choir • Drama Club • Sparx Support Club • BSL Beginners • KS4 Computer Science Club (Invite only) • H&S YR 10 	<ul style="list-style-type: none"> • Sports hall/outside • 401 • Lecture Theatre • 402 • 805 • 608 • 606 	<ul style="list-style-type: none"> • GEA • ECO/CBR • LAB/BRO • EBU • DCR/JSL • OMO • SMI 	English	English
FRIDAY				Option B	Option C



The Designated Safeguarding Leads @TNA

Miss Hall is the Designated Safeguarding Lead



Miss A Hall
DSL



Ms H Baxter
Deputy DSL



Ms R Leroy
Deputy DSL



Ms E Carter
Deputy DSL



Ms J Brook
Deputy DSL



Ms G Coldwell
Deputy DSL

How can I keep Safe?

talk@newsomeacademy.co.uk