



# FAMILY NEWS

Week 35A – Monday 15th of June

## THEMES OF THE WEEK

*Reflect on how well we 'consistently' ensure our routines are embedded to ensure we are successful.*

- ✓ PRIDE Month
- ✓ My Money Week
- ✓ Global Wind Day
- ✓ World Rainforest Day
- ✓ World Social Media Day
- ✓ Thank a Teacher Day
- ✓ Keeping Safe!



# HOLIDAY INSET Y6 TRANSITION

2025					2026						
August	September	October	November	December	January	February	March	April	May	June	July
1 Fr	1 Mo <sup>36</sup>	1 We	1 Sa	1 Mo <sup>49</sup>	1 Th <sup>New Year's Day</sup>	1 Su	1 Su	1 We	1 Fr	1 Mo <sup>23</sup>	1 We
2 Sa	2 Tu	2 Th	2 Su	2 Tu	2 Fr	2 Mo <sup>6</sup>	2 Mo <sup>10</sup>	2 Th	2 Sa	2 Tu	2 Th
3 Su	3 We	3 Fr	3 Mo <sup>45</sup>	3 We	3 Sa	3 Tu	3 Tu	3 Fr <sup>Good Friday</sup>	3 Su	3 We	3 Fr
4 Mo <sup>32</sup>	4 Th	4 Sa	4 Tu	4 Th	4 Su	4 We	4 We	4 Sa	4 Mo <sup>Early May Bk. Hol.</sup> <sup>19</sup>	4 Th	4 Sa
5 Tu	5 Fr	5 Su	5 We	5 Fr	5 Mo <sup>2</sup>	5 Th	5 Th	5 Su	5 Tu	5 Fr	5 Su
6 We	6 Sa	6 Mo <sup>41</sup>	6 Th	6 Sa	6 Tu	6 Fr	6 Fr	6 Mo <sup>Easter Monday</sup> <sup>5</sup>	6 We	6 Sa	6 Mo <sup>28</sup>
7 Th	7 Su	7 Tu	7 Fr	7 Su	7 We	7 Sa	7 Sa	7 Tu	7 Th	7 Su	7 Tu
8 Fr	8 Mo <sup>37</sup>	8 We	8 Sa	8 Mo <sup>50</sup>	8 Th	8 Su	8 Su	8 We	8 Fr	8 Mo <sup>24</sup>	8 We
9 Sa	9 Tu	9 Th	9 Su	9 Tu	9 Fr	9 Mo <sup>7</sup>	9 Mo <sup>11</sup>	9 Th	9 Sa	9 Tu	9 Th
10 Su	10 We	10 Fr	10 Mo <sup>46</sup>	10 We	10 Sa	10 Tu	10 Tu	10 Fr	10 Su	10 We	10 Fr
11 Mo <sup>33</sup>	11 Th	11 Sa	11 Tu	11 Th	11 Su	11 We	11 We	11 Sa	11 Mo <sup>20</sup>	11 Th	11 Sa
12 Tu	12 Fr	12 Su	12 We	12 Fr	12 Mo <sup>3</sup>	12 Th	12 Th	12 Su	12 Tu	12 Fr	12 Su
13 We	13 Sa	13 Mo <sup>42</sup>	13 Th	13 Sa	13 Tu	13 Fr	13 Fr	13 Mo <sup>6</sup>	13 We	13 Sa	13 Mo <sup>29</sup>
14 Th	14 Su	14 Tu	14 Fr	14 Su	14 We	14 Sa	14 Sa	14 Tu	14 Th	14 Su	14 Tu
15 Fr	15 Mo <sup>38</sup>	15 We	15 Sa	15 Mo <sup>51</sup>	15 Th	15 Su	15 Su	15 We	15 Fr	15 Mo	15 Fr
16 Sa	16 Tu	16 Th	16 Su	16 Tu	16 Fr	16 Mo <sup>8</sup>	16 Mo <sup>12</sup>	16 Th	16 Sa	16 Tu	16 Fr
17 Su	17 We	17 Fr	17 Mo <sup>47</sup>	17 We	17 Sa	17 Tu	17 Tu	17 Fr	17 Su	17 We	17 Fr
18 Mo <sup>34</sup>	18 Th	18 Sa	18 Tu	18 Th	18 Su	18 We	18 We	18 Sa	18 Mo <sup>2</sup>	18 Th	18 Sa
19 Tu	19 Fr	19 Su	19 We	19 Fr	19 Mo <sup>4</sup>	19 Th	19 Th	19 Su	19 Tu	19 Fr	19 Su
20 We	20 Sa	20 Mo <sup>43</sup>	20 Th	20 Sa	20 Tu	20 Fr	20 Fr	20 Mo <sup>7</sup>	20 We	20 Sa	20 Mo <sup>30</sup>
21 Th	21 Su	21 Tu	21 Fr	21 Su	21 We	21 Sa	21 Sa	21 Tu	21 Th	21 Su	21 Tu
22 Fr	22 Mo <sup>39</sup>	22 We	22 Sa	22 Mo <sup>52</sup>	22 Th	22 Su	22 Su	22 We	22 Fr	22 Mo <sup>26</sup>	22 We
23 Sa	23 Tu	23 Th	23 Su	23 Tu	23 Fr	23 Mo <sup>9</sup>	23 Mo <sup>13</sup>	23 Th	23 Sa	23 Tu	23 Th
24 Su	24 We	24 Fr	24 Mo <sup>48</sup>	24 We	24 Sa	24 Tu	24 Tu	24 Fr	24 Su	24 We	24 Fr
25 Mo <sup>August Bk. Hol.</sup> <sup>35</sup>	25 Th	25 Sa	25 Tu	25 Th <sup>Christmas Day</sup>	25 Su	25 We	25 We	25 Sa	25 Mo <sup>Spring Bk. Hol.</sup> <sup>22</sup>	25 Th	25 Sa
26 Tu	26 Fr	26 Su	26 We	26 Fr <sup>Boxing Day</sup>	26 Mo <sup>5</sup>	26 Th	26 Th	26 Su	26 Tu	26 Fr	26 Su
27 We	27 Sa	27 Mo <sup>44</sup>	27 Th	27 Sa	27 Tu	27 Fr	27 Fr	27 Mo <sup>8</sup>	27 We	27 Sa	27 Mo <sup>31</sup>
28 Th	28 Su	28 Tu	28 Fr	28 Su	28 We	28 Sa	28 Sa	28 Tu	28 Th	28 Su	28 Tu
29 Fr	29 Mo <sup>40</sup>	29 We	29 Sa	29 Mo <sup>1</sup>	29 Th		29 Su	29 We	29 Fr	29 Mo <sup>27</sup>	29 We
30 Sa	30 Tu	30 Th	30 Su	30 Tu	30 Fr		30 Mo <sup>14</sup>	30 Th	30 Sa	30 Tu	30 Th
31 Su		31 Fr		31 We	31 Sa		31 Tu		31 Su		31 Fr



**THIS WEEK**  
END OF YEAR EXAMS  
BEGIN  
18TH JUNE

**2 DAYS**  
UNTIL YR 11 FINISH  
THEIR GCSE EXAMS  
16TH JUNE

**5 SCHOOL WEEKS**  
UNTIL THE END OF  
SCHOOL YEAR



We're proud to celebrate Sotonye and Nethi, who have each been awarded a Reading List Foundation Scholarship 🎓

Nominated by their Personal Tutors, both students were recognised for their academic commitment, contributions to College life, and outstanding resilience throughout their #ALEvel studies.

Each will receive a £275 Blackwell's voucher to support their university reading materials. Pictured is Sotonye, who plans to use her voucher to invest in essential resources as she progresses to the next stage of her education.

Congratulations to both students and thank you to staff for their thoughtful nominations.



Alumni smashing it again!!!

# SPECIAL moments




**Newsome Academy @Newso...** · 19h   
Our Year 10s have been completing their work experience this week - well done everyone 🙌🏻



**Newsome Academy @Newsom...** · 4d   
A great start to the day making fresh Pasta! 🍝👩🍳👨🍳



**Newsome Academy @Newsome...** · 1d   
They made it! Miss Cole's choir plus a few special guests are ready to see Legally Blonde in Leeds tonight 🙌🏻🙌🏻🙌🏻



**Newsome Academy · 04/06/2026**   
Some lovely new additions to our beautiful Academy 🥰





## **Many Voices One Heart**

**- celebrating courage and creativity with our refugee communities**

**27<sup>th</sup> June 3 til 6 pm**

**The Courtyard, Lawrence Batley Theatre**

**An afternoon of music and dance, food and friendship - showcasing the talents, stories and journeys of our refugee communities. In partnership with 6 million+, Kirklees Libraries, Kirklees College and many others**



**YEAR 11  
RESULTS  
DAY  
THURSDAY  
20TH JUNE**

# YEAR 11 GCSE SUCCESS EVENINGS

## ENSURING THE BEST FOR YOUR CHILD

Dear Families

This year, results day will be on Thursday 20th of August. You will receive notification as to when your child can pick up their results and celebrate their successes with their peers and staff. Students will also have the opportunity to discuss next steps with our Careers Advisor.

We hope you have found all the communications throughout the year, including the information and mock evenings informative and useful. We wish all the students the best of luck and thank you, our families, for all your continued support!



Newsome Academy · 03/09/2025



Wishing our superstar Y12's a fab start at College. We are already working in the background ensuring you are OK on your onward journey! 🥰





**YEAR 10**  
**GCSE EVENTS**  
**THROUGHOUT**  
**THIS YEAR TO**  
**SUPPORT YOUR**  
**CHILD**

# YEAR 10 GCSE SUCCESS EVENINGS

## ENSURING THE BEST FOR YOUR CHILD

### Dear Families

Following on from last years' family GCSE sessions there will be several further events throughout this year to prepare your child for success in their GCSE's. This year, there will be a Mock result-issuing session after every set of Mock exams and there will also be general information giving at several points throughout the year.

<p><b>Event 1</b>  <b>HT2 – Thurs. 13th November - 5pm - 6pm</b></p>	<p><b>Intro to GCSE Year</b></p> <ul style="list-style-type: none"> <li>• Preparation for Mocks</li> <li>• Race to Exceptional Initiative</li> <li>• Work Experience</li> </ul>
<p><b>Event 2</b>  <b>Thursday 5th March 5pm-6pm</b></p>	<p><b>February Mock results and Parents' Evening</b></p> <ul style="list-style-type: none"> <li>• Information sharing and understanding results</li> <li>• How to support your child further</li> </ul>
<p><b>Event 3</b>  <b>Monday 11th May 5pm - 6pm</b></p>	<p><b>Work Experience preparation ( w/c 8th June)</b></p> <ul style="list-style-type: none"> <li>• Final prep for Work Experience</li> <li>• How to support your child further</li> </ul>
<p><b>Event 4</b>  <b>Thursday 16th July (5pm – 6pm)</b></p>	<p><b>June Mock results</b></p> <ul style="list-style-type: none"> <li>• Exam timings and protocol</li> </ul>

# GCSEs and beyond



readingplus®

**Week commencing June 1st** - Certificates provided for top 2 students per class for most time spent reading lessons on Reading Plus. (Between 01/06/26 - 12/06/26)

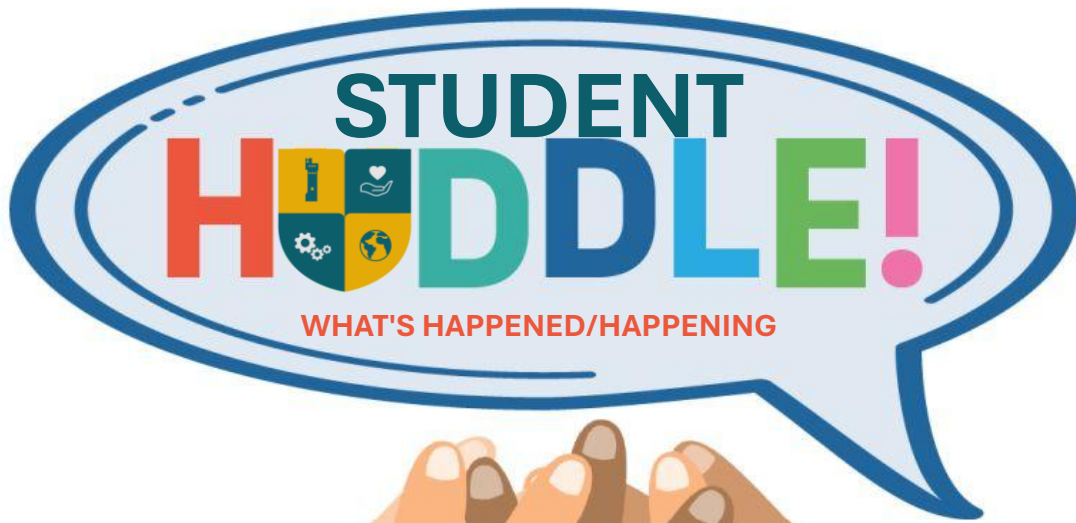
**Week commencing June 15th** - Certificates provided for top 2 students per class for most reading lessons completed on Reading Plus. (Between 15/06/26 - 26/06/26)

**Week commencing June 29th** - Certificates provided for top 2 students per class for total highest words read on Reading Plus. (Between 29/06/26 - 10/07/26)

**End of term-** Certificate provided for top 3 students per year group for highest reading level gained.

# WEEKLY UPDATE

## WEEK STARTING 15th June



- ✓ **Yr 10 Head Student & Prefect applications** - applications for the roles are now closed for Year 10 and staff will be voting for the Head Students this week. Once the Head Students are nominated, they will be visiting the KS3 seminars to launch the applications for Prefects 2026-27!
- ✓ **End of Year exams** begin this Thursday, 18th of June starting with Year 10
- ✓ **Careers Fair 2026** - taking place on Monday 6<sup>th</sup> of July between 12:30-4pm. More details to follow closer to the date and the Sports Hall will be open to families to join between 3-4pm.
- ✓ **Year 6 Transition Day** – Tuesday, 7th of July
- ✓ **Newsome's STEM Summer Fair** – Thursday, 9th of July
- ✓ **Sports Day** – Tuesday, 14th of July
- ✓ **Yr 10 Mock Results Evening** – Thursday, 16th of July

### UPCOMING EVENTS



# EXCEPTIONAL



**THE  
SPECIAL 6**  
STEPS TO EXCEPTIONAL

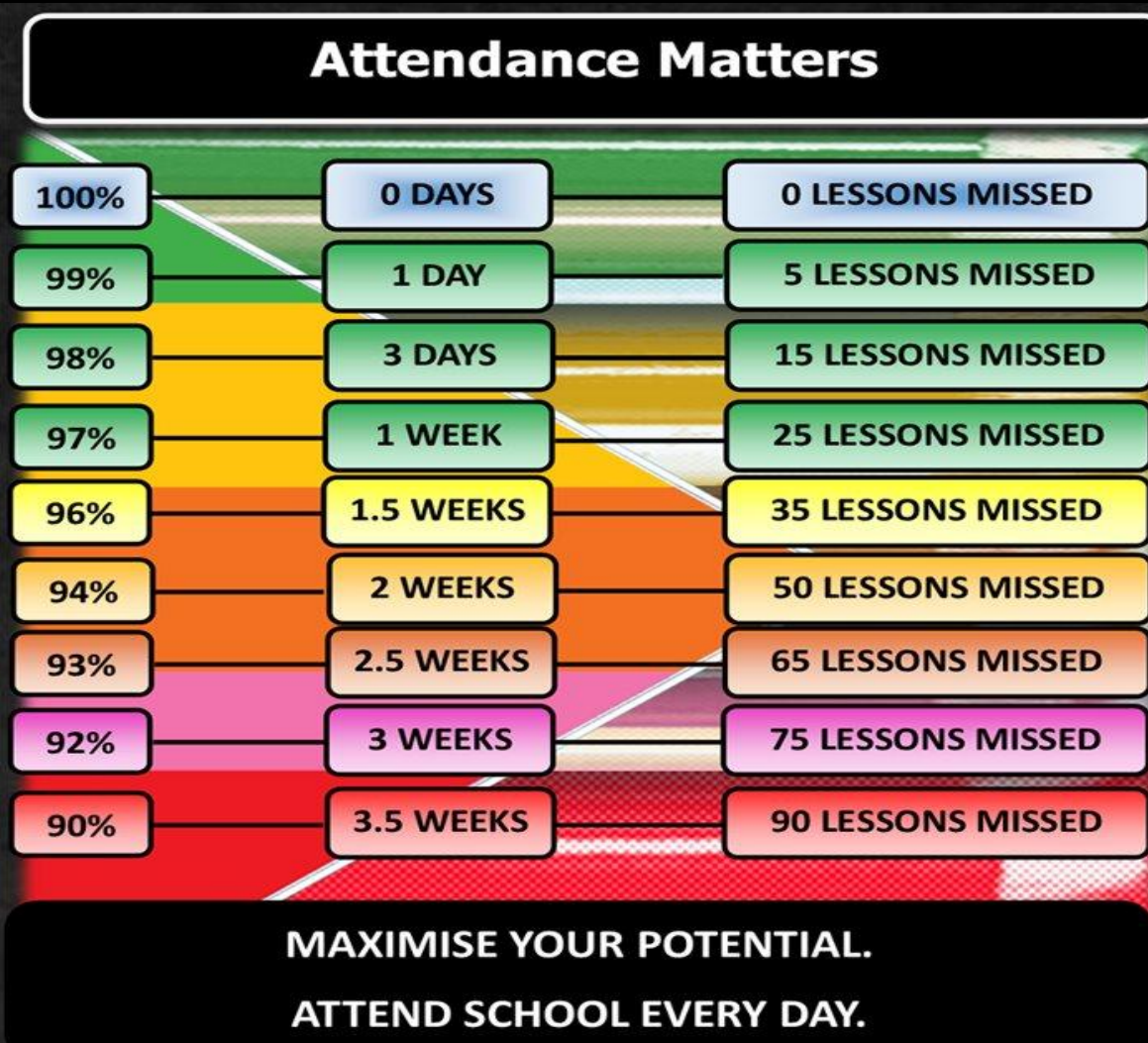
- ✓ **ATTENDANCE**
- ✓ **ATTITUDE TO LEARNING**
- ✓ **CONDUCT**
- ✓ **REWARDS**
- ✓ **EXTRA-CURRICULAR**
- ✓ **HEALTH**



Newsome Academy

# General Expectations

✓ Attendance matters



Remember the impact that a low attendance figure has on College applications and life chances!



# MINDSET

## MASTERY





**Fundamental British Values** underpin what it is to be a citizen in a modern and diverse Great Britain valuing our community and celebrating diversity of the UK. These 5 values are:  
**Democracy, Rule of Law, Mutual Respect, Tolerance, Individual Liberty.**



**Which FBV does the theme of 'Global Wind Day' link with?**



**Newsome Academy**



**Fundamental British Values** underpin what it is to be a citizen in a modern and diverse Great Britain valuing our community and celebrating diversity of the UK. These 5 values are: Democracy, Rule of Law, Individual Liberty, Mutual Respect and Tolerance.

#### 1. Democracy

- 'Rule by the people'
- Making decisions together (voting)
- The right to voice your opinion

#### 2. Rule of Law

- Understand and obey the rules set by the government to develop order



#### 3. Individual Liberty

- The right to believe, act and express oneself freely
- The right to freedom of speech
- The right to vote

#### 4. Mutual Respect

- To treat people politely and thoughtfully, to show we value them
- Seeing things from someone else's viewpoint

#### 5. Tolerance

- Respecting different faiths and cultures
- Understanding that we don't all share the same beliefs and values and not imposing ours on others





# Celebrating the Power of Wind

**Global Wind Day** is celebrated every year on 15<sup>th</sup> June.

It is an international day that helps people learn about:

- The energy from wind and renewable resources
- How wind turbines generate electricity
- The role energy from wind plays in tackling climate change
- Careers and opportunities in the growing green energy industry



# What is energy from wind?

The energy from wind is a **renewable energy source**, which means it will not run out.

The Sun heats different parts of the Earth unevenly, causing air to move. This moving air we call wind.

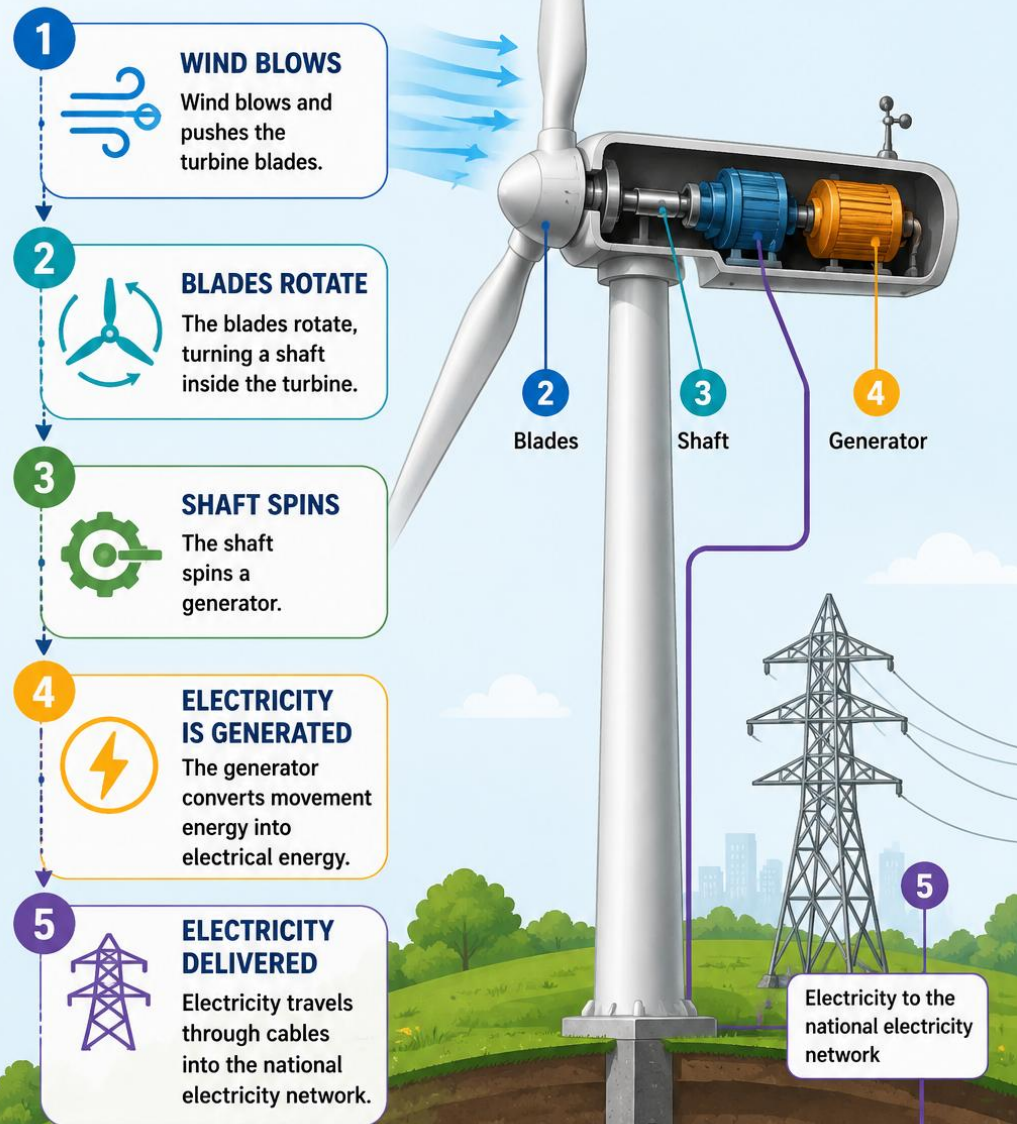
We can capture the energy in the moving air (**kinetic energy**) and convert it into electricity using wind turbines.





# HOW DO WIND TURBINES WORK?

Turning wind into clean electricity



Newsome Academy



# Why was Global Wind Day created?

The day was created by the Global Wind Energy Council and WindEurope to help people understand the benefits of energy from wind.

The world faces some big challenges:

- Climate change
- Air pollution
- Increasing demand for electricity
- Reducing our use of fossil fuels





# Why was Global Wind Day created?

Energy from wind provides a cleaner way to generate electricity because:

- It produces no greenhouse gases while generating power
- Wind is free and will never run out
- It helps countries become more energy independent









# How is this tackling climate change?

Climate change is largely caused by greenhouse gases released when fossil fuels are burned.

Wind turbines generate electricity without burning fuels. This means:

-  Less carbon dioxide (CO<sub>2</sub>) released into the atmosphere
-  Cleaner air and less pollution
-  More renewable electricity for communities
-  Reduced dependence on fossil fuels



# How does this affect you?

The choices we make today will affect the world you grow up in.

Capturing the energy from wind can help:

- Reduce climate change impacts
- Improve air quality
- Create new technologies
- Provide future jobs



# Could you work in the future of Wind?



The Global Wind Energy Council needs people with many different skills:

- Science skills – study weather, climate and environmental impacts
- Engineers – design and build turbines
- Computer Programmers – develop software to control turbines



# Could you work in the future of Wind?

The Global Wind Energy Council needs people with many different skills:

- Data analysis – monitor performance and efficiency
- Technicians – inspect and maintain wind farms
- Project managers – plan and lead large renewable energy projects





# What can you do now?

Small actions make big differences.

- ✓ Learning about renewable energy
- ✓ Saving electricity at home and school
- ✓ Turning off lights and devices when not needed
- ✓ Taking part in STEM clubs and projects
- ✓ Considering future careers that help protect the environment



# Final thought...

If you could design the wind turbine of the future, what would it look like?

Could it:

- Be quieter?
- Generate more electricity?
- Work in more places?
- Be made from new, reused materials?





**EXTRA-CURRICULAR TIMETABLE**

**SUMMER - TERM 2 2025-2026**



# Extra-Curricular Activities: Summer Term 2 25/26



DAY	CLUB	LOCATION	STAFF	P6 Week A	P6 Week B
MONDAY	<ul style="list-style-type: none"> <li>• Rounders</li> <li>• Cooking Club</li> <li>• Writing Club</li> <li>• DOFE Week A</li> <li>• Algebra Level 3 Club (invite only)</li> <li>• Chess</li> </ul>	<ul style="list-style-type: none"> <li>• Sports hall/fields</li> <li>• Cooking Room</li> <li>• Library</li> <li>• 402</li> <li>• 407</li> <li>• Library</li> </ul>	<ul style="list-style-type: none"> <li>• SMT/HRA</li> <li>• JBA</li> <li>• ASQ</li> <li>• GEA</li> <li>• MAS</li> <li>• NLA</li> </ul>	Option A	Option D
TUESDAY	<ul style="list-style-type: none"> <li>• Wheelchair sports club</li> <li>• Music Club (Invite Only)</li> <li>• KS3 Coding Club</li> <li>• Week B - student council- 30 mins</li> <li>• Week A- Pride - 30mins</li> </ul>	<ul style="list-style-type: none"> <li>• Sports Hall</li> <li>• 401</li> <li>• 608</li> <li>• 302</li> <li>• 302</li> </ul>	<ul style="list-style-type: none"> <li>• SCU</li> <li>• AMC</li> <li>• OMO</li> <li>• CBR</li> <li>• CBR</li> </ul>	Science	Science
WEDNESDAY	<ul style="list-style-type: none"> <li>• Cricket</li> <li>• BSL Club</li> <li>• STEM on Track (Invite only)</li> <li>• Music Club (Open to all)</li> <li>• Week B- debate club – 30mins</li> <li>• Week A&amp;B- Culture Club- 45 min</li> </ul>	<ul style="list-style-type: none"> <li>• Sports hall/outside</li> <li>• 805</li> <li>• Lecture Theatre</li> <li>• 401</li> <li>• 302</li> <li>• 302</li> </ul>	<ul style="list-style-type: none"> <li>• JDAA</li> <li>• DCR/ SHE</li> <li>• EGA</li> <li>• AMC</li> <li>• CBR</li> <li>• CBR</li> </ul>	Maths	Maths
THURSDAY	<ul style="list-style-type: none"> <li>• Athletics</li> <li>• Choir</li> <li>• Drama Club</li> <li>• Sparx Support Club</li> <li>• BSL Beginners</li> <li>• KS4 Computer Science Club (Invite only)</li> <li>• H&amp;S YR 10</li> </ul>	<ul style="list-style-type: none"> <li>• Sports hall/outside</li> <li>• 401</li> <li>• Lecture Theatre</li> <li>• 402</li> <li>• 805</li> <li>• 608</li> <li>• 606</li> </ul>	<ul style="list-style-type: none"> <li>• GEA</li> <li>• ECO/CBR</li> <li>• LAB/BRO</li> <li>• EBU</li> <li>• DCR/JSL</li> <li>• OMO</li> <li>• SMI</li> </ul>	English	English
FRIDAY				Option B	Option C



# The Designated Safeguarding Leads @TNA

Miss Hall is the Designated Safeguarding Lead



**Miss A Hall**  
DSL



**Ms H Baxter**  
Deputy DSL



**Ms R Leroy**  
Deputy DSL



**Ms E Carter**  
Deputy DSL



**Ms J Brook**  
Deputy DSL



**Ms G Coldwell**  
Deputy DSL

How can I keep Safe?

[talk@newsomeacademy.co.uk](mailto:talk@newsomeacademy.co.uk)